

The Puffin



FREE community magazine • published quarterly

Number 56 • May 2026



Serving...

- Beaumaris
- Glanrafon
- Llanddona
- Llandegfan
- Llanfaes
- Llangoed
- Llansadwrn
- Penmon

...and on-line

DEINTYDDFA
NA-NÓG
DENTAL & IMPLANT TEAM



*Ein Gywefan
Newydd Website now
Launched*

www.nanog.dental

**Canolfan Rhagoriaeth Ddeintyddol Gogledd Cymru
North Wales Centre of Dental Excellence**

- GENTLE PRIVATE DENTAL CARE
- GBT HYGIENE & GUM DISEASE MANAGEMENT
- ENDODONTICS - ROOT CANAL THERAPY
- ORAL & MAXILLOFACIAL SURGERY
- ORTHODONTICS - FIXED & CLEAR ALIGNERS inc. Invisalign®
- COSMETIC DENTISTRY inc. Bioclear® Treatments
- DENTAL IMPLANTS - REPLACING DAMAGED OR MISSING TEETH
- SEDATION FOR NERVOUS PATIENTS
- MONTHLY MEMBERSHIP PLAN



"Your Smile is Our Priority"



Contact Us: **01248 858383**
reception@nanog.dental



Our Location: **8 Llys Castan**
Parc Menai, Bangor LL57 4FH

Editorial: snow, wind... and 'community'

John Nunn

As I sit here writing these words I'm gazing across the Strait at a snowclad Eryri. It's mid-March, and only a few days ago I was outside with a short-sleeved T-shirt enjoying the warmth of the sun on my skin. We've been buffeted by more than our fair share of gales. Who, I ask, would want to live in a place where the weather was predictable? Answers *not* required: we've certainly had a lot of weather in the last few weeks.

On one of those slightly warmer occasions I wandered with a friend down through the Aberlleiniog woods to the sea. Sadly, we couldn't walk on the beach as the path from the road onto it was flooded. On the way back we detoured to have a look at Castell Aberlleiniog, where access is not possible at the moment as the steps up to the top are in a dangerous state. We must remember that much of the maintenance of the footpaths here is undertaken with the assistance of volunteers, and must be grateful for what we have.



Castell Aberlleiniog in March, looking suitably mysterious among the trees

How many places the size of Llangoed have their own castle? If you are not aware of this let me tell you that when access is restored views from the top are amazing. It is also a lot older than that new-fangled place down in Beaumaris (with apologies to all our Beaumaris readers).

Every year there's a Sculpture Trail planned for this route. I'm told the one which was here in March was the best yet. Hopefully some of you visited it; if you missed this year's Trail, put a note in your diary and visit it next year. You'll find more about the Sculpture Trail on page 20.

📄 Castell Aberlleiniog
https://en.wikipedia.org/wiki/Castell_Aberlleiniog

📄 Aberlleiniog Castle: Anglesey's Hidden Norman Fortress
<https://discovernorthwales.com/aberlleiniog-castle/>

This brings me neatly on to 'community'.

How lucky we are in our 'pretty, pointy piece of Ynys Môn/ Anglesey', living in the middle of such a busy and vibrant 'community'... the Sculpture Trail... the several groups which participate in the maintenance of footpaths, as mentioned above... the wide range of activities taking place at, and through, Canolfan Hamdden Beaumaris (think of the community minibus service for one)... the various community halls... **The Puffin** (yes: we'll do a little trumpet-blowing, because we are part of that 'community')... All these small bits of 'community' activity add up to a huge total of 'community' benefit.

An example is the recent gathering round a kitchen table in Llanddona to insert leaflets in **The Puffin** 55. That's what 'community' is about, from the gathering of news, articles, information, you name it, through stitching it all together, to gathering in a kitchen to insert leaflets in the completed article before distribution to **The Puffin's** outlets.

It's just a small example, but so many 'community' ideas were part of the conversation that took place, some of which will end up benefiting our 'community'... and some of us Editorial Team members have had very special reason to be grateful as well for the help and involvement of members of our local community over the last month or so.

'Community' works both ways: you support us to support you; it's a circular process.



Organised chaos; the reader will ignore the state of **The Puffin** assembly line (Julie Upmeyer)

As you read through what will undoubtedly be another top-quality product (he says modestly) you'll be aware, I think of a huge 'community' context in this edition of **The Puffin**.

We all take great pleasure in wishing all our readers an enjoyable and well-supported spring and summer!

Some housekeeping: The Puffin's symbols

Andrew Perrott

After all these years of typesetting **The Puffin** it's only just occurred to me that I've never explained what the little symbols that we use through the magazine mean.

I'm sure that all of our readers will have sussed them out, but for anybody who might remain in the dark:

☎ telephone number, landline or mobile

✉ e-mail address

📠 facsimile number (I don't think we've ever used this one)

📧 postal address

🌐 website, article or other on-line information

📄 downloadable publication, usually in .pdf or .doc format, or a book

What's happening where?

Note

We do our best to ensure that dates, times and so on are accurate. Information can change, though, so do check beforehand.

Editorial information and other 'useful to know' stuff

You'll find this on page 47.

Anglesey, Gwynedd

- **Coed Lleol/Small Woods:** Small Woods is the national organisation for small woodlands, and has a significant track record in managing Social Forestry projects: promoting sustainable management of small woodlands for social, environmental and economic benefit.

Coed Lleol/Small Woods in Wales was established in 2002

www.seiriolalliance.co.uk/newsletters/



North Wales Eye Specialist Centre

We preserve, enhance and protect your vision

- ◆ NWESC is dedicated to delivering high-quality, patient-focused eye care with a strong emphasis on advanced cataract surgery. Using modern techniques and state-of-the-art technology, our experienced clinical team provides safe, effective procedures designed to restore clear vision and improve quality of life. From initial consultation through to aftercare, patients receive personalised support in a professional and welcoming environment.
- ◆ We understand that timely treatment matters. That's why NWESC offers efficient appointments, minimal waiting times, and streamlined care pathways to ensure a smooth experience from start to finish.
- ◆ Committed to making exceptional eye care accessible, NWESC provides cataract surgery at competitive rates without compromising on quality or clinical excellence. Transparent pricing and tailored treatment options give patients confidence and peace of mind. Choose NWESC for trusted expertise, outstanding care, and affordable cataract surgery you can rely on.
- ◆ Our highly experienced team of consultants are dedicated in providing personalised eye care service.



Offering you rapid access to consultations and treatments, provided by our specialist Consultant Team



We offer a range of diagnostic tests, latest treatments, and surgical procedures for a full spectrum of eye conditions:

- ➔ Cataracts
- ➔ Glaucoma
- ➔ Age Related Macular Degeneration
- ➔ Diabetic Retinopathy
- ➔ Retinal Vein Occlusion
- ➔ YAG Laser treatment
- ➔ Minor lid conditions
- ➔ Major lid conditions
- ➔ Eyelid surgery
- ➔ Corneal conditions
- ➔ Dry eyes

For high quality eye care that is convenient for you
Call: 01745 346913 • E-mail: info@nwesc.co.uk

www.northwaleseyespecialist.co.uk

Located at:

Unit 5430, North Wales Business Park, Abergele LL22 8LJ • Caernarfon Road, Bangor LL57 4SG

and helps to improve the health and wellbeing of people across Wales through woodland- and nature-based activities.

All of our sessions are free and open to everybody, but booking is essential.

We also deliver training in woodland management and nature-based activities.

For updates on any forthcoming events or sessions, please e-mail Vivienne Plank to be added to our Anglesey newsletter.

✉ vivienneplank@smallwoods.org.uk

Follow us on Facebook:

📱 Coed Lleol Anglesey
www.facebook.com/CoedLleolAnglesey/

or visit our website:

📱 Coed Lleol/Small Woods
www.smallwoods.org.uk/en/coedlleol/



- **Carers Outreach Service:** do you look after someone?

Carers outreach Service provides information and support for relatives, friends or neighbours.

The organisation was founded in 1991, and:

- Is the first port of call for carers
- Is a voice for carers
- Ensures a fair deal for carers
- Puts carers first

in Anglesey, Gwynedd and Conwy.

For more information:

☎ 01248 370797

📱 www.carersoutreach.org.uk

✉ help@carersoutreach.org.uk

📧 Unit G1, Intec
Parc Menai
Bangor
LL57 4FG



- **Anglesey & Gwynedd Widowed Group:** please note that this is *not* a dating site; the organisers are volunteers and the group is not a charity.

It's a group for widows and widowers aged over 50 (suggested age only) who live permanently in the Anglesey, Bangor and Caernarfon (Gwynedd) areas.

We meet for regular get-togethers: coffee, lunch, days out, leisure activi-

ties, evenings out, theatre, concerts, coach trips and so on, and holidays, UK and abroad, and cruises as well.

This is not a support group, just a group of people who have been through the loss of a spouse or long-term partner, and who can empathise with each other but are ready to start enjoying life again.

"We have acquired five new members through **The Puffin!**"

We use www.meetup.com for information about events and to keep in touch. Search *Anglesey & Gwynedd widowed* and you'll find us.

We are a bilingual group, with membership at roughly 50/50, so we organise Welsh events as well as English.

If you'd like more information please contact me, Lyn Roberts.

☎ 07474 224246

✉ lyn2910@yahoo.co.uk

Bangor

- **Pontio:** Pontio is Bangor University's centre that offers an exciting and unique blend of arts and culture, innovation, education and community.

Pontio showcases the very best from the world of arts and culture, including drama, music, dance, and contemporary circus, local and international.

It serves as a focal point for students, and adds significantly to the amenities in Bangor and the surrounding areas for the economic, social and cultural benefit of the University and of the wider community.

📧 Pontio
Deiniol Road
Bangor
Gwynedd
LL57 2TQ

✉ info@pontio.co.uk

📱 www.pontio.co.uk

📧 Events
<https://tickets.pontio.co.uk/Online/default.asp>

📱 Pontio Bangor
www.facebook.com/PontioBangor/

☎ Box Office
01248 382828



Beaumaris

- **Beaumaris Film Night:** put the first Thursday of every month in your diary! Have a look below at what's coming in the next three months.

Refreshments are available from 7.00pm; the film starts at 7.30pm. Tickets are still just £5 each and are available in advance from reception, or telephone to book.

☎ 01248 811200

Volunteers are always welcome; please contact Stephen Marsden for more information.

☎ 07774 699685

Put these dates in your diary...

- **7 May:** *Blue Moon* (2025), starring Ethan Hawke, Margaret Qualley, Bobby Cannavale, Andrew Scott.



Comic biodrama: legendary lyricist Lorenz Hart (Ethan Hawke) opens up on himself and his former musical partner Richard Rodgers (Andrew Scott) as everyone celebrates the opening night of *Oklahoma!*, Rodgers's new musical. (1hr 40min; 15)

- **4 June:** *Juror #2* (2024), starring Nicholas Hoult, Toni Collette, J K Simmons, Keifer Sutherland.



American legal thriller directed by Clint Eastwood: a man serving on the jury of a high-profile murder trial realises that he may be responsible for the victim's death. (1hr 54min; 12A)

- **2 July:** *The Choral* (2025), starring Ralph Fiennes, Taylor Uttley, Oliver Briscoe, Amara Oker-oke.



WW1 drama by Alan Bennett, with Ralph Fiennes and a star UK cast. In fictional Ramsden, the choral society recruits a bunch of locals for a patriotic concert of Edward Elgar's *Dream of Gerontius*. (1hr 53min; 12A)

- **6 August:** *I Swear* (2025), starring Robert Aramayo, Maxine

www.seiriolalliance.co.uk/newsletters/

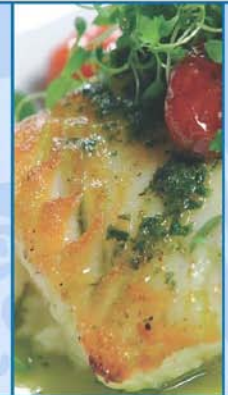
WELCOME TO

HARRY'S

COME AND SEE US at our unique setting at the historic Henllys Hall, just outside beautiful Beaumaris on the Island of Anglesey, where you will find a great choice of traditional and contemporary food and service with a warm Harry's welcome.

You'll find our restaurant a unique and unhurried place to enjoy our bistro style food, our award winning desserts and our specially selected wines.

If you are visiting Anglesey on a Sunday our lunches are very popular with visitors and Island residents.



HARRY'S BISTRO IN BEAUMARIS IS ALL ABOUT GREAT FOOD

**HARRY'S
BISTRO**

**WE'RE LOOKING
FORWARD TO
GREETING YOU**

Harry's Bistro, Henllys Hall, Beaumaris, Anglesey LL58 8HU

Tel: 01248 812976 | **Email:** enquiries@harrysbistro.com | **Web:** www.harrysbistro.com



MERCHED

**YMUWCH
Â NI YNG
NGHLWB
GOLFF
HENLLYS**



**JOIN US
AT
HENLLYS
GOLF
CLUB**



LADIES

**RHOWCH • GYNNIG • AR • GOLFF!
MEWN TRI CHAM HAWDD**

Cam 1: sesiwn blasu i ddechreuwr am ddim

- Pryd? 2 Mehefin, 5.30yp
- Dim angen offer; gwisgwch esgidiau hyfforddi a dillad chwaraeon cyfforddus
- Cwrdd ag aelodau benwaidd dros baned a chacen

Eisiau chwarae mwy? Ymlaen i Gam 2!

Cam 2: 6 gwrs grŵp 1 awr i ddechreuwr gyda'r Pro am £60

- Pryd? Bob dydd Mawrth, 9 Mehefin-14 Gorffennaf, 5.30yp
- O leiaf 4 mynychwr fesul gwrs
- Dim clybiau? Dim problem, darperir offer

Yn dal yn awyddus? Ymlaen at Gam 3!

Cam 3: aelodaeth rhagarweiniol i ferched

- Aelodaeth 3 mis o Orffennaf i Fedi 2026 am £100
- Cam 3 hefyd ar agor i (1) chwaraewyr profiadol yn dychwelyd i golff; (2) aelodau presennol clwb arall

Beth mae'n ei gynnwys?

- Bwciwch i chwarae pan mae'n addas i chi
- Ymunwch â'r merched
- Cael ffrind golff
- Offer ar gael i'w fenthyg

**GIVE • GOLF • A • GO!
IN THREE EASY STEPS**

Step 1: free beginner's taster session

- When? 2 June, 5.30pm
- No equipment is required; wear trainers and comfortable sports gear
- Meet current lady members over a cuppa and cake

Want to play some more? On to Step 2!

Step 2: 6 x 1 hour group sessions with the Pro for £60

- When? Every Tuesday, 9 June-14 July, 5.30pm
- A minimum of 4 attendees per lesson
- No clubs? No problem, equipment will be provided

Still keen? On to Step 3!

Step 3: introductory ladies membership

- 3-month membership from July to September for £100
- Step 3 also open to (1) experienced players returning to golf; (2) current members of another club

What does it include?

- Book to play when it suits you
- Join in with the ladies
- Have a golf buddy
- Equipment available to borrow

• **I fwcio eich sesiwn blas cysylltwch â •**

Barbara Kent

☎ 07713 244272

✉ bkent1502@gmail.com

• **To book your taster session contact •**

Peake, Somerled Campbell.



Compassionate and funny real-life drama about Tourette's sufferer John Davidson and his quest for a normal life amid opposition and confusion. Robert Aramayo won this year's BAFTA Fil Award for his leading role. (2hr 00min; 12A)

- **Clwb Rhwyfo Beaumaris Rowing Club:** rowing is a great way to exercise, make new friends and enjoy being out on the beautiful Menai Strait. Beaumaris Rowing Club is a friendly and welcoming club.

Whether you want to enjoy leisurely social rowing or test your fitness and endurance in the Welsh Sea Rowing races around the coast of Wales, we're happy to welcome new members of all abilities and interests.

No previous rowing experience is needed and we offer free taster sessions all year round, so please get in touch with us if you'd like to have a go!

We have a couple of notable events coming up this year:

- **Ras Ynys Seiriol/Puffin Island Race:** 9 May: an arduous but hugely rewarding 11 mile race around the iconic Ynys Seiriol/Puffin Island. The race starts and finishes on the RAYC line on Beaumaris Green; come along and cheer us on!
- **Welsh Sea Rowing North League Races:** 19 July: a day of competitive rowing races for Women's-, Senior-, Novice- and Mixed crews over a 3.5 mile course on the Menai Strait. Starting and finishing on the RAYC line, it's easy to follow the action from the Green and enjoy the excitement as clubs from around Wales compete in the Welsh Sea Rowing North League.

Visit our website if you'd like to know more about us.

📄 www.beaumarisrowingclub.org.uk/



- **Royal Anglesey Yacht Club:** The Royal Anglesey Yacht Club (RAYC) can trace its roots back to 1802,

when the Beaumaris Book Society was founded at Ye Olde Bull's Head Inn, Beaumaris.

In 1826 the Society moved to Green Edge, and in 1885, the year after Bangor University was established, the Club became the RAYC after Queen Victoria granted it a Royal Warrant.

The RAYC has two adopted classes of heritage yacht: the Fife One Design and the Menai Strait One Design.

📄 Royal Anglesey Yacht Club
6/7 Green Edge
Beaumaris
Anglesey
LL58 8BY

📄 Royal Anglesey Yacht Club
<https://royalangleseyyc.org.uk>

✉ secretary@royalanglesey.org.uk



- **Hwyllo Treftadaeth y Fenai:** mae Hwyllo Treftadaeth y Fenai (HTF) yn Elusen Gofrestredig, wedi'i lleoli yn Gallow's Point, Biwmares.

Un o briif flaenoriaethau HTF yw cadw'r hyn sydd yn ôl pob tebyg yn un o'r fflydoedd treftadaeth hynaf o gyfod hwyllo yn y byd, ar yr un pryd yn cynnig hwyllo at ddibenion iechyd a lles.

Dewch i hwyllo gyda ni, fel unigolyn neu fel elusen, sefydliad neu wasanaeth! Gallech elwa o hwyllo er mwyn iechyd a lles, efallai fel profiad uni-gryw.

Efallai y byddwch yn cael blas ar hwyllo ac eisiau cymryd rhan yn fwy a hwyllo'n rheolaidd!

Rydym wedi cynhyrchu ein rhaglen hwyllo ar gyfer 2026, felly os hoffech ragor o wybodaeth e-bostiwch Victoria Craig at vcraig.mshs@yahoo.co.uk.

- **Arddangosfa For-wrol Leol:** Canolfan Gymunedol David Hughes, Rating Row, Biwmares LL58 8AL, dydd Sadwrn 18-dydd Llun 20 Gorffennaf, 10.00yb-4.00yp.

Troi at dudalen 41 i ddarllen mwy amdano.



- **Menai Strait's Heritage Sailing:** Menai Strait's Heritage Sailing (MSHS) is a Registered Charity, based at Gallow's Point, Beaumaris. One of MSHS's main priorities is the

preservation of what is probably one of the oldest heritage fleets of sailing yachts in the world, at the same time offering sailing for health and wellbeing purposes.

Come and sail with us, as an individual or a charity organisation or service! You could benefit from sailing for health and wellbeing purposes, as a one-off experience, perhaps. You might just get the bug for sailing and want to get more involved and sail more regularly!

We've produced our sailing programme for 2026, so if you'd like more information please e-mail me, Victoria Craig, at vcraig.mshs@yahoo.co.uk.

- **Local Maritime Exhibition:** David Hughes Community Centre, Rating Row, Beaumaris LL58 8AL, Saturday 18-Monday 20 July, 10.00am-4.00pm.

Turn to page 41 to read more about it.

- **Beaumaris Cricket Club:** we welcome new members; our average age is somewhere around 50, a few younger and some older! If you'd like to join us give one of us a call:

Chairman: Ian Gorst Jones,

☎ 01248 811248

Captain: David Graves,

☎ 07851 632881

Vice-Captain: Evan Hughes,

☎ 07999 505001

Match organiser: Philip Lewis,

☎ 07484 262297

📄 www.facebook.com/people/Beaumaris-Cricket-Club/100057043976040/

- **Beaumaris Over 50s Club:** you're welcome to join us if you're 50+ and live in or near Beaumaris.

Club meetings take place at 2.00pm on the last Monday of the month.

Annual cost of membership is only £5; contributions are taken at each meeting towards tea/coffee and raffle prizes.

For more details, please contact the Chair, Mike Davies.

☎ 01248 812157, 07483 827069

✉ dmikedmail@gmail.com

📄 The Iorwerth Rowlands Centre
Steeple Lane
Beaumaris
LL58 8AE

STOP PRESS Please see the additional notes on page 46.

- **Beaumaris Singing For Pleasure Group:** do you want to:

- Improve your memory?
- Relieve stress and anxiety?

www.seiriolalliance.co.uk/newsletters/

- Boost your immune system?
- Improve your lung function?
- Uplift your mood?
- Make new friends?

...and, most importantly, have some fun?

If the answer's YES, join us at the lorwerth Rowlands Centre on Mondays, 11.00am-12.00 noon.

£2.50 per session, including tea, coffee, biscuits. New members will be very welcome!

For more information, please contact Mike Davies

☎ 01248 812157, 07483 82706

✉ dmikedmail@gmail.com

📍 The lorwerth Rowlands Centre
Steeple Lane
Beaumaris
LL58 8AE

- **RNLI: volunteers wanted!** The RNLI is working hard to make itself inclusive, with the Fundraising Team, shop helpers and crews all working together as a team. We'd welcome anyone who would like to volunteer in any capacity.

If you're interested do call in at the RNLI shop at the boathouse by the pier or telephone Valary Wakefield on 01248 811375.

Keep a lookout for notices in Beaumaris, and check Facebook regularly.

📍 Beaumaris RNLI Lifeboat
www.facebook.com/beaumaris.rnli.lifeboat/

📍 Find my nearest lifeboat station
<https://rnli.org/find-my-nearest/lifeboat-stations>

The Beaumaris Lifeboat Fundraising Group would like to thank everyone who attended and supported the Easter event on Saturday 5 April.

The sum of £1028.00 was raised, which is a wonderful contribution to our funds. In the the couple of days before the event, there were two call-outs, adding to the already busy start to the season. Thank you again, everybody, for your continuing support.



Lifeboats

puffinpages@gmail.com

- **Island Art Group Annual Exhibition:** The Island Art Group is a vibrant community of enthusiastic local artists from Anglesey and the surrounding area.

We are delighted to announce our Annual Art Exhibition, which will be held at the David Hughes Community Centre from Saturday 16 May to Saturday 30 May, daily, 10.00am-5.00pm. Well-behaved dogs will be very welcome.

The exhibition will showcase a diverse range of original work, including paintings, drawings, ceramics and sculpture, alongside artist folios and greeting cards. All artworks on

📍 <https://islandartgroup.weebly.com>

📍 David Hughes Community Centre
Rating Row
Beaumaris
LL58 8AL



- **Clwb Bowlio Beaumaris Bowling Club:** Clwb Bowlio Beaumaris Bowling Club fielded eight teams last year, in five different Leagues.

We would like to welcome new members, young or old, male or female.

The Club is at Happy Valley, by the beautiful Beaumaris Castle.

For more information and/or a taster session please contact Dave Mathias, Secretary.

✉ davemathias49@gmail.com

☎ 07712 121147

📍 Beaumaris Bowling Club

<https://beaumarisbowlingclub.yolasite.com/>

- **Seindorf Beaumaris Band events:** Seindorf Beaumaris Band has been at the forefront of local music-making for over a century.

Follow our activities by keeping an eye on social media and local noticeboards.

📍 Seindorf Beaumaris Band
Canofan Gerdd
New Street
Beaumaris
Anglesey
LL58 8EL

✉ post@beaumarisband.org.uk

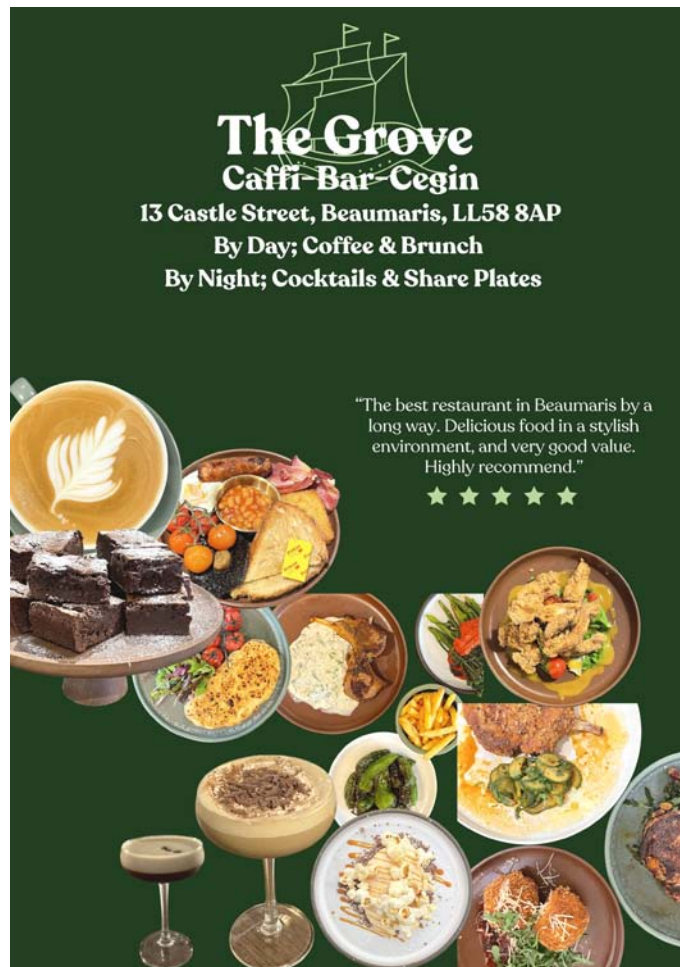
📍 Seindorf Beaumaris Band
www.beaumarisband.org.uk

📍 Seindorf Beaumaris Band
www.facebook.com/beaumarisband/



- **Bridge Club:** if you enjoy playing cards and think playing in a club would be fun, why not consider bridge? If you're an experienced card player bridge may not be as difficult as you think if you have some help to

(continued on page 13)



display will be available for purchase.

See our advertisement on page 12.

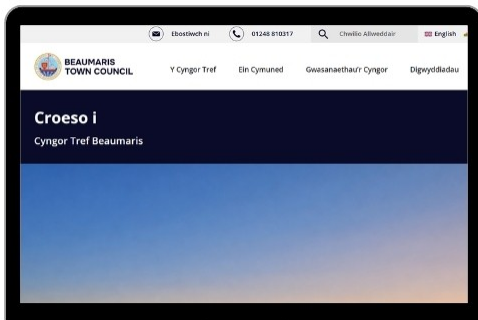
In addition to our annual Exhibition, the Island Art Group runs regular hands-on art activities throughout the year. These include weekly portrait painting sessions in Menai Bridge and monthly workshops in Beaumaris, led by visiting tutors who encourage us to explore new techniques and develop our skills. Our sessions are relaxed, friendly and supportive, and open to artists of all levels. New members are always welcome.

You'll find more information at our website.

CYNGOR TREF BEAUMARIS GWEITHIO DROS Y GYMUNED



DIWEDDARU CHI AR Y WYBODAETH O BE SY'N DIGWYDD YN Y GYMUNED



LANSIAD EIN GWEFAN NEWYDD!

Rydym yn falch iawn o gyhoeddi bod gwefan newydd y Cyngor Tref bellach yn fyw ers 26 Mawrth. Mae'r wefan wedi'i hailgynllunio i'w gwneud yn haws i ddod o hyd i wybodaeth allweddol, gan gynnwys rhaglenni a chofnodion cyfarfodydd, gwybodaeth ariannol, a manylion cyswllt eich Cyngorwyr a staff y Swyddfa. Mae gwella mynediad at wybodaeth wedi bod yn brif flaenoriaeth, ac rydym yn annog trigolion i gael golwg a dod i adnabod y wefan newydd.

CYFARFOD BLYNYDDOL



Cynhelir Cyfarfod Cyffredinol Blynyddol y Cyngor Tref ddydd Llun 5 Mai yn Neuadd y Dref.

Dyma'r cyfarfod lle etholir y Maer a'r Dirprwy Faer ar gyfer y flwyddyn i ddod, gan nodi dechrau blwyddyn ddinesig newydd. Mae hefyd yn gyfle i edrych yn ôl ar y flwyddyn a aeth heibio a gosod naws gadarnhaol ar gyfer y flwyddyn sydd i ddod.

EDRYCH YMLAEN

Wrth i ni symud i mewn i dymor yr haf, mae gwaith yn parhau i gefnogi digwyddiadau, twristiaeth a'r gymuned ehangach ym Miwmares. Rydym yn cydnabod bod rhywfaint o drafodaeth wedi bod ynghylch y Cyngor yn ystod y misoedd diwethaf ac yn diolch i'r rhai sy'n parhau i ymgysylltu mewn ffordd adeiladol a chadarnhaol. Gall trigolion gadw i fyny â'r newyddion a'r diweddariadau diweddaraf drwy wefan y Cyngor Tref a'r cyfryngau cymdeithasol.

CARCHAR A LLYS BEAUMARIS



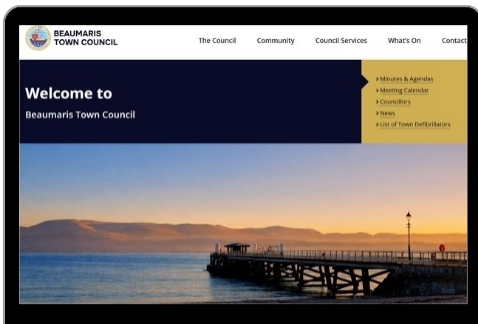
Mae Carchar a Llys Beaumaris bellach ar agor unwaith eto, ac mae wedi bod yn braf iawn croesawu ymwelwyr yn ôl.

Mae'r adeiladau hanesyddol hyn yn rhan bwysig o dreftadaeth y dref, gan gynnig cipolwg ar orffennol Beaumaris. Bu diddordeb cryf ers ailagor, gyda phobl leol ac ymwelwyr fel ei gilydd yn awyddus i ailddarganfod yr adeiladau pwysig hyn a'r straeon sydd ynghlwm wrthynt. Cafodd y Carchar ei gynnwys yn ddiweddar ar raglen ITV Coast and Country, gan helpu i hyrwyddo Beaumaris i gynulleidfa ehangach, ac mae gennym nifer o brosiectau cyffrous ar y gweill. Rydym yn falch iawn o'r ymateb hyd yma ac yn edrych ymlaen at adeiladu ar y momentwm hwn dros y misoedd nesaf.

BEAUMARIS TOWN COUNCIL WORKING FOR THE COMMUNITY



SUPPORTING OUR COMMUNITY AND KEEPING YOU UP TO DATE



OUR NEW WEBSITE IS LIVE!

We're pleased to announce that the new Town Council website is now live since March 26th. The site has been redesigned to make it easier to find key information, including meeting agendas and minutes, financial information, and to contact your Councillors and Office Staff. Improving access to information has been a key focus, and we'd encourage residents to take a look and explore the new layout.

ANNUAL GENERAL MEETING



The Town Council's Annual General Meeting will take place on Tuesday 5th May at the Town Hall. This is the meeting where the Mayor and Deputy Mayor for the coming year are elected, marking the start of a new civic year. It also provides an opportunity to reflect on the past year and set a positive tone for the year ahead.

LOOKING AHEAD

As we move into the summer season, work continues to support events, tourism and the wider community in Beaumaris. We recognise there has been a level of discussion around the Council in recent months and thank those who continue to engage in a constructive and positive manner.

Residents can keep up to date with the latest news and updates via the Town Council website and social media channels.

GAOL & COURTHOUSE



The Beaumaris Gaol and Courthouse are now open once again, and it's been great to welcome visitors back.

These historic buildings remain a key part of the town's heritage, offering a glimpse into Beaumaris' past. Interest has been strong since reopening, with both locals and visitors keen to rediscover these important historic buildings and the stories they hold. The Gaol was also recently featured on ITV Coast and Country, helping to showcase Beaumaris to a wider audience, and we have a number of exciting projects in the pipeline. We're really encouraged by the response so far and look forward to building on this momentum over the coming months.



CHARITY AFTERNOON TEA

Join Inner Wheel Bangor for an enjoyable afternoon of tea, cakes, and fundraising

WHEN: Saturday, May 9th 2026	TIME: 2pm - 4pm	WHERE: Canolfan Beaumaris
--	---------------------------	-------------------------------------

TICKETS: £10 each
Available from The Canolfan

PROCEEDS IN AID OF:





FEATURING:




CONTACT: For more details call 01248 811200

Inner Wheel Bangor



TE PRYNHAWN ELUSENNOL

Ymunwch ag Inner Wheel Bangor am brynhawn difyr o de, cacennau, a choddi arian

PRYD: Dydd Sadwrn, Mai 9fed 2026	AMSER: 2yp - 4yp	BLE: Canolfan Beaumaris
--	----------------------------	-----------------------------------

TOCYNNAU: £10 yr un
Ar gael o'r Ganolfan

ELW ER BUDD:





YN CYNNWYS:




CYSWLLT: Am fwy o fanylion ffoniwch 01248 811200

Inner Wheel Bangor

ART EXHIBITION

**David Hughes Community Centre
Rating Row
Beaumaris
LL58 8AL**

16-30 May 2026
Open 10.00am-5.00pm every day



Island
Art Group

<https://islandartgroup.weebly.com>

ARDDANGOSFA GELF

**Canolfan Gymunedol David Hughes
Rating Row
Biwmares
LL58 8AL**

16-30 Mai 2026
Agored 10.00yb-5.00yp bob dydd



Island
Art Group

<https://islandartgroup.weebly.com>

(from page 9)

get started. I'm an experienced player who would be happy to take on a few learners with a view to their playing in a local club quite quickly.

I'd also be happy to update and improve the knowledge of anyone who is a 'rusty' player keen to join others enjoying the game.

It's a small and friendly Club. We hold meetings each Monday morning.

For more information please phone me, Gayda Young, on 01248 564249.

- **Canolfan Hamdden Beaumaris Leisure Centre:** There's so much happening at the Canolfan!

Read more about our activities on pages 24-25; there's news about this year's RunFest on page 37 as well.

☒ Canolfan Hamdden Beaumaris Leisure Centre
Rating Row
Beaumaris
Anglesey
LL58 8AL

☎ 01248 811200

✉ enquiries@canolfanbeaumaris.org.uk

🌐 Canolfan Beaumaris
www.canolfanbeaumaris.org.uk/



- **Seiriol Good Turn Scheme:** if you live in the Seiriol Ward area (Beaumaris, Glanrafon, Llandegfan, Llandona, Llanfaes, Llangoed, Llan-sadwrn and Penmon) the Seiriol Good Turn Scheme may be able to help you.

The services offered by the Scheme are provided by volunteers, and offer help to any person living in the Seiriol Ward who, due to illness, incapacity or some other need, may benefit from the help that is available.

If you feel that the Scheme could help you please telephone us and we will arrange a home visit to discuss your needs.

☎ 01248 305014
Monday-Friday,
9.00am-5.00pm

Turn to page 37 for the latest news on the local Community Minibus Service, which has received more funding from Isle of Anglesey County Council.



puffinpages@gmail.com

- **Dancing at the Canolfan!** Want to learn to dance? You can dance but want to improve?

Come along to Caroline's friendly classes at Canolfan Hamdden Beaumaris on Fridays, 7.00pm-9.00pm; everybody welcome.

☎ 01248 811200

✉ enquiries@canolfanbeaumaris.org.uk

- **The 40th Gŵyl Beaumaris Festival 2026:** get ready to immerse yourself in celebrating seven days of culture and creativity at the 40th Gŵyl Beaumaris Festival 2026!

2026 is a notable year: the very first Gŵyl Beaumaris Festival was held in 1986, and the Festival is celebrating its 40th anniversary with a dazzling programme of concerts, jazz cabarets and art.

From Wednesday 20 May to Monday 25 May, Beaumaris will come alive with world-class jazz, the elegance of opera, engaging talks, mesmerising orchestral, band and choral performances, as well as art and cabaret.

Regardless of whether you're a music aficionado, a lover of thought-provoking discussions, or simply seeking inspiration, this Festival has it all for you.

Get your diary out and go to page 15, where there's more about what's on, and visit our website for full details. Don't miss out on this unforgettable experience!

Booking: you may book by telephone, in person or on-line:

☎ 01248 811200
Monday-Saturday,
11.00am-3.30pm

☒ Canolfan Hamdden Beaumaris Leisure Centre
Rating Row
Beaumaris
Anglesey
LL58 8AL

Monday-Saturday,
11.00am-3.30pm

🌐 Gŵyl Beaumaris Festival
www.beaumarisfestival.org



- **Charity Afternoon Tea:** Saturday 9 May, 2.00pm-4.00pm, Canolfan Hamdden Beaumaris.

Join Inner Wheel Bangor for an enjoyable afternoon of tea, cakes and fundraising in aid of various charities.

Tickets £10 each, available from the Canolfan.

☒ Canolfan Hamdden Beaumaris Leisure Centre
Rating Row
Beaumaris
Anglesey
LL58 8AL

Turn to page 12 for more information.



Gwalchmai

- **Eisteddfod Genedlaethol yr Urdd 2026/the Urdd National Eisteddfod 2026:** Saturday 23 May-Friday 29 May, Anglesey Showground, Gwalchmai.

The last time Eisteddfod yr Urdd visited Ynys Môn was in 2004.

In addition to the competing, there will be exciting exhibitions and activities, and performance stages with dancers, live bands and groups entertaining every day.

☒ Anglesey Showground
Holyhead Road
Gwalchmai
Anglesey
LL65 4RW

🌐 Cysylltu/Contact us
www.urdd.cymru/cy/contact_us/
www.urdd.cymru/en/contact_us/

☒ Eisteddfod yr Urdd Ynys Môn 2026: Cae Sioe Môn, 23-29 Mai 2026
www.urdd.cymru/cy/eisteddfod-mon-2026/
www.urdd.cymru/en/eisteddfod-mon-2026/

📄 Syllabus: Eisteddfod yr Urdd
www.urdd.cymru/files/4917/5794/1684/SYLL2026-003_1.pdf



Holyhead

- **Canolfan Ucheldre Centre:** Holyhead may be 'over there' on the other side of Anglesey, but Canolfan Ucheldre Centre has a lot to offer the residents of Anglesey and those further afield.

Ucheldre is a leading performing and visual arts centre housed in a former convent chapel that sits within its own grounds and gardens.

Find out about what's happening at Canolfan Ucheldre Centre via the links below.

☎ 01407 763361

✉ box@ucheldre.org

☒ Canolfan Ucheldre Centre
Millbank
Holyhead
Anglesey
LL65 1TE
Monday-Saturday
10.00am-5.00pm
Sunday
2.00pm-5.00pm

☒ Ucheldre
<https://ucheldre.org>

☒ Ucheldre Holyhead
www.facebook.com/ucheldre.holyhead/



Llanddona

- **Neuadd Bentref Llanddona Village Hall:** we are a small and dedicated group of Committee Members and volunteers. We would love to welcome more people on board!

The Hall is available for hire. Please contact us if you would like more information or to make a booking.

✉ secretary@neuaddbentrefllanddona.co.uk

☎ 07733 176004, 07768 018370

☒ Neuadd Bentref Llanddona Village Hall
Llanddona
Anglesey
LL58 8TS

☒ Neuadd Bentref Llanddona Village Hall
www.facebook.com/llanddonavillagehall/

☒ Cymuned Llanddona Community
www.facebook.com/groups/llanddona/

VH indicates that the event is at Neuadd Bentref Llanddona Village Hall.

Be sure to keep your eye on social media, notice boards and **The Puffin** for updates.



- **Caffi Ni:** every Friday, 11.45am-2.00pm (**VH**).
Come and enjoy a home-cooked two-course meal and a drink in a relaxed and friendly atmosphere for only £9 per person.
A special roast dinner and dessert are available on the first Friday of every month.
All food is freshly prepared on the premises by volunteers.
Booking is advisable; please tele-

phone Pat on 07768 018370.

- **Paned a Sgwrs:** every Tuesday, 2.00pm-3.00pm (**VH**).

Improve your Welsh-speaking skills with this small, friendly group over a complimentary paned/cuppa and biscuits.

Welsh speakers of all levels are welcome.

Sessions are informal so that people can drop in for a quick chat or stay for the full session if preferred.

For more information contact Gill Vaughan or Sheila Healey.

☎ Gill Vaughan 07925 184476
☎ Sheila Healey 01248 810619



- **Dru Yoga:** every Thursday, 9.30am-10.30am with Saroj (**VH**).

A gentle form of yoga involving a lot of stretching; can be done whilst sitting on a chair if needed.

Dru Yoga is suitable for beginners and advanced practitioners, and is very popular.

All are welcome: £5.00 per session.

- **Nifty 60s:** every Wednesday, 10.00am-11.00am (**VH**). Come and improve your core strength, flexibility, balance, mental and physical strength and mental wellbeing.

This successful class aims to reduce slips, trips and falls.

Begin your journey to a better version of yourself for only £2.00 per session. There's no need to book: just show up!

- **Clwb Ffermwyr Ifanc Llangoed/ Llangoed Young Farmers Club:** meets every Monday, 7.45pm (in Llanddona, not in Llangoed) (**VH**).

☒ Wales Federation of Young Farmers Clubs
<https://yfc.wales>



- **Llanddona Writing Group:** thinking of a family memoir, or short story, or just the chance to do a little writing alongside friends?

We meet every three weeks on a Friday at 11.00am (**VH**).

We enjoy hearing from and encouraging each other, and maybe having a try at something new.

Why not come along and see...

If you'd like to know more, please

contact Stephen Marsden.

☎ 07774 699685.



- **Llanddona Table Tennis Group:** we are a friendly social table tennis group who play every Monday, 10.00am-12.00 noon (**VH**). We welcome new players of any ability.

There are usually around 12 players of mixed abilities and roughly equal numbers of men and women. We have three tables and have bats and balls that everyone can use.

We play for most of the two hours, but do stop for tea/coffee halfway through.

Please contact Mark Simpson if you're interested or have any questions.

✉ markjsimpson@hotmail.com

☎ 07785 762580



- **Village Knit Club:** every Monday at yr Owain Glyndŵr, at 7.15pm... looking forward to seeing you all!

For more information contact Meg Marsden.

☎ 07913 223435

- **Concert:** Saturday 16 May: doors open at 6.00pm (**VH**).

Join us, and enjoy Meryl Elin and Cefn Glas All-Stars!

Meryl will be singing a varied selection of music in Welsh and English, including Country and Western.

Cefn Glas All-Stars will be playing an eclectic mix of original material fused with classic and contemporary covers: rock, soul, and a touch of blues, all reflecting the myriad styles from the open mic night that created them.

Keep an eye out for posters and social media announcements.

- **Fun Dog Show and Fair:** Saturday 13 June (**VH**): delicious light refreshments will be available.

Keep an eye out for posters and social media announcements.

Stallholders and crafters: contact us for more information, and to reserve a table.

☎ 07733 176004, 07768 018370

- **National Open Garden Scheme 2026:** Saturday 11 July, 11.00am-4.00pm, following hugely successful village openings in 2024 and 2025 the National Open Garden Scheme (NGS) will be returning to Llanddona

www.seiriolalliance.co.uk/newsletters/

A 40-year partnership

Gŵyl Beaumaris Festival's raison-d'être was twofold: to introduce our jewel of a town to a wider world by creating an international-standard arts festival, and to bring major artists to an area whose people otherwise might never experience these talents.

Here's the inspiring 40th Anniversary programme!

40 years!

The very first Gŵyl Beaumaris Festival was held in 1986; the Festival is celebrating its 40th anniversary this year with a dazzling programme of concerts, jazz cabarets and art.

Marking the special year, the music of two composers – our very own Gareth Glyn (75 this year) and the English composer, Michael Hurd (1928-2006) – will be heard throughout Festival week.

From 1986-2026

In *Festival Talk 1*, Director Anthony Hose is joined by Rhiannon Mathias, Wendy Hiscocks, Gwyn L Williams and Valerie Verbi to discuss some of the highlights of the first 40 years of the Gŵyl Beaumaris Festival.

Friday 22 May, 11.00am

One Big Festival Family

It's the link with Beaumaris town and community that makes the Festival so special: we're all one big family!

Come and hear Rachel Retallick and her children, Jonathan (artist), Hannah (author) and David (Senior Leader, Dylan's Restaurants) talk about their connection with the Festival in *Festival Talk 2*.

Monday 25 May, 11.00am

Jonathan is Festival Artist this year, and you can view his stunning artworks at the *Art Exhibition Opening* in Canolfan Beaumaris.

Thursday 21 May, 12.00 noon

Beaumaris Première

The Welsh Chamber Orchestra performs the world premiere of Gareth Glyn's *Tir-liniau Môn/Anglesey Landscapes*, as well as music by Hurd and Handel.

Young Welsh pianist, Tomos Boyles, also joins the orchestra to play the Mozart Piano Concerto that was performed by Dame Moura Lympany at the very first Beaumaris Festival!

Saturday 23 May, 7.30pm

Opera Film

Don't miss Gareth Glyn and Patrick Young (Director, OPRA Cymru) introducing a screening of Gareth's highly-acclaimed film opera, *Fires of the Moon/Tanau'r Lloer* in Canolfan Beaumaris.

Monday 25 May, 3.00pm

Festival Song Recital

Want to know more about composer Michael Hurd? Then come and hear baritone Jeremy Huw Williams and pianist Wendy Hiscocks perform his beautiful songs as well as Haydn's rarely-performed Welsh songs.

Saturday 23 May, 11.00am

Choral Concert

Cantorian Menai are back at the Festival with their new conductor, Joe Cooper, and performances of Carl Orff's epic *Carmina Burana*, as well as masterly music by Mathias and Glyn.

Thursday 21 May, 7.30pm

Masterworks Concert

Making their Festival debut, the Cecilia Ensemble – 4 of the finest international chamber musicians – perform music by Rebecca Clarke, Beethoven and Brahms.

Sunday 24 May, 7.30pm



Next Generation 2026

Two of our local young musicians are featured in our ever-popular *Young Artists Recitals* this year:

- 16-year-old cellist Oliver Pearce has performed at the Proms and is joined by Sophia Rahman (piano) for his recital

Thursday 21 May, 10.30am

- 14-year-old trumpeter Thea Ormrod, a member of the National Youth Orchestra, is accompanied by her father, Richard Ormrod, in her recital debut.

Friday 22 May, 11.00am

Young musicians from our community are also at the heart of Festival concerts by:

- The multi award-winning Seindorf Beaumaris Band...

Friday 22 May, 7.30pm

- Canolfan Gerdd William Mathias Students Showcase

Sunday 24 May, 3.00pm

Sizzling Summer Jazz

The Festival opens in sizzlingly hot style with:

- Billy Thompson Gypsy Style Band in the Bulkeley Hotel Ballroom

Wednesday 20 May, 7.30pm

and closes with:

- A Festival Finale Cabaret by the Ben Holder Hot Club Trio
- Monday 25 May, 7.30pm

Festival line-up

All concerts and events will take place in Canolfan Beaumaris unless otherwise stated.

Wednesday 20 May

- 7.30pm: Billy Thompson Gypsy Style Band
Bulkeley Hotel Ballroom

Thursday 21 May

- 10.30am: Young Artists Recital 1
Oliver Pearce (cello), Sophia Rahman (piano)
- 12.00 noon: Art Exhibition Opening
- 7.30pm: Choral Concert

Friday 22 May

- 11.00am: Festival Talk 1
- 3.00pm: Young Artists Recital 2:
Thea Ormrod (trumpet), Richard Ormrod (piano)
- 7.30pm: Seindorf Beaumaris Band

Saturday 23 May

- 11.00am: Song Recital
- 7.30pm: Welsh Chamber Orchestra, with a pre-concert talk at 6.15pm

Sunday 24 May

- 3.00pm: Canolfan Gerdd William Mathias Students Showcase
- 5.30pm: Festival Evensong
Church of St Mary & St Nicholas
- 7.30pm: The Cecilia Ensemble

Monday 25 May

- 11.00am: Festival Talk 2
- 3.00pm: Opera Film
- 7.30pm: The Ben Holder Hot Club Trio

Booking

By telephone on:

☎ 01248 811200
Monday-Saturday, 11.00am-3.30pm

In person at:

☒ Canolfan Hamdden Beaumaris
Leisure Centre
Rating Row
Beaumaris
Anglesey
LL58 8AL

Monday-Saturday, 11.00am-3.30pm

On-line at:

☒ www.beaumarisfestival.org

Rali Tractor Llanddona 2026

Dydd Sadwrn 15 Awst 2026
Yr Owain Glyndŵr, Llanddona, Ynys Môn LL58 8UF



Dewch i ymuno â ni, mwynhewch ddiwrnod
hyfryd a chefnogwch achosion da!

• • • • •

- 10.00yb: mae'r tractorau'n ymgynnull yn yr Owain Glyndŵr
 - 11.00yb: chwifio'r tractorau i ffwrdd; dilynwch nhw o'r Owain Glyndŵr drwy Landdona i Landegfan, Llan-sadwrn, Porthaethwy, Biwmares, Llangoed, Penmon ac yna'n ôl i Landdona
 - 3.30yp: mae'r tractorau'n dychwelyd
- • • • •
- Yn agor am 10.00yb
 - Diodydd, tamaid ysgafn, cacennau, stondinau, raffl
 - Cerddoriaeth yn ystod y dydd
 - Cerddoriaeth fyw o 4.00yp hyd ymhell i'r nos
 - Rhost mochyn
 - Yn cefnogi amrywiaeth o elusennau lleol

• • • • •
Mae rhywbeth i bawb!

Llanddona Tractor Rally 2026

Saturday 15 August 2026
Yr Owain Glyndŵr, Llanddona, Anglesey LL58 8UF



Come and join us, have a wonderful day
and support good causes!

• • • • •

- 10.00am: the tractors gather at yr Owain Glyndŵr
 - 11.00am: wave the tractors off; follow them from yr Owain Glyndŵr through Llanddona to Llandegfan, Llansadwrn, Menai Bridge, Beaumaris, Llangoed, Penmon and then back to Llanddona
 - 3.30pm: the tractors return
- • • • •
- Opens at 10.00am
 - Drinks, light bites, cakes, stalls, raffle
 - Music during the day
 - Live music from 4.00pm well into the evening
 - Hog roast
 - Supporting a variety of local charities

• • • • •
There's something
for everyone!

for the third year, with nine gardens participating. Put the date in your diary!

Go to pages 27-30, where you'll find more detailed information, including a list of the NGS openings in Anglesey and Gwynedd.

There's a list and map of the Llanddona village openings in this magazine, and you'll find the list and map on-line as well, at:

📧 www.seiriolalliance.co.uk/newsletters/

as the final two pages of **The Puffin** 56.

Food and soft drinks will be available at various venues.



- **Rali Tractor Llanddona Tractor Rally 2026:** put Saturday 15 August in your diary: that's the date of this year's Rali/Rally, now in its sixth year!

Please come and support us, and enjoy the spectacle of tractors of all sizes, and entertainment as well, at yr Owain Glyndŵr, Llanddona.

Go to page 36, where you'll find more detailed information about this exciting event.

There will be updates in **The Puffin** 57, August 2026, and a reminder.

Don't miss it!



- **Yr Owain Glyndŵr:** Community Pub Hero Award Winner 2024!

Contact us for information about what's on.

☎ 01248 810710

📍 The Owain Glyndŵr
Llanddona
Anglesey
LL58 8UF

✉ contact@ogdllanddona.co.uk

📍 Cymuned Llanddona
Community
www.facebook.com/groups/llanddona/

Llanfairpwll

- **Marquess of Anglesey's Column:** climb the column's 115 steps and take in the spectacular views over Anglesey, the Menai Strait and Snowdonia.

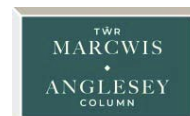
✉ post@angleseycolumn.org

☎ 07748 807402

📍 Tŵr Marcwis/Anglesey Column
www.angleseycolumn.com

📍 Marquess of Anglesey's Column
Parc Tŵr
Llanfairpwll
Anglesey
LL61 5NJ

📍 Marquess of Anglesey's Column
https://en.wikipedia.org/wiki/Marquess_of_Anglesey%27s_Column



Llangefni

- **Oriel Môn:** Llangefni is another place that's not on our immediate doorstep. Like Holyhead's Canolfan Ucheldre Centre, though, it has a lot to offer the residents of Anglesey and those further afield.

Oriel Môn is a museum and art gallery, and Oriel Kyffin offers exhibitions of national and international significance.

Find out about what's happening via the links below.

www.seiriolalliance.co.uk/newsletters/

📧 Oriel Môn
Rhosmeirch
Llangefní
Anglesey
LL77 7TQ

Opening times:

Tuesday-Sunday
10.00am-5.00pm

☎ 01248 724444

✉ orielynysmon@anglesey.gov.uk

🌐 Oriel Môn
www.orielmon.org/

🌐 Oriel Môn
www.facebook.com/orielmon/



Llangoed

- **Neuadd Bentref Llangoed Village Hall:** built in 1910, Neuadd Bentref Llangoed Village Hall has been a central gathering point for the community for over 115 years.

Run entirely by volunteers, the Hall hosts a wide range of events, including concerts, wellbeing classes, workshops, children's playgroups, and now, a vibrant cinema programme.

It is available for parties, functions and weddings.

Please contact us for more information or to make a booking.

✉ info@llangoedvillagehall.com

Visit our website and Facebook page for more details.

🌐 www.llangoedvillagehall.com

🌐 www.facebook.com/llangoed.villagehall

🌐 www.instagram.com/llangoed.villagehall

Sign up for our monthly newsletter!

🌐 www.llangoedvillagehall.com/subscribe

VH indicates that the event is at Neuadd Bentref Llangoed Village Hall.

Be sure to keep your eye on social media, notice boards and The Puffin for updates.



Regular events (VH):

- **Yoga:** Mondays, 6.30pm-7.45pm.
✉ emilykyleyoga@gmail.com

puffinpages@gmail.com

- **Pilates:** Tuesdays, 9.30am-10.30am.
✉ andrecross@hotmail.co.uk
- **Clog dancing:** Tuesdays, 7.30pm-8.00pm.
✉ info@llangoedvillagehall.com
- **Latin Line Dance:** Tuesdays, 7.00pm-9.00pm.
✉ info@llangoedvillagehall.com

- **Sinema Llangoed:** third Thursday of every month: doors open at 7.00pm, film starts at 7.30pm.

Join our monthly film club at Sinema Llangoed! We present a carefully selected variety of Welsh-language films, historical classics and contemporary documentaries.

Visit our website to see the film programme and to purchase tickets.

🌐 Events at the Hall
www.llangoedvillagehall.com/events

- **National Theatre Live at Sinema Llangoed:** we now show the full programme of National Theatre Live Screenings.

Visit our website to see the film programme and to purchase tickets.

🌐 Events at the Hall
www.llangoedvillagehall.com/events

- **Citizens Advice + Gwreiddiau Môn Roots:** third Friday of every month, 9.30am-11.30am.

The Gwreiddiau Môn Roots project provides a range of services with its partners that aim to prevent homelessness and address the stigma and prejudice that homeless people face.



- **Library Bus:** third Friday of every month, 10.30am-11.30am.



Other events (VH):

- **Plant Sale:** Sunday 17 May, 10.00am-1.00pm.
- **H is for Hawk:** Thursday 21 May: tickets £5; doors 7.00pm, film 7.30pm.

🌐 Events at the Hall
www.llangoedvillagehall.com/events

- **Lego Café:** Friday 29 May, 10.00am-12.00 noon:

Come one and all for a day to play. Free entry, refreshments available.

- **The Playboy of the Western World,** National Theatre Live at Sinema Llangoed: Sunday 31 May, 6.30pm.

Nicola Coughlan (Bridgerton) joins Éanna Hardwicke (The Sixth Commandment) and Siobhán McSweeney (Derry Girls) in John Millington Synge's riveting play of youth and self-discovery.

Doors 6.30pm, screening 7.00pm
Tickets (adult) £10. 12+ age rating.

🌐 Events at the Hall
www.llangoedvillagehall.com/events

- **MadFabulous:** Friday 12 June: doors 7.00pm, film 7.30pm.

Join us in 1890s North Wales for *MadFabulous*, following flamboyant aristocrat Henry Paget as he turns high society upside down in a riotous, true-story celebration of rebellion, identity, and unapologetic self-expression.

- **Llangoed Flower Show:** Saturday 4 July, 2.00pm-5.00pm

🌐 Llangoed Flower Show
www.llangoedflowershow.com

- There's more! Visit:

🌐 Events at the Hall
www.llangoedvillagehall.com/events

and keep up-to-date with what's on!

- **Camau Bach:** Llangoed Village Hall, every Friday during term-time, 9.30am-11.00am: for babies, pre-school children and their carers.

☎ Rev Lesley Rendle 07817 873080

- **Llangoed WI:** we meet on the first Wednesday of the month in Neuadd Bentref Llangoed Village Hall; meetings begin at 2.00pm.

We're a lively group of mixed ages, so, ladies, do feel welcome to join us.

Please contact our President, Christina Linford, for more information.

☎ 01248 490184

See also page 43.



- **Llangoed Knitting Club:** we meet at the Pont y Brenin Hub on the third

Monday of the month, 2.00pm-4.00pm. If you'd like to join us, contact:

Elizabeth Roberts
Bodwyn
Llangoed
LL58 8NP

- **Seiriol Men's Shed:** we're a busy and active group, and meet on Tuesdays and Thursdays, 10.00am-1.00pm, in our workshop adjacent to Haulfre Residential Home, Llangoed.

From the direction of Beaumaris:

- Go through Llangoed, past Morrisons Daily on the right, and down the hill

- Go over the little bridge over the stream at the bottom and up the hill for about 200 yards
- Turn right at the *Gerddi Haulfre Gardens* sign into the Haulfre Residential Home car park and walk down the slope (to the right if you're facing Haulfre) towards the gardens
- Our premises are very close; our workshop is on the left, and our other premises are on the right.

Please park thoughtfully; the car park is used by others as well.

For more information, or if you'd like to join us, please contact:

☎ Steve Jones 07368 219048

✉ mensshedseiriol@gmail.com

📍 Seiriol Men's Shed
The Flat
Gerddi Haulfre
Llangoed
LL58 8RY

📍 Seiriol Men's Shed
www.facebook.com/profile.php?id=61564967474652

See also page 41.



Beaumaris: the Church of St Mary & St Nicholas, the Mystery of the Missing Moulds and Joan, Lady of Wales

Michael Burkham & Robert Macaulay

Solve the Mystery of the Missing Moulds and win £100!

The Puffin 56 is offering you, its knowledgeable readers, the chance to win £100 by solving the mystery of some missing bits of Beaumaris's history.

If you go into our lovely Church of St Mary and St Nicholas you'll enter part of the marvellous history of Beaumaris. The Church is named after St Mary, because Beaumaris was a garrison and all garrison churches are dedicated to her, and to St Nicholas as the patron of seafarers since, from the time of the first Queen Elizabeth, Beaumaris has been the port of registration for boats in much of North Wales. Keep your eyes open and you'll see that fishing vessels in our lovely part of the world have the Beaumaris two-letter code (BS and a number) somewhere on the hull.

📄 Fishing boat codes/ports of registry in the UK (alphabetical) <https://thelobster.shop/wp-content/uploads/2022/09/FishingBoatRegCodes.pdf>

On either side of the chancel, the raised floor before the altar, there are beautifully carved misericords. A misericord is a cunning device: when you have to raise the seat because that part of the service requires you to stand, there is a ledge on the underside of the seat on which you can rest your bottom and take the weight off your legs.

These misericords are said to have come from the Friary at Llanfaes which Henry VIII closed. The Friary had been established to pray for the soul of Joan (Siwan), the daughter of King John of England, who had married King Llywelyn (Llywelyn ap Iorwerth) of North Wales and lived at Abergwyngregyn, on the mainland opposite Beaumaris. It is possible that the stone sarcophagus in the Church porch is hers also. If they did come from a Welsh royally-established Friary this would explain why they are so beautifully carved.

The photographs show a selection of these beautiful and ancient carvings.

📄 Misericord <https://en.wikipedia.org/wiki/Misericord>

Where Rating Row joins Castle Street, there is a small building that is now a part of the Bull's Head Inn. It used to be a small shop run, run latterly by one Adrian Farnham. He had the good idea of making moulds of these carvings and, it is said, with the help of John Wynn Jones, who had a hardware shop at the corner of Church Street and the upper end of Rating Row, he produced attractive replicas of the carvings.

Alas, Adrian and John are dead and nobody seems to know

where the moulds are. If you are lucky enough to know, please return them to Rev Huw Butler and £100 is yours. Here are his contact details:

☎ 07864 765382

✉ huwbutler@churchinwales.org.uk



Here are three of the beautifully carved misericords in the Church of St Mary and St Nicholas (Robert Macaulay)

The marriage of Llywelyn ap Iorwerth and Joan

Joan (Siwan), Lady of Wales and Lady of Snowdon (c.1191-2 February 1237) was an illegitimate daughter of King John of

England, and the wife of Llywelyn ap Iorwerth, Prince of Wales (initially King of Gwynedd), effective ruler of all of Wales.

Little is known about her early life. Her mother's name is known only from Joan's obituary in the *Tewkesbury Annals*, where she is called "Regina Clementina" (Queen Clemence); there is no evidence that her mother was in fact of royal blood. Joan may have been born in France, and probably spent part of her childhood there, as King John had her brought to England from Normandy in December 1203, in preparation for a marriage alliance to Llywelyn ap Iorwerth, Prince of Gwynedd.

Joan was betrothed to Llywelyn the Great in 1204, and the marriage is thought to have taken place in 1205. She and Llywelyn had at least four children together.

Joan often mediated between her husband and her father. According to *Brut y Tywysogion (The Chronicle of the Princes)*, when John was successfully campaigning in North Wales, 'Llywelyn, being unable to suffer the king's rage, sent his wife, the king's daughter, to him, by the counsel of his leading men, to seek to make peace with the king on whatever terms he could.'

In April 1226 Joan obtained a papal decree from Pope Honorius III, declaring her legitimate on the basis that her parents had not been married to others at the time of her birth, but without giving her a claim to the English throne.

At Easter 1230, William de Braose, who was Llywelyn's prisoner at the time, was discovered with Joan in Llywelyn's bedchamber. William de Braose was hanged on 2 May 1230, according to local folklore at Abergwyngregyn; the place was known as Gwern y Grog. A letter from Nicholas, Abbot of Vaudy, suggests that the execution took place at Crogen, near Bala (*crogi* means to hang).

Joan was placed under house arrest for twelve months after the incident. According to the Chronicle of Chester she was then forgiven by Llywelyn and restored to favour. She may have given birth to a daughter early in 1231.

Joan died at the royal home at Abergwyngregyn, on the coast opposite Beaumaris, in 1237. Llywelyn's great grief at her death is recorded; he founded a Franciscan friary in her honour on the seashore at Llanfaes, opposite the royal residence. This was consecrated in 1240, shortly before Llywelyn died. It was destroyed in 1537 by Henry VIII of England during the dissolution of the monasteries. A stone sarcophagus originally identified as that of Joan can be seen in the Church of St Mary and St Nicholas in Beaumaris.



The stone sarcophagus in the Church of St Mary and St Nicholas originally identified as that of Joan (Robert Macaulay)

Above the empty sarcophagus is a slate panel inscribed:

This plain sarcophagus, (once dignified as having contained the remains of Joan, daughter of King John, and consort of Llewelyn ap Iorwerth, Prince of North Wales, who died in the year 1237), having been conveyed from the Friary of Llanfaes, and alas, used for many years as a horsewatering trough, was rescued from

such an indignity and placed here for preservation as well as to excite serious meditation on the transitory nature of all sublunary distinctions. By Thomas James Warren Bulkeley, Viscount Bulkeley, Oct 1808.



The inscribed slate panel above the empty sarcophagus (Robert Macaulay)

In recent years doubt has been cast on the identity of the woman shown on the coffin lid, which is not thought to belong to the coffin on which it rests.

Experts have suggested the costume and style of carving belong to a much later decade than the 1230s when Joan died, although the coronet would indicate a member of the royal family. Eleanor de Montfort is thought to be the likeliest alternative.

- 📖 Joan, Lady of Wales https://en.wikipedia.org/wiki/Joan,_Lady_of_Wales
- 📖 Joan, Lady of Wales <https://historytheinterestingbits.com/2020/05/02/joan-lady-of-wales/>
- 📖 St Mary's and St Nicholas's Church, Beaumaris https://en.wikipedia.org/wiki/St_Mary%27s_and_St_Nicholas%27s_Church,_Beaumaris
- 📖 Church of SS Mary and Nicholas <https://britishlistedbuildings.co.uk/300005620-church-of-ss-mary-and-nicholas-beaumaris>

Make some gale-proof seating for your garden

Andrew Perrott

Are you as fed up as I am with having to put away garden seating because the wind blows it all over the place?

My garden in Llanddona looks out over Anglesey, with a glimpse of Holyhead Mountain through the Pentraeth forestry by Wern y Wylan, so you may imagine the wind that blows in most of the year.



The finished seats

Early last year I built a stand for a water-collection bin out of decking timber, and it looked just the size for a seat/small table, so I set to work. Effectively it's a 40cm cube, just the right height for a seat... have a look at the photographs. I made two, and they've withstood every gale since I started to think about this article last July.

Here's what you need for a 40cm cube. I was thinking of adapting it to make a bench 80cm long as well; so far I've done no more than think about it. The 40cm cubes are heavy, so an 80cm bench might well be like a bodybuilding course. Perhaps I should have placed this article with the *Wellness* section further on...

The ultimate accolade was when a visitor to last year's NGS Llanddona Open Gardens asked me: 'Where did you buy those sturdy seats?'



(L) This bin-stand started it off... I use the bin for the cold water that runs before the hot appears; it's astonishing how much water one wastes by letting it run down the drain
(R) The hidden bits of the structure



Use plenty of preservative and the decking will last for years; one of Lucy's favourite perches, a seat/table like this is another use of decking, and this one must be nearly 25 years old

Important

- **Dimensions:** bear in mind that my dimensions are approximate; you can scale it up or down to suit your needs, and you may have access to larger decking.
- **Preservative:** use the preservative outside so that there's plenty of ventilation: follow the instructions on the container... the fumes are toxic.

What will you need? (note the subtle mix of imperial/metric)

- **Decking timber:** I used 118mm x 32mm decking timber:
9 pieces 400mm long
6 pieces 335mm long
- **Square-section timber:** I used 2" x 2" pieces; any wood will do as long as it's reasonably blemish-free because it'll be seen only between the gaps:
4 pieces 355mm long
- **Wood treatment:** the decking might be treated, but a couple of coats of preservative will make it last for years; stand each cut end in the preservative for a few minutes to soak.



I used Ronseal Total Wood Preserver (clear) because I happened to have some to hand, but there are any number of brands from which to choose.

- **Screws:** use brass (size 10 x 2"), not 'bright'/galvanised steel; brass are softer, but won't rust and spoil the wood.
- **Tools:** the usual selection, an old plastic tray and an old paintbrush.
- **A dictionary:** for the bad language you're bound to use...

Dimensions

Each seat:

Width: all 4 sides: 400mm
Height: 435mm
Gaps: 20mm wide: just enough to allow you to insert your fingers to lift it, or you could fit brass handles

For each stool you'll need:

9 pieces of decking 400mm long
6 pieces of decking 335mm long
4 pieces of 2" x 2" 355mm long
(optional: 2 small pieces of 2" x 2" and bracing for the top)
60 brass screws, size 10 x 2"

If you have any questions, e-mail me or text/phone me:

✉ puffinpages@gmail.com

☎ 07757 980424



O'r castell i'r arfordir: celf yn dod yn fyw ar Lwybr Cerfluniau Aberlleiniog 🇬🇧

Julie Upmeyer

Cafodd llwybrau coetir, ffynhonnau cudd a'r arfordir dramatig o amgylch Castell Aberlleiniog eu trawsnewid yn oriel fyw fis diwethaf wrth i Lwybr Cerfluniau blynyddol Aberlleiniog groesawu ymwelwyr o bob cwr o Ynys Môn a thu hwnt. Wedi'i gynnal ar 28-29 Mawrth, daeth y digwyddiad am ddim â mwy na 50 o artistiaid, perfformwyr, naturiaethwyr a gwneuthurwyr ynghyd i gyflwyno gosodiadau, perfformiadau, celfyddyd tir a theithiau cerdded tywys ar draws y coetiroedd cymunedol, Traeth Lleiniog a Neuadd Bentref Llangoed.



Jo Alexander: 'Walking Chairs'
(John Draper)

Wedi'i gynhyrchu gan Brosiectau Plas Bodfa CIC, mae'r llwybr wedi dod yn rhan nodedig o galendr creadigol yr ynys, fel rhan o ddigwyddiad Stiwdios Agored blynyddol Ynys Môn ledled yr ynys. Dros y penwythnos, dilynodd ymwelwyr y llwybr o Neuadd Bentref Llangoed trwy'r coetir cyfagos ac i lawr i'r arfordir, gan ddod ar draws gweithiau celf wedi'u cuddio ymhlith coed, wrth ymyl nentydd ac ar hyd y glannau. Roedd

cerfluniau wedi'u gwneud o ddeunyddiau naturiol, gweithiau sain, ymyriadau barddoniaeth a pherfformiadau byw yn annog pobl i brofi'r dirwedd mewn ffyrdd newydd.

Eleni, archwiliodd comisiynau newydd themâu daearegol mewn cydweithrediad â Geoparc Byd-eang UNESCO GeoMôn ac ecosystemau Ynys Môn mewn cydweithrediad ag Ymddiriedolaeth Gwiwerod Coch Cymru. Roeddem yn falch o fod hefyd yn gweithio gyda Blaen y Coed, Grŵp Natur Seiriol, Gwirfoddolwyr Myfyrwyr Afonydd Menai, Cartref Gofal Haulfre a Chamau Bach Llangoed.



Blaen y Coed Volunteers: 'Flight of Fancy' (John Draper)

Yr hyn sy'n gwneud Llwybr Cerfluniau Aberlleiniog yn unigryw yw ei gymysgedd o gelf a lle. Yn hytrach na dod â gweithiau celf i oriel, mae'r digwyddiad yn gwahodd artistiaid i ymateb yn uniongyrchol i'r dirwedd: ei llwybrau coetir, golygfeydd arfordirol a haenau o hanes lleol. Fel y dywedodd un mynychwr wrth ddod allan o'r coed ger y castell: "Dydych chi byth yn gwybod beth fyddwch chi'n dod o hyd iddo o amgylch y gornel nesaf: cerflun, cerdd, neu rywun yn chwarae cerddoriaeth yn y coed."

Gyda chynulleidfaoedd sy'n tyfu a rhwydwaith sy'n ehangu o artistiaid a gwirfoddolwyr, mae Llwybr Cerfluniau Aberlleiniog yn parhau i ddangos sut y gall celf fywiogi tirwedd: a dod â chymuned ynghyd yn y broses.

Mae Llwybr Cerfluniau Aberlleiniog yn falch o dderbyn ei gyllid craidd gan Gronfa Datblygu Cynaliadwy, menter Llywodraeth Cymru ar Ardal o Harddwch Naturiol Eithriadol (AHNE) Ynys Môn.



From castle to coast: art comes alive at the Aberlleiniog Sculpture Trail

Julie Upmeyer

Woodland paths, hidden springs and the dramatic coastline around Aberlleiniog Castle were transformed into a living gallery last month as the annual Aberlleiniog Sculpture Trail welcomed visitors from across Anglesey and beyond. Held on 28-29 March, the free event brought together more than 50 artists, performers, naturalists and makers to present installations, performances, land art and guided walks across the community woodlands, Lleiniog Beach and Llangoed Village Hall.

Produced by Plas Bodfa Projects CIC, the trail has become a distinctive fixture in the island's creative calendar, as a part of the annual Anglesey Open Studios event throughout the island. Over the weekend, visitors followed the route from Llangoed Village Hall through the surrounding woodland and down to the coast, encountering artworks tucked among trees, beside streams and along the shoreline. Sculptures made from natural materials, sound works, poetry interventions and live performances encouraged people to experience the landscape in new ways.

This year, new commissions explored geological themes in

puffinpages@gmail.com

collaboration with GeoMôn UNESCO Global Geopark and the ecosystems of Ynys Môn in collaboration with Red Squirrels Trust Wales. We were pleased to also be working with Blaen y Coed, Grŵp Natur Seiriol, Afonydd Menai Student Volunteers, Haulfre Care Home and Chamau Bach Llangoed.



Karen Flippance: 'Feathered Friends' (John Draper)

What makes the Aberlleiniog Sculpture Trail unique is its blend of art and place. Rather than bringing artworks into a gallery, the event invites artists to respond directly to the landscape: its woodland paths, coastal views and layers of local history. As one attendee put it while emerging from the woods near the castle: "You never know what you'll find around the next corner: a sculpture, a poem, or someone playing music in the trees."



Angharad Ffion Martin: 'Illuminating Conservation' (Johnathan Lewis)

With growing audiences and an expanding network of artists and volunteers, the Aberlleiniog Sculpture Trail continues to demonstrate how art can animate a landscape, and bring a community together in the process.

The Aberlleiniog Sculpture Trail is proud to receive its core funding from the Sustainable Development Fund, a Welsh

Government initiative on the Isle of Anglesey Area of Outstanding Natural Beauty (AONB).

The Puffin for children: springtime on the pond
John Nunn

"Ouch!" a cry echoed across the woodland floor. "That hit me right on my head. For goodness sake be more careful!"
"Sorry," came the reply, "but this is our first time on the water this year."

To say that Ben and Simon were somewhat intrigued would be a bit of an understatement. What on earth could be going on? they wondered.

"It came from over there," said Simon. "You know, over near the pond where you fell in the ice last winter."
"Don't remind me," said Ben. "I still have nightmares about that. If Tomos had not been around, I might not be around now either."

The two friends hurried over to the pond to see what could be causing such a racket. When they got there, they could hardly believe their eyes. Boris and Beti Beaver were sailing a little boat across the pond.

"What on earth are you two doing in a boat?" asked Simon.
"You live in the water and swim all the time."
"Yes, but this is *fun*," Boris yelled. "When the wind catches the sail you can go really fast."
"It didn't sound like fun a minute ago," said Ben. "You sounded really cross."
"Yes, well, my head got hit by that boom when it swung as we tacked across the lake. It was a bit of a shock, that's all."

Simon and Ben were quite impressed by the Beavers' use of proper sailing terms, even if they didn't have the faintest idea what they meant.



"What?" said Simon intelligently.
"Come again?" said Ben, even more intelligently.
"It's simple, really," said Beti. "The wind only comes from one direction at a time so if you want the boat to keep power you have to move the sail to catch the wind..."
"...and, of course, use the rudder to steer it."
"Looks like an old broom to me," said Ben.
"It does the job," said Beti.
"Come on," said Boris. "Get in the boat with us. The easiest way for us to explain is to show you..."
"...but watch your head," said Beti.

With that, Simon and Ben clambered into the boat after Boris

had steered it to the shore.

Of course, as is the way with boats, the thing tilted from side to side as they got in, in what seemed to Ben and Simon a most alarming way.

"Don't worry," said Beti. "That's absolutely normal. When we sit you down in a balanced way it will be fine."

And it turned out that Beti was right: with the four sailors sitting sensibly in the boat it was fine.

"It will tilt a bit when the wind fills the sail," explained Boris, "but whichever of us is handling the boom will lean back over the water to help the boat stay upright."

To our landlubberly squirrel and badger friends it all seemed most alarming at first, but as they realised the boat really wasn't going to capsize they soon entered into the spirit of things. When the wind really blew, the little boat flew across the pond and swirled around to go back as everyone ducked when the boom swung across so that the wind could fill in the opposite side.

"This is called 'tacking,'" shouted Beti.

"What is?" asked Simon.

"Turning around like that," said Boris. "It's important to use the right words: the front is called the *bow* and the back the *stern*."
"Well, may I sit in the stern and have a go with the rudder?" asked Ben.

"Of course," said Beti.

...and so the day continued, with the four friends having a go with the rudder and handling the sail and the ropes which held the sails in place.

"Don't call them *ropes*; in a boat they are called *lines*," explained Boris.

As evening came Ben and Simon said farewell to the Beavers and headed back home into the woodland where they told their parents about their wonderful day and explained all the correct sailing terms to use in a boat.

Tomos the Tawny Owl had been watching them all day, aware that most of the friends' adventures ended in disaster, and went home to tell his wife all about it.

"Not a disaster in sight!" he exclaimed in some surprise.

Rhandiroedd Biwmares yn y gorffennol a'r presennol 🌸

Jonathan Keymer

Ers 1917 mae'r rhandiroedd wedi bod ar gornel y Dôl y Castell wrth ymyl y maes parcio ceir a bysiau. Gyda'r Rhyfel Mawr yn parhau ac ymgyrch genedlaethol i greu rhandiroedd a fyddai'n lliniaru effeithiau blocâdau'r Almaen ar gyflenwadau bwyd, daethpwyd i gytundeb ar 12 Ionawr 1917 rhwng perchennog y tir Syr Richard Bulkeley o Baron Hill a Maer, Aldermen a Bwrdeisiaid Biwmares i ddatblygu'r ardal fwy hon o dir ar gyfer garddwyr lleol i wella gwydnwch bwyd yr ynys.

Cyrhaeddodd ôl troed y rhandiroedd uchafbwynt yn ystod yr Ail Ryfel Byd ac roedd yn cynnwys holl ardal y maes parcio presennol.

Ffurfiwyd Cymdeithas Rhandiroedd Biwmares ym 1966 gan ddarparu contractau ffurfiol i bob deiliad plot a phwyllgor newydd i reoli'r safle a chysylltu â Chyngor y Dref. Mae cofnodion cyfarfod cyntaf y pwyllgor yn bodoli ac yn dangos bod eitemau dan drafodaeth yn cynnwys cynyddu rhenti blyneddol i godi arian ar gyfer gwelliannau, gosod arwydd parhaol i atal tresmaswyr a cheisio iawndal gan y cynfor am ddfrod a achoswyd gan wartheg i'r ffens berimedr!

Diflanodd y pwyllgor gwreiddiol i ddim o fewn degawd ond cafodd ei adfywio yn y 1990au gan Bill a Joan Hopkin a draffodd y rhan fwyaf o'r contractau sydd ar waith gyda chynfor y dref heddiw.

Y dyddiau hyn, mae'r safle'n cynnwys 48 o blotiau er, oherwydd eu maint mawr, mae llawer wedi'u rhannu'n hanner plotiau. Cyn belled â bod deiliad plot yn bresennol, mae croeso i'r cyhoedd archwilio'r safle a mwynhau'r golygfeydd anhygoel o'r Castell, Afon Menai ac Eryri.

Os oes gynnwch ddi-ddordeb mewn cael eich plot eich hun, mae'r rhestr aros yn fyr ar hyn o bryd. Byddwch yn ein canfod yn griw croesawgar a chefnogol iawn, yn fwy na pharod i rannu cynfor ymarferol a hyd yn oed gynnig cymorth ymarferol pan fo angen. Wrth ymuno â'r rhestr aros, rhoddir aelodaeth gysylltiol ynghyd â gwahoddiadau i bob digwyddiad cymdeithasol fel, erbyn i chi gael eich plot eich hun, eich bod yn gyfarwydd iawn â'r aelodau eraill.



Mae'r rhandiroedd i'r dde o'r Castell; mae Cae Mair heb ei ddatblygu ar y brig yn y canol, mae'r 'Tai Newydd' sy'n datblygu (Maes Hyfryd, ac ati) ar y brig ar y dde, ac mae'r pwll nofio ar y gwaelod yn y canol. The allotments are to the right of the Castle; an undeveloped Cae Mair is at top centre, the developing 'New Houses' (Maes Hyfryd, etc.) is at top right and the swimming pool is at bottom centre (via Jonathan Keymer)

I dderbyn ffurflen gais aelodaeth, anfonwch neges at beau marisallotmentsociety@outlook.com.



The Beaumaris Allotments past and present

Jonathan Keymer

Since 1917 there have been allotments on the corner of Castle Meadow beside the car and coach park and the B5109. With the Great War raging on and a nationwide drive to create allotments that would mitigate the effects of German blockades upon food supplies, agreement was reached on 12 January 1917 between landowner Sir Richard Bulkeley of Baron Hill and the Mayor, Aldermen and Burgesses of Beaumaris to develop this larger area of land for local gardeners to improve the island's food resilience.

The allotments' footprint peaked during the Second World War and took in the whole of the area of the current car park.

The Beaumaris Allotments Society was formed in 1966, providing formalised contracts for all plotters and a new committee to manage the site and liaise with the Town Council. Minutes of the very first committee meeting remain and show items under discussion included the increasing of annual rents to raise funds for improvements, the siting of a permanent sign to deter trespassers and the seeking of redress from the Town

puffinpages@gmail.com

Council for damage caused by cows to the perimeter fence!

The original committee faded to nothing within a decade but was revived in the 1990s by Bill and Joan Hopkin who negotiated most of the contracts with the Town Council in place today.

Nowadays the site contains 48 plots, although due to their large size many are divided into half-plots. As long as a plot-holder is present, the public are welcome to explore the site and take in the lovely views of the castle, Menai Strait and Eryri.

If you are interested in having your own plot, the waiting list is currently short. You would find us a very welcoming and supportive lot, only too glad to share practical advice and even offer hands-on help when required. On joining the waiting list, associate membership is granted along with invitations to all social events so that by the time you get your own plot, you are well acquainted with other members.

To receive a membership application form, contact beau marisallotmentsociety@outlook.com.



Chess as Art

Fianchetto 66

The influential conceptual artist and talented chess player from the 20th century, Marcel Duchamp, claimed that "while artists are not all chess players, all chess players are artists". A gifted player himself, Duchamp believed that true art must serve the mind. Essentially he was saying that the creative process was more important than the end product, a notion that is as widely debated today as it was in 1917, when Duchamp unveiled what was arguably his most famous work, *Fountain*.

One of the most prolific conceptual artists of the 21st century, Ryan Gander, is of much the same mind, and is convinced that we are all responsible for everyday acts of creativity that are often more inspiring than the works of celebrated contemporary artists. One of his larger installations, *Dad's Halo Effect*, outside the Connell Co-op College in Manchester is of three 9' (2.75m) tall stainless steel chess pieces in a checkmate position, but with no indication of colour, as a representation of the importance of the process leading to that final position, rather than an emphasis on who actually won the game.



Ryan Gander's sculpture, *Dad's Halo Effect*, at Connell Co-op College, Manchester (Fianchetto 66)

This is something that many chess players will agree with, referring to the "artist's joy" of creating a series of moves in the mind, before committing them to the board.

Whether one regards the game of chess as an art form, mind sport or science, it is undeniable that the sheer number of art works that have featured chess as their subject: from Thomas Eakins's *The Chess Players* in New York's Metropolitan, through Germaine Richier's *Chessboard* in the Tate Modern, to Ryan Gander's *Dad's Halo Effect*, as well as the thousands of beautifully carved, moulded and cast chess sets that are

(continued on page 26)



Canolfan
Hamdden
Beaumaris

MWY NA CHANOLFAN

HAMDDEN YN UNIG

NEWYDDION

Diweddariad ar ein hymgyrch
Cyllido Torfol

• • GWNAETHON NI FE! • •

Cymaint o bobl yn ein cymuned wnaeth hyn yn bosibl, ac gyda chymorth Chwaraeon Cymru fe wnaethon ni ragori ar ein targed gwreiddiol gan godi dros £50,000 tuag at gam nesaf ein prosiect uchelgeisiol.

I'n cymuned wych, ein staff a'n gwirfoddolwyr: mae'r Ganolfan yn ddiolch i chi am eich haelioni a'ch cefnogaeth anhygoel...

Rydych chi i gyd yn anhygoel!

PWYSIG
Prisiau aelodaeth
a mynediad
cynnar i'r gampfa

O 1 Ebrill ymlaen, byddwn yn gwn-eud rhai newidiadau i'n hopsiynau aelodaeth, yn ogystal â chynnig mynediad oriau cynnar newydd sbon i'n campfa ar gyfer ein cws-meriaid Debyd Un-iongyrchol. Gweler isod am fanylion ein cynlluniau aelodaeth newydd.

Gweler isod am fanylion ein cynlluniau aelodaeth newydd.

**Prisiau
aelodaeth
1 Ebrill 2026**



Pay as you go prices:
Members £6 per class or session.
£25 annual fee includes parking pass.
Non Members £7 per class or Session. Parking fee applies.



Weekly:
Weekly unlimited Class, Sport and Gym pass
£20 valid for 7 days from purchase. Parking Fee applies unless you have a yearly membership.



Monthly Bronze: **DIRECT DEBIT ONLY**
£27 per month unlimited gym use, early morning entry. Includes annual membership fee and parking pass.



Silver: **DIRECT DEBIT ONLY**
£37 per month unlimited gym including early morning entry, 3 classes or sports sessions per week. Includes annual membership fee and parking pass.



Gold: **DIRECT DEBIT ONLY**
£42 per month unlimited gym use including early morning entry, 5 sports sessions or classes per week. Includes annual membership fee and parking pass.



Platinum: **DIRECT DEBIT ONLY**
£47 per month unlimited gym, plus early morning entry. Unlimited sports and classes. Includes annual membership fee and parking pass.

BETH SY'N NEWYDD YN Y GANOLFAN?



Dros y deuddeg mis diwethaf rydym wedi bod yn gweithio gyda Arolygiaeth Gofal Cymru i wella ein cynnig i deulu-

oedd lleol yn ystod gwyliau'r ysgol.

Mae ein gwersylloedd dydd yn cyn-nig cymysgedd o brofiadau creadigol ac egniol mewn amgylchedd diogel a chefnogol lle mae'r plant yn dod gyntaf.

DIGWYDDIADAU I DDOD

Inner Wheel
Te Prynawn Elusennol
Dydd Sadwrn 9 Mai, 2.00yp-4.00yp



Gŵyl Beaumaris Festival
20 Mai-25 Mai

Darllenwch bopeth amdano yn
The Puffin 56, tudalen 15



Cyngherddau Haf
Band Biwmares

Dydd Sadwrn/Dydd Sul
11/12 Gorffennaf



FITNESS • FFITRWYDD

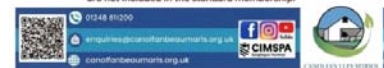


Leisure / Entertainment / Arts / Sports £6 members £7 non-members
LEISURE / HAMDDEN Monthly prices available
Hamdden / Aelodaeth / Cefnogaeth / Chwaraeon

Fitness Classes / Dosbarthiadau ffitrwydd

Day/Dydd	Class/Dosbarth	Time/Amser	Instructor/Hyfforddwr
Monday Dydd Lluon	Yoga	9:30-10:45	Katie
	Yogalates	11-12	Katie
	Body sculpt	1-2 pm	Sam
	Fabbs 65+ Bootcamp Yoga	2:30-3:30 5:30-6:30 8:45-7:45	Sam Natalie Andrea
Tuesday Dydd Mawrth	Tai chi	9:30-11	Phil
	Falls prevention NHS Referral	11:15-12:15	Carol
	Mindfulness Body sculpt Advanced Step and Abs	1-3 5-6 Sam 6-7 Sam	Anerette Booking essential Booking essential
Wednesday Dydd Mercher	Joint strength circuit	11-12 Sam	Sam
	Pilates	1-2 Sam	Sam
	Spin Assisted gym	5:50-6:30 8-8:30	Booking essential Arron
Thursday Dydd Iau	Gentle Yoga	9:45-11:15	Kath
	Pilates	1:30-2:30	Sam
	Step and tone Body sculpt	5-5:50 Sam 6-7 Sam	Booking essential Booking essential
Friday Dydd Gwener	Circuits Ballroom Dance	11:30-12:30 7-9	Sam Caroline

PLEASE NOTE: Classes shown in maroon-crimson are not included in the standard membership.



☎ 01248 811200

✉ enquiries@canolfanbeaumaris.org.uk

🌐 www.canolfanbeaumaris.org.uk/

🌐 www.facebook.com/canolfan.beaumaris.7/



Canolfan
Hamdden
Beaumaris

MORE THAN JUST

A LEISURE CENTRE

NEWS

**Update on our
Crowdfunding Campaign**

• • WE DID IT! • •

So many in our community made it happen and with the help of Sport Wales we smashed our original target raising over £50,000 towards the next phase of our ambitious project.

To our wonderful community, staff and volunteers: the Canolfan thanks you for your generosity and overwhelming support...

You are all amazing!

**IMPORTANT
Membership prices
and early
gym access**

From 1 April we will be making some changes to membership options, as well as offering brand new early hours access to our gym for our Direct Debit customers.

Please see below for details of our new membership plans.

**Membership prices
1 April 2026**



Pay as you go prices:
Members £6 per class or session.
£25 annual fee includes parking pass.
Non Members £7 per class or Session. Parking fee applies.



Weekly:
Weekly unlimited Class, Sport and Gym pass
£20 valid for 7 days from purchase. Parking Fee applies unless you have a yearly membership.



Monthly Bronze: DIRECT DEBIT ONLY
£27 per month unlimited gym use, early morning entry. Includes annual membership fee and parking pass.



Silver: DIRECT DEBIT ONLY
£37 per month unlimited gym including early morning entry, 3 classes or sports sessions per week. Includes annual membership fee and parking pass.



Gold: DIRECT DEBIT ONLY
£42 per month unlimited gym use including early morning entry, 5 sports sessions or classes per week. Includes annual membership fee and parking pass.



Platinum: DIRECT DEBIT ONLY
£47 per month unlimited gym, plus early morning entry. Unlimited sports and classes. Includes annual membership fee and parking pass.

**WHAT'S NEW AT
THE CANOLFAN?**



Over the last twelve months we have been working with the Care Inspectorate of Wales to enhance our offer to

local families during school holidays.

Our day camps provide a mix of creative and active experiences in a safe and supportive environment where the children come first.

SOME FORTHCOMING EVENTS

**Inner Wheel
Charity Afternoon Tea
Saturday 9 May, 2.00pm-4.00pm**



**Gŵyl Beaumaris Festival
20 May-25 May**

Read all about in
The Puffin 56, page 15



**Beaumaris Band Summer
Concerts
Saturday/Sunday 11/12 July**



FITNESS • FFITRWYDD



Leisure / Entertainment / Arts / Sports

LEISURE / HAMDDEN

Hamdden / Adloniant / Cefnysylltu / Chwaerwne

£6 members £7 non-members Monthly prices available

Fitness Classes / Dosbarthiadau ffitrwydd

Day/Dydd	Class/Dosbarth	Time/Amser	Instructor/Hyfforddwr
Monday Dydd Llun	Yoga	9:30-10:45	Katie
	Yogalates	11-12	Katie
	Bodysculpt	1-2 pm	Sam
	Fabbs 65+	2:30-3:30	Sam
	Bootcamp	5:30-6:30	Natalie
Tuesday Dydd Mawrth	Yoga	6:45-7:45	Andrea
	Tai chi	9:30-11	Phil
	Falls prevention NHS Referral	11:15-12:15	Carol
Wednesday Dydd Mercher	Mindfulness	1-3	Annette
	Bodysculpt	5-6 Sam	Booking essential
	Advanced Step and Abs	6-7 Sam	Booking essential
	Joint strength circuit	11-12 Sam	Sam
Thursday Dydd Iau	Pilates	1-2 Sam	Sam
	Spin	5:50-6:30	Booking essential
	Assisted gym	8-8:30	Arnon
	Gentle Yoga	9:45-11:15	Kath
Friday Dydd Gwener	Pilates	1:30-2:30	Angle 07740 902125
	Step and tone	5-5:50 Sam	Booking essential
	Bodysculpt	6-7 Sam	Booking essential
Friday Dydd Gwener	Circuits	11:30-12:30	Sam
	Ballroom Dance	7-9	Caroline

PLEASE NOTE: Classes shown in maroon-crimson are not included in the standard membership.



☎ 01248 811200

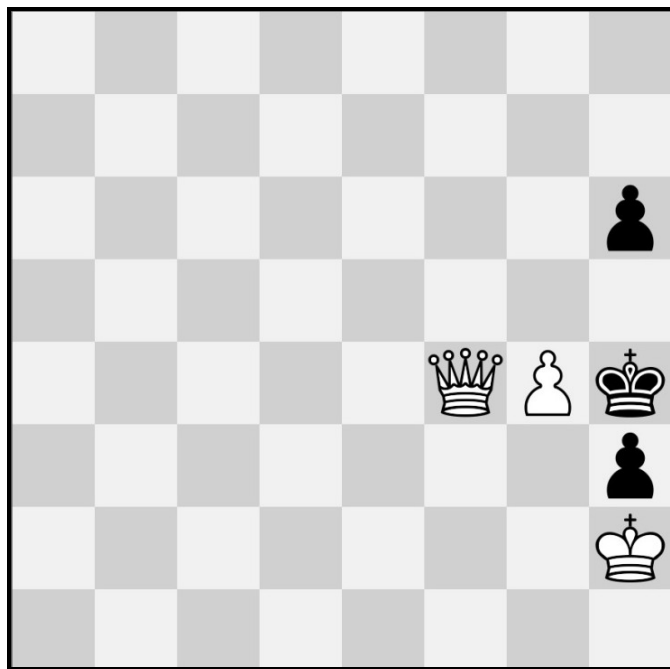
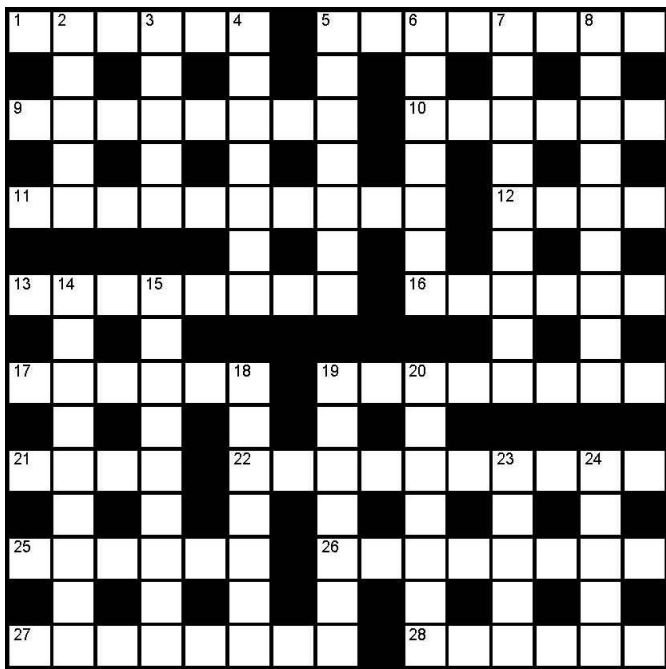
✉ enquiries@canolfanbeaumaris.org.uk

🌐 www.canolfanbeaumaris.org.uk/

🌐 www.facebook.com/canolfan.beaumaris.7/

The Governor's Quick Crossword 24

Fianchetto 66's Chess 15



Across

- 1 On a horse (6)
- 5 Maybe unreal (8)
- 9 Has money (4-2-4)
- 10 Not injured (6)
- 11 Rain warning, maybe? (5,5)
- 12 podium (4)
- 13 Jewel (8)
- 16 Cowardly (6)
- 17 Mix (4,2)
- 19 Aristocratic titles (8)
- 21 Mend (4)
- 22 One cigarette after another (5,5)
- 25 Inactivity (6)
- 26 Possibly heavenly? (8)
- 27 Cutters (8)
- 28 Pastels (anag) (6)

Down

- 2 Incompetent (5)
- 3 Lazy person (5)
- 4 Small dumpling (7)
- 5 Metal source (4,3)
- 6 Washing (7)
- 7 Set for a time or date (9)
- 8 Worm shape (9)
- 14 Genuine (9)
- 15 Loss of movement (9)
- 18 Artist (7)
- 19 Underwear? (7)
- 20 Family bond (7)
- 23 Timer (anag) (5)
- 24 African cattle pen (5)

(from page 23)

also regarded by many as works of art.

Our puzzle this time is a composition from the mind of Tibor Schönberger, a little known composer of chess puzzles from the early 20th century. It is white to play and mate in two in, one might say, artistic style.

📄 Marcel Duchamp
https://en.wikipedia.org/wiki/Marcel_Duchamp

📄 Ryan Gander
https://en.wikipedia.org/wiki/Ryan_Gander

📄 Dad's Halo Effect: 'Globally admired' Ryan Gander work revealed
www.bbc.co.uk/news/uk-england-manchester-30209457

Sulgwyn neu Bentecost? 🏴󠁧󠁢󠁥󠁮󠁧󠁿

Parch Huw Butler, Arweinydd Ardal Gweinidogaeth Bro Seiriol

Tybed beth sy'n dod i'ch meddwl pan fyddwch yn clywed y gair *Sulgwyn*? Efallai eich bod yn meddwl am Wyl y Banc Sulgwyn fel amser i ymlacio a mwynhau heulwen gynnar y gwanwyn. Efallai eich bod yn cofio Gorymdeithiau Sulgwyn a oedd yn ddigwyddiadau poblogaidd iawn flynyddoedd yn ôl pan fyddai eglwysi yn y gymuned leol yn ymgynnull ar gyfer Taith Tystiolaeth, gan orffen gyda dathliad arbennig. Efallai nad ydych yn gwybod dim o gwbl am Sulgwyn! Mae'r gair *Sulgwyn* yn ffurf fyrrach o *Sulgwyn Sul*, sy'n tarddu o ymadrodd Hen Saesneg sy'n llythrennol yn golygu 'Sul Gwyn', ac mae'n gysylltiedig â'r arfer o wisgoedd gwyn gan y rhai a oedd newydd gael eu bedyddio ar yr wyl arbennig hon a elwir yn fwy cywir o fewn Calendr yr Eglwys yn Bentecost.

Mae Gŵyl y Pentecost yn dathlu'r digwyddiadau dirgel a roddodd rym i'r disgyblion gyhoeddi'r Newyddion Da am fywyd, marwolaeth, atgyfodiad a esgyniad Iesu. Daeth yr Ysbryd Glân

hwn mewn gwynt a tân a'u 'chwythu ymaith', gan roi 'tân yn eu calonau a'u meddyliau' i gyfathrebu neges cariad Duw yng Nghrist ym mhob iaith fel y gall pawb ddod i wybod a de-all. Disgrifir rhodd yr Ysbryd Glân yn aml fel un o greadigrwydd. Yn y modd hwn, mae'r Ysbryd Glân yn amlygu pob dull posibl i gyfathrebu a dathlu rhyfeddod cariad Duw: drwy iaith, celf, cerddoriaeth, dawns, harddwch y greadigaeth, a chynhesrwydd perthnasoedd dynol...

Pentecost yn syrthio ar 24 Mai eleni, sy'n cyd-daro â Gŵyl Banc y Gwanwyn ac Wythnos Gŵyl Biwmares (20-25 Mai), sydd ei hun yn ddathliad o greadigrwydd artistig.

Bydd Eglwys y Santes Fair a Sant Nicolas, yn cynnal Gosber Gorawl y Pentecost gyda Chantorion Monteverdi ar ddydd Sul 24 Mai am 5.30yp. Yn ogystal, bydd yr Eglwys (yr ail adeilad hynaf yn y dref ar ôl y castell, yn dyddio o tua 1330) ar agor yn ddyddiol i groesawu ymwelwyr. Mae ei phensaernïaeth hardd ac ysbrydoledig a'i nifer o nodweddion diddorol yn olrhain llinell amser drwy wyth canrif o dreftadaeth Gristnogol a chymdeithasol.

Gall ein croesawwyr eich helpu i ddarganfod nifer o straeon, o arch garreg y 13^{eg} ganrif y Dywysoges Siwan (Joan) i'r ffenestri gwydr lliw trawiadol o'r 20^{fed} ganrif.

Offrwrch weddi a goleuwch gannwyll yn y Capel y Forwyn Fair, gan gofio bod pobl wedi gwneud hynny ers 700 mlynedd yn y lle sanctaidd hynafol hwn.

Bydd hefyd Arddangosfa Gelf wedi'i chynnal gan Grŵp Arlunio Glasinfryn ynghyd â nifer o stondinau celf a chreffft i'w gweld, yn ogystal â llwybrau i blant a gweithgareddau crefft."

Boed i chi adnabod y 'diwrnod sanctaidd' hwn fel Sulgwyn neu Bentecost, dewch draw i Eglwys y Santes Fair i ddathlu creadigrwydd yn ei holl harddwch ac amrywiaeth, ac yn ei dro i'ch tynnu at edmygedd a rhyfeddod wrth rym Cariad dwyfol.

Gellir dod o hyd i fanylion pob gwasanaeth a digwyddiad ar wefan a thudalen Facebook Broseiriol.

Os hoffech dderbyn ein bwletinau newyddion wythnosol am wasanaethau a digwyddiadau, neu os hoffech ragor o wybodaeth, anfonwch e-bost at y cyfeiriad isod.

☎ 07864 765382

✉ huwbutler@churchinwales.org.uk

📄 Ardal Weinidogaeth Bro Seiriol Ministry Area
www.broseiriol.net

📄 Eglwysi Bro Seiriol Churches
www.facebook.com/BroSeiriol/



Whitsun or Pentecost?

Rev Huw Butler, Ministry Area Leader of Bro Seiriol

I wonder what springs to mind when you hear the word *Whitsun*? You may think of Whitsun Bank Holiday as a time to relax and enjoy the early Spring sunshine. Perhaps you remember Whitsun Marches which were very popular events years ago when churches in the local community would gather together for a Walk of Witness culminating in a special celebration. You may not know anything about Whitsun at all! The word *Whitsun* is the shortened form of *Whitsunday*, deriving from an old English phrase literally meaning 'White Sunday', being linked to the custom of wearing white robes by the newly baptised on this special festival known more properly within the Church Calendar as Pentecost.

The Feast of Pentecost celebrates the mysterious events empowering the disciples to proclaim the Good News of the life, death, resurrection and ascension of Jesus. This coming of the Holy Spirit in wind and flame literally 'blew them away', putting 'fire into their hearts and minds' to communicate the message of God's love in Christ in every language so that all may come to know and understand. The gift of the Holy Spirit is often described as one of creativity. In this way the Holy Spirit manifests every means possible to communicate and celebrate the wonder of God's love: through language, art, music, dance, the beauty of creation, the warmth of human relationships...

Pentecost actually falls on 24 May this year, which coincides with Spring Bank Holiday and the Beaumaris Festival Week (20-25 May), which itself is a celebration of artistic creativity.

The Church of St Mary and St Nicholas, Beaumaris, will be hosting a Pentecost Choral Evensong with the Monteverdi Singers on Sunday 24 May at 5.30pm. In addition, the Church (the second oldest building in the town after the castle, dating from around 1330) will be open daily to welcome visitors. Its beautifully inspiring architecture and many interesting features trace a timeline through eight centuries of Christian and social heritage.

Our welcomers can help you discover many stories, from the 13th century Stone Coffin of Princess Joan (Siwan) to the stunning 20th century stained glass windows.

Offer a Prayer and light a candle at the Lady Chapel, remembering that people have done so for 700 years in this ancient holy place.

There will also be an Art Exhibition hosted by Grwp Arlunio Glasinfryn Art Group and various art and craft stalls to view, as well as children's trails and craft activities.

Whether you know this 'holy-day' as Whitsun or Pentecost, do come along to the Church to celebrate creativity in all of its beauty and variety and in turn drawing you to awe and wonder at the power of divine Love.

Details of all services and events can be found on the Bro-puffinpages@gmail.com

seiriol website and Facebook page.

If you would like to receive our weekly news bulletins for services and events, or would like further information, please send an e-mail to the address below.

☎ 07864 765382

✉ huwbutler@churchinwales.org.uk

📄 Ardal Weinidogaeth Bro Seiriol Ministry Area
www.broseiriol.net

📄 Eglwysi Bro Seiriol Churches
www.facebook.com/BroSeiriol/

The National Garden Scheme in North Wales 2026

Kay Laurie & Heather Broughton, Joint County Organisers, Gwynedd & Anglesey

The National Garden Scheme (NGS) has some wonderful gardens opening this year across Gwynedd and Anglesey, including a host of exciting new gardens to visit.

Through the generosity of garden owners who opened their gardens to the public, the NGS donated nearly £3.9 million in 2025 to nursing and health beneficiaries.

Sums distributed at the end of 2025 included:

- Carers Trust: £450,000
- Hospice UK: £450,000
- Macmillan Cancer Support: £450,000
- Marie Curie: £450,000
- Parkinson's UK: £450,000
- The Queen's Institute of Community Nursing: £475,000

Charities have been supported by the NGS for decades, and this sustained funding supports their long-term planning. Smaller sums, still substantial, go to charities supporting gardeners and those who link together gardens and health, including the Army Benevolent Fund and The Country Trust.

You can help us raise even more this year by inviting your family and friends to join your garden visits. Many gardens offer delicious cakes and refreshments and sell unusual plants, and many also welcome dogs on leads: please check first to avoid disappointment. It's a lovely way to support these important charities whilst enjoying yourself, too.

Please see the two yellow panels in this article, and look out for the yellow booklets that are circulating, or visit the NGS website and click on the *Find a garden* link. This allows you to find gardens according to specific dates and locations. The links are given below.

Copies of our bilingual North Wales booklet:

- Gerddi ar agor i elusen: Gogledd Cymru, 2026
Gardens open for charity: North Wales 2026

are available from libraries and tourist information centres.

Gwynedd and Anglesey NGS Facebook and Instagram pages have information on garden openings and special events. Follow us to be alerted to forthcoming Open Gardens or unexpected cancellations.

A well-kept secret is 'open by arrangement' gardens that can be visited during the season. It's a special way to arrange a social trip out for any group of people, including family and friends. Indeed, there's a very special Japanese Garden, Cuddfan, close to Llanddona that will open this summer by arrangement... who knew? To book a visit contact Jacque Blakeley at blakeley@btinternet.com for more details. Why not suggest organising an outing for a club or group to which you belong? An e-mail or phone call to the garden owner is all that's usually required: visitor numbers and availability vary.

For more information and detailed directions to all the open gardens listed we recommend that you visit the NGS website before you visit for full and up-to-date information about our

INGS Open Gardens ☼ May-September 2026

- ☼ **Saturday 2 May**
 - Llanidan Hall, Brynsiencyn LL61 6HJ
- ☼ **Sunday 3 May**
 - **NEW** Glyn Cywrach, Talsarnau LL47 6TE
- ☼ **Saturday 9 May**
 - Plas Pont y Cribyn, Llannor, Pwllheli LL53 8LZ
- ☼ **Saturday 16 May**
 - Tyn y Pant, Boduan, Pwllheli LL53 6DT
- ☼ **Sunday 17 May**
 - Cyplau, Llanbedr LL45 2ND
 - Gwaelod Mawr, Caergeiliog LL65 3YL
- ☼ **Thursday 21 May**
 - Castle Court, Rating Row, Beaumaris LL58 8AL
- ☼ **Friday 22 May**
 - Castle Court, Rating Row, Beaumaris LL58 8AL
- ☼ **Sunday 24 May**
 - **NEW** Hafod Garegog, Nantmor, Caernarfon LL55 4YN
- ☼ **Tuesday 26 May**
 - **NEW** Glyn Cywrach, Talsarnau, LL47 6TE
- ☼ **Saturday 13 June**
 - Crûg Farm, Griffiths Crossing, Caernarfon LL55 1TU
 - **NEW** Gerddi 'Stiniog, Llan Ffestiniog LL41 4AB
- ☼ **Sunday 14 June**
 - Pensychnant, Sychnant Pass, Conwy LL32 8BJ
- ☼ **Thursday 18 June**
 - **NEW** Aber Artro Hall, Llanbedr LL45 2PA
- ☼ **Saturday 20 June**
 - Llanidan Hall, Brynsiencyn LL61 6HJ
- ☼ **Sunday 21 June**
 - **NEW** Aber Artro Hall, Llanbedr LL45 2PA
- ☼ **Saturday 27 June**
 - Llwydiarth, Mynytho, Pwllheli LL53 7RW
- ☼ **Sunday 28 June**
 - Llwydiarth, Mynytho, Pwllheli LL53 7RW
- ☼ **Saturday 4 July**
 - Caswallon, Llaneilian LL68 9NN
 - Llanidan Hall, Brynsiencyn LL61 6HJ
 - Tŷ Cadfan Sant, National Street, Tywyn LL36 9DD
 - Y Felin Rhyd Hir, Efailnewydd, Pwllheli LL53 8TN
- ☼ **Sunday 5 July**
 - Tŷ Cadfan Sant, National Street, Tywyn LL36 9DD
 - Y Felin Rhyd Hir, Efailnewydd, Pwllheli LL53 8TN
- ☼ **Saturday 11 July**
 - **GROUP OPENING** Llanddona Village Gardens, Llanddona LL58 8TU, etc.
- ☼ **Sunday 12 July**
 - Pensychnant, Sychnant Pass, Conwy LL32 8BJ
- ☼ **Saturday 18 July**
 - Tyn y Pant, Boduan, Pwllheli LL53 6DT
- ☼ **Sunday 19 July**
 - Crûg Farm, Griffiths Crossing, Caernarfon LL55 1TU
- ☼ **Saturday 25 July**
 - Coed Tŷ Mawr, Pwllheli LL53 8EH
- ☼ **Sunday 26 July**
 - Coed Tŷ Mawr, Pwllheli LL53 8EH
 - Maenan Hall, Maenan, Llanrwst LL26 0UL
- ☼ **Sunday 2 August**
 - Plas Pont y Cribyn, Llannor, Pwllheli LL53 8LZ
- ☼ **Sunday 16 August**
 - The Granary, Felin Hen Road, Bangor LL57 4BB
- ☼ **Saturday 5 September**
 - Treborth Botanic Garden, Bangor University, Bangor LL57 2RQ
- ☼ **Sunday 6 September**
 - Plannwch y Plas, Dinas Mawddwy, Machynlleth SY20 9JB
- ☼ **Sunday 13 September**
 - **NEW** Craig Ogwen, Ogwen Terrace, Bethesda LL57 3AY

garden openings.

♦ ♦ ♦

Croeso i'n gerddi yn y rhan syfrdanol brydferch hon o Gymru. Chwiliwch yn *Find a garden* am gerddi a dyddiadau fydd o ddiddordeb i chi. Dilynwch tudalennau Facebook Gwynedd a Môn NGS am fwy o wybodaeth am y gerddi fydd ar agor yn eich ardal leol.

Am fwy o wybodaeth a chyfarwyddiadau manwl i'r gerddi, ewch i'r wefan canlynol.

📄 National Garden Scheme

<https://ngs.org.uk>

📄 Find a garden

<https://findagarden.ngs.org.uk>

📄 Enjoy an exclusive garden visit with our wonderful By Arrangement option

<https://ngs.org.uk/enjoy-a-special-visit-to-a-garden-gem-with-our-by-arrangement-option/>

📄 Facebook: Gwynedd and Anglesey NGS

www.facebook.com/gwyneddandangleseyngs/

...in Seiriol Ward...

Andrew Perrott

You'll find two lists of Open Gardens in Anglesey, Conwy and Gwynedd in this article:

- List 1: the gardens that are open from May to September
- List 2: the gardens that are open by arrangement

The list of Open Gardens stretches from Conwy itself, via Anglesey, right down to Tywyn and Machynlleth...so get your diaries out!

As you'll see from lists there will be Open Gardens again right on our doorstep, a group of nine in Llanddona on 11 July, and others in Penmon, Beaumaris and Llanddona, and also further afield, including Brynsiencyn and Bull Bay.

The insert gives information about the individual Llanddona Open Gardens and a map. If the insert is missing, you'll find it on-line at www.seiriolalliance.co.uk/newsletters/ as the last two pages of The Puffin 56.

Thursday 21 May, Friday 22 May, 11.00am-4.00pm

☼ Castle Court, Rating Row, Beaumaris LL58 8AL

Saturday 11 July, 11.00am-4.00pm

☼ Tŷ Capel Peniel, Llanddona LL58 8TU

☼ Capel Peniel, Llanddona LL58 8TU
the War Memorial; public access at any time

☼ Glangors, Llanddona LL58 8TU

☼ Pen-y-Gorllewin, Llanddona LL58 8TU

☼ Y Gilfach, Llanddona LL58 8TS

☼ Llain Gron, LL58 8UF

☼ Neuadd Bentref Llanddona Village Hall, LL58 8TS

☼ Cefn Farm, Llangoed LL58 8PW

☼ Bryn Rhedyn, Llangoed LL58 8PW

☼ Ger yr Afon, Llangoed LL58 8PW

The gardens are all different: some are neat as a pin, a couple are 'a work in progress', and others include a working farm.

All are interesting and full of colour, and many have spectacular views over the Menai Strait, Red Wharf Bay and across the breadth of Anglesey.

By arrangement

☼ Cuddfan, Llanddona LL58 8TR (see list 2)

☼ Llwyn Onn, Penmon LL58 8SG (see list 2)

☼ The Old School, Penmon LL58 8RU (see list 2)

From the bilingual NGS booklet *Gerddi ar agor i elusen: Gogledd Cymru, 2026...*

☼ Croeso i erddi hyfryd Gogledd Cymru

Eleni, daw ein siroedd sef Ynys Môn; Conwy; Sir Ddinbych; Sir y Fflint; Gwynedd a Wrecsam ynghyd mewn un llyfryn dwyieithog. Ledled Gogledd Cymru, byddwch yn gweld perlau o erddi preifat, y mae'r perchenogion wedi'u hagog yn hael i ni eu mwynhau, Drwy agor ar gyfer y Cynllun Gerddi Cenedlaethol gyda'n gilydd rydym yn casglu symiau sylweddol er budd elusen. Darllenwch fwy am 'sut y mae eich ymweliadau yn helpu i newid bywydau' yn y llyfryn hwn.

P'un a fyddwch yn ymweld â gardd yn uchel yn y brynau, neu ger y môr, gallwch edrych ymlaen at gael amser hyfryd. Yn aml, mae te a chacen ar gael, a chroesewir plant; weithrau bydd planhigion ar werth a chroesewir cŵn mewn rhai gerddi. Ceir rhagor o fanylion ar y symbolau ger y gerddi rydych yn bwriadu ymweld â nhw. Mae rhai perchenogion gerddi hefyd yn croesawu ymweliadau grŵp drwy drefnu ymlaen llaw. Weithiau bydd gan ardd agoriad 'dros dro' na chaiff ei ddangos yma. Dilynwch ni ar Facebook ac Instagram i gael gwybod beth sy'n digwydd. Os byddwch yn teithio'n bell, ewch i findagarden/ngs.org.uk rhag ofn y bydd newidiadau byr rybudd.

Diolch am eich cefnogaeth barhaus i'r Cynllun Gerddi Cenedlaethol.

From the bilingual NGS booklet *Gardens open for charity: North Wales 2026...*

☼ Welcome to the wonderful gardens of North Wales

This year our counties of Anglesey; Conwy; Denbighshire; Flintshire; Gwynedd and Wrexham come together in one bilingual booklet. Right across North Wales you'll find hidden gems of private gardens, generously opened by the owners for us to enjoy. Through opening for the National Garden Scheme together we raise significant sums in support of charity. Read more about 'how your visits help change lives' in this booklet.

Whether you visit a garden high in the hills, or by the sea you can look forward to a lovely time. Tea and cake are often available and children are welcome; sometimes plants are for sale and dogs are welcome in certain gardens. Checkout the symbols by the gardens you plan to visit for more details. Some garden owners also welcome visiting groups by prior arrangement. Occasionally a garden will have a 'pop-up' opening not shown here. You can follow us on Facebook and Instagram to know what's coming up. If you're travelling far, checkout findagarden/ngs.org.uk in case of short notice changes.

📄 National Garden Scheme
<https://ngs.org.uk>

📄 Find a garden
<https://findagarden.ngs.org.uk>

📄 Enjoy an exclusive garden visit with our wonderful By Arrangement option
<https://ngs.org.uk/enjoy-a-special-visit-to-a-garden-gem-with-our-by-arrangement-option/>

📄 Facebook: Gwynedd and Anglesey NGS
www.facebook.com/gwyneddandangleseyngs/

...and in Llanddona... oh, the excitement!
Lucy Low

The excitement is building up for the third Llanddona Village Open Gardens Day on 11 July!

Preparations have already started: seed and plant catalogues are obligatory armchair reading, the pages on bedding plants, puffinpages@gmail.com

containers and flowerbeds are being well-thumbed, specifically for plants that'll flower at The Appropriate Time...

Specialist compost is being sourced to ensure that the Llanddona pots and planters will look their best for the Big Day... covert bulk deliveries of Miracle-Gro® are taking place... DIY potions are being made in potting sheds throughout Llanddona involving comfrey and lemonade...

2 NGS Open Gardens ☼ May-September 2026 Gardens open by arrangement

Arrange a personalised garden visit with your club or group of friends on a date to suit you

The gardens open by arrangement are listed below, with contact names and details

☼ indicates that the garden is open on a set date as well; see list 1

- ☼ Cae Newydd, Rhosgoch LL66 0BG
Nigel & Hazel Bond
07378 844295, nigel@cae-newydd.co.uk
- ☼ Caswallon, Llaneilian LL68 9NN
Julian & Gillian Sandbach
gillian.sandbach@mac.com
- ☼ Coed Tŷ Mawr, Tŷ Mawr, Bryn Croes, Pwllheli LL53 8EH
Nonni & David Goadby
07799 877590, nonni@goadby.net
- ☼ Cuddfan, Llanddona LL58 8TR
Jacquie Blakeley
07836 549361, jacqueline.blakeley@btinternet.com
- ☼ Gilfach, Rowen, Conwy LL32 8TS
James & Isoline Greenhalgh
01492 650216, isolinegreenhalgh@btinternet.com
- ☼ Gwenfro Uchaf, Lôn Gwenfro, Talwrn, Llangefni LL77 8JD
Karen Hillyer
gwenfrouchaf@yahoo.com
- ☼ Llwyn Onn, Penmon LL58 8SG
Paul Richardson & Pauline Williams
07917 060324, paulinemwilliams@btinternet.com
- ☼ Llys-y-Gwynt, Pentir Road, Llandygai, Bangor LL57 4BG
Jennifer Rickards
07799 893418, mjrickards@gmail.com
- ☼ Mynydd, Cors Goch, Llanbedrgoch LL76 8TZ
Wyn & Ann Williams
01248 853269, gardenannwyn@gmail.com
- ☼ The Old School, Penmon LL58 8RU
Kay Laurie
07971 083361, kay.laurie@ngs.org.uk
- ☼ Plasglasgwm, Penmachno, Betws y Coed LL24 0PU
Peter & Tamsyn Gallimore
01690 760181, office@plasglasgwm.co.uk
- ☼ Sunningdale, Bull Bay LL68 9SD
Mike & Gill Cross
01407 830753, mikeatbb@aol.com
- ☼ Trefnant Bach, Anglesey Bees, Llanddaniel Fab LL60 6ET
Dafydd & Dawn Jones
07816 188573, dafydd@angleseybees.co.uk
- ☼ Tŷ Cadfan Sant, National Street, Tywyn LL36 9DD
Katie Pearce
07816 604851, katie@tycadfansant.co.uk
- ☼ Tyn y Pant, Boduan, Pwllheli LL53 6DT
Elizabeth Broadbent
07925 888356, royandlizbroadbent@hotmail.co.uk

The weather is a hot topic after last year's heatwave and trying to keep everything in peak condition for the Big Day, including the surprisingly much-talked-about Meringues at Cefn Farm!... and this year's very mixed offerings so far.

My shopping list for cakes appears to get larger every year, but then everyone likes cakes! I've calculated that, if I make two of everything, I will need 69 eggs, 10¼ lbs of sugar, not to

mention a butter mountain and an industrial cake mixer, or perhaps a cement mixer!



Refreshments will be served throughout the day:

- Tea and cake at Cefn Farm, and
- Light refreshments/savouries at Neuadd Bentref Llanddona Village Hall (yr Hen Ysgol) and yr Owain Glyndŵr.

All gardens are accessible on foot, especially if you want to walk off the refreshments and cake, or you may travel in style courtesy of the Seiriol Alliance Bus Service.

There may also be the return of Derek the Dalek, some firemen may make an appearance, and there may be vintage tractors and farming implements and possibly a Brass Band to look out for as well. Please note that the presence of these attractions will not be known for certain until towards The Day, owing to possible commitments elsewhere. Regardless, there will be plenty to see, and all will be welcome for a Grand Day Out in Llanddona.



Llansadwrn: Clwb Sadwrn a Sadyrnau Agored

Gwylan Williams & Joan Woods

Neuadd yr Eglwys Sant Sadwrn: Clwb Sadwrn a Sadyrnau Agored

Clwb Sadwrn: 'rydym yn ailgychwyn ein sesiynau misol o gyfarfodydd yn Neuadd yr Eglwys! Cyfle i gyfarfod ffrindiau hen a newydd ac chyfle hefyd, ar Sadyrnau Agored, i ymweld ag Eglwys hanesyddol Sant Sadwrn.



Tu mewn Neuadd Eglwys Sant Sadwrn
St Sadwrn Church Hall interior
(Gwylan Williams)

Mae'r safle hynafol a phrydferth yma gyda golygfâ hyfryd tuag at fynyddoedd Eryri yn le braf i gnoi cil a darganfod. Mwynhau diwylliant a lluniaeth o fewn tafliaid carreg i'w gilydd.

Cynhelir Clwb Sadwrn yn Neuadd yr Eglwys rhwng 10.00yb a 12.00 hanner dydd ar y Sadyrnau canlynol:

- 16 Mai
- 20 Mehefin
- 18 Gorffennaf
- 15 Awst

Cadwch olwg ar hysbysfyrdau'r Eglwys a phentref Llansadwrn am fanylion digwyddiadau pellach.

Archebion: Mae'r Neuadd ei hun ar gael i'w llogi am brisiau rhesymol iawn. Fel y gwelwch o'r darlun, mae ynddo un ystafell fawr, yn mesur tua 40' wrth 20' (12.2m wrth 6.1m). Mae hefyd cegin fechan a thoiled.

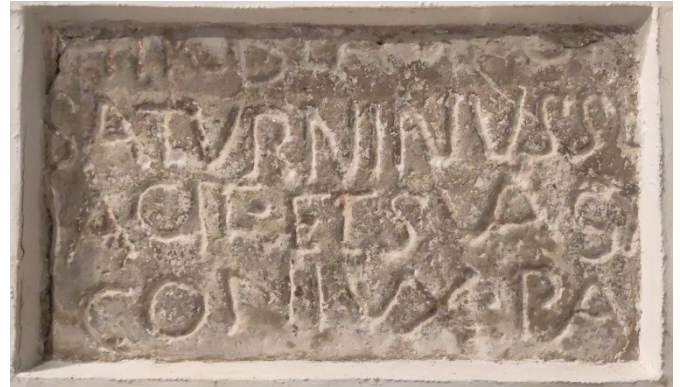
Mae'r Neuadd yn hwylus iawn ar gyfer cyfarfodydd, dosbarthiadau, gweithgareddau cymdeithasol a chodi arian, ac yn y blaen. Mae lle i barcio tua 12 car a gallwn drefnu mwy o le parcio cyfagos trwy drefniant ymlaenllaw.

I archebu, ewch i:

Neuaddau
<https://www.brotysilio.church/neuaddau/>

Eglwys Sant Sadwrn

Sefydlodd Sant Sadwrn Eglwys Sant Sadwrn tua 500OC. Darganfuwyd y garreg yn y fynwent cyn 1742.



Carreg Sant Sadwrn
The St Sadwrn stone
(parth cyhoeddus/public domain)

Credir mai hon yw'r garreg goffa hynaf yng Nghymru. Mae'r arysgrif Ladin yn cyfieithu fel 'Yma y gorwedd y bendigedig Saturnius a'i wraig sanctaidd. Tangnefedd i'r ddau ohonoch.' Dyddiad y garreg yw 520OC.

Mae croeso mawr i bawb ymuno gyda'r gynulleidfa yn Eglwys Sant Sadwrn ar yr ail a'r pedwerydd Sul bob mis am 9.30yb ar gyfer ein gwasnaethau dwyieithog.

Ymunwch gyda ni wedyn am luniaeth ysgafn yn y Neuadd.

Am ragor o wybodaeth am wasanaethau Eglwysi Bro Tysilio, yn cynnwys Sant Sadwrn, wele gwefan:

Addoliad ym Mro Tysilio
www.brotysilio.church/addoliad/

St Sadwrn's Church, Llansadwrn
https://en.wikipedia.org/wiki/St_Sadwrn%27s_Church,_Llansadwrn

St Sadwrn's Church, Llansadwrn
<http://www.allabouthistory.co.uk/History/Wales/Place/St-Sadwrns-Church-Llansadwrn.html?Z1YTd3hA>



Llansadwrn: Clwb Sadwrn and Open Saturdays

Gwylan Williams & Joan Woods

St Sadwrn's Church Hall: Clwb Sadwrn and Open Saturdays

Clwb Sadwrn: Clwb Sadwrn – an informal coffee and chat session held in the Church Hall once a month – is reopening! It's a place to meet up with old friends and an opportunity to form new friendships, while also providing an opportunity to explore St Sadwrn's historic church on Open Saturdays.

This ancient and beautiful setting overlooking the mountains offers a time of reflection and discovery. Enjoy culture and refreshments within a stone's throw of each other.

Clwb Sadwrn is held in the Church Room from 10.00am to 12.00 noon on the following Saturdays:

16 May
20 June
18 July
15 August

Please check the Church and village notice boards for details of other future events.

Bookings: the Hall itself is available for hire at very reasonable rates. As you see from the photograph, it has one large space, measuring approximately 40' by 20' (12.2m by 6.1m). There is also a small kitchen area and toilet.

The Hall is ideal for meetings, classes, social and fundraising events etc. There is parking for about twelve cars and we can arrange for overflow parking at the adjacent farmyard by prior arrangement.

To book, visit

☒ Neuaddau

<https://www.brotysilio.church/neuaddau/>

St. Sadwrn's Church

St Sadwrn founded the Church of St Sadwrn in c.500AD. The stone was discovered in the graveyard before 1742.

It is reputed to be the oldest memorial stone in Wales. The Latin inscription translates as 'Here lies the blessed Saturnius and his saintly wife. Peace be with you both'. The date of the stone is 520AD.



Tu mewn Eglwys Sant Sadwrn
St Sadwrn Church interior
(Gwylan Williams)

All are welcome to join the congregation at St Sadwrn's on the second and fourth Sundays of each month at 9.30am for our bilingual services.

Join us afterwards for light refreshments in the Church Hall.

For more details about services at Bro Tysilio Churches, including St Sadwrn's, visit:

☒ Worship in Bro Tysilio

www.brotysilio.church/addoliad/

☒ St Sadwrn's Church, Llansadwrn

https://en.wikipedia.org/wiki/St_Sadwrn%27s_Church,_Llansadwrn

☒ St Sadwrn's Church, Llansadwrn

<http://www.allabouthistory.co.uk/History/Wales/Place/St-Sadwrns-Church-Llansadwrn.html?Z1YTd3hA>

Digwyddiadau yn Llandegfan 🇬🇧

Siân Arwel Davies, Cydlynnydd, Merched y Wawr

Merched y Wawr

Dyma ni ar drothwy croesawu Eisteddfod Genedlaethol yr puffinpages@gmail.com

Urdd 2026 i Ynys Môn. Mae aelodau canghenau Merched y Wawr Rhanbarth Môn wedi bod yn brysur yn creu torchau ar gyfer arddangosfa yn pabell MyW. Dewch draw i'w gweld!

Eisteddfod Bro Llandegfan

Mae Rhestr Testunau Eisteddfod Bro Llandegfan ar gael mewn siopau lleol ac ar wefan Cymdeithas Eisteddfodau Cymru. Mae manylion y gystadleuaeth newydd isod.

**EISTEDDFOD
BRO LLANDEGFAN**

**DYDD SADWRN
4 GORFFENNAF 2026**

**CYSTDLEUAETH AR GYFER SIARADWYR
NEWYDD/DYSGWYR**

PERFFORMIO DARN LLAFAR
(RHYDDIAITH NEU FARDDONIAETH)
NEU GANU UNAWD
GWOBR: CWPAN (I'W CHADW AM FLWYDDYN)
A £20; £15; £10.

GWAITH CARTREF:

AGORED: YSGRIFENNU AR UNRHYW
FFURF - LLYTHYR, ATGOF, STORI,
DYDDIADUR, ERTHYGL NEU GERDD
TESTUN: LLWYBR/LLWYBRAU
GWOBR: £10.

DYDDIAD CAU: 23 MAI, 2026

ANFONWCH Y GWAITH AR E-BOST
I HELEN DAVIES

✉ HELENCAEFFYNNON@YAHOO.CO.UK

Neuadd y Plwyf

Mae Neuadd y Plwyf yn brysur hefyd gyda dosbarthiadau ar ddydd Llun, Mawrth a Iau. Ar y trydydd bawn Mercher, bydd Merched y Wawr yn cyfarfod a fis Mawrth, daeth Côr Ysgol Llandegfan dan arweiniad Miss Greta Stuart atom i ddathlu Gŵyl Dewi.

Trip blynyddol

Fis Mai byddwn yn mynd ar ein trip blynyddol. Rydym yn hynod falch o'n Siaradwyr Newydd ac mae croeso i unrhyw un ymuno â ni pan fyddwn yn ailgychwyn fis Medi.

Criw Bore Iau

Rydym yn cyfarfod yn rheolaidd ar ddydd Iau am sgwrs a phaned.



Events in Llandegfan

Siân Arwel Davies, Co-ordinator, Merched y Wawr

Merched y Wawr

Here we are on the threshold of welcoming the Urdd Eisteddfod 2026 to Ynys Môn. The members of Merched y Wawr have been busy creating a wreath for the exhibition being held in the MyW marquee. Come along to see us!

Eisteddfod Bro Llandegfan

The List of competitions for the Eisteddfod Bro Llandegfan is available at local shops and on the Society of Eisteddfodau Cymru website. The details of the new competition are above.

Parish Hall

The Parish Hall is busy with classes on Monday, Tuesday and Thursdays. Merched y Wawr meet on the third Wednesday afternoon and in March Ysgol Llandegfan Choir conducted by Miss Greta Stuart came to celebrate Saints David's Day with us.



Côr Ysgol Llandegfan yn dathlu Dydd Gŵyl Dewi Sant
Ysgol Llandegfan Choir celebrating Saints David's Day
(via Siân Arwel Davies)

Annual trip

In May we will be going on our annual trip. We are very proud of the New Speakers who have joined us and welcome any others to come along when we restart our activities in September.

Criw Bore Iau

We meet regularly on Thursdays for a chat and paned.



Colofn Puffin Pie Lucy Low: bwyta'n chwantus neu beidio... 🍷

Lucy Low

Roeddwn i bob amser o dan yr argraff bod y gair 'scoff' yn deillio o gyfenw'r cogydd byd-enwog Auguste Escoffier. Mor anghywir oeddwn i!

Auguste Escoffier oedd cogydd Ffrengig o'r radd flaenaf, perchennog bwyta'i ac awdur coginio. Gosododd Escoffier safonau newydd ym myd 'haute cuisine' yn Ffrainc yn y 19^{eg} ganrif, gan ddefnyddio dim ond y cynhwysion naturiol gorau a chydbwysio blasau cain i greu llawer o'r sawsiau rydyn ni'n eu hadnabod heddiw. Roedd yn adnabyddus am ddisgyblaeth a hylendid yng ngheginau Ffrainc, gan osod y safonau ar gyfer ceginau modern heddiw. Mae ei brydau llofnod yn cynnwys *Filets de sole Coquelin* a'r enwog *Peach Melba*. Yn rhyfedd ddigon, fodd bynnag, mae ei gyfenw Escoffier yn cyfieithu'n uniongyrchol i 'ladd'! Ddim yn ddelfrydol iawn i gogydd enwog...

Mae hyn yn fy arwain at y gair 'scoff', sy'n golygu bwyta'n gyflym ac yn chwantus—llowcio neu flewyn-blu'r bwyd i lawr mewn modd swllyd. Mae'r gair hefyd yn dyddio o'r 19^{eg} ganrif, lle tybiwyd ei fod yn dod o'r gair Iseldireg/Affricaneg am 'bryd o fwyd' (amrywiad o *scaff*, 'food'; yn gysylltiedig â'r gair Iseldireg/Affricaneg *schoff*, sy'n golygu chwarter o'r dydd, neu un o'r pedwar pryd dyddiol).

Wrth i ni symud ymlaen o fwyta er cysur drwy fisoedd hir y gaeaf (gweler fy ngholofn yn **The Puffin** 55, Chwefror 2026, tudalen 37 am stiwl cynhesol), rydyn ni'n edrych ymlaen at ddyddiau mwy disglair yr haf, yn berffaith ar gyfer difyrro gwsteion a gweini winwns coch wedi'u piclo gan Madeline Gray fel cyfeiliant perffaith i, dyweder, farbeciw. Ar ôl hynny gallm sipian ambell wydraid o Prosecco (Prosecco?) gyda rysâit hyfryd o flasus gan Caroline Egan ar gyfer tiramisù mafon a lemwn. A oeddech chi'n gwybod bod Prosecco hefyd yn enw Eidaleg pentref o'r enw Prošek yn Croatia?

PS: Os oes gan unrhyw un syniadau am ddiodydd i'w gweini fel cyfeiliant, neu efallai hyd yn oed coctel neu ddau, byddwn i'n falch iawn o wneud ychydig o brofi blas!

Mwynhau! Enjoy!

📖 Auguste Escoffier biography
<https://disciplesescoffier.org/en/about-us/biography-of-auguste-escoffier/>

📖 Scoff
www.collinsdictionary.com/dictionary/english/scoff

📖 What is the plural of Barolo? Brunello? Barbaresco? Prosecco? @FineWineGeek
<https://dobianchi.com/2014/03/19/plural-brunelli-barbareschi-prosecchi/>

Puffin pie: cyn symud ymlaen at y ryseitiau, penderfynodd eich cysodwr wneud chwiliad cyflym ar-lein am *puffin pie*... a dyma beth a ddaeth o hyd iddo:

📖 Puffin Pie
www.rogermorgangrenville.com/post/puffin-pie

📖 The Nordic Cook Book (2015)
Magnus Nilsson
ISBN 978 0 71486 872 1
Phaidon
www.phaidon.com/en-gb/products/the-nordic-cookbook

Erbyn yr adeg hon y flwyddyn nesaf mae'n bosibl iawn y bydd **The Puffin** yn rhedeg hysbysebion ar gyfer corsedau; a oes unrhyw un yn cofio'r hysbysebion teledu hynod gorny Playtex *my girdle's killing me!* o flynyddoedd maith yn ôl? Edrychwch ar y ddolen isod; mae darllenwyr sydd, fel y dywedwn ni, o oedran penodol yn sicr o gofio rhai o'r hysbysebion sy'n cael eu crybwyll.

📖 UK television adverts 1955-1990: Clothes, shoes, jewellery & watches
www.headington.org.uk/adverts/clothes_shoes.htm

Dyna ddigon o ysgafnder: nawr at y ryseitiau...

Winwns coch wedi'u piclo gan Madeline Gray

Cynhwysion:

- 300ml finegr seidr
- 3 llwy fwrdd o siwgr caster euraidd
- 1 llwy fwrdd o naddion halen môr
- 6 grawn pupur du
- 6 had coriander
- 1 seren anis
- 1 ddeilen llawryf
- 3 winwns coch bach, wedi'u sleisio'n gylchoedd

Yn dibynnu ar faint y winwns, efallai y bydd angen cynyddu'r swm o'r finegr, ac ati, yn gymesur i'w gorchuddio'n llwyr.

Cyfarwyddiadau:

- Arllwyswch y finegr i mewn i badell, ac ychwanegwch y siwgr, yr halen, y sbeisys a'r ddeilen llawryf.
- Dewch â'r gymysgedd i ferwi ysgafn a'i droi o bryd i'w gilydd.
- Gwnewch yn siŵr bod y siwgr a'r halen wedi toddi ar ôl tua munud.
- Tynnwch oddi ar y gwres.
- Berwch degell o ddŵr.
- Rhowch y sleisys winwns mewn colandr.
- Arllwyswch y dŵr poeth dros y winwns a'u draenio'n dda.
- Pan fyddant yn ddigon oer i'w trin, paciwch y cylchoedd winwns i mewn i jar 500g wedi'i sterileiddio (*le Parfait* neu debyg).
- Arllwyswch y finegr cynnes dros y winwns a seliwch y jar.
- Oerwch a gadewch iddynt biclo am 2 awr.

Bydd y picls hyn yn cadw am 6 mis os ydynt heb eu hagar,

neu am 2 wythnos yn yr oergell ar ôl eu hagog. Maent yn eithaf mwys, serch hynny, felly mae'n annhebygol y byddant yn para'n ddigon hir i chi orfod poeni am hynny!

Amrywiad: gallwch amrywio'r rysait drwy ddefnyddio cyfuniad o winwns wedi'u sleisio a chiwymbr wedi'i sleisio.

Tiramisu mafon a lemwn gan Caroline Egan

Cynhwysion:

Nid oes unrhyw wyau amrwd yn y rysait hon.

125ml hufen chwipio
250g Mascarpone
100g ceuled lemwn: **defnyddiwch frand da**
1 llwy fwrdd o siwgr caster
1 pecyn bysedd menyw (*savoirdi*, bysedd sbwng, neu sbwng trifle)
50g o fafon wedi'u rhewi, wedi dadrewi
250ml o ddŵr, neu ½ dŵr/½ limoncello os yw'n well gennych
25g o fafon ffres
1 bar o siocled gwyn

Cyfarwyddiadau:

- Mewn powlen, cymysgwch yr hufen chwipio, y Mascarpone, y ceuled lemwn a'r siwgr caster am 3-5 munud nes ei fod yn hufennog, yn gadarn ac yn llyfn.
- Stwnsiwch y mafon wedi'u rhewi mewn powlen fach ac ychwanegwch y dŵr (neu'r dŵr a'r limoncello).
- Trochwch y bysedd sbwng yn y gymysgedd mafon; trefnwch nhw ar waelod dysgl hirsgwar (defnyddiwch hanner yn unig ar hyn o bryd).
- Taenwch ychydig llai na hanner y gymysgedd Mascarpone dros y bysedd sbwng.
- Gwasgarwch fafon ffres ar y top; mae'n helpu os ydych yn eu gwastatáu ychydig cyn eu rhoi ar y cymysgedd Mascarpone.
- Ar y cam hwn, gallech arllwys ychydig o geuled lemwn dros y mafon os oes rhywfaint ar ôl gennych.
- Taenwch fwy o'r cymysgedd Mascarpone dros y mafon; trochwch y bysedd sbwng sy'n weddill a'u gosod ar ben yr haen Mascarpone.
- Taenwch weddill y cymysgedd Mascarpone dros y bysedd sbwng.
- Gwasgarwch unrhyw fafon sy'n weddill dros y top.
- Gratiwch siocled gwyn dros y top.
- Rhowch yn yr oergell am o leiaf awr.



Lucy Low's Puffin Pie column: to scoff or not to scoff...

Lucy Low

I was always under the impression that the word 'scoff' was derived from the world-renowned Auguste Escoffier's surname. How wrong I was!

Auguste Escoffier was a French chef *par excellence*, restaurateur and culinary writer. Escoffier set new standards in the world of haute cuisine in France in the 19th century, using only the best natural ingredients and balancing delicate flavours to form many of the sauces we know today. He was known for discipline and hygiene in the kitchens of France, setting the standards for modern-day kitchens. His signature dishes include *Filets de sole Coquelin* and the famous *Peche Melba*. Strangely, though, his surname Escoffier translates directly into 'to kill!!' Not ideal for a famous chef...

This leads me onto the word 'scoff', meaning to eat quickly, greedily, gobble, wolf down our food in a noisy fashion. The word is 19th century as well, where it was presumed to be the Dutch/Afrikaans word for 'a meal' (variant of scaff, food; related to Afrikaans, Dutch schoft quarter of the day, one of the four daily meals).

As we move from comfort-eating our way through the long puffinpages@gmail.com

winter months (see my column in **The Puffin** 55, February 2026, page 37 for a warming stew), we look forward to the brighter summer days, just perfect for entertaining and serving Madeline Gray's pickled red onions as a perfect accompaniment to, say, a BBQ, after which we could quaff a few Prosecco (Proseccchi?) with Caroline Egan's delightfully delicious recipe for a raspberry and lemon tiramisu. Did you know that Prosecco is also the Italian name of a village, Prošek, in Croatia?

PS: If anyone wants to send in ideas for beverages as accompaniments, or maybe even a cocktail or two, I'd be delighted to do some taste-testing!

Enjoy! Mwynhau!

📖 Auguste Escoffier biography
<https://disciplesescoffier.org/en/about-us/biography-of-auguste-escoffier/>

📖 Scoff
www.collinsdictionary.com/dictionary/english/scoff

📖 What is the plural of Barolo? Brunello? Barbaresco? Prosecco? @FineWineGeek
<https://dobianchi.com/2014/03/19/plural-brunelli-barbaresco-proseccchi/>

Puffin pie: before going on to the recipes your typesetter decided to do a quick search on-line for puffin pie... and this is what he found:

📖 Puffin Pie
www.rogermorgangrenville.com/post/puffin-pie

📖 The Nordic Cook Book (2015)
Magnus Nilsson
ISBN 978 0 71486 872 1
Phaidon
www.phaidon.com/en-gb/products/the-nordic-cookbook

This time next year **The Puffin** might well be running adverts for corsetry; does anybody remember the wonderfully corny Playtex *my girdle's killing me* TV adverts of many years ago? Have a look at the link below; readers who are, we shall say, of a certain age are bound to remember some of the adverts that are mentioned.

📖 UK television adverts 1955-1990: Clothes, shoes, jewellery & watches
www.headington.org.uk/adverts/clothes_shoes.htm

That's enough frivolity: now for the recipes...

Madeline Gray's pickled red onions

Ingredients:

300ml cider vinegar
3tbsp golden caster sugar
1tbsp sea salt flakes
6 black peppercorns
6 coriander seeds
1 star anise
1 bay leaf
3 small red onions, sliced into rings



Depending on the size of the onions you might need to incr-

ease the quantity of vinegar, etc., in proportion to cover them completely.

Instructions:

- Pour the vinegar into a pan, add the sugar, salt, spices and bay leaf.
- Bring to a simmer and stir occasionally.
- Make sure that the sugar and salt have dissolved... after a minute or so.
- Remove from the heat.
- Boil a kettle of water.
- Put the onion slices in a colander.
- Pour the hot water over the onion slices and drain well.
- When cool enough to handle, pack the onion rings into a 500g sterilised jar (*le Parfait* or similar).
- Pour the warm vinegar over the onions and seal the jar.
- Chill and allow to pickle for 2 hours.

These pickles will keep for 6 months unopened, or for 2 weeks in the fridge once opened. They're rather moreish, though, so they're unlikely to be there long enough for you to need to worry about it.

Variation: you can vary the recipe by using a combination of sliced onion and sliced cucumber.

Caroline Egan's raspberry and lemon tiramisu

Ingredients:

There are no raw eggs in this recipe.

- 125ml whipping cream
- 250g Mascarpone
- 100g lemon curd: use a good brand
- 1 tablespoon caster sugar
- 1 pack ladyfingers (*savoirdi*, sponge fingers, trifle sponges)
- 50g frozen raspberries, thawed
- 250ml water, or ½ water/½ limoncello if preferred
- 25g fresh raspberries
- 1 bar white chocolate

Note: you can use frozen raspberries but they won't look as good as fresh ones for the decorations on top.

Instructions:

- In a bowl, mix the whipping cream, mascarpone, lemon curd and caster sugar for 3-5 minutes until it's creamy, firm and smooth.
- Mash the frozen raspberries in a small bowl and add the water (or water and limoncello).
- Dip the sponge fingers in the raspberry mixture; arrange them in the bottom of a rectangular dish (use only half of the sponge fingers at this stage)
- Spread just under half of the Mascarpone mixture over the sponge fingers.
- Scatter fresh raspberries over the top; it helps if you flatten the raspberries before laying them on the Mascarpone mix.
- At this stage you could drizzle lemon curd over the raspberries if you have any left over.
- Spread more of the Mascarpone mix over the raspberries; dip the remaining sponge fingers and place on top of the mascarpone layer.
- Spread the remaining Mascarpone mix over the sponge fingers.
- Scatter the top with any remaining raspberries.
- Grate white chocolate over the top.
- Refrigerate for at least one hour.

Nature notes: No time to stand and stare?

Roz Hattey

These well-known lines by W H Davies:

*What is this life if, full of care
We have no time to stand and stare.*

have come to my mind very often over the last few months. Recovering well from a hip replacement, I've needed to try and catch up with all the chores and essential tasks I'd had to postpone. The only standing and staring some days has been to look around house and garden in dismay: piles of unsorted papers and flowerbeds full of weeds about to overwhelm more treasured plants! Good intentions of extending daily walks and arranging trips out with binoculars to favourite haunts a bit further afield haven't made much headway yet. Daily busyness and our fluctuating weather have kept me indoors too much.

Needing to find some sort of inspiration outdoors, I wrapped myself up in mid-January and admired some frosted leaves amongst very early-flowering primroses and gazed at the thick growth of mosses and lichens on the damson tree branches, these a sign of our clean, oceanic air.



Frosted leaves and very early-flowering primroses in mid-January; mosses and lichens on damson tree branches (Roz Hattey)



On 9 February the first frogspawn appeared in my pond and soon after the Palmate newts were back in the water from their winter quarters around the garden. In early March, there were 25 primrose plants in flower, self-seeded from just four original 'wild' primroses I bought and planted out some years ago. A friend's early *Prunus* blossom in Llanfaes was covered in honey bees very early this Spring.

A quick walk down to West End in Beaumaris on 8 March was very fruitful. The spit by the little estuary there was gradually disappearing as the tide came in. I paused to sit on a seat and I was just in time to see two shelduck, eight redshank and six Brent geese feeding there.

These smart little geese, about the size of a Mallard, have

black heads, necks and breasts but they are the light-bellied race which are returning to Arctic Canada and Greenland to breed. Brent geese breed further north than any other goose. They overwinter mainly around the coasts and estuaries of Ireland, feeding mostly on eel-grass, seaweed and saltmarsh plants. They sometimes feed on farmland too. Nearly half the world population of Brent geese overwinters around the coasts of Ireland and the east and south coasts of England.



Early March, wild primroses in flower
(Roz Hattey)



Shelduck, redshank and Brent geese feeding on the shore at West End, Beaumaris
(Roz Hattey)

On short walks I glance at the developing catkins on hazel bushes and on hornbeam trees in a local garden. Sticky buds on the horse-chestnuts have been gradually opening with pale pink leaf-sheaths revealing the developing clusters of palmate leaves.



Brilliant gold kingcups freshly open by a stream
(Roz Hattey)

When the Spring Equinox on 20 March brought one of those few glorious warm and sunny days, I made a quick picnic and drove along the Conwy Valley to Bodnant Garden. I needed time to stand and stare at the wonderful Magnolia blossom and the expanses of golden daffodils between the trees in The

puffinpages@gmail.com

Glades. Here, with careful management, the daffodils will be followed by 'pastoral drifts' of bluebells and other wild flowers. Brilliant gold kingcups were beginning to open by the streams, as they are now too by my pond. I looked for the dippers in the river down by the Old Mill, where I had watched them bobbing and diving in earlier years, but I had no time on this visit to wait until they appeared.

As I sat on a seat to have my picnic it was lovely to watch a tiny toddler being introduced to the wonders of nature by her grand-parents, following the National Trust trail for young children. Hopefully she will remember to make time to stand and stare throughout her life.

Now, at the end of March, Spring has just about arrived and Easter is almost here again. I will soon make better progress at home! A long-handled fork and a hoe are getting me started in the garden, encouraged by the welcome return of birdsong across the gardens: blackbirds, wrens, dunnocks, sparrows, chaffinches, blue-tits, great-tits, wood-pigeons and a thrush. The robins come to sit on a nearby branch, of course, ready to claim the first worms. No blackcaps yet this year.



A dunnock, a small, unobtrusive bird found throughout the UK
(<https://bird-watching.co.uk/dunnock-a-common-garden-bird-in-the-uk/>)

I'm fascinated again by the strange courtship behaviour of a pair of dunnocks. Solitary and mouse-like for most of the year, these little brown-flecked birds, with blue-grey heads and breasts, suddenly become very active and brave. This pair chase each other round the bushes, sit boldly on the garden-seat, then land on the path flicking their wings open and waving them over their backs, with shrill calls. Pairing is unusual. Two males will often mate with one female and the less dominant male helps feed the young. Sometimes several males share several females. I'm pleased to see this pair of dunnocks flying up into the ivy and Forsythia hedge right by my window, obviously with a possible nest-site in mind.

Making time to listen to the radio when indoors with the chores can be rewarding too. *Farming Today* on Radio 4 interviewed a couple of farmers who are still managing some of their pastures and field margins in The Golden Triangle region of Herefordshire in a traditional way to maintain the truly wild daffodils. These were once seen growing over large areas but most succumbed to more intensive agriculture during and after the Second World War. What a sight they must have been!

Radio 4's 2 April edition of *Open Country* saw Martha Kearney in Cambridgeshire at the annual Thriplow Daffodil Festival. We learnt that there are 52 species of wild *Narcissus*, just one of which is native to the UK, *Narcissus pseudonarcissus*. The others are native to Spain and Portugal.

Recently Radio 3 reported that a litter-picker in Essex had retrieved a helium balloon from a tree where it had been caught up and found, to his amazement, a hibernating dormouse inside the balloon! No clues how it had arrived there, but it was duly taken to a suitable woodland, still asleep, to continue its hibernation!

W. H. Davies: Leisure
<https://englishverse.com/poems/leisure>

The Governor's Quick Crossword 24: solution



Fianchetto 66's Chess 15: solution

1 Qf5 h5 2. Qh5#.

In plain language, the white queen moves one space up leaving the only legal option for black, a pawn move one space down. The white queen then moves two spaces to the right, putting the black king neatly in checkmate.

Rali Tractor Llanddona 2026

Lucy Low

Mae e yma eto! Bydd 6^{ed} Rali Tractor Llanddona yn cael ei chynnal ddydd Sadwrn 15 Awst, felly dewch i ymuno â ni, gyda'ch tractor neu fel gwylwr: mae ffi mynediad o £15 i dractorau, ac mae croeso i bawb!

Bydd y tractorau'n ymgynnull yn yr Owain Glyndŵr am 10.00yb. Bydd brechdan bacwn a diod am ddim ar gael i yrwy y tractorau gan yr Owain Glyndŵr, a fydd ar agor drwy'r dydd yn gweini diodydd a byrbrydau ysgafn. Chwiliwch am y tractorau wrth iddynt adael am 11.00yb, ac arhoswch i fwynhau'r stondinau, gan gynnwys standin gacennau. Dylem gael cwmni Brigâd Dân Biwmares eleni, a bydd rhywbeth at ddant pawb.

Y llwybr:

- Bydd manylion y llwybr a'r amseroedd yn dilyn, a byddwch yn gallu casglu taflen am ddim yn yr Owain Glyndŵr pan fydd wedi'i chwblhau
- Bydd copi yn **The Puffin** 57, Awst 2026
- Bydd copi y gellir ei argraffu ar gael gyda'r fersiwn ar-lein o **The Puffin** fel ei ddwy dudalen olaf:

www.seiriolalliance.co.uk/newsletters/

Dilynwch y tractorau o'r Owain Glyndŵr drwy Landdona i Landegfan, Llansadwrn, Porthaethwy, Biwmares, Llangoed, Penmon ac yna'n ôl i Landdona, gan fwynhau'r golygfeydd a'r tirweddau hyfryd ar hyd y daith, ac yna croesewch y tractorau'n ôl yn yr Owain Glyndŵr tua 3.30yp.

Bydd cerddoriaeth yn ystod y dydd, ac adloniant byw o 4.00yp ymlaen hyd yr hwyr, ynghyd â mochyn rhost hefyd. Mae'r digwyddiad yn cefnogi elusennau lleol bob blwyddyn, ac eleni bydd yr holl arian a godir yn mynd tuag at yr elusennau canlynol:

- LimBo: elusen gymorth hanfodol i blant â gwahaniaethau aelodau'r corff.

- Blaen y Coed: canolfan ddysgu i oedolion ag anawsterau dysgu wedi'i lleoli yn Llangoed.
- Tir Dewi: elusen sy'n cynnig cymorth i'r gymuned wledig, yn enwedig i'r gymuned fermio ac amaethyddol.
- Clwb Ffermwyr Ifanc Llangoed: wedi'i lleoli yn Llanddona ac yn cynrychioli'r ardal ym mhob agwedd ar fywyd gwledig; mae'r aelodau ifanc yn cynrychioli Ynys Môn ymhel-lach yn rheolaidd.
- Eglwys Sant Iestyn, Llanddona: mae'r Eglwys wedi cael adferiad rhannol ac yn codi arian i dalu costau cynnal a chadw cynyddol er mwyn aros ar agor i bawb; mae Eglwys Sant Iestyn a Sant Dona yn gweithredu polisi drws agored.
- Ysgol Gynradd Llangoed: mae angen cymorth ar yr ysgol i greu clwb garddio er budd y plant: dysgu, mwynhau a chwarae.
- Cartref Preswyl Haulfre i'r henoed: mae'r trigolion yn rhoi croeso cynnes i yrwy y tractorau bob blwyddyn.
- Gwasanaeth Bws Mini Cymunedol (Cynghair Seiriol): cynllun trafndiaeth lleol gwerthfawr Ward Seiriol.

Dewch i ddangos eich cefnogaeth i'n ffermwyr lleol, ein perfformwyr lleol a'n helusennau lleol!

Ni chaiff unrhyw gostau eu tynnu o'r arian a godir yn y digwyddiad cymunedol cyffrous hwn; mae mynediad am ddim drwy'r dydd a'r nos.

Am fwy o wybodaeth: cysylltwch ag un o'r Tîm os hoffech ragor o wybodaeth am ddigwyddiadau'r dydd, gan gynnwys nawdd ar gyfer costau marchnata, stondinau neu os ydych yn wirfoddolwr ac yn dymuno helpu:

Mark Williams (yr Owain Glyndŵr)
mwilliams21061974@gmail.com

Lucy Low
lucylow2013@gmail.com

Sioned Roberts
sionedann90@gmail.com



Llanddona Tractor Rally 2026

Lucy Low

It's here again! The 6th Llanddona Tractor rally will be taking place on Saturday 15 August, so come and join us, with your tractor or as a spectator: there's a £15 tractor entry fee, and everybody's welcome!

The tractors will gather at yr Owain Glyndŵr at 10.00am. A free bacon buttie and paned will be provided for the tractor drivers by yr Owain Glyndŵr, which will be open all day, serving drinks and light bites. Wave the tractors off at 11.00am, stay and enjoy the stalls, including a cake stall. We should be joined this year by the Beaumaris Fire Brigade, and there will be something for everyone.

The route:

- The route and times will follow and you'll be able to pick up a free leaflet at yr Owain Glyndŵr once it's been finalised.
- There'll be a copy in **The Puffin** 57, August 2026.
- A printable copy will be available with the on-line copy of **The Puffin** 57, as its last two pages.

www.seiriolalliance.co.uk/newsletters/

Follow the tractors from yr Owain Glyndŵr through Llanddona to Landegfan, Llansadwrn, Menai Bridge, Beaumaris, Llangoed, Penmon and then back to Llanddona, taking in the lovely scenery and views along the way, then welcome the tractors back at yr Owain Glyndŵr at about 3.30pm.

There will be music during the day, and live entertainment from 4.00pm well into the evening, with a hog roast as well.

The event supports local charities every year, and this year all the money raised is going towards these chosen charities:

- LimBo: a vital support charity for limb-different children.
- Blaen y Coed: a learning centre for adults with learning difficulties based in Llangoed.
- Tir Dewi: a charity offering support to the rural community, in particular to the farming and agriculture community.
- Clwb Ffermwyr Ifanc Llangoed/Llangoed Young Farmers Club: based in Llanddona and representing the area in all aspects of rural life, the young members regularly representing Ynys Môn further afield.
- St Iestyn's Church, Llanddona: the Church has had a partial restoration and is raising money to cover the ever-increasing maintenance costs involved in staying open for everyone; the Churches of St Iestyn and St Dona operate an open-door policy.
- Llangoed Primary School: the school needs help to create a gardening club for the benefit of the children: learning, enjoying, playing.
- Haulfre Residential Home for the elderly: the residents give a hearty welcome to the tractor drivers every year.
- The Community Minibus service (Cyngrhair Seiriol Alliance): the invaluable local Seiriol Ward transport scheme.

Please come and show your support for our local farmers, local acts and local charities!

o'r pentrefi ar y llwybr? Rhowch gynnig arno! Mae o'n rhad ac am ddim ac ar gael i bobl o bob oed. Os gwelwch chi'r bws mini ag angen lifft, codwch eich llaw ag, efallai, nawn ni stopio i'ch codi.

Cofiwch... Ddefnyddiwch o neu fe'i collwch o!

Gweler manylion y llwybr a'r amserlen ar dudalennau 38 a 39.

✉ Cyngrhair Seiriol Alliance
Canolfan Hamdden Beaumaris
Rating Row
Beaumaris
Anglesey
LL58 8AL

☎ 01248 811200

✉ ctdseiriolgts@gmail.com



Community minibus service: an update

Steve MacVicar

We are pleased to say that the community minibus service on Mondays and Fridays is able to continue as the result of more funding provided by Isle of Anglesey County Council.

Neuadd Bentref Llanddona

Mae angen **GWIRFODDOLWYR** arnon ni!
Mae angen **CHI!**

Ymunwch â ni fel **GWIRFODDOLWR!**

Rydym yn grŵp cyfeillgar, a byddwn yn eich croesawu'n gynnes, p'un a allwch roi diwrnod neu fwy yr wythnos neu dim ond awr neu ddwy o dro i dro

Cysylltwch â

Pat **07768 018370** • Miriam **07733 176004**
am fwy o wybodaeth neu
os hoffech ymuno â ni!



Llanddona Village Hall

We need **VOLUNTEERS!**
We need **YOU!**

Please join us as a **VOLUNTEER!**

We're a friendly group, and will welcome you with open arms, regardless of whether you can give a day or so a week or just an hour or two here and there

Please contact

Pat **07768 018370** • Miriam **07733 176004**
for more information or
if you'd like to join us!

No costs are taken out of the funds raised at this exciting community event; there's free entry throughout the day and evening.

More information: please contact one of the Team if you'd like more information on the day's events, including sponsorship for marketing costs, stalls or any volunteers wishing to help:

✉ Mark Williams (Owain Glyndŵr)
mwilliams21061974@gmail.com

✉ Lucy Low
lucylow2013@gmail.com

✉ Sioned Roberts
sionedann90@gmail.com

.....
Gwasanaeth bws mini cymunedol: diweddariad 🦃
Steve MacVicar

Rydym ni'n falch iawn o ddweud bod y gwasanaeth bws mini cymunedol ar ddydd Llun a dydd Gwener yn gallu parhau, diolch i ragor o gyllid gan Gyngor Sir Ynys Môn.

Mae'r bws mini yn gallu mynd â chi i ac o Landdona, Glanrafon, Llangoed, Penmarien, Penmon a Biwmares (Spar a Chae Mair).

Ydych chi wedi defnyddio'r gwasanaeth eto? Os ydych chi'n byw ym Biwmares, be am ei ddefnyddio i fynd i ymweld ag un puffinpages@gmail.com

The minibus can take you to and from Llanddona, Glanrafon, Llangoed, Penmarien, Penmon and Beaumaris (Spar and Caе Mair).

Have you used the service yet? If you live in Beaumaris, why not use us to visit one of the villages on the route. Give it a try. It's free and available to people of all ages. If you see the minibus and need a lift, give us a wave as we may be able to pick you up.

Remember... Use it or Lose it!

Please see route and timetable details on pages 38 and 39.

✉ Cyngrhair Seiriol Alliance
Canolfan Hamdden Beaumaris
Rating Row
Beaumaris
Anglesey
LL58 8AL

☎ 01248 811200

✉ ctdseiriolgts@gmail.com

.....
Penwythnos Gŵyl Rhedeg 'RunFest' Biwmares:

12/13 Medi 🦃

Steve MacVicar

Mi fydd Gŵyl Rhedeg 2026 eleni ar 12/13 Fedi. Os ydych am gofrestru ewch i'n gwefan, www.beaumarisrunfest.co.uk/, a

chliciwch ar y botwm *Online Entry* neu ewch i'r ddolen ganlynol <https://in.tdentries.co.uk/2026-beaumaris-runfest>.

Cynhelir rasys i blant y tu mewn i'r Castell ar y 12^{fed} a'r 10K a'r Hanner Marathon ar y 13^{eg}, hefyd yn dechrau ac yn gorffen yn y Castell.



Cael amser da!
Having a good time!
(Steve MacVicar)

Os ydych chi'n newydd i redeg neu'n rhedeg yn rheolaidd, byddwch yn sicr o gael croeso cynnes a diwrnod unigryw! Archebwch eich lle nawr.

Mae'r RunFest yn cael ei threfnu gan Rhedwyr Tref Beaumaris Town, Môn Actif a Chanolfan Hamdden Beaumaris. Bydd yr holl arian a godir o'r digwyddiad yn mynd tuag at achosion da lleol, gan gynnwys ein hysgolion a Chanolfan Beaumaris.

Rydym yn falch iawn bod Mat a Mel o Neptune Fish and Chips yn noddwyr pennaf i ni eto eleni.



Beaumaris RunFest Weekend: 12/13 September
Steve MacVicar

This year's RunFest 2026 is being held on the weekend of 12/13 September.

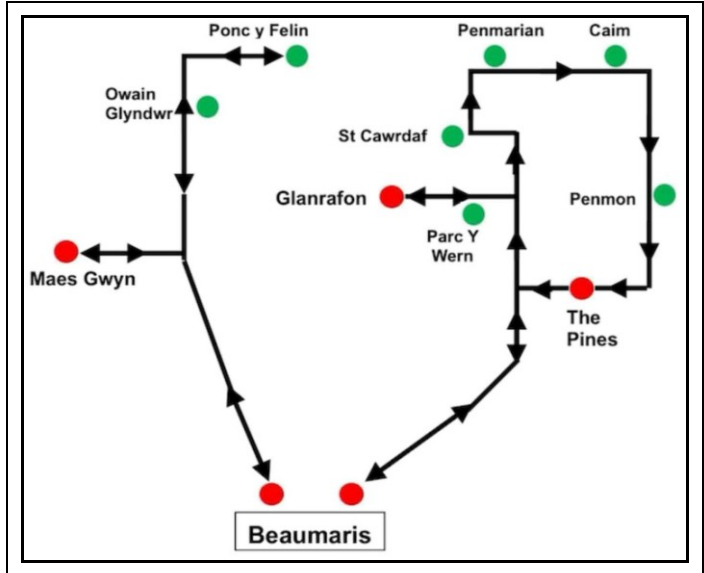
If you would like to enter please go to the RunFest website, www.beaumarisrunfest.co.uk/, and click on the *Online Entry* button or go to the following link: <https://in.tdentries.co.uk/2026-beaumaris-runfest>.



Ras 10K 2025
The 2025 10K race
(Phil Hen)

Children's races will be held inside the Castle on the 12th, and the 10K and Half Marathon will take place on the 13th, starting and finishing at the Castle as well.

Whether you are new to running or a regular, you'll be sure of



LLWYBR/ROUTE 1
Biwmares/Beaumaris-Llanddona-Biwmares/Beaumaris

Biwmares ● Beaumaris ●	1005	1130	1300	1450	
Llanddona: Ponc y Felin ● Owain Glyndwr ●	● safeloedd ar gais ● request stops				
Llanddona: Maes Gwyn ●	1026	1151	1321	1511	
Biwmares CYR ● Beaumaris ARR ●	1035	1200	1330	1520	

LLWYBR/ROUTE 2
Biwmares/Beaumaris-Glarafon-St Cawrdaf/Parc Terras-Penmon-Biwmares/Beaumaris

Biwmares ● Beaumaris ●	0920	1045	1210	1355	1530
Glanrafon ●	0935	1100	1225	1410	1545
Parc y Wern ● St Cawrdaf ● Penmarian ● Caim ● Penmon ●	● safeloedd ar gais ● request stops				
The Pines ● Penmon ●	0950	1115	1240	1425	1600
Biwmares CYR ● Beaumaris ARR ●	0958	1123	1248	1433	1608

a warm welcome and an unique day! Book your place now.

The RunFest is organised by the Beaumaris Town Road Runners, Môn Actif and Canolfan Hamdden Beaumaris. All money raised from the event will go towards local good causes, including our schools and Canolfan Beaumaris.

We're delighted that Mat and Mel of Neptune Fish and Chips are our main sponsors again this year.



A Night Out in Beaumaris

Ray Parsons

Five old friends all at loose ends,
With nothing to do after tea,
Said, "Let's take the old Morris down to Beaumaris,
Like we did when young, single and free."
Now because Ivor was an incompetent driver,
And didn't like to drive far,
Llanddona to Beaumaris? Hardly London to Paris?
So Fred said he'd drive the car.

AMSERLEN CAE MAIR	
GADAEL 1435 Spar	CYRRAEDD 1440 TOP Cae Mair
GADAEL 1440-1445 Cae Mair	CYRRAEDD 1448 Spar
GADAEL 1610 Spar	CYRRAEDD 1615 TOP Cae Mair
GADAEL 1615-1620 Cae Mair	CYRRAEDD 1623 Spar



CAE MAIR TIMETABLE	
DEPART 1435 Spar	ARRIVE 1440 TOP of Cae Mair
DEPART 1440-1445 Cae Mair	ARRIVE 1448 Spar
DEPART 1610 Spar	ARRIVE 1615 TOP of Cae Mair
DEPART 1615-1620 Cae Mair	ARRIVE 1623 Spar

When The Bulkeley got full they went to The Bull
 And with the whole night ahead
 It was once more Sanatogen spritzers for four
 And another lemonade for poor Fred.
 The drinks kept flowing increasingly showing
 They'd lost their retentive abilities
 So they left The Bull, somewhat less full
 After using their toilet facilities.

They'd had more their fill so went back up Red Hill
 Then Fred turned right at the top.
 But as one or two again needed the loo
 They decided on just one more stop.
 Fred had drunk enough of that fizzy stuff
 Sick of the taste and the sight
 So after one more in the Owain Glyndŵr
 Said, "We'd better call it a night."

They started to choke as the car filled with smoke
 And fearing it may well explode
 Went back to the pub, ordered some grub,
 Leaving the car in the road.
 Ivor was worried but they wouldn't be hurried
 Until they had finished their food.
 Fred said to Ivor, "Well, don't blame the driver"
 And Ivor said something quite rude.

At last they departed to get the car started
 With help from the local darts team.
 But it appeared not as bad as they'd feared,
 The smoke in fact was just steam.
 It was just getting light when said goodnight,
 Trying their best not to shout.
 Would they face uproars from her indoors?
 Would some of them be getting locked out?

Five old men swore no never no more,
 They'll be giving up drinking for good.
 Well maybe a small beer, to see in New Year,
 But only if their wives said they could.

Wellness: rapid diagnostic testing for bacterial infections

Andrew Perrott

Rapid testing for bacterial infections is being rolled out in community pharmacies and GP surgeries throughout Wales.

The two-year pilot project will provide near-immediate test results without the need to send samples to laboratories.

It is part of the Welsh Government's aim to make sure that more people can gain access to healthcare closer to local communities, and will help to target antibiotic prescribing, tackling the problem of resistance to antibiotics.

The project makes use of diagnostic equipment which was purchased originally during the COVID pandemic; this has been upgraded and repurposed to test for multiple bacterial infections in community settings.

The project is being supported by £734,000 of Welsh Government funding and £500,000 from the INEOS Oxford Institute for Antimicrobial Research. Oxford University will be providing an independent evaluation of the project.

The Point of Care Testing (POCT) in Primary Care pilot will focus initially on C-Reactive Protein (CRP) testing, which helps clinicians identify bacterial infections and make more informed decisions about antibiotic prescribing.

More than 300 community pharmacies and GP practices in all seven health board areas in Wales have expressed an interest in participating in the trial, which also supports the global fight against antimicrobial resistance, recognised by the World Health Organisation as one of the leading threats to public health.

The partnership with Oxford University will provide rigorous, independent evaluation of the trial's impact on antibiotic prescribing, patient outcomes, and cost-effectiveness. The research will also develop machine learning models to identify patients at risk of adverse outcomes.

■ Rapid diagnostic testing for bacterial infections to be rolled out in primary care
www.gov.wales/rapid-diagnostic-testing-bacterial-infections-be-rolled-out-primary-care

Wellness: smart glasses, an AI aid for people with dementia

Andrew Perrott

The Longitude Prize on Dementia has awarded the £1 million grand prize to CrossSense, a personalised AI-powered assistant, developed for smart glasses.

CrossSense identifies everyday objects and guides people living with early-stage dementia through daily activities, with the ultimate aim of supporting them to live safely in their own homes for longer.

How does it work?

By asking gentle prompts, CrossSense's AI companion – called Wispy – understands and learns a person's unique way of doing things, with the AI adapting to each user's needs as his/her dementia progresses.

The glasses capture the environment of the person who is living with dementia and the AI interprets that information to help the user to do the things that define independence, such as feeling confident in his/her home, taking good care of himself/herself, planning the day ahead, completing planned activities and hosting friends and family.



Snowdonia Physiotherapy

A new physiotherapy clinic in Beaumaris with Denry Aal, Chartered Physiotherapist



CANOLFAN LLES SEIRIOL WELLNESS CENTRE



- Muscle and Joint Pain
- Sprains and Strains
- Tendon Problems
- Arthritis
- Sports Injuries
- Work-Related Injuries
- Rehabilitation following Orthopaedic Surgery, Fractures and Joint Replacements

Get in touch to see how we can help:

07900 339605

Seiriol Wellness Centre,
Beaumaris Library, LL58 8AL



snowdoniaphysiotherapy.co.uk



The Chartered Society of Physiotherapy is the professional, educational and trade union body for the UK's 65,000 chartered physiotherapists, physiotherapy students and assistants

Denry Aal is registered with the Health & Care Professions Council (PH84906) and is a member of the Chartered Society of Physiotherapists.



CANOLFAN LLES SEIRIOL WELLNESS CENTRE



Acupuncture Vivien Shaw PhD Dip Ac MBAcC

Vivien is a professional acupuncturist with over 30 years' experience. She specialises in helping with pain relief and anxiety disorders.

Call or email to see if acupuncture could help you.

vivienshaw3@gmail.com

07971 536205

<https://seiriolwellnesscentre.co.uk/acupuncture>
<https://www.nhs.uk/conditions/acupuncture/>



THE ISLAND OSTEOPATH

Osteopathic care for adults, babies and children from your local family Osteopath

@ Seiriol Wellness Centre, Canolfan
Beaumaris & Beaumaris Library, LL58 8AL



- Back pain
- Joint pain
- Shoulder pain
- Sciatica
- Babies and children
- Sport injuries
- Fibromyalgia
- Neuralgia
- Tension



OSTEO YR YNYS

Book online at: www.theislandosteopath.com or
www.osteoyrnys.com Tel: 07986 340578



SCAN ME



PachaMama

HOLISTIC THERAPIES

Offering a variety of treatments tailored to each individual. Whether looking for a Holistic Massage or Reflexology for rejuvenation, Luxury Hot Stones Massage for deep relaxation or a Clinical Massage treatment plan for persistent pain such as generalised neck, shoulder, low back and knee pain, nerve impingements, headaches, frozen shoulder, tennis elbow, fibromyalgia and more, we have something to suit you.



Book a restorative treatment with Kate today

Visit www.pmtherapies.co.uk for more information

Find me at

OriginOsteo
15 Church Street
Beaumaris
Anglesey
LL58 8AB

CrossSense has been developed by a London-based social enterprise, CrossSense Ltd. The team trained the technology with dozens of everyday activities, including getting dressed, managing household chores safely, making a cup of tea and interacting with others.

The interactive, talkative and patient AI companion offers cognitive stimulation to get people thinking, talking and imagining, so that individuals continue to see the relationships between things (kitchen, mugs, spoons, teabags, water, kettle and milk are all connected to making a cup of tea, for example), which helps to maintain neural connections, slow cognitive decline in early-stage dementia and improve quality of life.

Working with the University of Sussex and a panel of people affected by dementia, the team observed improvements in some users' ability in naming objects, and other cognitive abilities in visual-spatial understanding, short-term and working memory, a component of memory that allows individuals to actively use information in the moment, such as following a conversation, solving a simple calculation, or remembering instructions.

£1m Longitude Prize awarded to AI smart glasses companion for people living with dementia
www.alzheimers.org.uk/news/2026-03-19/longitude-prize-awarded-ai-smart-glasses-companion

Dementia innovation
www.alzheimers.org.uk/what-we-do/dementia-innovation

AI software for smart glasses wins £1m prize for technology to help people with dementia
www.theguardian.com/society/2026/mar/18/ai-smart-glasses-1m-prize-technology-dementia

Dechreuodd gyda chês 🍷

Victoria Craig, Hwyllo Treftadaeth Afon Menai

Y llynedd, cynhaliodd Hwyllo Treftadaeth Afon Menai (HTAM) arddangosfa yn dathlu hanes morwrol lleol. Dechreuodd y cyfan gyda chês o hen ffotograffau gan Mr David Gallichan. Treuliodd David yn hael oriau gyda mi, yn rhannu'r straeon y tu ôl i bob delwedd. Mae wedi ymroi ei fywyd i hwyllo ar yr Afon; gellir dweud yn deg bod y môr yn rhedeg trwy ei wythiennau. Fel aelod hirsefydlog o HTAM ac yn berchennog ar *Ceris* (rhif ffylid 11), daeth ei wybodaeth a'i angerdd â'r gorffennol yn fyw iawn.

Diolch i chi, David Gallichan, am helpu HTAM i greu arddangosfa sy'n dathlu ein ffylid dreftadaeth, bywyd yr Afon, a'r gymuned o'i chwmpas.

Cafodd ein Harddangosfa ym mis Hydref y llynedd groeso cynnes ac adborth gwych. Un neges a safodd allan, fodd bynnag: roedd pobl eisiau mwy! Gan mai dim ond am un diwrnod y rhedodd yr Arddangosfa, gwnaethom addo y byddem yn dychwelyd, ac rydym wrth ein bodd yn cyhoeddi y byddwn yn ailagor ein Harddangosfa ar gyfer penwythnos llawn ar 18 Gorffennaf yng Nghanolfan David Hughes ym Miwmares.

Mae HTAM yn elusen gofrestredig treftadaeth a lles sydd wedi'i lleoli ym Mhwynt y Grocbren, Biwmares. Fe'i sefydlwyd yn 2021 ac enillodd statws sefydliad corfforedig elusennol (SCE) yn 2023. Wrth ei chalon mae ffylid ryfeddol o 17 o gy-chod hwyllo, y slwpiâu hardd *Menai Strait One Design* (MSOD), a adeiladwyd ym Miwmares o 1937 ymlaen, ac y credir mai hon yw'r ffylid gyflawn hynaf o'i math yn y byd. Mae'r elusen yn ymroddedig nid yn unig i gadw'r cychod hyn ar gyfer cenedlaethau'r dyfodol, ond hefyd i sicrhau bod eu hetifediaeth yn cael ei rhannu.

Darllenwch hanes byr o'r ffylid, *The Marks & Spencer boats...* yn *The Puffin* 45, Awst 2023, tudalen 3.


Drwy gyfleoedd hwyllo am ddim, yn enwedig i'r rhai na fyddent fel arall yn cael mynediad, mae'r elusen yn cefnogi iechyd a

puffinpages@gmail.com


lles ar draws y gymuned. Gan weithio gyda gwasanaethau lleol a mentrau rhagnodi cymdeithasol, mae'n cyrraedd unigolion, grwpiau a sefydliadau a all elwa fwyaf. Ar y cyd â hyn, mae'r sied gymunedol yn cynnig cyfleoedd i ddysgu sgiliau newydd, o gynnal a chadw cychod a'u cadwraeth i grefftwaith traddodiadol, gan ddod â phobl ynghyd a meithrin cymuned gref a chynhwysol.


Mae'r Arddangosfa yn rhan fach ond ystyrlon o'r genhadaeth ehangach hon: cadw hanes lleol tra'n ei wneud yn hygyrch ac yn berthnasol heddiw.

Wrth dynnu sylw at waith yr elusen a stori'r 17 o gy-chod MSOD, sut y cawsant eu hachub a'u dychwelyd adref i'r Afon, mae'r Arddangosfa hefyd yn archwilio hanes morwrol cyfoethog Afon Menai ei hun. Mae Afon Menai yn arbennig iawn oherwydd ei fod yn dod â chymysgedd eang o ddsbarthiadau hwyllo ynghyd, yn draddodiadol a modern, diolch i'w llanwau heriol a'i ddiwylliant hwyllo lleol cryf. Mae'r Arddangosfa hefyd yn adrodd hanes y nifer o wahanol ddsbarthiadau hwyllo sy'n rhannu'r dyfroedd, a'r sgil sydd ei angen i lywio'r darn godidog



ARDDANGOSFA FORWROL LEOL LOCAL MARITIME EXHIBITION





Canolfan Gymunedol David Hughes, Biwmares
18-20 Gorffennaf 2026, 10.00yb-4.00yp

David Hughes Community Centre, Beaumaris
18-20 July 2026, 10.00am-4.00pm

MYNEDIAD AM DDIM • FREE ENTRY

a heriol hwn o'r môr.

Bydd yr arddangosfa'n rhedeg o ddydd Sadwrn 18 i ddydd Llun 20 Gorffennaf, rhwng 10.00yb a 4.00yp, yng Nghanolfan David Hughes ym Miwmares. Mae mynediad yn rhad ac am ddim.



It started with a suitcase
 Victoria Craig, Menai Strait's Heritage Sailing

Last year, Menai Strait's Heritage Sailing (MSHS) hosted an exhibition celebrating local maritime history. It all began with Mr David Gallichan's suitcase of old photographs. David generously spent hours with me, sharing the stories behind each image. He has devoted his life to sailing on the Strait; it's fair to say that the sea runs through his veins. As a long-standing member of MSHS and owner of *Ceris* (fleet number 11), his knowledge and passion brought the past vividly to life.

Our Exhibition last October was met with a warm reception and wonderful feedback. One message stood out, however: people wanted more! As the Exhibition ran only for a single day, we promised that we would return, and we're delighted to announce that, on 18 July, we will reopen our Exhibition for a full weekend at the David Hughes Centre in Beaumaris.



MSODau 11 *Ceris*, 12 *Flying Cloud* a 5 *Aderyn* yn rasio i lawr yr Afon tuag at Fiwmares
MSODs 11 *Ceris*, 12 *Flying Cloud* and 5 *Aderyn* racing down the Strait towards Beaumaris
(David Gallichan)

MSSH is a heritage and wellbeing registered charity based at Gallows Point, Beaumaris. It was founded in 2021 and secured charitable incorporated organisation (CIO) status in 2023. At its heart is a remarkable fleet of 17 yachts, the lovely Menai Strait One Design (MSOD) sloops, built in Beaumaris from 1937 onwards, believed to be the oldest complete fleet of its kind in the world. The charity is dedicated not only to preserving these boats for future generations, but also to ensuring that their legacy is shared.

Read a short history of the fleet, *The Marks & Spencer boats...* in **The Puffin** 45, August 2023, page 3.



MSODau 11 *Ceris*, 16 *Treleda* a 5 *Aderyn* yn rasio i lawr yr Afon
MSODs 11 *Ceris*, 12 *Flying Cloud* and 5 *Aderyn* racing down the Strait
(David Gallichan)

Through free sailing opportunities, particularly for those who might not otherwise have access, the charity supports health and wellbeing across the community. Working with local ser-

vices and social prescribing initiatives it reaches individuals, groups and organisations who can benefit most. Alongside this, the community shed offers opportunities to learn new skills, from boat maintenance and preservation to traditional craftsmanship, bringing people together and fostering a strong, inclusive community.



Pedwar ar ddeg o Fife oddi ar Bier Bangor
Fourteen Fifes off Bangor Pier
(Henry Chesterton)

The Exhibition is a small but meaningful part of this wider mission: preserving local history while making it accessible and relevant today.

While highlighting the work of the charity and the story of the 17 MSOD boats, how they were rescued and brought back home to the Strait, the exhibition also explores the rich maritime history of the Menai Strait itself. The Menai Strait is quite special because it brings together a wide mix of sailing classes, both traditional and modern, thanks to its challenging tides and strong local sailing culture. The exhibition also tells the story of the many different sailing classes which share the water and the skill required to navigate this magnificent and challenging stretch of sea.

The Exhibition will run from Saturday 18-Monday 20 July, 10.00am-4.00pm, at the David Hughes Centre in Beaumaris. Entry is free.



Seiriol Men's Shed: busy times!

Steve Jones

We were recently invited to a meeting with the manager and recycling project leader at Isle of Anglesey County Council's Penhesgyn site. Wales is leading the way on sustainability and recycling, and we were excited to be considered as a possible partner with its planned recycling projects. At Seiriol Men's Shed we've been tasked with recycling and upcycling furniture and materials which would have previously been destined for the skips. Our Shed is now a registered waste carrier which permits us to collect and remove furniture and materials from the site which will be used on projects at the Shed.

We have a fantastic well-equipped workshop at Haulfre in Llangoed, but until recently had very limited storage space

available. Elen Parry of Mentor Môn in Llangefni has been working with the Cylchol Project. Elen contacted us regarding the possible availability of funding which could help with our storage issues, and we were able to secure a grant to purchase a shipping container which is now sited adjacent to our workshop.

Now we have ample storage for materials and furniture collected from Penhesgyn and donated by the local community. Funding was also secured which enabled us to purchase a sandblasting unit and an air compressor. The compressor will be used to power the sandblaster and will also enable us to spray-paint furniture and other items that would previously have been painted by hand.



The container arrives, and is soon in place (Steve Jones)



If you have furniture that you would like to update, upcycle or would like to donate please give us a call.

Last year we refurbished numerous garden benches. The cast-iron frames were stripped and resprayed and the rotted and damaged timber replaced with quality hardwood. We have frames available if you are looking for a quality bench which can be sprayed in a colour of your choice. Why not bring your long-neglected garden furniture for a makeover for the new season?

We can build planters to order. If you require a specific size or shape give us a call for a quotation. All the timber we use for the build is pressure-treated and can be stained or painted in your colour of choice.

Our Shed at Haulfre is still a drop-off point for unwanted hand tools. We check them, clean them and, if necessary, repair them before they are collected and shipped on behalf of the Tools for Africa project.

If you have any projects that we can help with or give advice or guidance, why not call in and see us or give Steve a call?

puffinpages@gmail.com

☎ Steve Jones 07368 219048

✉ seiriolmenshed@gmail.com

🏠 Seiriol Men's Shed

www.facebook.com/profile.php?id=61564967474652

📍 Seiriol Men's Shed

The Flat
Gerddi Haulfre
Llangoed
LL58 8RY

You'll find more information and directions on page 18.



Llangoed WI

Deborah Booth, Press Officer

Here's a round-up of our last three months...

February: our AGM took place in February, with a review of the previous year's activities.

March: we celebrated St David's Day by consuming a wonderful buffet prepared by our members. There were quiches, sandwiches, sausage rolls, cakes and trifles – delicious!

We previewed our forthcoming programme of events, and there is certainly a lot to look forward to! Speakers will include Caitlin McGongle, who is a police community support officer; Kristoffer Hughes (Chief Druid), and author Alison Layland. There are also crafting meetings, our summer and Christmas events, and our resolutions meeting! There's never a dull moment with Llangoed WI ladies.

April/May: Peter Hughes from Marie Curie joined us in April, and in May Janet Robinson and Peter Williamson came to talk to us about the Grŵp Natur Seiriol good work scheme

Meetings: Llangoed WI meets on the first Wednesday of the month in Neuadd Bentref Llangoed Village Hall; meetings begin at 2.00pm in the back room.

Please contact our new Secretary, Chrissy Newsham, for more details.

☎ 07836 272488

Joining the WI: don't delay! Join today! You'll find contact details in *What's happening where?* on page 17.

Please contact our President, Christina Linford, for more details.

☎ 01248 490184

Don't forget: you can come to three meetings to "try before you buy!", so what's stopping you?



May's front cover

Andrew Perrott (introduction) & Jane Bunce

It's that time of the year... **The Puffin 56** contains a wealth of information about the National Open Gardens Scheme (NGS), including details of the group opening in Llanddona on Saturday 11 July. You'll find a lot more information on pages 27-30.

Two of our front covers have featured Jane Bunce's lovely artwork on them: **The Puffin 48**, May 2024 and **The Puffin 52**, May 2025, and we're pleased to feature a third painting on this front cover. Jane's story follows on the next page.

I inherited my love of drawing and painting from my father. He was a landscape painter and art teacher, and was a member of the Manchester Academy of Artists. With his guidance I learnt the importance of observation and practice (which, hopefully, eventually makes perfect). He believed also that it is essential to paint the subjects that really interest you.

My parents loved nature; our garden had a glorious display of flowers thanks to my mother's green fingers, and a pond for the wildlife, and my interest in nature grew from those early years.

I went to Altrincham Grammar School and studied art at 'A' level as one of my subjects. While I was there I attended a careers evening and listened to a talk on textile design; it was a revelation to discover that it was possible to earn a living from painting patterns. What joy!

After contacting the Calico Printers Association in Manchester, I was asked to attend an interview, and was offered a position working in their commercial art studio. Here I learnt my trade, beginning with making the coffee. It was hard work, but immensely rewarding. The job wasn't only about being creative but also about having a technical knowledge of the industry.

From there, as my experience grew, I was employed by a design company which had a branch in Düsseldorf as well as in Manchester, so I produced work for European and British manufacturers.

Eventually I became self-employed, taking on commission work and creating new collections which included wallpaper designs as well as textiles. These were sold in America, Europe and the UK through a design agency which did all the hard work of travelling and selling, enabling me to stay at home and paint.

In the late 1990s I moved to Penmon with my family, and eventually I retired from designing and began to paint for my own pleasure...no more deadlines or commissions!



My studio: a small selection of my work, and some of my materials (Jane Bunce)

Here on Anglesey I find inspiration all around me; whenever I go for a walk I fill my pockets with bits of plants, twigs, rocks or shells, anything that I find interesting, in fact. I work mostly in watercolours, and also in gouache, which is a water-based medium. I rarely use photographs for reference; I like to have samples of the plants and objects that I paint on my desk so that I can study them carefully.

Birds are much trickier to paint, but I spend a lot of time observing them, and I try to capture their appearance accurately. I hope that my pictures express my love of nature, a love deepened by living on Anglesey with its breathtaking beauty and diversity of wildlife.

I believe that a connection with nature is vital for our wellbeing, and that it is essential that we value and protect the natural environment. If I'm at home visitors are welcome to see my work and have a chat.

☎ 01248 490395, 07947 148031

✉ janebunce@mail.com

📍 Dinmor
Penmon
Anglesey
LL58 8SN

📄 Anglesey Arts Forum: Jane Bunce
www.angleseyartsforum.org/author/janebunce/

The Puffin: what you're saying about us

The Editorial Team

We're nearing the end of an edition of **The Puffin** that's packed with information and thought-provoking news and articles so we thought that we ought to tell you what people have been saying about **The Puffin**.

With our ability this year to increase the number of pages in **The Puffin** to 48 we decided to change the presentation of much of our content from 3 columns to 2 columns. This means that we're able now to include larger illustrations, and more of them, and present our articles so that they look less cramped.

You, our readers, have obviously noticed the changes; we've received some lovely comments: face-to-face, by e-mail and by text. Here are a few of them.



- I think we're so fortunate to have this publication throughout the year – it is not only very informative about much of Anglesey but also has really fascinating features... I always particularly enjoy Roz Hattey's Nature Notes. Thank you so much to... all the editorial team.

Meg Marsden, Llanddona

- I've never seen your magazine 'in the wild', so to speak, but I'm very impressed by the online version. It's a joy to encounter something that's produced with such obvious skill and care, so congratulations to all involved.

Andy Dobbie, Island Art Group

- As an old friend of one of your editorial team, I have regularly been sent a copy of **The Puffin**. I just wanted to say how much I like the new version. The new printing has improved the presentation of the articles and photographs, so that everything is easier to navigate and doesn't look so cramped. The quality of the print paper is so superior, lifting **The Puffin** from being just a local amateur newsletter to a product which is more sophisticated and professional in its presentation. Well done!

Evelyn Costello, Shooters Hill, London

- "**The Puffin** is not just a magazine you look at and put in a drawer; it has so much useful information in it."

Fiona Pearce, North Wales Eye Specialist Centre



Thank you, everybody: we say it regularly, but your comments really do make publishing **The Puffin** such a rewarding and worthwhile task!

The Puffin: advertising, our readership and on-line viewing

The Editorial Team

We've been doing a little homework about **The Puffin** and how widely read it is, and were pleasantly surprised.

The Puffin says a big 'thank you' to the businesses, small and large, that advertise with us; it enables them to 'spread the word' about their business, locally and further afield. Just as importantly, advertising income is vital to **The Puffin's** continuing existence.

We print 1,000 copies of **The Puffin** every quarter (4,000 per year), and are hoping to increase our quarterly print run slowly as finances permit; these are collected from well-advertised outlets around the area.

Each copy will probably be read by at least two people. We deposit a significant number of copies at 30+ locations where people gather, such as cafés, community centres and surger-

HYSBYSEBWCH YN **The Puffin**

Ydych chi wedi meddwl am hyrwyddo eich busnes yn **The Puffin**?

MAE'N GYLCHGRAWN AM DDIM!

Mae **The Puffin** yn gylchgrawn chwarterol am ddim, a gyhoeddir ym mis Chwefror, Mai, Awst a Thachwedd gan ddim o wirfoddolwyr lleol. Mae ar gael yn rhad ac am ddim ledled ardal Ward Seiriol, Ynys Môn.

MAE AR GAEL YN EANG!

Mae **The Puffin** ar gael mewn 14 o allfeydd, ac mae hefyd yn cael ei ddarllen yn eang ar-lein yn www.seiriolalliance.co.uk/newsletters/.

Mae copiâu hefyd yn cael eu gosod mewn llawer o leoliadau eraill yn lleol, gan gynnwys gwestai, siopau, bwytai a chaffis.

MAE'N DDIDDOROL AC YN ADDYSGIADOL!

Mae **The Puffin** yn cynnwys ystod eang o erthyglau diddorol, ynghyd ag adran ddefnyddiol iawn *What's happening where?* sy'n hysbysu'r darlennydd am ddigwyddiadau, rheolaidd ac achlysurol, sy'n cael eu cynnal yn yr ardal leol ac ymhellach i ffwrdd.

MAE EIN PRISIAU'N GYSTADLEUOL!

Mae cyfraddau hysbysebu **The Puffin** yn gystadleuol iawn, ac yn amrywio o £16 am hysbyseb fach i £120 am dudalen lawn. Gallwn hefyd helpu gyda dylunio eich hysbyseb os oes angen.

CEFNOGWCH NI!

Cefnogwch **The Puffin** drwy hysbysebu gyda ni! Byddem wrth ein bodd yn cael eich cefnogaeth tra'n hyrwyddo eich busnes i galon ein cymuned fywiog ac i ymwelwyr â Ynys Môn brydferth.

CYSYLLTWCŊ Â NI!

Cysylltwch â mi, Mavis Bishop, os hoffech ragor o wybodaeth. Rwy'n aelod o dîm golygyddol **The Puffin** sy'n gyfrifol am hysbysebu, a byddwn wrth fy modd yn trafod cyfleoedd hysbysebu gyda chi.

Ffôn: **07779 603074**

E-bost: puffinpages@gmail.com



ADVERTISE IN **The Puffin**

Have you thought of promoting your business in **The Puffin**?

IT'S A FREE MAGAZINE!

The Puffin is a free quarterly magazine, published in February, May, August and November by a team of local volunteers. It is available free of charge throughout the Seiriol Ward area of Anglesey.

IT'S WIDELY AVAILABLE!

The Puffin is available in 14 outlets, and is widely read on-line at www.seiriolalliance.co.uk/newsletters/ as well.

Copies are also placed in many other locations locally, including hotels, shops, restaurants and cafés.

IT'S INTERESTING AND INFORMATIVE!

The Puffin features a wide range of interesting articles and a very useful *What's happening where?* section that informs the reader of events, regular and one-off, that take place in the locality and further afield.

OUR ADVERTISING RATES ARE COMPETITIVE!

The Puffin's advertising rates are very competitive, and range from £32 for a quarter-page advertisement to £120 for a full page. We are able to help with designing your advertisement if needed.

SUPPORT US!

Support **The Puffin** by advertising with us! We would love your support whilst promoting your business to the heart of our vibrant community and to visitors to the beautiful Isle of Anglesey.

CONTACT US!

Contact me, Mavis Bishop, if you would like more information. I'm **The Puffin**'s Editorial Team member responsible for advertising, and I'd be delighted to discuss advertising opportunities with you.

Telephone: **07779 603074**

E-mail: puffinpages@gmail.com



ies, places where they'll be seen by considerably more people... a real community asset.

On-line viewing of 55, February 2026 (the most recent edition) was 5,400, so at present your advertisement will probably be seen by between 6,400 and 7,400 people.



Little Lucy on zedding...

Little Lucy (dogtated to Andrew Perrott)

Little Lucy here again: the Dogtation Boss said the word 'dogtation' to me the other day, and do you know what?... he woke me up while I was in the middle of some serious zedding.

I'm used to this sort of inconvenience in my eventful life: he often overlooks my small but important needs, but I cope with his occasional thoughtlessness. After all, he does feed me well, and I do like the long walks.

When I'm not walking and occupying myself with things like being a watchdog (AP: Little Lucy is an excellent watchdog; a 'big dog' noise and presence from such a small package) I like to do some serious zedding.

I told the Boss that I'd tell you something about this art. 'Don't you mean Zen?' he asked. 'You know nothing about Zen.' Neither does he, I thought, but I know loads about zedding.

puffinpages@gmail.com

Comfort is the main zedding requirement... I like the Boss's armchair because it's nice and soft. It's best when he's just been sitting in it, because that means it's still nice and warm; he gets quite cross with me when I try to jump up into it before he's moved out of the way.



My favourite bed is by the fireplace. It's a really snug doughnut bed. It fits like a glove, but sometimes I get too hot. He



always asks me why I don't get right out and be done with it, but that's not the way a Westie's mind works: I always try to move as little as possible.

My bezzie Edie had the *zeddingest* bed. It's a huge fluffy thing, and when I lie in it



I disappear because it's almost the same colour as my woolly coat.

Edie lets me adopt it as my bed while I'm there which is nice of her. I think it's



because she wants some peace. She just didn't want to play last time we visited. She can be such a grump sometimes.

I see my friends Nancy and Millie across



the lane every day because we eat our

meals together. I'm the quickest eater so I usually have the most food. Nancy tries it on because she thinks she'll get more food if she moves to my plate. It never works because I finish before her and chomp what's left on her plate ha ha. She'll learn one day...

After my food I need to do some zedding in the nearest bed. It's even more cosy when there's a cushion for me to hide beneath while Nancy shows her criminal tendencies... she picks pockets. I tried it a couple of times when I was a pup but

wasn't very good at it. I really must ask



her if she'll give me some lessons...

STOP PRESS Additions, amendments, omissions

This insert reached us too late to be included under the *What's happening where?* heading.

Anglesey, Gwynedd

- **PALS:** mae PALS yn grŵp cyfeillgarwch ar gyfer pobol dros 55 yng Nghwynedd ac Ynys Môn sy'n dymun cymdeithasu a mwynhau cwmni pobol eraill tebyg.

Croeso i ddynion a ferched sengl, wedi ysgaru neu'n weddw ac efallai yn unig.

Ein harwyddair: 'Ein nod yw cyfarfod fel dieithriaid a gadael fel ffrindiau'.

Rydym yn gobeithio trefnu nosweithiau lle gallwn gyfarfod a gwneud ffrindiau newydd. Rydym yn cyfarfod ar yr 28ain o bob mis am:

☒ Gwesty Carreg Bran Hotel
Church Lane
Llanfairpwll
Anglesey
LL61 5YH

Am fanylion ynghylch sut i ymuno, ffoniwch fi, Eryl Casey (Cymraeg a Saesneg yn cael eu siarad), ar:

☎ 07743 777248

Sylwer nad ydym yn safle dyddio.

- **PALS:** PALS is a group for people over the age of 55 dwelling in Anglesey and Gwynedd who like to be sociable and enjoy the company of other like-minded people.

We welcome men and women who are single, divorced, widowed and alone.

Our motto: 'We aim to meet as strangers and leave as friends'.

Our aim is to arrange evenings where we can meet and make new friends. We meet on the 28th of each month at:

☒ Gwesty Carreg Bran Hotel
Church Lane
Llanfairpwll
Anglesey
LL61 5YH

For details of how to join, telephone me, Eryl Casey (Welsh and English spoken), on:

☎ 07743 777248

Please note that we are not a dating site.

Beaumaris

Apologies: **The Puffin's** typesetter overlooked the e-mail with some of this information in it.

Here are the entries as they should have appeared on pages 8 and 9.

- **Beaumaris Over 50s Club:** you're welcome to join us if you're 50+ and live in or near Beaumaris.

Club meetings take place at 2.00pm on the last Monday of the month.

Annual cost of membership is only £5; contributions are taken at each meeting towards tea/coffee and raffle prizes.

- 29 June: Bingo and Strawberry Tea.
- July: no meeting.
- August: no meeting.

- 28 September: the next meeting.

For more details, please contact the Chair, Mike Davies.

☎ 01248 812157, 07483 827069

✉ dmikedmail@gmail.com

☒ The Iorwerth Rowlands Centre
Steeple Lane
Beaumaris
LL58 8AE

- **Beaumaris Singing For Pleasure Group:** do you want to:

- Improve your memory?
- Relieve stress and anxiety?
- Boost your immune system?
- Improve your lung function?
- Uplift your mood?
- Make new friends?

...and, most importantly, have some fun?

If the answer's YES, join us at the Iorwerth Rowlands Centre on Mondays, 11.00am-12.00 noon.

£2.50 per session, including tea, coffee, biscuits. New members will be very welcome!

We will meet as usual, other than on 25 May, which is a Bank Holiday.

For more information, please contact Mike Davies

☎ 01248 812157, 07483 82706

✉ dmikedmail@gmail.com

☒ The Iorwerth
Rowlands Centre
Steeple Lane
Beaumaris
LL58 8AE

Some local Facebook community links

- Anglesey Community Noticeboard/Hysbysfwrdd Cymunedol Môn
www.facebook.com/groups/205528177434085/
- Friends of Beaumaris
www.facebook.com/groups/521368261344315/
- Beaumaris Community Activities and Information/Gweithgareddau Biwmares
www.facebook.com/groups/400365856820659/
- Ffrindiau Cwlwm Seiriol Friends
www.facebook.com/groups/395263584239092/
- Cymuned Llanddona Community
www.facebook.com/groups/llanddona/
- Cymuned Llandegfan Community
www.facebook.com/groups/1518554195120520/
- Ffrindiau Llangoed
www.facebook.com/groups/1458577214379355/
- Cymuned Llangoed Community
www.facebook.com/groups/Llangoed/
- Pobol Llansadwrn People
www.facebook.com/groups/3140572646162274/
- Hysbysfwrdd Seiriol Noticeboard
www.facebook.com/groups/1600203890233039/

Editorial information and other 'useful to know' stuff

The Editorial Team

Richard Adams	John Nunn
Mavis Bishop	Andrew Perrott
Paul Bishop	Owen Williams
Robert Macaulay	✉ puffinpages@gmail.com

Editorial Policy

- **The Puffin** is a community journal. It does not become involved in matters such as politics, local or national, but is intended to be a means of bringing people and communities together, celebrating our 'sense of community' and the beautiful part of the world in which we live, so please be kind, courteous and respectful. 'Hot' topics related to the local context are fine, but we ask that people respect the fact that alternative views may be valid as well.
- We welcome news, letters and interesting articles, in Welsh and in English, as long as they are attributed to an author; please don't send us anything marked 'not for publication'.
- The views expressed in **The Puffin** do not necessarily represent those of the Editorial Team.
- We review all items for material that is obviously libellous or offensive, but we cannot check for factual accuracy because we might not be sufficiently expert on the topic, and because of time constraints.
- If you have strong feelings about what is said, or is not said, in **The Puffin**, don't bottle it up: get in touch with us or join the group of volunteers who form the Editorial Team who enable its production.

General information and publication dates

- We will do our best to reply to your e-mails quickly.
- If you e-mail photographs and other pictures to us for inclusion in **The Puffin**, please send them in .jpg format if possible. If you send photographs or documents to us by post, be sure to enclose a stamped, self-addressed envelope so that we can return them to you after they've been scanned.
- The word count per column is c.350 (three-column page) and c.520 (two-column page).
- **The Puffin** is published in:
February: submissions **must** be in by 1 January
May: submissions **must** be in by 1 April
August: submissions **must** be in by 1 July
November: submissions **must** be in by 1 October

Submissions and donations by post

- We are happy to receive submissions – and donations, of course! – by post. Please send them to:
 Andrew Perrott
 Glangors
 Llanddona
 Anglesey
 LL58 8TU
 Mark the envelope **The Puffin** and enclose your address, an e-mail address and/or telephone number so that we can let you have an acknowledgement and a 'thank you'.
- If you would like to make a donation by bank transfer, our details are:
 Bank: **NatWest**
 Account name: **The Puffin**
 Account number: **88609782**
 Sort code **54-10-01**

Sponsorship and advertising

- Please contact us by e-mail if you would like to sponsor **The Puffin** or place an advertisement in it.

Where to pick up your copy of **The Puffin**

- **Beaumaris**
 ABC Service Station, Gallows Point, LL58 8YH
 Canolfan Hamdden Beaumaris, Rating Row, LL58 8AL
 Central Bakery, 22 Margaret Street, LL58 8DN
 Ena's Newsagents, 24 Castle Street, LL58 8AP
 Spar, 11 Castle Street, LL58 8AB
 Town Hall (entrance lobby), Castle Street, LL58 8AP
- **Llanddona**
 Yr Owain Glyndŵr, LL58 8UF
 Wern y Wylan, LL58 8TR (at Wern y Wylan Court)
 Neuadd Bentref Llanddona Village Hall, LL58 8TS
- **Llandegfan**
 Siop Llandêg, Lon Ganol, LL59 5UA
- **Llangoed**
 Morrisons Daily, China House, LL58 8NW
 Neuadd Bentref Llangoed Village Hall, LL58 8NY
- **Penmon**
 The Pilot House Café, Black Point, LL58 8RR

On-line

www.seiriolalliance.co.uk/newsletters/

Some useful contacts

Alcoholics Anonymous	0800 917 7650
Canolfan Iechyd Beaumaris Health Centre	01248 810818
Canolfan Hamdden Beaumaris	01248 811200
Cynllun Tro Da Seiriol Good Turn Scheme	01248 305014
Dŵr Cymru/Welsh Water:	leaks
water services and emergencies	0800 052 0130
sewerage services and emergencies	0800 085 3968
Electricity (SP Energy Networks):	information about power cuts
information about power cuts	0800 001 5400
Floodline	0345 988 1188
Gas: National Gas Emergency Service	0800 111 999
Isle of Anglesey County Council:	01248 750057
Beaumaris library	01248 810659
Children's Services	01248 752722
missed waste collections	01248 752860
NHS (NHS Direct closed in 2014):	for non-emergency medical help
for non-emergency medical help	111
NSPCC:	help for adults concerned about a child
help for adults concerned about a child	0808 800 5000
help for children and young people	0800 1111
Police: non-emergency	101
PCSO: not known	-
PCSO: not known	-
Post Office:	customer helpline
customer helpline	0345 611 2970
Morrisons Daily, Llangoed	01248 490056
Spar, Beaumaris	01248 810326
RSPCA:	daily, 9.00am-6.00pm
daily, 9.00am-6.00pm	07490 642555
Samaritans:	English language
English language	116123
Welsh language	0808 164 0123
Ysbyty Gwynedd Hospital	01248 384384



Bar & Bistro
Rhos-on-Sea

LLANDDONA OPEN GARDENS 🌸 SATURDAY 11 JULY 2026

The numbers **1** to **9** below correspond with the numbers in the map overleaf

<p>1 Tŷ Capel Peniel and Capel Peniel War Memorial Llanddona LL58 8TU Public access to War Memorial at any time from lane</p>	<ul style="list-style-type: none"> • Work under way on a long-neglected garden; views towards Snowdonia • Wooded area at rear; some interesting old architectural features • Work being undertaken to Chapel; please note that the Chapel will not be open to the public • Dogs welcome on lead; outside toilet facilities
<p>2 Glangors Llanddona LL58 8TU</p>	<ul style="list-style-type: none"> • Work in progress on a recently restored garden; views across Anglesey towards Holyhead; wildlife area • Dogs welcome on lead; toilet facilities • Plant sales
<p>3 Pen-y-Gorllewin Llanddona LL58 8TU</p>	<ul style="list-style-type: none"> • Colourful garden making extensive use of pots; raised beds; greenhouse • Dogs welcome on lead • Wheelchair access
<p>4 Y Gilfach Llanddona LL58 8TS</p>	<ul style="list-style-type: none"> • Colourful 'hidden' cottage garden making extensive use of pots; views of Snowdonia • Dogs welcome on lead • Wheelchair access
<p>5 Llain Gron Llanddona LL58 8UF</p>	<ul style="list-style-type: none"> • Attractive garden, brought back to life by the present owners • Large lawned area; greenhouse; vegetable garden; many interesting plants • Unusual feature: a large glaciated rock outcrop, enhanced with colourful planting
<p>6 Neuadd Bentref Llanddona Village Hall Llanddona LL58 8TS</p>	<ul style="list-style-type: none"> • Pleasant raised flower beds at entrance • Outdoor fitness area • Impressive large mural featuring Llanddona • Refreshments available; dogs welcome on lead • Fully accessible disabled toilets; baby changing facilities
<p>7 Cefn Farm Llangoed LL58 8PW</p>	<ul style="list-style-type: none"> • Walled cottage garden featuring stones from the original Penmon Priory; views over the Menai Strait • Dogs welcome on lead; toilet facilities; refreshments available • Plant sales; gardening books/plant books for sale; eggs and seasonal vegetables for sale • Vintage farm machinery on display • Wheelchair access <i>with care</i>; some cobbles and gravel • Limited parking facilities
<p>8 Bryn Rhedyn Llangoed LL58 8PW</p>	<ul style="list-style-type: none"> • Interesting garden with small orchard; greenhouse; views over the Menai Strait; picnic area • Dogs welcome on lead • Wheelchair access <i>with care</i>
<p>9 Ger yr Afon Llangoed LL58 8PW</p>	<ul style="list-style-type: none"> • Interesting garden: lawns, mixed borders/beds; woodland walk along the river • Cutting/kitchen garden with greenhouses • Views over the Menai Strait • Dogs welcome on lead; toilet facilities • Plant sales

