

# The Puffin

**FREE** community magazine • published quarterly

Number 44 • May 2023

## **Serving...**

- Beaumaris
- Glanrafon
- Llanddona
- Llandefan
- Llanfaes
- Llangoed
- Llansadwrn
- Penmon

**...and on-line**

## WEATHER!

John Nunn

Recently I strolled along our beautiful country lane near my home. As I strolled, I thought: hang on, warm weather, bright sunshine? What's going on? Could it be the arrival of spring? I love spring when the days get longer and the weather warms. The plants grow, the meadows flower, the lambs jump around the fields, and I reach for my sun cream!

We've just come through a winter with an unusually cold spell in the run-up to Christmas. Then January was mild, but followed in late February and early March by another cold spell. And right now, in mid-March, the mercury is once again in double figures.

Weather variations like these happen every year in one way or another. Sometimes they are extreme, sometimes not, and they are not always in the same order! In turn, these have consequences for wildlife. The stability of the seasons is important to make the right food available at the right times. For example, the timing of flowering plants can affect the insects that feed on them. And in turn, the birds that feed on those insects. It's why very complex and interconnected natural systems depend on our weather. And at the end of all these natural systems is...we humans! For despite our best endeavours, we are also part of the natural system. "Spanish tomatoes": need I say more?

So when our weather gets upset, as it has been doing a lot in recent times, we can see the effects as we look around our area. For example, did you notice how early those hard frosts came after a very mild autumn? I noticed that some trees, like birch, had not yet dropped their leaves. We had the spectacle of a frosted winter landscape with birch trees still in leaf. Yet those same birch started to drop their leaves last summer. They were protecting themselves from the drought and extreme temperatures. It was very confusing!

So: all that begs the question, what sort of summer are we going to have this year? Is it going to be another "driest since records began"? Are we going to be watching our gardens die as a result of (a) no rain and (b) an ensuing hosepipe ban? Or will we be swimming in floods? Is it time we looked at growing different plants in our gardens? Ones that are more resilient to our changeable weather? Is every day going to be a beach day?

Well, we're in the right place for that! As a retiree lounging in my garden am I going to be pitying all those who have to work for a living.

**A note of caution** What I describe are recent local experiences, but what climate scientists report is more worrying global

trends. Unfortunately, social media are awash with rubbish on climate change and, at times, populist media obfuscate or add political 'spin'...so where do we go for an understanding of the evidence?

The links to a few useful sources are given below if you'd like to read more on the subject.

Natural Resources Wales provides a digest of the main issues for us in Wales.

📄 Climate change overview  
<https://naturalresources.wales/about-us/what-we-do/climate-change/climate-change-overview/lang=en>

The Intergovernmental Panel on Climate Change (IPCC) provides a useful global digest of evidence. The IPCC is the United Nations body for assessing the science related to climate change, and it has just published its sixth report.

📄 The Intergovernmental Panel on Climate Change  
[www.ipcc.ch](http://www.ipcc.ch)

📄 AR6 Synthesis Report: Climate Change 2023  
[www.ipcc.ch/report/AR6/syr/](http://www.ipcc.ch/report/AR6/syr/)

📄 Synthesis Report of the IPCC Sixth Assessment Report (AR6): Summary For Policymakers [36 pages]  
[https://report.ipcc.ch/ar6syr/pdf/IPCC\\_AR6\\_SYR\\_SPM.pdf](https://report.ipcc.ch/ar6syr/pdf/IPCC_AR6_SYR_SPM.pdf)

The Welsh Government's *Climate Action Wales* webpage looks like another source of useful and interesting information.

📄 Climate Action Wales  
[www.gov.wales/climate-action-wales](http://www.gov.wales/climate-action-wales)

**A 'thank you' note from Tilly** John Nunn said that I could dogtate a 'thank you' note to our readers...



Please ignore the state of my whiskers...life seems to be a permanent 'bad whiskers day'

When the Boss collected the newspapers from Ena's Newsagents one Sunday morning early in February

there was a donation to **The Puffin** waiting to be collected!

He showed it to me and took my photograph with it. I really must say a big 'thank you', on behalf of me and my Editorial Team, not just to the person whose donation it was, but to everybody who supports us, because **The Puffin** can't 'do it without you'!

Now turn to page 27 and read more about what I've been up to...it's such a busy life being a Media Pooch.

(...me and my Editorial Team indeed...!)

• • • • •

## MAY'S FRONT COVER

Sally Fairclough

**The Puffin** is very pleased to feature on its front cover an excerpt from one of Sally Fairclough's photographs of the local area, enhanced to a 'secret recipe'.

It's an early morning photograph, taken from the end of Beaumaris pier, looking towards Llandudno, and shows the Ormes, Great and Little, and the Irish Sea beyond.

Sally is a Beaumaris artist who has just opened a gallery and workshop in Margaret Street. Read more about about her art and motivations below.

◆ ◆ ◆

Says Sally: I originate from Lancashire; I was born in Blackburn but lived most of my life in Burnley and surrounding areas. I worked in the NHS as a Nurse, Midwife and Health Visitor for more than 20 years, and in my late 40s decided to follow my dream of becoming an artist.

We moved to Longridge in the Ribble Valley; I completed a foundation course in Fine Art at the University of Central Lancashire and began creating art from my kitchen.

We moved to Anglesey in August 2016, to our home in Beaumaris, where I was fortunate enough to be able to set up a studio and began creating art full-time.

I've formed many great friendships with other artists and developed my range of creativity through collaboration, joining art groups, taking workshops and being involved in art exhibitions.

I like to use a variety of techniques, from lino printing to digital art, but my preferred media are oil, acrylic and watercolour paints.

I try to convey mood and emotion in my paintings, using a varied colour palette and different techniques. I paint a variety of subjects including still life, animals and landscape.

In 2020, during the COVID pandemic, I developed a love for sewing, and created functional items and, inspired by the needlework of Kaffe Fassett, pieces of embroidery and tapestry, drawing my own designs onto the fabric.



# STiWdio

BIWMARES

17 Margaret Street, Beaumaris LL58 8DN

03300 531897

<https://sallyfaircloughartist.com>

[www.facebook.com/sallyfaircloughstudiobeumaris/](http://www.facebook.com/sallyfaircloughstudiobeumaris/)



Stiwdio Biwmares has been carefully renovated from its previous use to give a warm and welcoming environment and encourage visitors to browse and share their interests in art. It is also a working studio that will be available for artists and makers to run workshops, so sharing their expertise and skills.

Stiwdio Biwmares stocks a large range of art supplies, including paints, loose-leaf papers, printing equipment and inks, charcoals, pastels, brushes and more. It is a registered stockist for Annie Sloan's chalk paints and accompanying products.

## WHAT'S HAPPENING WHERE?

*What's happening where?* continues to grow. If you think that an event is missing and should be mentioned, do make sure that you let us know in good time:

- 1 January for February
- 1 April for May
- 1 July for August
- 1 October for November

Our contact details are always given in *Editorial information and other 'useful to know' stuff* on the back page.

We want to support you, but we can't do so if you don't support us by feeding information to us...support us to support your community!

Keep an eye on websites, local advertising and social media, Facebook and the like, because changes can affect events either way, some happening suddenly or cancelled just as suddenly.

- Check beforehand to make sure that an event is happening.
- Remember to take a mask with you.

**Attention, voluntary groups!** If your organisation has opportunities to fill, think about placing an advertisement with us.

Our contact details are always on the back page.

[puffinpages@gmail.com](mailto:puffinpages@gmail.com)

**Some useful local services** This is a new feature which we hope that you will find useful.

- **Cashpoints:** there are now no banks in the Seiriol area, but we know of two cashpoints:
  - **Jolly's**, 5 Bulkeley Terrace, Beaumaris LL58 8AU, outside, at what used to be the NatWest bank
  - **Spar**, 11 Castle Street, Beaumaris LL58 8AB: inside, during opening hours

Please let us know if you know of any others so that we can list them.

- **Beaumaris library:** Beaumaris library is at:  
David Hughes Community Centre  
Beaumaris  
Anglesey  
LL58 8AL

Opening times are:

Monday 2.30pm-6.00pm  
Wednesday 10.00am-12.30pm  
Friday 9.00am-1pm

☎ 01248 810659

✉ [ddxlh@anglesey.gov.wales](mailto:ddxlh@anglesey.gov.wales)

- **Mobile library:** the mobile library visits communities which are more than ¼ mile from one of Anglesey's libraries. It carries a small but

comprehensive selection of books and tapes, and also provides a gateway to other library services.

The mobile library visits the following communities on the 3<sup>rd</sup> Friday of the month:

- **Llanddona:**  
Neuadd Bentref Llanddona  
Village Hall  
11.30am-12.30pm  
Maes Gwyn  
1.10pm-1.45pm
- **Llanfaes:**  
The Shop  
9.30am-10.00am
- **Llangoed:**  
Pont y Brenin  
10.10am-10.40am  
Aberlleiniog car park  
10.45am-11.15am
- **Llansadwrn:**  
Tan-y-Ffordd  
2.00pm-2.30pm

☎ 01248 752093, 01248 752095

Telephone Llangefni Library if you would like more information about the doorstep delivery service.

☎ 01248 752093

📄 **Mobile and Home Library Service**  
[www.anglesey.gov.wales/en/Residents/Libraries/Mobile-and-Home-Library-Service.aspx](http://www.anglesey.gov.wales/en/Residents/Libraries/Mobile-and-Home-Library-Service.aspx)

- **Household waste recycling:** Anglesey residents do not need to book a slot to use the Penhesgyn Household Waste Recycling Centre: Vehicles must be no longer than **5m** and no higher than 2.1m, including any attachments, and householders must produce proof of residency on the Isle of Anglesey, such as a current Council Tax bill, driving licence or recent (less than 3 months old) utility bill.

Opening times are:

Monday 10.00am-4.30pm  
 Tuesday 10.00am-4.30pm  
 Friday 10.00am-4.30pm  
 Saturday 10.00am-4.30pm  
 Sunday 10.00am-4.30pm

☑ Penhesgyn Household Waste Recycling Centre  
[www.anglesey.gov.wales/en/Residents/Bins-and-recycling/Recycling-centres-and-recycling-banks/Penhesgyn-Household-Waste](http://www.anglesey.gov.wales/en/Residents/Bins-and-recycling/Recycling-centres-and-recycling-banks/Penhesgyn-Household-Waste)

☎ Waste Management  
 01248 752093



- **Mobile banking:** NatWest appears to be alone among the main banks in providing a mobile banking service.

'A Mobile Branch is a bank which comes to you and allows you to do all your usual everyday banking, like making deposits, withdrawing cash and paying bills.'

A Mobile Branch visits Beaumaris and Menai Bridge every week:

- **Beaumaris:**  
 Castle Square  
 LL58 8DA  
 Wednesday 10.30am-11.15am
- **Menai Bridge:**  
 Wood Street car park  
 LL59 5QW  
 Wednesday 3.35pm-3.55pm

☑ A directory for your local banking services  
[www.natwest.com/banking-with-natwest/other-ways-to-bank-with-natwest-banking-me.html#mb](http://www.natwest.com/banking-with-natwest/other-ways-to-bank-with-natwest-banking-me.html#mb)



- **Mobile Post Office:** The Post Office provides a mobile service across Anglesey, and makes the following weekly local stops at Llanddona and Llandegfan:

- **Llanddona:**  
 Neuadd Bentref Llanddona  
 Village Hall  
 LL58 8TS  
 Tuesday 2.30pm-3.00pm

Maes Gwyn  
 LL58 8TP  
 Tuesday 3.05pm-3.30pm

- **Llandegfan:**  
 Bro Llewelyn  
 LL59 5UP  
 Tuesday 3.45pm-4.15pm  
 Maes Ffynnon  
 LL59 5PS  
 Tuesday 4.15pm-4.45pm

All the usual services are available.



Visit Maesgeirchen Mobile Post Office's Facebook page for up-to-date information about the mobile Post Office service.

☑ Maesgeirchen Mobile Post Office  
[www.facebook.com/people/Maesgeirchen-Mobile-Post-Office/100057490246225/](https://www.facebook.com/people/Maesgeirchen-Mobile-Post-Office/100057490246225/)



**Beaumaris**

- **Clwb Bowlio Beaumaris Bowling Club:** Clwb Bowlio Beaumaris Bowling Club will be fielding eight teams again this year, in five different Leagues, and would like to welcome new members, young or old, male or female.

The Club is at Happy Valley, by the beautiful Beaumaris Castle.

For more information and/or a taster session please contact Dave Mathias, Secretary.

✉ [davemathias49@gmail.com](mailto:davemathias49@gmail.com)

☎ 01248 490222, 07712 121147

☑ Beaumaris Bowling Club  
<https://beaumarisbowlingclub.yolasite.com/>

☑ Beaumaris Bowling Club  
[www.facebook.com/people/Beaumaris-Bowling-Club/100063490482942/](https://www.facebook.com/people/Beaumaris-Bowling-Club/100063490482942/)

Read more about the Club's recent activities on page 21.

- **Clwb Rhwyfo Beaumaris Rowing Club:** there's a long history of competitive rowing on the Menai Strait.

The Club runs taster events during April and September for people to learn about, and have a go at, rowing a Celtic Longboat. It doesn't matter if you've never rowed before; we'll show you the ropes.

Please contact Rachael Robins, Recruitment Officer, if you are interested.

✉ [robins.rach@gmail.com](mailto:robins.rach@gmail.com)

Read more about the Club's recent activities on page 23.

- **Beaumaris Rotary:** since its launch in February 2022, Beaumaris Rotary has established a highly successful 'Autumn Arts' event.

Last year it raised £1,000 for Beaumaris RNLI, organised a dog show in support of the Guide Dogs and Hearing Dogs charities, officiated in local fireworks celebrations and volunteered as marshals for various Anglesey sporting events.

Beaumaris Rotary also enjoyed a number of social events, including a boules competition with other Rotary clubs and a traditional celebration of Burns night:

- **Autumn Arts 2023:** is scheduled to take place on 4-8 October.

The programme will be announced shortly, and there'll be more information in [The Puffin](#) 45.

All Beaumaris Rotary news can also be found on our new Facebook page.

☑ Beaumaris Rotary  
[www.facebook.com/beaumarisrotary/](https://www.facebook.com/beaumarisrotary/)

See also page 24.

- **H'Artworks:** Anne Snaith is 'Artist in Residence' at the Bulkeley Hotel, Castle Street, Beaumaris.

Go to page 5 to read about the workshops that Anne runs.

[www.seiriolalliance.co.uk/newsletters/](http://www.seiriolalliance.co.uk/newsletters/)

Hello...I'm Anne Snaith; I'm 'Artist in Residence' at the Bulkeley Hotel, Castle Street, Beaumaris, where I run a variety of workshops and much more besides.

There are lots of exciting new things planned for 2023. These include spring and summer special offers on group bookings.

I will also be running short residential courses with the Bulkeley Hotel, with accommodation and food at a discounted rate.

**Tuesdays**  
4.30pm-5.30pm

**Children's Art Club for ages 7-12:** the cost is £15.00 per head, and includes professional tuition in a wide variety of media. Running now; contact me for more details.

**Wednesdays**  
1.00pm-3.00pm

**Watercolours for beginners:** it's fun and friendly, and a block of ten sessions costs £150.

Each session is 'standalone', so people can join later and create a picture each session.

If you are late joining the course, fees will be adjusted accordingly.

Places are still available.

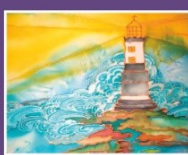


H'Artworks  
Gallery & Workshops

RESIDENT AT THE BULKELEY HOTEL

# THE ART STUDIO

Available all year round for  
Workshops, Classes, Clubs and more



BOOK A WORKSHOP/REGISTER FOR A CLASS  
VIEW PAINTINGS/BUY MATERIALS

for more information please contact Anne on  
01248 810631 or 07531 384434, or e-mail  
hartworks@btinternet.com

Available all year round, except Sundays

**Thursdays**  
1.00pm-3.00pm

**Watercolours for intermediates:** it's fun and friendly, and a block of ten sessions costs £150. Each session is 'stand alone', so people can join later and create a picture each session.

If you are late joining the course, fees will be adjusted

accordingly. Places are still available.

**Thursdays**  
4.30pm-5.30pm

**Young People's Art Group for ages 12-18:** The cost is £15.00 per head, and includes professional tuition in a wide variety of media.

Materials are included.

Restarted and currently running with some places still available.

**Fridays**  
1.00pm onwards

**One-to-ones:** spaces are available for one-to-one private tuition in 1- or 2-hour blocks to suit.

There will be updates on the Facebook page, with more details nearer the time

**For more information...**

Look out for information on social media, such as Facebook and Instagram.

For more information or to book a place please contact me, Anne Snaith:

☎ 01248 810631 or  
07531 384434

✉ hartworks@btinternet.com

🌐 www.facebook.com/  
anne.snaith.1

- **Beaumaris Film Night:** put the first Thursday of every month in your diary! Have a look below at what's coming this summer.

Refreshments are available from 7.00pm; the film starts at 7.30pm. Tickets are still just £5 each, and are available in advance from reception, or telephone to book.

☎ 01248 811200

**4 May:** *The Lost King*, a real-life comedy drama, as an amateur historian butts heads with archaeologists over the final resting place of Richard III.

**1 June:** *Mr Jones*, in which a Welsh journalist (James Norton) travels

travels deep into Stalin's Soviet Union to uncover an international conspiracy.



**6 July:** *Brian and Charles:* a lonely inventor creates an AI robot from unwanted objects at his rundown Welsh cottage in this unique comedy.

**3 August:** *AfterSun*, an emotional father-daughter drama set in Turkey in the 1990s, starring Paul Mescal and Frankie Corio.

Volunteers are always welcome at Beaumaris Film Night; please contact Stephen Marsden to find out more.

☎ 07774 699685

- **Beaumaris Over 50's Club:** Club meetings take place at 2.00pm on the last Monday of the month at:

The Iorwerth Rowlands Centre  
Steeple Lane  
Beaumaris  
LL58 8AE

We extend a warm welcome to new



puffinpages@gmail.com

## ABC Service Station

Gallows Point, Beaumaris, Anglesey LL58 8YH

☎ 01248 810359

🌐 www.facebook.com/ABC-Service-Station-947345708674543/

Thank you, ABC Service Station, for supporting **The Puffin**



and old members.

Put these dates in your diary!

**22 Mai/22 May:** Canu er Pleser/Singing for Pleasure

**26 Mehefin/26 June:** Canwyr a Te Mefus/ Guitarists and Strawberry Tea

**Gorffennaf, Awst/July,**

**August:** cyfnod gwyliau/ holiday period

For more details and bookings, please contact Mike Davies (Chair).

☎ 01248 812157,  
07483 827069

✉ [dmikedmail@gmail.com](mailto:dmikedmail@gmail.com)

- **Canolfan Hamdden Beaumaris Leisure Centre:** There's so much happening at Canolfan Beaumaris!

Go to our centre-spread on pages 14-15 to see what's going on, and keep up-to-date via social media.

📍 Canolfan Hamdden Beaumaris Leisure Centre  
Rating Row  
Beaumaris  
Anglesey  
LL58 8AL

☎ 01248 811200

✉ [enquiries@canolfanbeaumaris.org.uk](mailto:enquiries@canolfanbeaumaris.org.uk)

🌐 Canolfan Beaumaris  
[www.canolfanbeaumaris.org.uk/](http://www.canolfanbeaumaris.org.uk/)

🌐 Canolfan Beaumaris  
[www.facebook.com/canolfan.beaumaris.7/](http://www.facebook.com/canolfan.beaumaris.7/)

- **Seiriol Alliance:** if you live in the Seiriol Ward area (Beaumaris, Llandegfan, Llanddona, Llanfaes, Llangoed, Llansadwrn and Penmon) the Seiriol Good Turn Scheme may be able to help you.

The services offered by the Scheme are delivered by volunteers and offer help to any person living in the Seiriol Ward who, due to illness, incapacity or some other need, may benefit from the help available.

If you feel that the Scheme could be helpful for you please telephone us and we will arrange a home visit to discuss your needs.

☎ 01248 305014  
Monday-Friday  
9.00am-5.00pm

# Nan's Place

17 Margaret Street, Beaumaris LL58 8DN

• for all your sewing needs •

Tuesday: 10.00am-4.30pm

Wednesday: 10.00am-1.00pm

Thursday, Friday, Saturday: 10.00am-4.30pm



• fabrics •

- knitting yarns and patterns •
- haberdashery •
- alterations and repairs •

01248 811287  
07788 727942

- **Capel y Drindod,** Chapel Street, Beaumaris LL58 8DS:  
Gwasanaethau Sabathol pob bore Sul, 10.00yb (ond am 21 Mai, 9 Gorffennaf, 16 Gorffennaf: 11.15yb).  
Croeso cynnes i bawb.  
Services each Sunday at 10.00am (except 21 May, 9 July, 16 July: 11.15am).  
Visitors would be most welcome.
- **Beaumaris Makers Market:** Castle Square, Beaumaris LL58 8AL (in front of the Castle Court Hotel, and adjacent to the castle).  
Here are the 2023 dates from May onwards; all times are 10.00am-4.00pm:  
May: 14, 28, 29  
June: 25  
July: 1, 9, 29, 30  
August: 5, 6, 12, 20, 26, 27  
September: 3  
October: 22  
November: 26  
December: 10  
🌐 Beaumaris Makers Market  
[www.facebook.com/beaumarismakersmarket](http://www.facebook.com/beaumarismakersmarket)
- **Beaumaris Artisan Market:** Rating Row, Beaumaris LL58 8AP (in front of the David Hughes Community Centre).

It's open every Sunday until the end of October, 10.00am-4.00pm.

✉ [beaumariswelshartisanmarket@outlook.com](mailto:beaumariswelshartisanmarket@outlook.com)

🌐 Beaumaris Artisan Market  
[www.beaumarisartisanmarket.blogspot.com](http://www.beaumarisartisanmarket.blogspot.com)

- **Beaumaris Victorian Christmas Weekend:** make a note in your diary, because plans are afoot!

It's early days yet, but there will be more information in **The Puffin** 45 (August) and in social media.

## Llanddona

- **Neuadd Bentref Llanddona Village Hall:** we are a small and dedicated group of Committee Members and volunteers, and we'd love to welcome more people on board!

Please contact us if you would like to become involved in any way.

The Hall is available for hire. Please contact us if you would like more information or to make a booking.

✉ [secretary@neuaddbentrefllanddona.co.uk](mailto:secretary@neuaddbentrefllanddona.co.uk)

☎ 07733 176004 or 07768 018370

📍 Neuadd Bentref Llanddona Village Hall  
Llanddona  
Anglesey  
LL58 8TS

🌐 Neuadd Bentref Llanddona Village Hall  
[www.facebook.com/llanddona\\_villagehall/](http://www.facebook.com/llanddona_villagehall/)

🌐 Cymuned Llanddona Community  
[www.facebook.com/groups/llanddona/](http://www.facebook.com/groups/llanddona/)

Read more about the Hall and recent activities on page 17.

- **Y Man Cyfarfod/The Meeting Place:** every Tuesday, 1.00pm-4.00pm, at Neuadd Bentref Llanddona Village Hall. It's the place to meet friends, enjoy a paned and biscuits, join in a hand of whist or something else.
- **Paned a Sgwr:** every Tuesday, 1.00pm-4.00pm, at Neuadd Bentref Llanddona Village Hall.

Improve your Welsh-speaking skills with this small, friendly group over a

[www.seiriolalliance.co.uk/newsletters/](http://www.seiriolalliance.co.uk/newsletters/)

complimentary paned/cuppa and biscuits. All levels of Welsh speakers are welcome.

Sessions are informal so that people can 'drop in' for a quick chat or stay for the full session if preferred.

For more information contact Gillian Vaughan.

☎ 07925 184476

- **Caffi Ni:** every Friday, 11.45am-2.00pm, Neuadd Bentref Llanddona Village Hall.

Come and enjoy a home-cooked two-course meal and a drink in a relaxed and friendly atmosphere for only £8 per person. A special roast chicken dinner is available on the first Friday of every month.

All food is freshly prepared on the premises by volunteers.

- **Caffi Cofio:** the first and third Wednesdays of the month, 2.00pm-4.00pm, Neuadd Bentref Llanddona Village Hall.

Caffi Cofio is provided by Carers Trust North Wales Crossroads Care Services. It's a friendly service for people who live with memory loss, and their carers.

Transport to and from the group can be arranged, organised by the Seiriol Good Turn Scheme for a small fee.

Please telephone for more information or to book a place.

☎ 01492 542212

- **Gong Bath:** the first Tuesday of the month, starting 7.00pm, Neuadd Bentref Llanddona Village Hall: relaxation and meditation through sound...

Lying on a mat, you close your eyes and relax for an hour whilst being bathed in powerful sound waves.

Please contact me, Steph Healy, for more information or to book a place.

☎ 07534 118899

✉ [pure.sound@outlook.com](mailto:pure.sound@outlook.com)

🌐 [www.puresound.org.uk](http://www.puresound.org.uk)

- **Spring Fun Dog Show and Spring Fair:** Saturday 27 May, Neuadd Bentref Llanddona Village Hall. Entry is free.

There will be produce stalls, crafts, artisan crafts, food, drink and cakes... and the Fun Dog Show, of course!

The Fun Dog Show details were under preparation at the time of going to print, so make sure that you keep your eyes open for information and updates...and start brushing up your dogs' tricks!

- **Prize Bingo:** Thursday 22 June, Neuadd Bentref Llanddona Village Hall.

Prizes will include a cash prize. Entry is free and a bar and pizza will be available.

- **Free guitar lessons:** Monday evenings, Neuadd Bentref Llanddona Village Hall:

Under 10s: 5.30 pm  
11+ years: 6.00pm

You don't have a guitar? That's no problem; we have some available for use in the classes.

Please contact Miriam Williams for more information.

☎ 07733 176004

- **Clwb Ffermwyr Ifanc Llangoed/ Llangoed Young Farmers Club:** meets every Monday, 7.45pm, at Neuadd Bentref Llanddona Village Hall (not Llangoed!).

Read more about its activities on page 22.

- **Llanddona Table Tennis Group:** every Monday at Neuadd Bentref Llanddona Village Hall, 10.00am-12.00 noon.

Please contact Kirsty Simpson if you're interested.

✉ [kirstyalisonsimpson@hotmail.com](mailto:kirstyalisonsimpson@hotmail.com)

- **Llanddona Writers Group:** thinking of a family memoir, or short story, or just the chance to do a little writing alongside friends?

The Group meets every three weeks on a Friday at 11.00am.

We enjoy hearing from and encouraging each other, and maybe having a try at something new.

Why not come along and see...

If you'd like to know more, please contact Stephen Marsden.

☎ 07774 699685.

See also page 10.

- **Village Knit Club:** every Monday at the Owain Glyndŵr, Llanddona, at 7.15pm-8.45pm.

Looking forward to seeing you all!



For more information contact Meg Marsden.

☎ 07913 223435

- **The Owain Glyndŵr:** there's always a lot happening at the Owain Glyndŵr.

Contact us for information about what's on:

☎ 01248 810710

📍 The Owain Glyndŵr  
Llanddona  
Anglesey  
LL58 8UF

✉ [contact@ogdllanddona.co.uk](mailto:contact@ogdllanddona.co.uk)

📱 Cymuned Llanddona Community  
[www.facebook.com/groups/llanddona/](https://www.facebook.com/groups/llanddona/)

- **Llanestyn Tractor Rally 2023:** will take place on 19 August, so be sure to keep your eyes on social media, noticeboards and August's number of **The Puffin**.

### Llangoed

- **Llangoed Village Hall:** Llangoed Village Hall is available for parties, functions and weddings.



Please contact us for further information or to make a booking.

✉ [llangoedvillagehall@gmail.com](mailto:llangoedvillagehall@gmail.com)

Keep an eye on our Facebook page for more details.

🌐 [www.facebook.com/llangoed.villagehall](https://www.facebook.com/llangoed.villagehall)

- **Seiriol Men's Shed:** we meet on Tuesdays and Thursdays, 10.00am-1.00pm, in our workshop adjacent to Haulfre Residential Home, Llangoed.

To find us from the direction of Beaumaris:

- Go through Llangoed, past Morrisons Daily on the right, and down the hill



## Beaumaris Town Council

Town Hall, Castle Street, Beaumaris, Anglesey LL58 8AP

☎ 01248 810317

✉ [beaumaristowncouncil@tiscali.co.uk](mailto:beaumaristowncouncil@tiscali.co.uk) 🌐 [www.beaumaristowncouncil.gov.uk/](http://www.beaumaristowncouncil.gov.uk/)

Thank you, Beaumaris Town Council, for supporting **The Puffin**



- o Go over the little bridge at the bottom and up the hill for about 200 yards
- o Turn right at the *Gerddi Haulfre Gardens* sign into the Haulfre Residential Home car park Park and walk down the slope (a right-hand course if you're facing Haulfre) towards the gardens
- o Our premises are very close; our large workshop is on the left, and our other premises are on the right.

PS: it's men only!...and please park thoughtfully; the car park is used by others as well.

For more information please contact:

☎ Mike Thomas 07941 103386

☎ Steve Jones 07368 219048

See also page 19.

- **Llangoed Knitting Club:** we meet at the Pont y Brenin Hub on the third Monday of the month, 2.00pm-4.00pm.

Please contact Elizabeth Roberts, Bodwyn, Llangoed LL58 8NP if you'd like to join us.

- **Llangoed WI:** we meet on the first Wednesday of the month in Llangoed Village Hall; meetings begin at 2.00pm.

We're a lively group of mixed ages, so, ladies, do feel welcome to join us.

See also page 21.

- **Llangoed Flower and Vegetable Show:** 8 July, at Llangoed Village Hall. Put the date in your diary!



Entries by 4 July, please. Visit our website for more information.

📄 Sioe Flodau Llangoed Flower Show  
[www.llangoedflowershow.com](http://www.llangoedflowershow.com)

✉ [julie@plasbodfa.com](mailto:julie@plasbodfa.com)

📄 Plas Bodfa  
Llangoed  
Anglesey  
LL58 8ND

📄 Sioe Flodau Llangoed Flower Show  
[www.facebook.com/groups/sioeflodauallangoed](http://www.facebook.com/groups/sioeflodauallangoed)

### Llansadwrn

- **National Garden Scheme:** see the *National Garden Scheme 2023* (NGS)

information below for details of open gardens in Anglesey and Gwynedd.

Nearer home, there are two NGS open gardens in Llansadwrn:

- o Arcady, Llansadwrn LL59 5SE: 9 July, 11.00am-4.00pm. Tea and cakes; plant stall, including mature plants, such as bonsai and Birds of Paradise.
- o Bodlwyfan, Llansadwrn LL59 5SN: details not known, but NGS open gardens are always worth visiting.

Proceeds go to medical charities as organised by the NGS.

### NATIONAL GARDEN SCHEME IN WALES 2023

Rebecca Andrews

The National Garden Scheme (NGS) has many wonderful gardens open this year, including several new gardens; please see the yellow cut-out-and-keep panel to the right.

Through the generosity of private garden owners who open their gardens to the public the NGS raised over £3.1 million for nursing and health charities last year. This is distributed to Macmillan Cancer Support, Marie Curie, Hospice UK, Carers Trust, The Queens Nursing Institute, Parkinson's UK and many more.

Many local health and nursing charities across Gwynedd and Anglesey benefit directly from every visit you make, and our donations are becoming increasingly important to them.

We're hoping for even bigger and better results this coming year, but this can be achieved only with the kind support of visitors...so please invite your family and friends to join you on your garden visits.

Many gardens provide tea and cake, and are also dog friendly\*.

Look out for the yellow booklets that are circulating, or simply visit [www.ngs.org.uk](http://www.ngs.org.uk) and click on the *Find a garden* link. This allows you to find gardens according to date and location.

The Gwynedd and Anglesey NGS Facebook page also showcases garden openings in the run up to the full NGS openings.

You could also consider visiting our gardens that 'open by arrangement' throughout the year: Crowrach Isaf, Gilfach, Llys-y-Gwynt and Tŷ Cadfan Sant.

It's such an easy way to provide a lovely trip out for any group, family friends or social. A phone call to the garden owner is all that's required to arrange a visit.

\* For more information and detailed directions to all the open gardens listed,

## NGS Open Gardens 2023 May-September

- ☼ Sunday 7 May  
Maenan Hall, Llanrwst LL26 OUL  
**NEW** Trefnant Bach, Anglesey Bees, Gaerwen LL60 6ET
- ☼ Sunday 14 May  
Gardd y Coleg, Carmel LL54 7RL  
Tŷ Capel Ffrwd, Dolgellau LL40 2NR
- ☼ Saturday 20 May  
Glan Llyn, Llanberis LL55  
Gwaelod Mawr, Caergeiliog LL65 3YL
- ☼ Sunday 21 May  
Gwaelod Mawr, Caergeiliog LL65 3YL  
Llys-y-Gwynt, Llandygai LL57 4BG
- ☼ Sunday 28 May  
Cae Newydd, Rhosgoch LL66 OBG
- ☼ Sunday 4 June  
Pensychnant, Conwy LL32 8BJ  
Sunningdale, Bull Bay LL68 9SD
- ☼ Saturday 17 June  
Crowrach Isaf, Bwlchtocyn LL53 7BY
- ☼ Sunday 18 June  
Crowrach Isaf, Bwlchtocyn LL53 7BY
- ☼ Saturday 24 June  
Gwyndy Bach, Tynlon LL65 3AJ  
Llanidan Hall, Brynsiencyn LL61 6HJ  
**NEW** Llwydiarth, Mynytho LL53 7RW
- ☼ Sunday 25 June  
**NEW** Llwydiarth, Mynytho LL53 7RW
- ☼ Saturday 1 July  
Sunningdale, Bull Bay LL68 9SD
- ☼ Saturday 8 July  
Llanidan Hall, Brynsiencyn LL61 6HJ
- ☼ Sunday 9 July  
Arcady, Llansadwrn LL59 5SE  
Pensychnant, Conwy LL32 8BJ  
Tŷ Cadfan Sant, Tywyn LL36 9DD
- ☼ Saturday 22 July  
**NEW** Rhoslan, Garreglwyd LL74 8RG
- ☼ Sunday 30 July  
Maenan Hall, Llanrwst LL26 OUL
- ☼ Sunday 26 June  
Gwyndy Bach, Tynlon LL65 3AJ
- ☼ Sunday 6 August  
Gilfach, Rowen LL32 8TS
- ☼ Saturday 9 September  
**NEW** Trefnant Bach, Anglesey Bees, Gaerwen LL60 6ET
- ☼ Sunday 10 September  
**NEW** Bodlwyfan, Llansadwrn LL59 5SN
- ☼ Saturday 16 September  
Treborth Botanic Garden,  
Bangor University LL57 2RQ
- ☼ Sunday 17 September  
Gardd y Coleg, Carmel LL54 7RL
- ☼ Sunday 24 September  
Llys-y-Gwynt, Llandygai LL57 4BG

Read more about the NGS on this page

Check the full details at  
[www.ngs.org.uk](http://www.ngs.org.uk)

✂ cut out and keep!

[www.seiriolalliance.co.uk/newsletters/](http://www.seiriolalliance.co.uk/newsletters/)



we recommend that you visit the NGS website before you visit, for full and up-to-date information.

Croeso i'n gerddi yn y rhan syfrdanol brydferch hon o Gymru. Chwiliwch yn *Find a garden* am gerddi a dyddiadau fydd o ddi-ddordeb i chi. Dilynwch tudalennau Facebook Gwynedd a Môn NGS am fwy o wybodaeth am y gerddi fydd ar agor yn eich ardal leol.

Am fwy o wybodaeth a chyfarwyddiadau manwl i'r gerddi, ewch i'r wefan canlynol.

📧 National Garden Scheme  
[www.ngs.org.uk](http://www.ngs.org.uk)

📺 Facebook: Gwynedd and Anglesey NGS  
[www.facebook.com/gwyneddandangleseyngs/](http://www.facebook.com/gwyneddandangleseyngs/)



## DIWEDDARIAD EGLWYS LLANDDONA 2023

Lucy Low

**Eglwys Sant Iestyn** Erbyn i'r rhifyn hwn o *The Puffin* gael ei gyhoeddi fe ddylai cam cyntaf gwaith atgyweirio ac adfer yr Eglwys fod wedi ei gwblhau, yn dibynnu



Gwaith ar y gweill yn yr Eglwys Sant Iestyn Work is under way at St Iestyn's Church (Lucy Low)

ar y tywydd! Dechreuodd y gcontract ar 20 Mawrth ac amcangyfrifwyd y byddai'n cymryd 4-6 wythnos. Mae'r gwaith adfer anhygoel hwn i ddiogelu ein hadeilad hardd a'i gadw ar agor wedi bod yn bosibl diolch i gefnogaeth y gymuned leol. Ewch gefnogi ac edrych ar ein cynnydd

**Eglwys Sant Dona** Dechreuodd y tymor 'champing' ar 1 Ebrill. Bu llawer o sylw cadarnhaol yn y wasg, ac rydym yn falch

## BEAUMARIS TOURIST INFORMATION CENTRE

Did you know that Beaumaris's Tourist Information Centre is the only one on Anglesey?

We're proud of the service that we provide, and will be reopening soon for the summer. We're in the entrance foyer at the beautiful Town Hall in Castle Street, Beaumaris LL58 8AP.



You'll find a wide range of leaflets and other information to meet all your needs, whether you're a tourist or a local resident. We have some new information leaflets for 2023, and are expecting more soon.

We're open between 10.00am and 4.00pm every day. We're unstaffed in the winter, but over the summer we try to have volunteers at the Centre every day.

We have a small group of enthusiastic volunteers, but we do need more helpers. We're looking for people to do regular shifts, 11.00am-1.00pm or 1.00pm-3.00pm, one day a week, or to help in other ways. Training will be given.

If you're interested in volunteering, please contact me, Gwen Richards, on [gwenrichardsuk@yahoo.com](mailto:gwenrichardsuk@yahoo.com), or leave a message on the Centre's desk.



iawn mai dyma'r unig eglwys i gynnig 'champing' yng Nghymru. Mae'r Eglwys hefyd ar gael ar gyfer cyfarfodydd; mae posibilïadau diddiwedd i grwpiau ddefnyddio'r adeilad gyda'i leoliad unigryw ar lan y môr.

Ceir gwasanaethau rheolaidd yn y ddwy

eglwys. Cysylltwch â mi, Lucy Low, am fwy o wybodaeth.

☎ 07774 472511



## LLANDDONA CHURCH UPDATE 2023

Lucy Low

**Church of St Iestyn** By the time this edition of *The Puffin* is published the first phase of the Church's repair and restoration should have been completed, depending on the weather! The contract commenced on 20 March and was estimated to take 4-6 weeks. This amazing restoration work to preserve our beautiful building and keep it open has been made possible thanks to the support of the local community. Please do visit, support and check out our progress.

**Church of St Dona** The champing season started on 1 April. There has been a lot of positive press coverage, and we are very proud that it is still the only church to offer champing in Wales. The Church is also available for meetings; there are endless possibilities for groups to use the building with its unique beachside location.

There are regular services in both churches. Please contact me, Lucy Low, for more information.

☎ 07774 472511

## CHESS: THE MECHANICAL TURK

Fianchetto 66

Chess No 3 is overleaf...

Contact sports came to an end almost overnight in early 2020 with the onset of the COVID pandemic. This was in marked contrast to chess, classed as a mind sport, which saw an incredible 400% increase in games played on-line during lockdown, thanks to one's ability to be at arm's length from one's opponent.

The intertwined relationship between the Royal Game and technology dates back much further than this, though, according to the school of thought that believes that the creation of the first computer was directly inspired by the 64-square pastime.

In the late 18<sup>th</sup> century an intriguing device known as The Mechanical Turk began to tour Europe.

## Canolfan Beaumaris

A not-for-profit Social Enterprise Business supporting the community since 2013

Thank you, **Canolfan Beaumaris**, for supporting **The Puffin**

Rating Row, Beaumaris, Anglesey LL58 8AL • ☎ 01248 811200

✉ [enquiries@canolfanbeumaris.org.uk](mailto:enquiries@canolfanbeumaris.org.uk) • 🌐 [www.canolfanbeumaris.org.uk/](http://www.canolfanbeumaris.org.uk/)



**Across**

- 1 Stop (4)
- 3 Drapes (8)
- 9 Seawater lakes (7)
- 10 Two-legged animal (5)
- 11 Fish respiratory features (5)
- 12 Do more than necessary (6)
- 14 Naked interest (6)
- 16 Guitar maker (6)
- 19 Not at work (6)
- 21 Student (5)
- 24 Player (5)
- 25 Bending (7)
- 26 Deify (8)
- 27 Reinsert an erased mistake (4)

It was effectively a mechanical illusion with a human operator, and appeared to those who witnessed its operation to be an automaton capable of besting all comers at the game of chess.

By 1819 a youthful Charles Babbage encountered the Mechanical Turk at a museum in London. Even though he had worked out that the Mechanical Turk had a human operator, it inspired him to wonder if a genuine chess playing machine could be devised.


Many argue that this resulted in his eventual creation of the mechanical Difference Engine, then the Analytical Engine in the early Victorian era: although still mechanical, it contained all the essential ideas of modern computing.

One of the most interesting and memorable games played by The Mechanical Turk took place at the Schönbrunn Palace in Vienna in 1809, when the Mechanical Turk defeated Napoleon. The operator on this occasion was an Austrian Chess Master by the name of Johann Allgaier.

Chess no 3 depicts the position near the end of this historic game, with black about to play. Your challenge is to work out the two moves that followed, which resulted in victory for the Mechanical Turk over the French Military Commander.

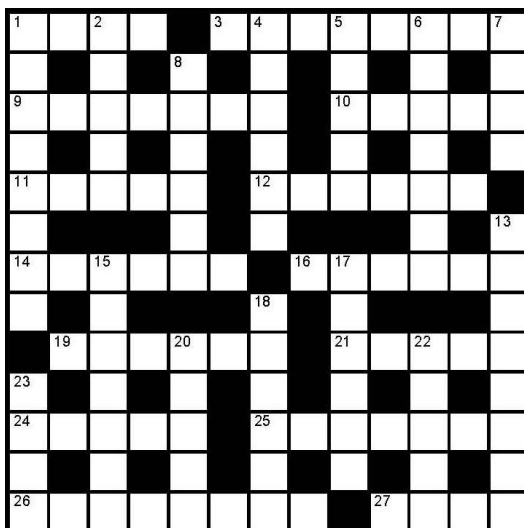
**Footnote** If I've piqued your interest, read Tom Standage's book, *The Mechanical Turk: The True Story of the Chess-Playing Machine that Fooled the World*.

It gives an entertaining account of the antics of the Mechanical Turk at a time when knowledge was progressing quickly and engineering the casually miraculous was becoming almost an everyday event.

 Mechanical Turk  
[https://en.wikipedia.org/wiki/Mechanical\\_Turk](https://en.wikipedia.org/wiki/Mechanical_Turk)

**THE GOVERNOR'S QUICK CROSSWORD**

**NO 12**



**Down**

- 1 Monovalent non-metallic element (8)
- 2 Allowed (5)
- 4 Result (6)
- 5 List (5)
- 6 Prevented movement (7)
- 7 Team (4)
- 8 Roof beams (6)
- 13 Bright illumination (3,5)
- 15 Argumental discussions (7)
- 17 Look forward to (6)
- 18 Stress (6)
- 20 Mistake (5)
- 22 Produce art (5)
- 23 Regain consciousness (4)

**FIELD WARFARE**

Stephen Marsden, Llandona Writing Group

Thinking smugly back to his recent season playing Hamlet at Stratford, Edward Barry sat back easily in the little leather armchair he favoured when he sat out in the garden of his rural retreat, his hideaway Welsh cottage.

It was a day he imagined Roy Harper must have been conjuring up in composing the patriotic idyll of 'One of those Days in England', insects buzzing in the balmy August air, birds twittering in the man-high back hedge that shielded him from possible contact with the farmer who owned the adjoining field.

Pushing his Ray-Bans to the bridge of his patrician nose (he'd always enjoyed rereading that particular review in the *Telegraph* after he was knighted), he poured wine into an engraved glass from the bottle chilling in the ice bucket at his elbow. With no visitors scheduled to disturb his day, he looked forward to some glorious hours in just the company of the medieval history his antiquarian friend had singled out for him.

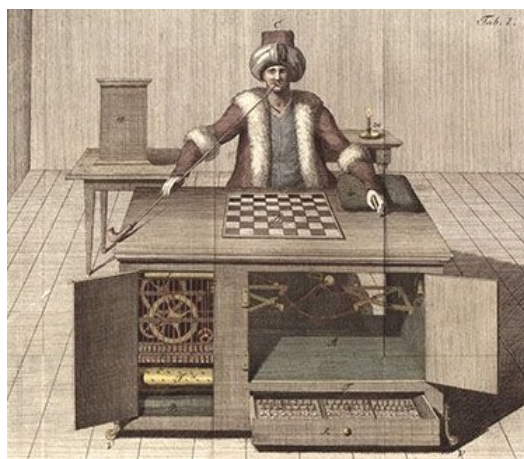
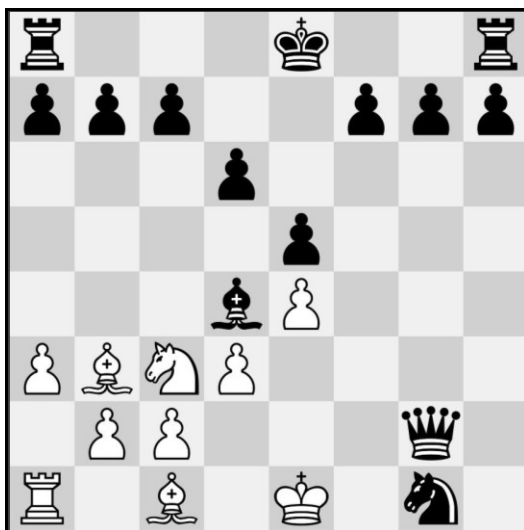
As if on cue, he grumbled to himself, the noise of a tractor with something heavy in tow came thumping its way towards him. Strange, he thought, that field has been nothing but grass for years, periodically enlivened by the small herd of cows the farmer kept grazing up his end of the field.

Irritably, he rose from his chair towards the hedge to see if he could peep at whatever was happening. Not ten yards from the hedge, he saw a tractor cab heading his way suddenly swing to its right, parallel to the hedge, and almost immediately stop.

For a few seconds, Edward could not quite take in the image before him. There, half the width of his garden, stood the top of a cream-coloured caravan. But not just a caravan, he realised, but one they


[www.seiriolalliance.co.uk/newsletters/](http://www.seiriolalliance.co.uk/newsletters/)

**FIANCHETTO 66's CHESS NO 3**



The Mechanical Turk (public domain)

There's another puzzle on the next page.

 The Mechanical Turk: AI Marvel or Parlor Trick?  
[www.britannica.com/story/the-mechanical-turk-ai-marvel-or-parlor-trick](http://www.britannica.com/story/the-mechanical-turk-ai-marvel-or-parlor-trick)

 The Turk – Automaton Chess Player (World's First Chess Robot)  
[www.chessjournal.com/the-turk/](http://www.chessjournal.com/the-turk/)

called something else, one long enough to have several windows along its side.

There were no theatrics in the way he stepped back in shock, almost stumbling as he did. His mouth opened of its own accord, his mind racing at what he took to be happening. That damned farmer, without so much as a word, turning over the quiet beauty of the village to some mobile home development.

His mind and mouth running ahead of him, he shouted angrily over the hedge. "Hey! What's going on over there?"

"What does it look like, eh?" came a gruff voice in reply, almost mockingly. "Don't they allow people with caravans in your part of the world? Or you got some objection to people making an honest living, and giving you town folk a taste of the country? Seems you could hardly object to that..."

Taking a breath, but unbowed, Edward pulled himself up to his full height and projected his reply with all his professional experience.

"And where would you be without us 'town folk', to use your delightful turn of phrase? Seems you're rather desperate to have them around, wouldn't you say? Particularly if you are no longer fully able to term yourself a farmer, as we see..."

Edward's final words never even carried to his own ears as his newfound conversationalist gunned his tractor and turned his cab back towards his farm, leaving a 60 foot reminder of their first real exchange to colour his thoughts.

After his last performance back on stage, he'd received a standing ovation and a magnificent bouquet of flowers from the rest of the cast. Today, all thoughts of his career somehow sunk to nothing, he felt himself yearning instead for the everyday creature comforts of his youth – a bag of chips and a bottle of brown ale...

## WYNA YN LLANDDONA

Tomos Griffiths

Treuliais fy ngwyliau hanner tymor yn ein sied yn helpu Mam a Dad. Mae fy holl amser sbâr ar wahân i'r ysgol, rhedeg, hoci, pêl-droed a sglefrio roler yn cael ei ddefnyddio yn ein sied. Mae gan y tri ohonon ni wisg i'r sied.

Daw ein mamogiaid croes mewn i'r sied ym mis Ionawr ac fe'u sganir gan Dewi

## DEBBIE'S ALPHANUMERICA NO 1

Not content with taxing the reader's brain with crosswords and chess, **The Puffin** is adding Debbie Oulton's *Alphanumeric* to its armoury.

It's likely to be a quarterly regular, so keep your eyes skinned...

An example: **7 D in a W** is **7 Days in a Week**.

Puzzle solutions are on page 26.

- 1 7 C in a R
- 2 40 D in L
- 3 366 D in a LY
- 4 1 W on a W
- 5 206 B in the HB
- 6 29029 = H of ME above SL in F
- 7 3 S and YO in B (USA)
- 8 80 = D to G A the W (Lit)
- 9 11 P in a C T
- 10 1440 M in a D
- 11 12 N on a C
- 12 8 F in a M
- 13 99 = an IC with a F
- 14 1 SS for M = 1 GL for M
- 15 1 S under P is a B in G
- 16 4 S = S S A W
- 17 7 W of the AW
- 18 12 GM and T on a J
- 19 12 E in a D
- 20 3 G in a HT

Tyn Llwyn ar gyfer efeilliaid, senglau a tribleidi. Maen nhw'n cael eu twtio ar wely o wellt ac yn cael eu bwydo fore a



Yn yr heulwen gydag oen...  
In the sunshine with a lamb...  
(Tomos Griffiths)

nos. O fis Chwefror ymlaen rydyn ni'n cadw golwg. Mae Mam a Dad yn gorfod helpu lot o'r mamogiaid mawr i roi genedigaeth; gallent fod yn ôl, ymlaen neu ddim ond yn sownd plaen ond hyd yn hyn nid ydym wedi gorfod gwneud y

daith i'r milfeddygon ym Mona am cesaraid. Mae'r mamogiaid yn wynau olaf, sy'n hwyl gan eu bod yn gallu rhedeg yn gyflym iawn a dwi'n gallu jyst eu dal nhw.

Mae'r mamau newydd a'u hŵyn yn cael eu rhoi mewn corlannau i fondio a gwneud yn siŵr eu bod yn cael digon o laeth cyn troi allan yn y cae os yw rhagolygon y tywydd yn dda. Rydym wedi cael llwyth o dribledi eleni, sy'n golygu wŷn anifeiliaid anwes yr ydym yn ceisio eu meithrin; dwi'n helpu Mam i'w bwydo nhw bum gwaith y dydd.



Ein gwisg i'r sied  
Our uniform for the shed  
(Tomos Griffiths)

Mae'n andros o hwyl, ond gwaith caled, a Mam a Dad yn mynd yn orflinedig a sarrug, ond mae'n grêt eu gweld nhw allan yn y caeau yn rhedeg a neidio (yr ŵyn, nid Mam a Dad)!

Mae 'na hefyd dipyn o famogiaid Cymreig y tu allan hefyd, ond

peth da am y famogiaid Cymreig yw eu bod nhw'n wyna'n hawdd eu hunain. Rydyn ni'n eu gwirio nhw fore a nos; roedden nhw hyd yn oed yn wyna yn yr eira ac wedi goroesi, sy'n dangos pa mor galed ydyn nhw.



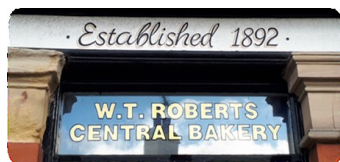
## LAMBING IN LLANDDONA

Tomos Griffiths

I spent my half term holiday in our shed helping Mum and Dad. All my spare time apart from school, running, hockey, football and rollerblading is used up in our shed. All three of us have a uniform for the shed.

Our crossbred ewes come into the shed in January and are scanned by Dewi Tyn Llwyn for twins, singles and triplets. They are tucked up on a bed of straw and fed morning and night. From February onwards we keep watch. Mum and Dad have to help a lot of the big ewes to give birth; they could be backwards, forwards or just plain stuck but so far we have not had to make the trip to the vets in Mona for a caesarean. The young ewes are due to lamb last, which is fun as they can run really fast and I can just about catch them.

The new mums and their lambs are put in pens to bond and make sure that they



Central Bakery specialises in artisan breads, homemade pies and pasties. There's always a delicious selection of freshly-baked produce from which to choose, whatever the season.

Thank you, Central Bakery, for supporting **The Puffin**

22 Margaret Street, Beaumaris, Anglesey LL58 8DN

☎ 01248 810386 🌐 [www.facebook.com/central-bakery-1544465662475012/](http://www.facebook.com/central-bakery-1544465662475012/)

get enough milk before turning out in the field if the weather forecast is good. We have had loads of triplets this year, which means pet lambs which we try to foster; I help Mum to feed them five times a day. It is really fun, but hard work, and Mum and Dad get over-tired and grumpy, but it's great to see them out in the fields running and jumping (the lambs, not Mum and Dad)!



Mam ac efeilliaid  
Mother and twins  
(Tomos Griffiths)

There are also quite a lot of Welsh ewes outside, but a good thing about the Welsh ewes is that they lamb easily themselves. We check them morning and night; they even lambed in the snow and survived, which shows how hardy they are.

## OUR ROBIN REDBREAST AND OTHER 'ROBINS' OF THE WORLD

Roz Hattey

A few early spring observations before focusing on robins. In fact, a robin does feature in the very early, rather than dawn chorus I heard in my garden in mid February, along with chaffinches and several excitable collared doves, which do breed very early in the year. In early February a red kite was again seen in Llanddona, flying low and being mobbed by jackdaws.

For two weeks, from late February to early March the loud, clear repeated phrases of the song-thrush have been ringing out every morning in the cold, grey dawn. An abundance of tiny young newts, or efts, had to be rescued from amongst the pond plants and blanket-weed we were thinning out in early February. Frogspawn arrived soon afterwards.

Twenty or thirty starlings have been ravenously feeding on sunflower seeds and fat-balls every morning, pushing off the finches. There is a large night roost of starlings near Pentraeth, with dazzling murmurations at dusk. They are dispersing now, in early March, to their nest sites across the island. The cock

pheasant has four hens, beautifully marked in buff and chestnut, pecking shyly amongst the tufty grasses, as he crows and flaps on the nearby bank and proudly displays his black 'ear-tufts'. Tawny owls, probably a pair, are calling to each other across my garden late in the evenings.

Back to robins. Rather unseasonal now, perhaps, but a biologist friend told me that my last article about the Thrush family sparked a lively debate with her husband, who is also a biologist. Should I have included the robin; isn't that also one of the thrushes? They checked it all out, as every good biologist does, and found that the robin had indeed once been thought to be a member of the thrush family, but after DNA analysis is now considered to be one of the 'chats'. These are small insectivorous birds belonging to the flycatcher family. There is a wide range of chat species across the world. Other chats seen in Britain and Ireland include the stonechat, whinchat, wheatear and nightingale.



'Our Robin Redbreast' (*Erithacus rubecula*)  
(© Francis C. Franklin 27 February 2014; [https://commons.wikimedia.org/wiki/File:Erithacus\\_rubecula\\_with\\_cocked\\_head.jpg#/media/File:Erithacus\\_rubecula\\_with\\_cocked\\_head.jpg](https://commons.wikimedia.org/wiki/File:Erithacus_rubecula_with_cocked_head.jpg#/media/File:Erithacus_rubecula_with_cocked_head.jpg))

However we classify it, Robin Redbreast, the European robin, *Erithacus rubecula*, is one of our most popular birds. It was even voted Britain's National Bird in 2015. It is, of course, easy to recognise and often seems to be very tame, suddenly appearing on the handle of our garden fork or on our picnic table. Free food must be the main attraction, with our gardening activities disturbing fallen leaves or turning over soil, making it easier for birds to find earthworms and other juicy invertebrates. In natural woodland habitats robins have often been seen to accompany deer and wild boar whose activities would also improve the birds' chances of finding invertebrates on the woodland floor.

Yet sometimes it's as if the robin wants to make sure that we look at it as it bobs and flutters almost under our feet or catches our eye from the nearest branch. I have sometimes felt that it is determined to demonstrate that it is the boss in this territory, not me! In fact, robins can be very aggressive towards

each other in territorial disputes, sometimes fighting to the death.

Perhaps this boldness, along with the bright red throat and breast, used for display in competition and in courtship, goes some way to explaining the fact that robins have long had a close association with people.

In British and European mythology the robin often features prominently. It was said to condemn Celts to death by fire if someone had killed one of its kind; it reputedly pierced its own breast with a thorn from Christ's crown; and in an 18<sup>th</sup> century nursery rhyme, the robin itself is killed by a sparrow and mourned by all the other forest birds.

Robins defend their territories throughout the year and in winter males and females hold separate territories. They sing most of the year, too. Studies have found that the tuneful and varied song has two distinct seasonal forms: in autumn it seems to be quite sad and wistful but around Christmas the song does actually become stronger and more vigorous. This uplifting change in mid-winter may also account for our having made robins so much part of our Christmas celebrations.

Robins appeared as clear symbols in the 19<sup>th</sup> century when decorative cards became popular and were delivered by Royal Mail 'posties' wearing red jackets. Sadly, robins were sometimes killed just so that their red feathers could be stuck onto Christmas cards.

Robins suffer in severe winter weather when food becomes difficult to find, so they benefit from our garden feeders, taking seeds and fruit, often from the ground where other more agile birds have been feeding over-head and dropped some food. In February I have been watching two robins battling to balance on hanging feeders containing peanuts and fat-balls.

In Britain and Ireland most robins stay local, not moving beyond about five kilometres. Some more northerly populations migrate to over-winter around the Mediterranean, but there they are often the victims of human hunters.

*The Life of the Robin* by David Lack remains a classic study. He wrote it when he was a schoolteacher in Devon and it was published in 1943. Little was known about the behaviour of the robin until David carried out his meticulous field studies. The book is still considered to 'represent the very best of accessible natural history writing' (BTO) and there have been four editions, the latest in 2016. David went on to become Director of the Edward Grey Institute of Field Ornithology at Oxford University from 1945 until his death in 1973. I still have a well-worn copy of *The Life of the Robin*

which was my mother's. Her family and David's were friends for many years.

During British colonial times, British people encountered many small birds across the world which reminded them in some way of the robin they were so familiar with at home. Sometimes it was the birds' behaviour more than their appearance which seemed similar to the robin's. It's extraordinary just how many birds, totally unrelated to Robin Redbreast, also became known as robins!



American robin (*Turdus migratorius*), Humber Bay Park (East), (Toronto, Canada) 1 January 2005

([https://en.wikipedia.org/wiki/File:Turdus\\_migratorius-002.jpg](https://en.wikipedia.org/wiki/File:Turdus_migratorius-002.jpg))

The best known example is probably the American Robin *Turdus migratorius*. Confusingly this is actually a true thrush, and its closest relative is the redwing. People have often confused it with the European robin although, apart from an orangey-red breast, it looks very different. It even took the place of our robin in the original film of 'Mary Poppins!' The American robin has its own place in mythology, with traditional stories told by indigenous First Nation people like the Hopi. They believed that the robins' autumn migration to the south promised a safe journey for them, too. The Blackfoot tribe believed that the presence of a robin would keep a village peaceful.



Tasmanian pink robin (*Petroica rodinogaster*), Cradle Mtn. NP, Tasmania, Australia (Gary L Clark; [https://en.wikipedia.org/wiki/Pink\\_robin#/media/File:Pink-robin.jpg](https://en.wikipedia.org/wiki/Pink_robin#/media/File:Pink-robin.jpg))

There are other so-called robins in Asia,


like the Golden Bush Robins, in South Africa, home to the Chorister Robin-Chat, South America, where the Rufous-bellied Robin sings rather like our blackbird, and, closer to home, you might be lucky enough to spot a Tenerife Robin or a Gran Canaria Robin whilst on holiday.



Flame robin (*Petroica phoenicea*) ([https://en.wikipedia.org/wiki/Flame\\_robin](https://en.wikipedia.org/wiki/Flame_robin))

Down under there are 49 species of Australasian robins, the most striking of which is probably the black and rose-pink breasted Pink Robin of Tasmania. No doubt there were traditional tales about this gorgeous little bird too, but we will probably never know as the indigenous people of Tasmania were completely wiped out by European colonialism.

*The Life of the Robin*: David Lack ISBN 978-1-8436-8130-4

 *The Life of the Robin*: David Lack ISBN 978-1-8436-8130-4 [http://www.pallasathene.co.uk/logs/index\\_classic.html](http://www.pallasathene.co.uk/logs/index_classic.html)

### CLINGING ON BY THEIR TAILS...

Ben Stammers, Swyddog Bywyd Gwyllt a Phobl/Wildlife and People Officer, North Wales Wildlife Trust

Harvest mice (*Micromys minutus*) are tiny, fascinating, and relics of a more wildlife-friendly landscape of days gone by. These unique and rarely-seen mammals have declined across much of their range. Apparently commoner in lowland southern Britain, evidence of their distribution in Wales is patchy (the Mammal Society lists their status as 'vulnerable' here); however, recent survey work by North Wales Wildlife Trust (NWWT) suggests that they are clinging on at a handful of locations on Anglesey.

An adult harvest mouse has ginger and white fur, and weighs on average less than a 2p coin. That lightness allows it nimbly to negotiate the tangled stalk zone of vegetation such as grasses or

reeds. Its special prehensile tail acts as a fifth limb and means it can also balance or hang whilst feeding, as monkeys do in the rainforest.



November 202222: a harvest mouse nest at Rhos Llaniestyn (Ben Stammers)

As the name suggests, harvest mice have been historically associated with crops, but changes to how and what we farm mean that they have all but disappeared from this habitat. Nowadays, the small numbers of records collected mostly come from wetland, rough grassland or heathland sites.



November 2022: harvest mouse survey under way at Rhos Llaniestyn (Ben Stammers)

Given their size and the terrain they inhabit, spotting live harvest mice is difficult, but their presence can be proven by some distinctive signs. Located a foot or more off the ground, out of reach of hunting weasels or competition from voles, their breeding nests are one of nature's marvels: intricately woven from living leaves of grass, carefully split lengthwise then intertwined, these nests are roughly tennis ball-sized, and accommodate litters of 6 or 7 young, stretching as the young mice grow.

Skilled construction means that nests maintain their form long after the young have left, which can be as soon as 11 days after being born. Although harvest mice don't hibernate, smaller, separately woven cocoons help keep individual adults warm in winter.

(continued on page 16)

Ena's Newsagents

Ena's Newsagents

Ena's Newsagents

For newspapers, magazines and things that you know you need

Thank you, Ena's Newsagents, for supporting **The Puffin**

24 Castle Street, Beaumaris, Anglesey LL58 8AP

☎ 01248 810292

Ena's Newsagents

Ena's Newsagents

Ena's Newsagents



# Canolfan Biwmares

# MWY NA CHANOLFAN HAMDDEN YN UNIG

## CERDDORIAETH FYW

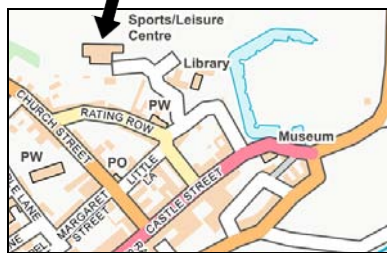


### • Gŵyl Biwmares •

Dydd Mercher 24 Mai/ Dydd Mercher 31 Mai

• Seindorf Biwmares Cyngerdd Haf •  
l'w gyhaoeddi

## RYDYM YMA!



Canolfan Biwmares, Rating Row,  
Biwmares, Ynys Môn LL58 8AL

Mwynhewch eich ymweliad!

## MARCHNAD RAD DAN DÔ/ ARWERTHIANT CIST CAR



Dydd Sul 14 Mai  
10.30yb-3.00yp

Amrywiaeth o stondinau a chaffi

## NOSON FFILM



Dydd Iau cyntaf o bob mis  
Gweler y dudalen 3

7.00yp, £5.00 y pen



Ystafell ffitrwydd, chwaraeon, dosbarthiadau  
ffitrwydd, campfa merched yn unig,  
arddangosfa gelf, llogi beiciau, nosweithiau  
ffilm, adloniant, cerddoriaeth fyw, partiön  
plant, llafnrollo, marchnad rad, ffair hen  
bethau, digwyddiadau, dawnsio a llawer mwy!

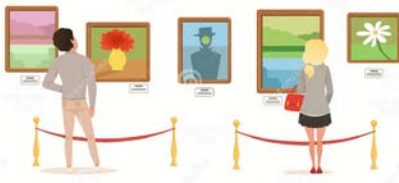
## FFAIR HEN BETHAU



Trydydd Sul y mis

## ARDDANGOSFA GELF

Ar agor i'r cyhoedd



Arlunydd newydd bob mis

Yn rhad ac am ddim

## CANOLFAN LLES SEIRIOL

gan gynnwys

- Dosbarthiadau ffitrwydd •
  - Tai chi •
  - Aciwbigo •
  - Podiatrig •
- Therapiau holistaidd •
- Ymwybyddiaeth ofalgar •
  - Osteopathi •



• • • • •  
**Cysylltu â ni  
os hoffech  
mwy o wybodaeth  
Ein manylion  
yn cael eu rhoi isod**

## LLOGI BEICIAU

Beiciau pedal neu drydan i oedolion a  
phlant ar gael i'w llogi am ddiwrnod  
llawn neu hanner diwrnod



• mae prisiau'n amrywio •

## GWEITHGAREDDAU CYMUNEDOL

gan gynnwys

Dosbarthiadau cyfrifiadurol • Clwb bridge  
Grwp celf • Grwpiau crefft



Bore coffi  
Sgyrsiau • Canu

## NEWYDD!

ar gyfer 2023

Pecynnau aelodaeth newydd

• Badminton •

**mwy o sesiynau, gan  
gynnwys**

• Cylchdeithiau capfa •

• Yoga •

• Warriors Martial Arts •

☎ 01248 811200

✉ enquiries@canolfanbeaumaris.org.uk

🌐 www.canolfanbeaumaris.org.uk/

🌐 www.facebook.com/canolfan.beaumaris.7/



**Canolfan  
Beaumaris**

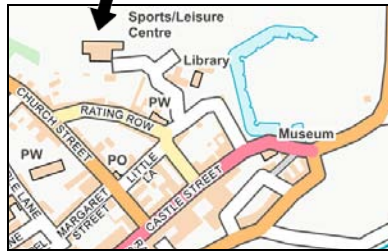
**MORE THAN JUST  
A LEISURE CENTRE**

**LIVE SHOWS**



- **Beaumaris Festival** •  
Wednesday 24 May/Wednesday 31 May
- **Seindorf Beaumaris Band  
Summer Concert** •  
to be announced

**WE ARE HERE!**



**Canolfan Beaumaris, Rating Row,  
Beaumaris, Anglesey LL58 8AL**

**Enjoy your visit!**

**TABLE TOP SALE**



Sunday 14 May  
10.30am-3.00pm  
A variety of stalls and a café

**BEAUMARIS FILM NIGHT**



The first Thursday of the month  
at 7.00pm, £5.00 per person  
See the listing on page 3



Fitness suite, sports, fitness classes, ladies-only gym, art exhibitions, bike hire, film nights, entertainment, live music, kids' parties, rollerblading, flea market, antiques fair, events, dancing and much more!

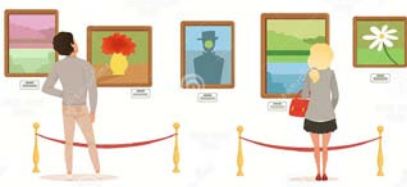
**ANTIQUES FAIR**



The third Sunday of the month

**ART EXHIBITION**

Open to the public



New artist each month  
Free of charge

**CANOLFAN SEIRIOL  
WELLNESS CENTRE**

including

- Exercise classes •  
• Tai chi •
- Acupuncture •  
• Podiatry •
- Holistic therapies •  
• Mindfulness •  
• Osteopathy •  
• • • • •



• • • • •  
**Contact us  
if you'd like  
more information**  
**Our details  
are given below**

**BIKE HIRE**

Adults' and children's bikes, pedal or electric, available for full-day or half-day hire



• prices vary •

**COMMUNITY ACTIVITIES**

including

- Computer classes • Bridge club
- Arts group • Craft groups



Coffee morning  
Talks • Singing

**NEW!**

**for 2023**

**New membership packages**

- Badminton •
- plus more sessions,  
including**
- Gym circuits •  
• Yoga •  
• Warriors Martial Arts •

☎ 01248 811200

✉ enquiries@canolfanbeaumaris.org.uk

🌐 www.canolfanbeaumaris.org.uk/

🌐 www.facebook.com/canolfan.beaumaris.7/

(from page 13)

The NWWT has collaborated recently with Cwlwm Seiriol to organise harvest mouse nest surveys with local volunteers, with members of the Môn Gwyrd youth forum. A particular focus has been on Rhos Llaniestyn, a local nature reserve in Llanddona, where the habitat is dominated by tussocky purple moor grass (*Molinia caerulea*) intermixed with heather, gorse, bramble and willow.



Harvest mouse on a teasel (https://www.mammal.org.uk/wp-content/uploads/2020/10/Harvest-Mouse-by-Gary-Chisholm-scaled.jpg)

Surveying is undertaken in winter once nests are empty after breeding, and involves painstaking searching, sometimes on hands and knees.

It's testament to the volunteers' hard work that harvest mouse presence has been confirmed in several areas at Llaniestyn, with 13 nests found in 2022. More recently, a single nest was found on a survey at Brynddu, outside Llanfechell, which seems to hold a small population; a nest was initially found during management work there in 2014.

Harvest mice populations can apparently drop below 10% in winter, and are known to be vulnerable to prolonged cold or wet weather. Although numbers can rebuild through rapid breeding from spring onwards (they can have three litters in a season), the worry for Anglesey, with its seemingly isolated colonies, is that a bad winter could just wipe out a whole site, with little chance of recolonisation from nearby.

For this reason, it's vital that harvest mouse monitoring continues at the few known sites in our area, and that

appropriate conservation measures like sensitive scrub clearance are encouraged, to maintain the habitats. The NWWT is also keen to survey other potential sites across the island: these miniature weavers are easy to overlook, and more dots on the map would make their continuing survival here seem a more hopeful prospect.

📄 Eurasian harvest mouse  
[https://en.wikipedia.org/wiki/Eurasian\\_harvest\\_mouse](https://en.wikipedia.org/wiki/Eurasian_harvest_mouse)

📄 North Wales Wildlife Trust  
[www.northwaleswildlifetrust.org.uk](http://www.northwaleswildlifetrust.org.uk)

## DID THE ROYAL YACHT EVER COME TO BEAUMARIS?

John Brimecombe

In this case I mean *Britannia*, the gaff-rigged racing cutter, built in 1893 for the then Prince of Wales, Albert Edward; at that time he was the Commodore of the prestigious and exclusive Royal Yacht Squadron, of Cowes, Isle of Wight. She cost £8,300, and was built at Partick on the river Clyde to a design by G L Watson of Glasgow, the foremost yacht designer of that time. She was regarded by many as being one of the most beautiful racing yachts of the type ever designed and built.



This picture of *Britannia* is a copy of the photograph which hung on the living room wall of West Lodge for many years; it shows how she would have looked as a Big Class yacht before she was converted from gaff-rigged to a Bermudian-rigged 'J' class yacht in 1931 (John Brimecombe)

Not only did she look superb, she was also a race winner of her type, which at that time was known as the 'Big Class'. At about 120'/36.5m in length and displacing some 200 tons or more these yachts were the Formula One racing machines of the day, with spectators coming from far and wide to watch these magnificent yachts racing. It was indeed a rich man's sport. This was the type of yacht which was used at the time to challenge the USA (unsuccessfully!) for

the America's Cup.

After 1897, there was a decline in 'Big Class' racing, and *Britannia* was sold. In about 1899, she was bought by Sir Richard Williams-Bulkeley, of Baron Hill, Beaumaris. He only had her for about a year, however, when the Prince wanted her back (it pays not to argue with the future King Edward VII). I have a photo of Sir Richard and Lady Bulkeley with my grandfather and others, reputedly taken on board *Britannia*. This is where this beautiful yacht passes out of this story, but she still had a long future ahead of her.

In those days, it was the practice with many fishermen to be employed, in the summer, on the yachts of the rich (and sometimes famous) as 'paid hands', as they were known, returning to fishing at other times, and so it was with my paternal grandfather, William Frost Brimecombe. He was born in 1855 in the village of Highweek, now a suburb of Newton Abbot, Devon. As a young man he moved to Brixham to become a seaman, working his way up the ladder to get his 'skipper's ticket' to enable him to command a fishing boat of over 25 tons. I have a very tattered copy of his Skipper's Certificate of Service dated December 1883.





One of William Brimecombe's discharge certificates, this one dated 29 October 1896 (John Brimecombe)

I also have copies of a number of his Discharge Certificates until 1900. These give dates and places of joining and leaving the various vessels, in what capacity employed, ability and conduct, plus brief details of the various voyages, which included home and foreign cruising, Mediterranean and a visit to Norway.

For most of these certificates, the starting and finishing port was Cowes, Isle of Wight, but one started and finished at Beaumaris. For some of this period, he was employed by Sir Richard Bulkeley, of Baron Hill, Beaumaris; in

(continued on page 18)

 	<p>We support communities around our local neighbourhood stores, and provide a great range of quality everyday products and services, close to where people live, and available when they need them.</p> <p>Thank you, Morrisons Daily, for supporting <b>The Puffin</b></p>	<p>China House, Llangoed, Anglesey LL58 8NW</p> <p>☎ 01248 490056</p> <p>🌐 <a href="http://www.mccolls.co.uk/">www.mccolls.co.uk/</a></p>
---	--	---



**Croeso!** Dyma ein tudalen wybodaeth newydd, sydd wedi'i chynllunio i'ch diweddarau gyda'r hyn sy'n digwydd yn eich Neuadd Bentref.

**Neges bwysig** Yn ein Cyfarfod Cyffredinol Blyneddol ym mis Tachwedd 2022 etholwyd sawl Aelod newydd i wasanaethu ar Bwyllgor Rheoli Neuadd y Pentref. Ers hynny, rydym wedi bod yn brysur yn gweithio ar nifer o ddigwyddiadau, a ffyrdd o annog pobl leol i ymwneud mwy â chefnogi'r Neuadd Bentref. Rydym am iddo fod yn le cynnes a chroesawgar i bawb gwrdd, bwyta a mwynhau.

Bydd llawer ohonoch yn gwybod bod gan y Neuadd gyfleusterau ardderchog ar gyfer gweithgareddau rheolaidd a chyfarfodydd grŵp a gellir hefyd ei defnyddio ar gyfer partïon a swyddogaethau preifat. Mae ein tudalen Facebook (chwilwch ar *Facebook Neuadd Bentref Llanddona Village Hall*) yn rhoi blas o'r hyn sy'n digwydd.



Roedd y cyfnod clo yn her i ni gyd ac wrth i bethau ddychwelyd i 'normal', mae her arall yn ein gwynebu, sef her ariannol oherwydd chwyddiant rampant yn neidio i mewn i'w ddisodli...ond rydym yn symud ymlaen mewn ffordd gadarnhaol i ailsefydlu'r Neuadd fel canolfan gymdeithasol a diwylliannol werthfawr i Llanddona a'r cyffiniau. Plis cefnogwch ni er mwyn i ni sicrhau fod y Neuadd yma i bawb fwynhau am flynyddoedd maith i ddod.

Rydym yn croesawu pawb, ac yn cynnig help, fel gwirfoddoli, awgrymiadau ar gyfer gweithgareddau a digwyddiadau... Peidiwch ag anghofio, eich Neuadd Bentref chi ydi hi, felly manteisiwch ar yr hyn sydd ganddo i'w gynnig.

Edrychwn ymlaen at glywed gennych!

#### **Y Man Cyfarfod/The Meeting Place**

Byddwch wedi darllen am y fenter Hwb Cynnes cenedlaethol a Hwb Cynnes Llanddona yn rhifyn diweddar o *The Puffin*. Daeth y fenter genedlaethol i ben ddiwedd mis Mawrth, ond bydd ein Hwb Cynnes yn parhau ar agor bob dydd Mawrth, 1.00yp-4.00yp, o dan enw newydd: Y Man Cyfarfod/The Meeting Place.newydd: Y Man Cyfarfod/The Meeting Place.

Dyma le mae croeso i bobl o bob oed

alw heibio am sgwrs, cyfarfod ffrindiau, cael paned a bisged neu ddwy, cymryd rhan mewn amrywiaeth o weithgareddau, dysgu chwarae chwist, prynu neu fenthyg llyfr o'n llyfrgell helaeth neu ddod â'ch cyfrifiadur eich

### **Neuadd Bentref Llanddona Village Hall**



hun a gwneud rhywfaint o waith drwy ddefnyddio ein WiFi am ddim.



Y Hwb Cynnes cyntaf  
The first Warm Hub



Y Hwb Cynnes: gwersi gitâr  
The Warm Hub: guitar lessons

Os nad ydych chi wedi ymweld yn barod, beth am alw heibio i weld beth sy'n digwydd? Byddwch yn sicr o groeso cynnes!

Cwmni da; mynediad am ddim; lluniaeth am ddim; croesawir cŵn...beth mwy allech chi ei eisiau?!

**Llogi'r Neuadd** Mae'r adeilad yn un modern, ysgafn, llachar a chynnes, ac mae'n cynnig dewis o wahanol ystafelloedd sydd ar gael i'w llogi ar gyfer eich swyddogaeth neu'ch digwyddiad. Mae'n ddefnyddol ar gyfer partïon pen-blwydd, dathliadau priodas, digwyddiadau codi arian, ac yn y blaen. Gallwn hyd yn oed drefnu trwydded diodydd i chi.

**Dal i fyny gyda'r hyn sy' mlaen** Yn ogystal â'n manylion cyswllt, fe welwch galendr o ddigwyddiadau o dan y pennawd Llanddona yn *What's happening where?* ar dudalen 6...a gwnewch yn siŵr eich bod yn cadw llygad ar Facebook hefyd.



**Welcome!** This is our new information page, designed to keep you up-to-date with what's happening at *your* Village Hall.

**An important message** At our Annual General Meeting in November 2022 several new Members were elected to serve on the Management Committee of the Village Hall. Since then, we've been busy working on a number of events, and ways of encouraging local people to become more involved in supporting the Village Hall. We want it to be a warm and welcoming place for everyone to meet, eat and enjoy.

Many of you will know that the Hall has excellent facilities for regular activities and group meetings and can also be used for private parties and functions. Our Facebook page (search *Facebook Neuadd Bentref Llanddona Village Hall*) gives a flavour of what's happening.

We've all had difficult times, with the COVID pandemic knocking everything sideways. No sooner does that seem to be behind us than rampant inflation jumps in to replace it...but we're moving forward in a *positive* way to re-establish the Hall as a valuable social and cultural



Y Hwb Cynnes: llaw o chwist...a Billy!  
The Warm Hub: a hand of whist...and Billy!

centre for Llanddona and the surrounding area. Please support us so that we can ensure that the Hall is here for everyone to enjoy for many years to come.

We welcome everybody, and offers of help, such as volunteering, suggestions for activities and events... Don't forget, it's *your* Village Hall, so take advantage of what it has to offer!



Y Hwb Cynnes: awyryglch cysurus, cyfeillgar  
The Warm Hub: a comfortable, friendly atmosphere

We look forward to hearing from you!

### Y Man Cyfarfod/The Meeting Place

You'll have read about the national Warm Hub initiative and Llanddona's Warm Hub in recent issues of **The Puffin**. The national initiative drew to a close at the end of March, but our Warm Hub will remain open every Tuesday, 1.00pm-4.00pm, under a new name:

### Y Man Cyfarfod/The Meeting Place.

This is a place where people of all ages are welcome to drop in for a chat, meet friends, have a paned and a biscuit or two, take part in a range of activities, learn to play whist, games, etc., buy or borrow a book from our extensive library



Paned a Sgws: gweithio'n galed yn y gwaith  
Paned a Sgws: hard at work

or bring your own computer and get some work done using our free WiFi  
If you haven't visited already, why not drop in to see what's happening? You'll be sure of a warm welcome!

Good company; free admission; free refreshments; dogs welcome...what more could you want?!

**Hiring the Village Hall** The building is modern, light, bright and warm, and offers a choice of different rooms available to hire for your function or event. It is ideal for birthday parties, wedding celebrations, fund-raising events, and so on. We can even arrange a drinks licence for you.



Caffi Ni: rhai pobl bwysig!  
Caffi Ni: some important people!

**Keep up with what's on** As well as our contact details, you'll find a calendar of events under the *Llanddona* heading in *What's happening where?* on page 6... and make sure that you keep an eye on Facebook as well.

(from page 16)

about 1900 he moved, with his wife and young family, from Brixham to live and work full-time on the Baron Hill Estate, living at West Lodge, Beaumaris until his death in 1936. My grandmother remained there until her death in 1953.



My uncle Ernie, my grandfather William and my father; both boys were born at Brixham, and the photograph dates from c.1906  
(John Brimecombe)

The pictures of West Lodge and the approach to Beaumaris, show how it looked when my grandparents lived there, including the crenellated walls and large iron entrance gate. This was, of

course, before its demolition before the construction of the Cae Mair estate. I'm sure many readers of **The Puffin** will remember this view.



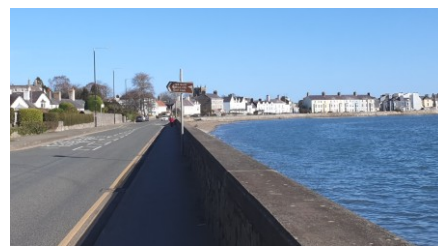
West Lodge and the approach from Gallows Point to Beaumaris; these photographs show how it looked when my grandparents lived there, including the crenellated walls and large iron entrance gate  
(John Brimecombe)

*Britannia's* last season was the summer of 1935, when the American 'J' Class *Yankee* visited British waters, in what was the last great flourishing of Big Class racing. It was the dying wish of her then owner, King George V, that his beloved yacht should follow him to the grave. On 10 July 1936, after *Britannia* had been stripped of her spars and fittings, her hull was towed out to St Catherine's Deep, off the Isle of Wight, where she was sunk.

Was *Britannia* ever seen at Beaumaris? I think it unlikely, but given the various connections, one never knows. If anyone



Then (just pre-war or post-war, probably)...  
(John Brimecombe)



..and now...the foreground has changed, with virtually all traces of West Lodge now gone, but the seafront in the background gives an air of continuity

can shed more light on the subject, I would be pleased to hear of it. **The Puffin** will pass anything on to me.

📧 Sailing Yacht *Britannia*  
[www.glwatson.com/about/history/sailing-yacht-britannia/](http://www.glwatson.com/about/history/sailing-yacht-britannia/)



### Owain Glyndŵr

Enjoy our friendly atmosphere and local cask ales, lagers and cider, wines, spirits and soft drinks...and in the bar and restaurant, a superb range of home-made meals and snacks.

Thank you, **Owain Glyndŵr**, for supporting **The Puffin**

☎ 01248 810710 • Llanddona, Anglesey LL58 8UF • ✉ [contact@ogdllanddona.co.uk](mailto:contact@ogdllanddona.co.uk)  
🌐 [www.facebook.com/pages/the-owain-glyndwr/160350960658446](http://www.facebook.com/pages/the-owain-glyndwr/160350960658446)

**A busy time ahead** It looks as if we're in for a busy few months at our recently improved workshop and garden!

**Astronomical observatory** We've been invited to help the Anglesey Dark Sky Partnership with a project to set up an astronomical observatory in Llangoed. A telescope and small observatory building were kindly donated to the project, and we were asked if we'd be able to assist in the dismantling of the building and refurbishing the structure.

Bob and I travelled to the site in Deganwy with Jonathan Lewis from Llangoed to meet Dani Robertson, Charles Gershom Spendlove and their team from the Dark Sky Project. Between us we removed the telescope successfully, dismantled the observatory and took the structure to our workshop at Haulfre, Llangoed.

There's a considerable amount of work to be undertaken to the timber structure of the building, but I'm sure that our capable team at the workshop will be able to complete the work to a good standard. We very much look forward to completing the refurbishment and in setting up the observatory and telescope in due course.

**Llangoed Village Hall** We've started work on the garden improvements to the grounds at Llangoed Village Hall; this has been awarded a grant by Menter Môn. We'll be building a series of planters to be sited inside the railings which front the entrance to the Hall.

potatoes. We will be working with Eirwyn, the Site Manager, and his team from the centre to prepare and maintain the plot.

Plans for the greenhouse include the installation of an automated irrigation

## SEIRIOL MEN'S SHED

Steve Jones



system which we hope will help us grow healthy vegetables without having to worry about watering during prolonged hot spells.

**The Equestrian Museum** Essential work on the buildings at Haulfre has

Isle of Anglesey CC's archives in Llangefni.

**Tools for Africa** We're still working with the Rotary Club on the Tools For Africa project, and our workshop is the collection point for any unwanted handtools, gardening tools, etc., that you have or know are available.

**We do repairs** We're able to offer a repair service for broken or damaged items of furniture, such as tables, chairs, garden furniture and equipment, and we offer a sharpening service for shears, loppers, etc.

All that we ask for is for a small donation towards our running costs and the cost of any materials that we have to provide.

**More members, please!** We're a small friendly group of men motivated by serving our Seiriol Community and enjoying the company that our group provides.

As always, we're looking to increase membership of our merry band. If you are interested in woodworking or metalworking our workshop has a comprehensive range of machinery and equipment.

Our crafting room is a work in progress and has a potter's wheel and a small kiln, as well as facilities for painting and whatever else might be suggested.

If you'd like to find out more about us please give us a call or visit us at our well-equipped workshop at Haulfre:



The observatory at its site in Deganwy; the delicate job of dismantling it has just started, with Steve Jones out of sight inside it in the process of unbolting the structure  
(Jonathan Lewis)

These will be planted up and maintained by Llangoed WI. We're also fabricating an arbour which will be erected on the pathway leading onto the front lawned area. This will be fitted with trellising for climbers to be planted, creating a feature entrance to the garden.

**Our garden area at Haulfre** Our garden is looking very promising for the coming season. We've been allocated an additional plot alongside our polytunnel in which we intend to grow a variety of

recently been completed, including vital repairs to the roofs and guttering. The scaffolding has been removed, and once again we have access to the Equestrian Museum which we are hoping to open to the public later this year.

As I mentioned in **The Puffin** 43 (page 19), we'd welcome any photos, articles or local knowledge regarding the Haulfre estate and the Chadwick family; unfortunately, we haven't been able to unearth a great deal of information from



L-R: Steve Jones, Bob Bousfield, Susan Busby (wife of the late Bob Busby who set up the telescope and observatory), Charles Gershom Speedlove, Jonathan Lewis, Alun Gethin Jones and Robin Lloyd Jones  
(Dani Robertson)

- Seiriol Men's Shed is for men aged 18-108.
- We meet on Tuesdays and Thursdays, 10.00am-1.00pm.
- Times and days will expand to suit membership.

**How to find us** You'll find our contact details and directions to us at Seiriol Men's Shed in *What's happening where?* on page 7. Visit us, have a cuppa and a biscuit with us and ask us any questions you like!

## SGOWTIAID MÔR 1<sup>AF</sup>

### BIWMARES: SEFYDLWYD YN 1909

Dave Johnson, Arweinydd Grŵp Sgowtiaid, Sgowtiaid Môr 1<sup>af</sup> Biwmares

Dwi ddim yn disgwyl y bydd llawer o bobl Biwmares a'r ardal gyfagos yn Gwybod bod 1<sup>af</sup> Sgowtiaid Môr Biwmares wedi bod mewn bodolaeth ers 1909.

Dechreuwyd Sgowtiaid Biwmares gan y Capten Richard Williams-Bulkeley (mab yr Arglwydd Raglaw) yn fuan ar ôl ffurfio Tros Caergybi. Fodd bynnag, cofrestrwyd y Tloty hwn yn gyntaf yn Y Pencadlys a daeth i gael ei adnabod fel 1<sup>af</sup> Môn i carwriaeth Caergybi a ddaeth wedyn yn 2<sup>il</sup> Ynys Môn. Cyn hir penderfynon nhw gael eu hadnabod fel 1<sup>af</sup> Caergybi, ond arhosodd Biwmares yn 1<sup>af</sup> Ynys Môn tan y 1920au, pan gafodd ei hailenwi'n 1<sup>af</sup> Biwmares. Roedd hwn yn froedigaeth gref iawn am flynyddoedd lawer.

Rydym bellach yn tyfu eto, ond mae angen mwy o wirfoddolwyr arnom i ddarparu'r gweithgareddau y mae ein haelodau yn eu haeddu. Os hoffech helpu, cysylltwch â ni.

✉ [david.johnson@scoutsmon.wales](mailto:david.johnson@scoutsmon.wales)

☎ 07799 231406



### 1<sup>ST</sup> BEAUMARIS SEA SCOUTS: FOUNDED IN 1909

Dave Johnson, Group Scout Leader, 1<sup>st</sup> Beaumaris Sea Scouts

I don't expect that many people in Beaumaris and the surrounding area will know that 1<sup>st</sup> Beaumaris Sea Scouts have been in existence since 1909.

Beaumaris Scouts were started by Captain Richard Williams-Bulkeley (son of the Lord Lieutenant) soon after the formation of the Holyhead Troop. However, this Troop was registered first at Headquarters and became known as 1<sup>st</sup> Anglesey to the chagrin of Holyhead who then became 2<sup>nd</sup> Anglesey. They soon decided to be known as 1<sup>st</sup> Holyhead, but Beaumaris remained 1<sup>st</sup> Anglesey until the 1920s when it



Please help us to provide challenge and adventure for boys and girls aged 6-14 years.



Volunteer!

We need adult volunteers in all sections.

No prior experience is required. All training can be provided, including National Governing Body qualifications.

Volunteering can be fun and is enjoyable! Once a week, once a term, share a role with someone else – it's up to you. We're looking especially for leaders to be responsible for sections on a weekly basis. Fancy trying

kayaking, hill walking, power boating and more? Working towards NGB qualifications? We can provide the experience that you need!

There is a free enhanced DBS check: all adult volunteers go through a straightforward vetting process, including an enhanced disclosure and barring service check, as part of The Scouts' commitment to safeguarding children.

Please contact Dave Johnson, Group Scout Leader

✉ [david.johnson@scoutsmon.wales](mailto:david.johnson@scoutsmon.wales)

☎ 07799 231406



was renamed 1<sup>st</sup> Beaumaris. This was a very strong Troop for many years.

We are now growing again, but we need more

volunteers to provide the activities our members deserve. If you would like to help, please get in touch.

✉ [david.johnson@scoutsmon.wales](mailto:david.johnson@scoutsmon.wales)

☎ 07799 231406

### YNYS MÔN OED-GYFEILLGAR

Sioned Young, Swyddog Datblygu Cymunedau Oed-Gyfeillgar, Gwasanaethau Oedolion, Cyngor Sir Ynys Môn

Helo, Sioned Young ydw i a dwi'n gweithio i Cyngor Sir Ynys Môn ers mis Medi 2022 fel Swyddog Datblygu Cymunedau Oed-Gyfeillgar. Dwi'n gweithio i geisio sicrhau nad oes yno unrhyw rwystrau i heneiddio'n dda ar Ynys Môn.

Dwi'n gweithio'n agos mewn partneriaeth gydag unrhyw grŵp, mudiad neu elusen sy'n cefnogi pobl hŷn a'n gweithio tuag at greu Ynys Môn yn Ynys Oed-Gyfeillgar. Mae fy ngwaith hyd heddiw wedi cynnwys trefnu Diwrnodau 50+ gyda Môn Actif, cynhyrchu Cyfeirlyfr Cludiant Cymunedol, Cyfeirlyfr Adeiladau Cymunedol, a threfnu hyfforddiant ymwybyddiaeth sgamiau a mwy.

Dwi hefyd yn gweithio mewn partneriaeth gydag Age Cymru Gwynedd a Môn i ail-gyflwyno Fforymau Pobl Hŷn i'r ynys ar ffurf fwy lleol wedi'r pandemig, gydag un wedi digwydd o fewn Ward Seiriol, ar yr 14 Mawrth, yn Neuadd Bentref Llanddona Village Hall.

Os hoffech sgwrs i ddyysgu grŵp am fy ngwaith, neu gynnig awgrymiad o rywbeth gellir ei wneud i wella bywyd i bobl hŷn ar Ynys Môn: byddwch yn siŵr o gysylltu.

✉ [sionedyoung@ynysmon.llyw.cymru](mailto:sionedyoung@ynysmon.llyw.cymru)

☎ 01248 751832



### AGE FRIENDLY ANGLESEY

Sioned Young, Age Friendly Communities Development Officer, Adult Services, Isle of Anglesey County Council

Hello, I'm Sioned Young, and since September 2022 I've been working



### The Pilot House Café

Black Point, Penmon, Anglesey LL58 8RR

☎ 01248 490140 [www.pilothousecafe.com/](http://www.pilothousecafe.com/)

Open daily from 10.00am until late in the season, and during daylight hours in winter

Thank you, *Pilot House Café*, for supporting The Puffin



for the Isle of Anglesey County Council as an Age Friendly Communities Development Officer. I'm working to ensure that there are no barriers to ageing well on Anglesey.

I work in close partnership with any group, organisation or charity supporting older people on Anglesey to work towards making Anglesey an Age Friendly Island. My work to date has included organising 50+ Open Days with Môn Actif, producing both a Community Transport Directory and Community Buildings Directory, organising Scam Awareness training and more.

I'm also working in partnership with Age Cymru Gwynedd a Môn to reintroduce Older People's Forums throughout the island on a more local level, with one having recently taken place in the Seiriol Ward, on 14 March, in Neuadd Bentref Llanddona Village Hall.

If you'd like to learn more about my work, or have a suggestion of something that could be done to improve the lives of older people on Anglesey – be sure to get in touch.

✉ [sionedyoung@ynysmon.llyw.cymru](mailto:sionedyoung@ynysmon.llyw.cymru)

☎ 01248 751832

## CLWB BOWLIO BEAUMARIS BOWLING CLUB

David Mathias, Secretary

This year, Clwb Bowlio Beaumaris Bowling Club will be fielding eight teams again, in five different leagues, and would like to welcome new members, young or old, male or female.



Barry Harris, winner of the Tom Towert Memorial Cup, played on August Bank Holiday Monday 2022, at the Benllech Bowling Club (David Mathias)

The bowling green opened officially at Easter, so anyone who would like to enjoy some social bowling before possibly taking on competitive bowling can hire Bowls from Kim, in the Café Pavilion.

The Club had a successful season in 2022, winning the Gwynedd Knockout Cup, beating Llanrwst in the Final at

[puffinpages@gmail.com](mailto:puffinpages@gmail.com)

Benllech in August. They also won the Tony Hughes Cup and the John Griffiths Trophy.

Individual success went to Stuart Thomas, who won the League Singles Cup, Stuart and his partner Keith Bailey, who won the League Doubles Cup and Barry Harris, who won the Tom Towert Memorial Cup.



Me on ITV's *The Chase*, in October 2022; sadly 'The Chaser' (the Sinnerman) chased us down and our team didn't win the £23,000 (David Mathias)

Following on from my appearance on television's *The Chase*, with Bradley Walsh over the Winter, I won the Betws yn Rhos 2022-2023 Winter League Aggregates Trophy on 18 March, having played 13 games, winning 13 games and ending with a final combined aggregate of +186.



18th March 2023: me, David Mathias, the Winner of the Betws yn Rhos Winter League Aggregates Trophy, having played 13 matches and won 13 matches (David Mathias)

Anyone wishing to take on the game of Crown Green Bowling this season should check out the Beaumaris Bowling Club website and Facebook page, or contact me.

My details are below.

✉ [davemathias49@gmail.com](mailto:davemathias49@gmail.com)

☎ 01248 490222, 07712 121147

📧 Beaumaris Bowling Club  
<https://beaumarisbowlingclub.yolasite.com/>

📧 Beaumaris Bowling Club  
[www.facebook.com/people/Beaumaris-Bowling-Club/100063490482942/](https://www.facebook.com/people/Beaumaris-Bowling-Club/100063490482942/)

## LLANGOED WI

Anne Lindley, Press Officer

**Christmas lunch** We had a very enjoyable Christmas lunch at Bishopgate House Hotel in Beaumaris.

**October** Betty Brimecombe celebrated her 90<sup>th</sup> birthday.

**November** Margaret Charles celebrated 63 years as a member of Llangoed WI, and her 90<sup>th</sup> birthday.

**January** Geraldine Hedderick displayed a lot of her framed textile art, discussing her inspirations for her art and how she makes them.

**February** Our Beetle Drive brought out the competitiveness in all of us!

The raffle was won by Edna Prince.

The winners of the Loving Spoon Competition were:

- 1<sup>st</sup> Betty Brimecombe
- 2<sup>nd</sup> Chrissie Newsham
- 3<sup>rd</sup> Margaret Charles

**March** On St David's Day, members and visitors enjoyed entertainment with Arfon Wyn, who chatted about his life, and also encouraged members to join in the singing. A lavish Welsh tea had been prepared by our members, many of whom adopted Welsh costume for the afternoon.



Members Celebrating St David's Day (Anne Lindley)

**All-Anglesey WIs Quiz** There were 18 teams of four. The event was held in Llangefni Town Hall, with refreshments provided. There were several pages, including a page of bad pics of famous/known people; each table passed its papers to the next table to be marked after the completion of all pages.

## 19<sup>TH</sup> ISLAND GAMES IN GUERNSEY: YNYS MÔN MEN'S FOOTBALLER FROM LLANGOED

Ritchie Gregson

CPD Llangoed FC midfielder Sam Gregson is on his way to represent Ynys Môn men's football at the 19<sup>th</sup> Island Games in Guernsey in July.

Sam is a product of CPD Llangoed FC's successful youth team, and is currently playing university football in the USA.

Selected players were invited to gain sponsorship to help towards the costs of travel and accommodation for the duration of the games. Three local firms came up trumps:

- Greenfield Garage, Colwyn Bay, owned and operated by David 'Twm' Thomas, a Llangoed local, former Llangoed FC Manager and current player
- Wonderfully Wild, a local glamping holiday destination based at Cichle Farm in Beaumaris, owned and operated by Victoria and Robin Roberts
- MVW Valets, a local car valeting firm in Bangor, owned and operated by Marc van Weert

and Sam is on his way to the games in July.



Sam Gregson in action...  
(Ritchie Gregson)

You can follow the progress of all the teams competing in the games on-line.

📧 Ynys Môn Island Games Association  
<https://ymiga.com/>

📧 Ynys Môn Island Games Association  
[www.facebook.com/YMIGAssociation](http://www.facebook.com/YMIGAssociation)



## GEMAU'R 19<sup>EG</sup> YNYSOEDD YN GUERNSEY: CYFRANOGWYR SBRINT O LANSADWRN

Carwyn Elias Jones

Bydd 19<sup>fed</sup> Gemau'r Ynysoedd Rhyngwladol yn cael eu cynnal yn Guernsey ym mis Gorffennaf, a noddir gan NatWest. Mae'n cael ei alw'n drydydd digwyddiad tîm athletau mwyaf y byd, a bydd cyfanswm o 3,000 o athletwyr o 24 o ynysoedd sy'n aelodau ledled y byd, yn cystadlu mewn 14 o gampau gwahanol ar draws 25 lleoliad.

Yn cystadlu am y tro cyntaf fydd Eli Jones o Lansadwrn sydd wedi ei ddewis ar gyfer y sbrint yn y gemau. Mae Eli yn 17, yn mynychu Ysgol David Hughes ac

ac mae'n sbrintiwr brwd. Mae'n cymryd rhan mewn sbrint 60m, 100m a 200m, ac ar hyn o bryd mae'n ail gyflymaf yn Nghymru ar gyfer y 60m Merched o dan 20; hi hefyd oedd pencampwr 200m Ysgolion Cymru 2022 ac enillydd medal arian am y 100m. Mae Eli wedi cynrychioli Cymru yn nigwyddiad rhyngwladol Ysgolion SIAB yn Belfast, gan ennill gwobr arian i dîm Cymru yn y ras gyfnewid 4x100m.

Yn ei hamser hamdden mae Eli yn mwynhau mynychu Clwb Ffermwyr Ifanc Llangoed ac Eli yw Cadeirydd y Clwb.



Eli yn cynrychioli Cymru yn Belfast  
Eli representing Wales in Belfast  
(Carwyn Elias Jones)

I helpu tuag at ei thaith yn cystadlu yn Guernsey, mae gan Eli docynnau raffl i'w gwerthu, am £5 y llyfr, gyda'r holl elw yn mynd tuag at ei chronfa Gemau'r Ynysoedd. Os byddai gan unrhyw un ddiddordeb mewn cefnogi Eli a phrynu llyfr o docynnau raffl, byddai hynny'n cael ei werthfawrogi'n fawr; plis cysylltwch â mam Eli, Rhian Jones, ebost, [r.jones452@btinternet.com](mailto:r.jones452@btinternet.com) neu 07919 888369, neu ei thad (fi!), ebost [carwynjones@gmail.com](mailto:carwynjones@gmail.com) neu 07795 622025.



## 19<sup>TH</sup> ISLAND GAMES IN GUERNSEY: SPRINT PARTICIPANT FROM LLANSADWRN

Carwyn Elias Jones

The 19<sup>th</sup> International Island Games will take place in Guernsey in July, sponsored by NatWest. It's dubbed the third largest athletics team event in the world, and in total there will be 3,000

athletes from 24 member islands around the world, competing in 14 different sports across 25 venues.

Competing for the first time will be Eli Jones from Llansadwrn who has been selected for the sprint at the games. Eli is 17, attends Ysgol David Hughes and is a keen sprinter. She participates in 60m, 100m and 200m sprints, and is currently ranked second fastest in the Welsh for U20 Women's 60m; she was also the 2022 Welsh Schools 200m champion and 100m silver medallist. Eli has represented Wales at the SIAB Schools international event in Belfast, winning a silver for the Wales team in the 4x100m relay.

In her spare time Eli enjoys attending the Llangoed Young Farmers Club and is the Club's Chairperson.

To help towards her trip competing in Guernsey, Eli has raffle tickets to sell, at £5 a book, with all the proceeds going towards her Island Games fund. If anyone would be interested in supporting Eli and buying a book of raffle tickets, that would be greatly appreciated; please contact Eli's mother, Rhian Jones, at [r.jones452@btinternet.com](mailto:r.jones452@btinternet.com) or 07919 888369, or her father (me!), at [carwynjones@gmail.com](mailto:carwynjones@gmail.com) or 07795 622025.

## CLWB FFERMWYR IFANC LLANGOED

Carwyn Elias Jones

Mae Clwb Ffermwyr Ifanc Llangoed (CFFI) yn cwrrd ar nos Lun yn Neuadd Bentref Llanddona.



Godro ar Fferm Yr Orsedd, Llanddona  
Milking at Yr Orsedd Farm, Llanddona  
(Carwyn Elias Jones)

Mae gan y Clwb 17 o aelodau sy'n byw yn lleol, rhai aelodau o gefndiroedd ffermio a rhai ddim, ond pawb gyda chyd-ddiddordeb yng nghefn gwlad a'r

Siop  
Llandêg

♥ The shop at the heart of Llandegfan ♥

We support local producers, including Mercado by Midland and Central Bakery, Beaumaris

Thank you, Siop Llandêg, for supporting The Puffin

Siop Llandêg  
Lon Ganol, Llandegfan  
Anglesey LL59 5UA

☎ 07592 950159

✉ [siopllandeg@yahoo.com](mailto:siopllandeg@yahoo.com)

ardal leol. Mae'r Clwb ar agor i aelodau rhwng 13 a 30 oed.

Bydd aelodau yn paratoi ac yn cymryd rhan mewn dwy brif gystadleuaeth bob blwyddyn, sef yr Eisteddfod, gyda chystadlaethau'n cynnwys canu, adrodd, dawnsio a sgetsh gomedi, a Rali'r Sir, lle mae'r aelodau yn cymryd rhan mewn ystod o gystadlaethau o goginio, gwaith coed, dawnsio, meimio i gerddoriaeth a tynnu rhaff!



Ymweld a fferm Bodowyr yn nhyr y wyna Visiting Bodowyr farm in the lambing season (Carwyn Elias Jones)

Tra ddim yn paratoi i gystadlu mae'r aelodau'n mwynhau nosweithiau yn ymweld â ffermydd lleol, gyda thair fferm wedi ymweld eleni, dysgu am gynhyrchu cig eidion, wyna ac, yn fwy diweddar, ymweld a fferm odro ar Yr Orsedd, Llanddona, a oedd yn ymweliad 'godro' ymarferol.

Mae gweithgareddau eraill eleni yn cynnwys ymweld â Chanolfan Bwmares, bingo, cwis, dawnsio llinell, cymorth cyntaf, chwaraeon, mini golf, ymwybyddiaeth o gam-drin sylweddau, gwneud crempogau, ymweliad â Sinema'r Empire yng Nghaergybi a mynd i gartio ym Mhwlheli.

Y prif ffocws nawr ar gyfer gweddi y tymor fydd paratoi ar gyfer cystadleuaeth Rali'r Sir; llynedd roedd gan y CFFl Llangoed eu cyfanswm pwyntiau gorau ers nifer o flynyddoedd, ac fe ddaeth y Clwb yn bumed, un lle uwchben CFFl Llangefni!



## LLANGOED YOUNG FARMERS CLUB

Carwyn Elias Jones

The Llangoed Young Farmers Club (YFC) meets on a Monday evening at Neuadd Bentref Llanddona Village Hall.

The Club currently has 17 members who live locally, members from farming and non-farming backgrounds, but with a shared interest in the countryside and the local area. The Club is open to members aged 13-30.

Members prepare and take part in two main competitions each year, the

[puffinpages@gmail.com](mailto:puffinpages@gmail.com)

Eisteddfod, with competitions including singing, reciting, dancing and a comedy sketch, and the County Rally, where members take part in a range of competitions from cooking, woodwork, dancing, miming to music and tug of war!

When not competing the members enjoy evenings visiting local farms, with three farms visited this year, learning about beef production, lambing and, more recently, milking at Yr Orsedd Farm Llanddona, which was a hands-on 'milking' visit.



Cystadlu yn y Ffair Aeaf, Cae Sioe Môn Competing at the Winter Fair, Mona Show Ground (Carwyn Elias Jones)

Other activities this year have included visiting Canolfan Beaumaris, bingo, quiz, line dancing, first aid, sports, mini-golf, substance abuse awareness and pancake making, a visit to the Empire Cinema in Holyhead and go-karting in Pwllheli.

The key focus now for the remainder of the season will be preparing for the County Rally competition; last year the YFC had their best point total for a number of years and came fifth, and one place above Llangefni YFC!

## CLWB RHWYFO BEAUMARIS ROWING CLUB: START AS YOU MEAN TO GO!

Carol Hughes

The Welsh Sea Rowing league race calendar opened on Saturday 25 March, with Beaumaris facing the challenge of maintaining their pole position and defending the League Championship shield won last year. Well...what an amazing start: the future looks good!

In a very competitive field, Beaumaris senior vet (veteran) men (over 40) achieved the best overall men's time and smashed four minutes off the record. In addition, the senior vet women (over 40) won the overall women's best time. Two other Beaumaris boats, the super vet men (over 50) and super vet

women (over 50) also put on a great show.



Men vets...



...and women vets (Carol Hughes)

Just to put you in the picture as to how challenging this race is: the race is hosted by the Pengwern Rowing Club in Shrewsbury. The race is a time trial and the course is set at eight miles up the River Severn and six miles back down. Eight miles is about from Beaumaris to



Men supervets...



...and women supervets (Carol Hughes)

the Menai Bridge and back, something quite achievable for the race teams, and with good conditions they can make it out and back within about two hours; however, the river conditions couldn't

have been more challenging...a very full river with an exceptionally strong downward current.

The first upstream eight miles saw crews rowing hard just to maintain their position and often making no progress at all! The last Beaumaris crew was in in five hours and the last boat crossed the line at six and a half hours.

Hats off to all the rowers for sheer pluck, will-power and physical determination. This was indeed a challenging start to the season, but also demonstrated what an incredible achievement it was for the Beaumaris winning crews, and indeed for all the crews that took part.

So, Beaumaris: start as you mean to go on!

## BEAUMARIS CHURCH COMMUNITY GARDEN

Stephen Buckley, Comisiynydd Ardal/District Commissioner, Cyngor Sgowntiaid Ardal Ynys Môn/Anglesey District Scout Council

Following a generous grant from Menter Môn, a small body of volunteers have been rejuvenating the garden next to the Church of St Mary and St Nicholas in



Work under way in Beaumaris Church Community Garden; the benches were reslatted last year by the Seiriol Men's Shed team (Stephen Buckley)

Beaumaris. A new path has been created, tree work undertaken, and a lot of new planting has been done, with lots more to follow.

This garden will be a place of tranquility and serenity, somewhere to sit and reflect and take a break from our hectic lives. It is a garden in which we can all help...volunteers are needed for its upkeep.

If you are interested in helping, please contact Chris Newsham.

✉ [chrissynewsham@gmail.com](mailto:chrissynewsham@gmail.com)

☎ 07836 272488 (leave a voicemail message)

The opening of Beaumaris Church Community Garden will take place on Saturday 15 July.

## BEAUMARIS ROTARY: TREE PLANTING AT BEAUMARIS SCHOOL

Kevin Sivyver, Beaumaris Rotary Hub Lead

Members of Beaumaris Rotary planted a selection of locally-sourced alder and



Teacher Cari Roberts and pupils at Ysgol Gynradd Beaumaris assisting Robert Macaulay, Kevin Sivyver and Ian Davies in planting the trees in March (Kevin Sivyver)

pine saplings in the grounds of Ysgol Gynradd Beaumaris on 24 March to complement those that were planted last year, as part of Rotary's continuing commitment to the protection and promotion of the environment.

## LLANFAIRPWLL: THE MARQUESS OF ANGLESEY'S COLUMN AND ITS RESTORATION

Andrew Perrott

Work is under way to restore the Marquess of Anglesey's column in Llanfairpwll. This historic Anglesey landmark was closed to the public in March 2012 because it was unsafe, the 115 wooden steps in the tower having rotted.

A campaign was started in 2017, on the column's 200<sup>th</sup> anniversary, to restore and reopen it; since then, almost £1.4million has been raised, with most of it being from The National Lottery

Heritage Fund.

The column is set to be reopened to visitors this autumn. The rotten wooden stairs are being replaced, and the original cottage next to the column has been cleared out and the overgrown vegetation has been removed to make way for the new visitor centre and café that are planned.



The Marquess of Anglesey's column (Eirian Evans, CC BY-SA 2.0, <https://commons.wikimedia.org/w/index.php?curid=13460638>)

The column was finished in 1817, two years after the Battle of Waterloo, as a memorial to the 1<sup>st</sup> Marquess of Anglesey, William Henry Paget, and his important role in that battle; he was Wellington's second in command. The bronze statue of him was placed on the top of the tower in 1860.

The column was designed by Thomas Harrison, and is 27m/89' tall. It was a popular tourist attraction, its 115 steps to top and the impressive views from the top being quite a challenge. The site and column are owned by the Anglesey Column Trust.

📖 Marquess of Anglesey's Column [https://en.wikipedia.org/wiki/Marquess\\_of\\_Anglesey%27s\\_Column](https://en.wikipedia.org/wiki/Marquess_of_Anglesey%27s_Column)

📖 The Marquess of Anglesey's Column. [www.angleseycolumn.com](http://www.angleseycolumn.com)

## THE ROYAL NATIONAL LIFEBOAT INSTITUTION AND ANGLESEY: PART 3

Andrew Perrott

We started to tell the story of the Royal National Lifeboat Institution (RNLI) in **The Puffin** 41, beginning with an account of the first lifeboats.



We're proud to be a part of the community. We provide the essentials, we serve with a smile and we support local suppliers, schools and charities. We're there for you, and there for everyone.

Thank you, Spar, for supporting **The Puffin**

|| Castle Street, Beaumaris, Anglesey LL58 8AB

☎ 01248 810326

🌐 [www.spar.co.uk/store-locator/afb45405-spar-beaumaris](http://www.spar.co.uk/store-locator/afb45405-spar-beaumaris)



Part 2 appeared in **The Puffin** 43, in which we reached the 1850s, and here's part 3, moving to the 1860s.

**1861: the Whitby lifeboat disaster** On 9 February 1861, a great storm wrecked more than 200 ships on the east coast.

Whitby lifeboat had been launched already, by 8.30am, the first rescue, successfully saving the crew of the *John and Ann*. Not long after they returned, they were called out again to assist a schooner, *Gamma*, which had run aground.

At 11.30am, another vessel, the *Clara*, was seen heading for shore, close to the wreck of the *Gamma*. The lifeboat was rowed out to rescue the crew, and the ship broke up shortly after they left the scene; then two more vessels were spotted coming ashore, *Utility* and *Roe*. Once more, the lifeboat was rowed out to save both crews.

By 2.00pm, the violent gales were still at full force. The Harbourmaster and Coxswain decided that, if more vessels came in, they would not respond because the lifeboat would be of little use at a high tide. Shortly afterwards, the *Flora* and the collier *Merchant* were spotted in trouble. The *Flora* managed to enter the harbour, but the *Merchant* ran ashore.

Although they had agreed not to respond, the Whitby lifeboat crew couldn't stand by and watch the *Merchant* sink. As they manoeuvred towards the stricken vessel, a powerful wave caught the stern of the lifeboat, capsizing it and throwing the crew overboard.



Whitby Coxswain Henry Freeman, sole survivor of the 1861 Whitby lifeboat disaster (RNLI)

The sole survivor was Henry Freeman, who was on his first call out. His life was saved by the new design of cork lifejacket that he was wearing, donated by the RNLI. The cork lifejacket had been met with some resistance by the crew, who preferred they tried and trusted belts filled with ballast. Had they been wearing cork lifejackets, it is likely they would have survived.

Henry Freeman was awarded an RNLI Silver Medal for his courage and determination on that day, and he was later the Whitby RNLI Coxswain for

more than 20 years, helping to save over 300 lives in that time.

**The Zetland retires** The *Zetland* was mentioned in part 1 of this series.

She was built in 1802 and served for 78 years before being retired. She is the oldest surviving lifeboat in the world, and saved over 500 lives during her service. She was the 11<sup>th</sup> of 31 lifeboats made by the pioneering lifeboat builder Henry Greathead, and was purchased by the people of Redcar, being named after the Marquess of Zetland, the local Lord of the Manor. She was kept in a boathouse close to the beach and launched with the aid of a wheeled carriage. She was hauled over beach to the sea by the locals, and sometimes by a team of horses from the local farm. When the lifeboat was needed, the crew was called out by a local boy parading the streets with a drum.

The *Zetland's* final launch was on 29 October 1880. A schooner, *Luna*, struck Redcar pier in squally winds and broke in half. A successor lifeboat, *Burton-on-Trent*, and *Emma*, another lifeboat stationed at Redcar, were both out of action, having rescued crew members from two other vessels in distress.

The *Zetland* made her final heroic launch and successfully rescued *Luna's* seven sailors. The crew was awarded £100 from the RNLI for their heroic actions.

The *Zetland* is preserved at the Zetland Lifeboat Museum in Redcar as the oldest lifeboat in the world.

**The 1880s: the Mexico and street collections** On 10 December 1886, 27 lifeboatmen in the Southport and St Anne's lifeboats lost their lives whilst attempting to rescue the crew from the German barque *Mexico*. She left Liverpool on 5 December, bound for Guayaquil, Ecuador. Four days later she was caught in a violent gale, and in heavy seas and snow showers she ran aground on the perilous sandbanks in the Ribble Estuary. Lifeboats were launched from Lytham, St Anne's and Southport to rescue the stranded crew.

*Eliza Fernley* from Southport and *Laura Janet* from St Anne's were the first lifeboats to be launched. They both capsized during the rescue attempt and 27 of the 29 crew were drowned. A third lifeboat, *Charles Biggs*, was launched on her maiden rescue, and saved the *Mexico's* 12 crew members.

This is the worst loss of crew in the RNLI's history: 27 men lost their lives, leaving behind 16 widows and 50 children without fathers.

A public appeal was launched to support those widowed and orphaned by the tragedy, which was supported by HM Queen Victoria and the Kaiser Wilhelm.

The money raised also went towards a memorial to commemorate the lifeboatmen lost at sea. Six memorials were erected, including those on the promenade at St Anne's, Duke Street Cemetery in Southport and St Cuthbert's Church in Lancashire, which still stands today.

An 1891 appeal, bolstered by the press in the north-east of England, raised £10,000 in two weeks. In the same year, a local businessman, Sir Charles Macara, and his wife, Marion, organised the first Lifeboat Saturday, the first recorded charity street collection. It featured a parade of bands, floats and lifeboats through the streets of Manchester and raised over £5,000. Marion Macara formed a Ladies' Guild to help organise the street collection and within 10 years, more than 40 Ladies' Guilds had sprung up around Britain and Ireland, and the RNLI's income had doubled.

**19<sup>th</sup> century progress** The RNLI's early rowing and sailing lifeboats struggled in heavy seas, but advances in technology made more reliable forms of motive power available.

Steam had transformed Great Britain's industrial landscape through the development of steamships and the railways, but tending a coal-fired boiler in a boat that is pitching and rolling in heavy seas would not be an easy task.



The RNLI's first steam-driven lifeboat, the *Duke of Northumberland* (RNLI)

60 years after the idea was first mooted by Sir William Hillary, and after extensive trials, the RNLI's first steam-driven lifeboat, *Duke of Northumberland*, went into service at Harwich lifeboat station in September 1890. She was a hydraulic steam-driven lifeboat, so-called because she used waterjets instead of propellers, and was based on an 1888 scale model built by Greens of Blackwall. Five more steam lifeboats were commissioned; two were, and three were propeller-driven.

The three hydraulic steam-driven lifeboats were in service for over 40 years, and saved 570 lives, but lighter and faster petrol-driven lifeboats would soon start to appear. No more steam-driven RNLI lifeboats were built.

**1899: the launch from Porlock Weir** On 12 January 1899, RNLI lifeboat volunteers undertook one of the RNLI's

most arduous feats to date: that of dragging a lifeboat overland at night in terrible weather to launch in aid of a ship in distress.

The *Forrest Hall* was a 1,900 ton ship sailing from Bristol to Liverpool, with a crew of 13 and 5 apprentices. The stormy weather threatened to run the ship ashore at Porlock, several miles east of Lynmouth. She had been under tow, but the cable had snapped and the rudder washed away in the strong winds.

At 7.52pm, the Lynmouth Lifeboat Station received a report that the *Forrest Hall* was drifting ashore at Porlock Weir. The squally weather prevented the crew from launching their lifeboat from the harbour, but Coxswain Jack Crocombe proposed the lifeboat be taken overland and launched from Porlock Weir, where it was more sheltered. This was a 13-mile journey, including a quarter gradient climb of 434m, 1,423' over Countisbury Hill and a trek across Exmoor.

Around 100 local people gathered to haul the *Louisa*, which was 10m/32.5' long and weighed 10 tons, aided by 18 horses sent from a local farm. Six men were sent ahead with shovels to widen parts of the road. After the difficult climb up Countisbury Hill, they stopped for refreshments at the Blue Ball Inn, where they had to repair a carriage wheel that had fallen off. Most of the 100 helpers turned back, leaving just 20 men, including the 14 lifeboat crew, to control the boat down the hill into Portlock.

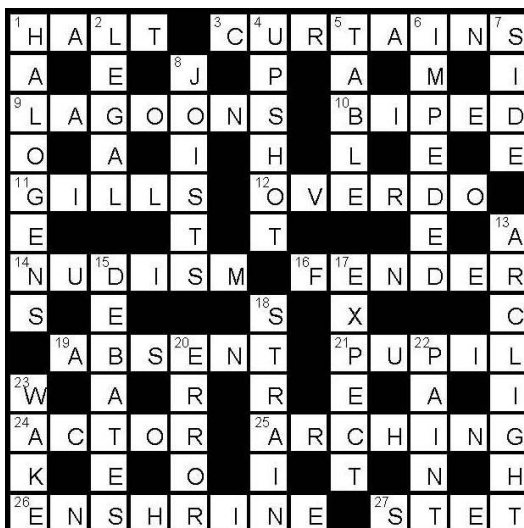
At one stage, the boat was dragged on skids, as the road was too narrow for the carriage and could not be widened. They were able to safely navigate their way down the hazardous terrain of Portlock Hill, even having to break down part of a garden wall to let the carriage and horses through.



The Lynmouth lifeboat *Louisa* in 1903 (RNLI)

The men finally reached the sea at 6.30am on 13 January, after a journey of nearly 11 hours. Although they were tired and hungry, they immediately launched the boat, and it took them another hour to reach the *Forrest Hall*, rowing through the

## THE GOVERNOR'S QUICK CROSSWORD NO 12: SOLUTION



## FIANCHETTO 66'S CHESS NO 3: SOLUTION

Move 1: Bxc3+ (a bishop sacrifice)  
Move 2: bxc3 (or Bd2 or Kd1) ...Qe2#

In plain language, the black bishop moves one square diagonally down to the left, taking the white knight and putting the white king in check.

Black is sacrificing his remaining bishop in order to remove the white knight, thus allowing his queen to move two squares to the left and deliver checkmate, no matter what move white makes next.

## DEBBIE'S ALPHANUMERICA NO 1: SOLUTION

- 1 7 Colours in a Rainbow
- 2 40 Days in Lent
- 3 366 Days in a Leap Year
- 4 1 Wheel on a Wheelbarrow
- 5 206 Bones in the Human Body
- 6 29029 = Height of Mount Everest above Sea Level in Feet
- 7 3 Strikes and You're Out in Baseball (USA)
- 8 Around the World in 80 Days (*Lit*)
- 9 11 Players in a Cricket Team
- 10 1440 Minutes in a Day
- 11 12 Numbers on a Clock
- 12 8 Furlongs in a Mile
- 13 99 = an Ice Cream with a Flake
- 14 1 Small Step for Man = 1 Giant Leap for Mankind
- 15 1 Stroke Under Par is a Birdie in Golf
- 16 4 Seasons = Spring Summer Autumn Winter
- 17 7 Wonders of the Ancient World
- 18 12 Good Men and True on a Jury
- 19 12 Eggs in a Dozen
- 20 3 Goals in a Hat Trick

rough seas and ferocious storm. The ship had anchored close to Hurlstone Point and the lifeboat stood by, rowing continuously to keep a safe position.

At daylight, two tugs arrived and managed to get a rope across to tow the ship. Several lifeboatmen from the *Louisa* went on board the ship to help the exhausted sailors raise anchors. The tugs towed the ship across the Bristol

channel to Barry, accompanied by the lifeboat in case any difficulties arose. They arrived safely at 6.00pm, and the Lynmouth lifeboat crew rowed back that night, finally reaching home at 11.30am on 14 January.

This heroic and very difficult rescue meant that the 18 crew of the *Forrest Hall* all survived. It still stands as one of the most challenging feats undertaken in the RNLI's history.

### The 20<sup>th</sup> century: more progress

By 1900, the days of steam-driven lifeboats were numbered. They were slow and heavy, and were expensive to build and maintain.

The future lay with the petrol engine; petrol engines had been proven on land and in the skies, but petrol and seawater weren't an obvious match, and making an engine casing that was watertight but not airtight would be one of the biggest challenges.

The earliest petrol-powered lifeboats were adaptations of existing rowing and sailing lifeboats. Under the direction of Naval Architect George Lennox Watson, a petrol engine was fitted successfully into a sailing lifeboat and trialed in the Solent in 1904. A year later, to a lukewarm reception from the crew, the *J McConnell Hussey* entered service at Tynemouth Lifeboat Station.



Tynemouth's second motor lifeboat, *Henry Vernon* (RNLI)

Gradually the detractors of petrol-powered lifeboats were won over: the additional power and controllability of petrol power showed its qualities when rescuing survivors from the hospital steamship *Rohilla* in 1914.

The evolution from sail to petrol, and later from petrol to diesel, revolutionised the RNLI's lifesaving capacity. Motor power had other benefits as well: crew members no longer needed a professional maritime background, giving the RNLI access to a much larger pool of potential lifeboat volunteers.

**1907: the *Suevic* rescue** The *Suevic* rescue in 1907 set the record for the largest number of people saved in a single operation in the RNLI's history, a record that

still stands today.

The *Suevic* left Australia on 2 February 1907, bound for Liverpool. She was carrying over 400 passengers and crew, and 12,000 tons of cargo, estimated to be worth £400,000.

She approached Cornwall's hazardous Lizard coastline on 17 March. A violent gale was blowing with a rough sea, and a dense fog bank hindered their course. The ship's captain used Lizard Lighthouse to navigate his way around the perilous rocks of the Lizard and, thinking mistakenly that the light was at least 10 miles away, he powered ahead at full speed. Twenty minutes later, the ship ran aground against the Maenheere Reef. Distress flares were sent up, although the heavy fog made them difficult to see. The Captain ordered the ship's lifeboats to be launched, but their awkward position on the rocks prevented many of them from being lowered.

By 4.25am, two RNLI lifeboats had arrived and three more were on the way. The fog was so dense that the first lifeboat actually collided with the side of the *Suevic*, but within a few hours the sun had risen and visibility had improved. Lifeboats travelled back and forth collecting passengers for 16 hours. At the mercy of the open sea and ferocious winds in open boats, the crew saved 456 lives, including the 70 babies on board.

Six people were awarded Silver Medals for Gallantry by the RNLI, including two crew members of the *Suevic* and two members of the Cadgwith lifeboat crew: Edwin Rutter and the Rev Harry Vyvyan.

The *Suevic* was refloated and rebuilt, and survived in Swedish ownership to be sunk during World War Two whilst escaping a German vessel off Sweden.

Part 4 of this history of the RNLI will appear in **The Puffin 45**.

📄 Our history  
<https://rnli.org/about-us/our-history>

📄 Make a donation  
<https://rnli.org/support-us/give-money/donate>

(to be continued)



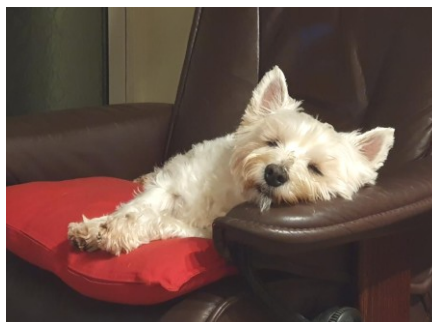
Crufts was such fun; Edie and I knew that we'd be winners in the agility ring; all that barking...



...meant that we were worn out afterwards...



I meet Billy, one of my other bezzies, at the Village Hall on a Tuesday afternoon...



...then I have to do some 'recovery zedding' in one of my armchairs after all that socialising...

## TAILPIECE: A WEARY WESTIE ON BEING A SOCIALITE AND MEDIA POOCH...

Tilly Barker (dogtated to Andrew Perrott)

Before you ask: no...I do *not* give autographs. I know that I'm famous(ish), but there are limits.

Did you see me in that photo on page 2? It's a pity that the Boss didn't brush my whiskers beforehand; humans have 'bad hair days' (some do, anyway, but not the Boss...he hasn't any, ha ha ha), but that's nothing compared with 'bad whisker days'. You have *no* idea...

My whiskers are out of the way now, and I can continue with my dogtation. The Boss didn't even have to collar me; I said to him: *come on, it's dogtation time*, and that was it. He was so surprised.

Life has been so busy, what with going to the vet (AP: Tilly's eyesight is slowly deteriorating), going for a shampoo and set, outing and abouting on walks; the Boss calls them saunters because I do a lot of sniffing and resniffing...well, he sends texts and e-mails, which is almost the same thing, isn't it? Sniffing means that I can keep up with friends and discover who's new in the village.

My bezzie, Edie, has visited several times as well. What fun we had watching the Crufts agility trials on the telly!...even though there wasn't a single Westie. We thought that we'd be top dogs at agility, although Edie said something about my bumping into things or missing them completely. I just ignored her; I can see things if I'm close enough to them, and I can *always* find a comfy armchair. We did bark rather a lot, which meant that we had to rest in front of the fire for a while afterwards.

On Tuesday afternoons I go to The Meeting Place at the Village Hall with the Boss. That's a lot of fun because I meet all sorts of people, and Billy the sheepdog, another of my bezzies, is usually there as well. We're good at sponging bits of biscuits and other treats from the unsuspecting; Billy's better at it than me, probably because he's had more practice. He's bigger as well.

There, that's it. My dogtation's done for another three months...bye bye!

## LOCAL FACEBOOK LINKS

- Anglesey Community Noticeboard/Hysbysfwrdd Cymunedol Môn  
[www.facebook.com/groups/205528177434085/](http://www.facebook.com/groups/205528177434085/)
- Friends of Beaumaris  
[www.facebook.com/groups/521368261344315/](http://www.facebook.com/groups/521368261344315/)
- Beaumaris Community Activities and Information/Gweithgareddau Biwmares  
[www.facebook.com/groups/400365856820659/](http://www.facebook.com/groups/400365856820659/)
- Ffrindiau Cwlwm Seiriol Friends  
[www.facebook.com/groups/395263584239092/](http://www.facebook.com/groups/395263584239092/)
- Cymuned Llanddona Community  
[www.facebook.com/groups/llanddona/](http://www.facebook.com/groups/llanddona/)
- Cymuned Llandegfan Community  
[www.facebook.com/groups/1518554195120520/](http://www.facebook.com/groups/1518554195120520/)
- Ffrindiau Llangoed  
[www.facebook.com/groups/1458577214379355/](http://www.facebook.com/groups/1458577214379355/)
- Cymuned Llangoed Community  
[www.facebook.com/groups/Llangoed/](http://www.facebook.com/groups/Llangoed/)
- Pobol Llansadwrn People  
[www.facebook.com/groups/3140572646162274/](http://www.facebook.com/groups/3140572646162274/)
- Hysbysfwrdd Seiriol Noticeboard  
[www.facebook.com/groups/1600203890233039/](http://www.facebook.com/groups/1600203890233039/)

## EDITORIAL INFORMATION AND OTHER 'USEFUL TO KNOW' STUFF

### The Editorial Team

Richard Adams                      Andrew Perrott  
John Briggs                            Owen Williams  
John Nunn                              ✉ [puffinpages@gmail.com](mailto:puffinpages@gmail.com)

### Editorial Policy

- **The Puffin** is a community journal. It does not become involved in matters such as politics, local or national, but is intended to be a means of bringing people and communities together, celebrating our 'sense of community' and the beautiful part of the world in which we live, so please be kind, courteous and respectful. 'Hot' topics related to the local context are fine, but we ask that people respect the fact that alternative views may be valid as well.
- We welcome news, letters and interesting articles, in Welsh and in English, as long as they are attributed to an author; please don't send us anything marked 'not for publication'.
- The views expressed in **The Puffin** do not necessarily represent those of the Editorial Team.
- We review all items for material that is obviously libellous or offensive, but we cannot check for factual accuracy because we might not be sufficiently expert on the topic, and because of time constraints.
- If you have strong feelings about what is said, or is not said, in **The Puffin**, don't bottle it up: get in touch with us or join the group of volunteers who form the Editorial Team who enable its production.

### General information and publication dates

- We will do our best to reply to your e-mails quickly.
- If you e-mail photographs and other pictures to us for inclusion in **The Puffin**, please send them in .jpg format if possible. If you send photographs or documents to us by post, be sure to enclose a stamped, self-addressed envelope so that we can return them to you after they've been scanned.
- The word count per column is c.350 (three-column page) and c.520 (two-column page).
- **The Puffin** is published in:  
**February:** submissions by 1 January  
**May:** submissions by 1 April  
**August:** submissions by 1 July  
**November:** submissions by 1 October

### Submissions and donations by post

- We are happy to receive submissions – and donations, of course! – by post. Please send them to:  
Andrew Perrott  
Glangors  
Llanddona  
Anglesey  
LL58 8TU  
Mark the envelope **The Puffin** and enclose your address, an e-mail address and/or telephone number so that we can let you have an acknowledgement and a 'thank you'.
- If you would like to make a donation by bank transfer, our details are:  
Bank: **NatWest**  
Account name: **The Puffin**  
Account number: **88609782**  
Sort code **54-10-01**

### Sponsorship and advertising

- Please contact us by e-mail if you would like to sponsor **The Puffin** or place an advertisement in it.

### Where to pick up your copy of **The Puffin**

- **Beaumaris**  
ABC Service Station, Gallows Point, Beaumaris LL58 8YH  
Canolfan Beaumaris Leisure Centre, Rating Row, Beaumaris LL58 8AL  
Central Bakery, 22 Margaret Street, Beaumaris LL58 8DN  
Ena's Newsagents, 24 Castle Street, Beaumaris LL58 8AP  
Spar, 11 Castle Street, Beaumaris LL58 8AB  
Town Hall, Castle Street, Beaumaris LL58 8AP (in the entrance lobby)
- **Llanddona**  
The Owain Glyndŵr, Llanddona LL58 8UF  
Wern y Wylan, Llanddona LL58 8TR (at Wern y Wylan Court)
- **Llandegfan**  
Siop Llandêg, Lon Ganol, Llandegfan LL59 5UA
- **Llangoed**  
Morrisons Daily, China House, Llangoed LL58 8NW
- **Penmon**  
The Pilot House Café, Black Point, Penmon LL58 8RR
- **On-line**  
[www.seiriolalliance.co.uk/newsletters/](http://www.seiriolalliance.co.uk/newsletters/)

### Some useful contacts

Alcoholics Anonymous	0800 917 7650
Canolfan Iechyd Beaumaris Health Centre	01248 810818
Canolfan Beaumaris Leisure Centre	01248 811200
Cynllun Tro Da Seiriol Good Turn Scheme	01248 305014
Dŵr Cymru/Welsh Water:	leaks 0800 281 432
	water services and emergencies 0800 052 0130
	sewerage services and emergencies 0800 085 3968
Electricity (SP Energy Networks):	information about power cuts 0800 001 5400
Floodline	0345 988 1188
Gas: National Gas Emergency Service	0800 111 999
Isle of Anglesey County Council:	01248 750057
	Beaumaris library 01248 810659
	Children's Services 01248 752722
	missed waste collections 01248 752860
NHS (NHS Direct closed in 2014):	for non-emergency medical help 111
NSPCC:	help for adults concerned about a child 0808 800 5000
	help for children and young people 0800 1111
Police: non-emergency	101
Police Community Support Officer:	Teleri Jones 07814 646320
Post Office:	customer helpline 0345 611 2970
	Morrisons Daily, Llangoed 01248 490056
	Spar, Beaumaris 01248 810326
RSPCA:	daily, 9.00am-6.00pm 07490 642555
Samaritans:	English language 116123
	Welsh language 0808 164 0123
Ysbyty Gwynedd Hospital	01248 384384