

The Puffin



FREE community magazine • published quarterly

Number 52 • May 2025

Serving...

- Beaumaris
- Glanrafon
- Llanddona
- Llandegfan
- Llanfaes
- Llangoed
- Llansadwrn
- Penmon

...and on-line

Award Winning

PILOT HOUSE CAFE

PIZZA • BURGERS • COCKTAILS

SHAKES • ICE CREAM • DRINKS

What We Offer

Hearty
Breakfasts

Pizzas & Burgers



Welsh Ice Cream

Thickshakes

Delicious Cakes
& Cream Teas

Beach Snacks

Local Draught
Ales & Lagers

Cocktails & Wines

Iced & Hot Drinks

Sweet Shop

Gluten-Free,
Vegan, & Soy-
Free Options

Note: We are open all year round.
Out of season our menu may be limited.
In the colder months enjoy the cosy
ambience with our roaring log burner.



Family-
Friendly



Disabled
Access



Dog
Friendly



WWW.PILOTHOUSECAFE.COM

BLACK POINT • PENMON • ANGLESEY • LL58 8RP



Contents

Page 4

- Introduction: May Musings
- A message from The Puffin's Editorial Team
- What's happening where? Anglesey, Gwynedd

Page 5

- What's happening where? Bangor, Beaumaris

Page 9

- What's happening where? Holyhead, Llanddona

Page 12

- What's happening where? Llanfairpwll, Llangefni, Llangoed

Page 13

- What's happening where? Penmon, Eglwysi Bro Seiriol Churches
- Some useful services: Common Ailments Service

Page 14

- Some useful services: cashpoints, Citizens Advice, defibrillators, library

Page 15

- Some useful services: household waste recycling, mobile banking, mobile Post Office
- Llinos Medi: fy chwe mis cyntaf fel AS

Page 16

- Llinos Medi: my first six months as an MP
- Catherine Wendy Rowlands

Page 17

- Crossword & chess
- World Chess Championship 2024: the youngest ever undisputed Champion

Page 18

- Gŵyl Beaumaris Festival 2025



Page 19

- May's front cover

Page 20

- Nature Notes: Bumblebees, Part 1

Page 21

- Hedges, the countryside and wildlife

Page 22

- Canolfan Hamdden Beaumaris: mwy na chanolfan hamdden yn unig

Page 23

- Canolfan Hamdden Beaumaris: more than just a leisure centre

Page 24

- Llangoed WI
- How to make a silent 999 call

Page 25

- Pryd oedd y tro diwethaf i chi wneud rhywbeth am y tro cyntaf?
- When was the last time you did something for the first time?

Spring is here!

Photographs:
Lambs: Lucy Low
Flowers: Andrew Perrott

Page 26

- Maritime Volunteer Service: Trinity House Grant and RYA Safety Boat Course

Page 27

- Boots rolls out national blister pack recycling scheme
- Wellness: step lightly into summer

Page 29

- Exercise for the over-60s
- Newyddion Eglwysi Bro Seiriol
- Bro Seiriol Churches news
- The National Garden Scheme in North Wales 2025...

Page 30

- The National Open Gardens 2025: cut-out list

Page 31

- ...and in Seiriol Ward
- Seiriol Men's Shed

Page 32

- Neuadd Bentref Llanddona: newyddion

Page 33

- Crossword & chess: solutions
- Llanddona Village Hall: news
- Steddfota yn Llandegfan

Page 34

- Steddfota in Llandegfan
- Merched y Wawr, Llandegfan
- Merched y Wawr, Llandegfan
- Newyddion ddiweddaraf o'r Rhandroedd Biwmares
- Latest news from the Beaumaris allotments

Page 35

- The puffin: a brief life

Page 36

- Cantorion Menai: The Dream of Gerontius
- Cantorion Menai: The Dream of Gerontius
- Storm Darragh a gwlithod

Page 37

- Storm Darragh and slugs
- The Puffin for children: Ben goes a-boating

Page 38

- The Royal National Lifeboat Institution and Anglesey: part 8

Page 40

- The RNLI: lifesaving data 2024, a rescue story and the Mayday Mile

Page 41

- Charles Arnold and the 3-pin 13amp plug and socket
- Letters

Page 42

- Tailpiece: a Waggy Westie takes the helm (with some interference from Little Lucy of the Sharp Teeth)...

Page 44

- Editorial information and other 'useful to know' stuff

Introduction: May Musings

John Nunn

Welcome to **The Puffin** 52. I've been racking my brains to come up with something suitable to introduce this edition, and thought about looking back to see what **The Puffin** has had to say about the amazing birds whose name we've appropriated. We've had articles about the puffins that have adorned our front covers, and an article about the birds themselves which appeared in **The Puffin** 34, November 2020 by Andrew Perrott. Given our connection with puffins, we've decided to reprint it, complete with Femke van Gent's lovely illustrations. You'll find it on page 35.

In the meantime, I found myself pondering whether I could identify any connections between this edition and our namesakes and it turns out I can. This edition should be on-line and in its outlets in May, which is in fact the middle of the puffins' breeding season. After spending most of the year at sea they return to land between March and July, and here we are, also returning, right in the middle of that period, in May. Furthermore, a quick read of our article or any of the many excellent articles on-line will refer you to the loyalty that the birds display to their mates: normally, they mate for life. Well... we try to earn your loyalty by the eclectic mix of articles that we offer. I may be stretching a point here, but I'll risk one more. As birds which mate for life, each 'belongs' to the other, and we hope that you feel that **The Puffin** belongs to you. Certainly, without your input it would be a very thin little item: the fact that it has gone from an eight-pager (**The Puffin** 17, November 2016) to a (this time only!) 44-pager now shows that you, our readers, feel that it is 'your' magazine.

At the time of writing we expect that the Menai suspension bridge will be back to one-way running during the week while the major works to it is finished for it to be at its gleaming, and at night, magnificently illuminated, best in time for its 200th anniversary in 2026; it was opened on 30 January 1826. Our pretty pointy piece of Anglesey doesn't include Menai Bridge, but most of us will cross it many times in a year simply going to and fro... We will all be affected by the delays during week-day crossings and it will be easy to get irritated by them but, as the saying goes, "needs must..." It'll all be worth it in the end. Many "old" bridges are reduced to pedestrian use only or even just available for a photo, but here we get to drive across a bridge which has stood (with upgrades) for two centuries.

Looking further afield from our part of the Anglesey coast we have Aberlleiniog and Beaumaris Castles, Plas Newydd, the Marquess of Anglesey's Column, a

statue of Lord Nelson, the Britannia Bridge, Red Wharf Bay (where development work on the Land Rover took place) Plas Cadnant's Gerddi Cudd/Hidden Gardens, Halen Môn, to mention just a few... puffins and Puffin Island... and the longest place name in Europe! Is that something to crow about or what?

We hope that you have a Sprightly Spring and a Simmering Summer!

A message from The Puffin's Editorial Team

We hope that you enjoy reading **The Puffin** every quarter.

We are a group of seven unpaid volunteers. We do everything connected with the publication of **The Puffin**. We have no regular income, so all of our funds have to be raised through donations, advertising and occasional grants.

Like you, our readers, we are affected by ever-increasing costs. Each copy of **The Puffin** that you read costs just over £1 to produce and print. If you are able to do so we would appreciate any contribution that you can make towards our costs.

We are determined that **The Puffin** continue to be free of charge, and your support will be greatly appreciated, whether it be a one-off donation or a commitment to providing a regular financial contribution.

We are happy to receive donations by post. Please send them to:

Andrew Perrott
Glangors
Llanddona
Anglesey
LL58 8TU

Mark the envelope **The Puffin** and enclose your address, an e-mail address and/or telephone number so that we can let you have an acknowledgement and a 'thank you'.

If you would like to make a donation by bank transfer, our details are:

Bank: **NatWest**
Account name: **The Puffin**
Account number: **88609782**
Sort code **54-10-01**

Thank you!

What's happening where?

Note

We do our best to ensure that dates, times and so on are accurate. Information can change, though, so be sure to check beforehand.

Anglesey

- **Coed Lleol/Small Woods:** Small Woods is the national organisation

for small woodlands, and has a significant track record in managing Social Forestry projects: promoting sustainable management of small woodlands for social, environmental and economic benefit.

Coed Lleol/Small Woods in Wales was established in 2002 and helps to improve the health and wellbeing of people across Wales through woodland- and nature-based activities.

All of our sessions are free and open to all, but booking is essential.

For updates on any forthcoming events or sessions, e-mail Vivienne Plank to be added to our Anglesey newsletter:

✉ vivienneplank@smallwoods.org.uk

Follow us on Facebook:

📘 Coed Lleol Anglesey
www.facebook.com/CoedLleolAnglesey/

or visit our website:

📘 Coed Lleol/Small Woods
www.smallwoods.org.uk/en/coedlleol/



**CoedLleol
SmallWoods**

Anglesey, Gwynedd

- **Anglesey & Gwynedd Widowed Group:** please note that this is *not* a dating site; the organisers are volunteers and the group is not a charity.

It's a group for widows and widowers aged over 50 (suggested age only) who live permanently in the Anglesey, Bangor and Caernarfon (Gwynedd) areas.

We meet for regular get-togethers: coffee, lunch, days out, leisure activities, evenings out, theatre, concerts, coach trips and so on, and holidays, UK and abroad, and cruises as well.

This is not a support group, just a group of people who have been through the loss of a spouse or long-term partner, and who can empathise with each other but are ready to start enjoying life again.

We use www.meetup.com for information about events and to keep in touch. Search *Anglesey & Gwynedd widowed* and you'll find us.

We are a bilingual group, with membership at roughly 50/50, so we organise Welsh events as well as English.

If you'd like more information please contact me, Lyn Roberts.

www.seiriolalliance.co.uk/newsletters/

☎ 07474 224246

✉ lyn2910@yahoo.co.uk

- **Carers Outreach Service:** do you look after someone?

Carers outreach Service provides information and support for relatives, friends or neighbours.

Carers Outreach Service:

- Is the first port of call for carers
- Is a voice for carers
- Ensures a fair deal for carers
- Puts carers first

in Anglesey, Gwynedd and Conwy.

For more information:

☎ 01248 370797

🌐 www.carersoutreach.org.uk

✉ help@carersoutreach.org.uk

🏠 Unit G1, Intec
Parc Menai
Bangor
LL57 4FG



Bangor

- **Cantorion Menai:** Sunday 8 June, Neuadd Prichard Jones Hall, Bangor University: Cantorion Menai will be performing Elgar's 'The Dream of Gerontius'.

This is a not-to-be-missed event: a collaboration with Bangor University, the choir of 181 singers including the Liverpool Welsh Choral and Côr Cadeirlan Sant Deiniol/Saint Deiniol Cathedral Choir, Bangor, with the Bangor University Symphony Orchestra's 60 players.

Conductor: Gwyn L Williams.

There's more on page 36.

Tickets: £25, from members or Pontio.

Beaumaris

- **Royal Anglesey Yacht Club:** The Royal Anglesey Yacht Club (RAYC) can trace its roots back to 1802 when the Beaumaris Book Society was founded at Ye Olde Bulls Head Inn, Beaumaris.

In 1826 the Society moved to Green Edge, where the club house is today. Members of the Society played a prominent part in the Beaumaris regatta of 1830 and in the years to come. In 1885, the year after Bangor University was established, the club became the RAYC after Queen Victoria granted the club a Royal Warrant.

The RAYC has two adopted classes of yacht: the Fife one Design and the Menai Strait One Design.

puffinpages@gmail.com

🏠 Royal Anglesey Yacht Club
6/7 Green Edge
Beaumaris
Anglesey
LL58 8BY

🌐 <https://royalangleseyyc.org.uk>

✉ secretary@royalanglesey.org.uk

Menai Strait Regattas 2025: visit the Regattas website for more information.

🏠 Menai Strait Regattas 21st July to 2nd August 2025
<https://menaistraitregattas.org.uk>



- **Clwb Rhwyfo Beaumaris Rowing Club:** there's a long history of competitive rowing on the Strait. The Club runs taster events during April and September for people to learn about, and have a go at, rowing a Celtic. It doesn't matter if you've never rowed before; we'll show you the ropes.

Visit our website if you'd like to know more about us.

🌐 www.beaumarisrowingclub.org.uk/



- **Hwyllo Treftadaeth Afon Menai:** mae Hwyllo Treftadaeth Afon Menai (HTAM) yn Elusen Gofrestredig, wedi'i lleoli yn Gallows Point, Biwmares.
Un o brif flaenoriaethau HTAM yw cadw'r hyn sydd yn ôl pob tebyg yn un o'r fflydoedd treftadaeth hynaf o gychod hwyllo yn y byd, ar yr un pryd yn cynnig hwyllo at ddibenion iechyd a lles, felly... dewch i hwyllo gyda ni!... naill ai fel profiad unwaith ac am byth, neu efallai y byddwch chi'n cael y byg ar gyfer hwyllo ac eisiau cymryd mwy o ran a hwyllo'n fwy rheolaidd.

Rydym wedi cynhyrchu ein rhaglen hwyllo ar gyfer 2025, felly os hoffech ragor o wybodaeth e-bostiwrch Victoria Craig at vcraig.mshs@yahoo.co.uk.

Darllenwch fwy am HTAM ar dudalen 25.



- **Menai Strait's Heritage Sailing:** Menai Strait's Heritage Sailing

(MSHS) is a Registered Charity, based at Gallows Point, Beaumaris.

One of MSHS's main priorities is the preservation of what is probably one of the oldest heritage fleets of sailing yachts in the world, at the same time offering sailing for health and wellbeing purposes, so... come and sail with us!... either as a one-off experience, or you may just get the bug for sailing and want to get more involved and sail more regularly.

We've produced our sailing programme for 2025, so if you'd like more information please e-mail me, Victoria Craig, at vcraig.mshs@yahoo.co.uk.

Read more about MSHS on page 25.

- **Beaumaris Cricket Club:** we welcome new members; our average age is somewhere around 50, a few younger and some older! If you'd like to join us give one of us a call:

Chairman: Ian Gorst Jones,

☎ 01248 811248

Captain: David Graves,

☎ 07851 632881

Vice-Captain: Evan Hughes,

☎ 07999 505001

Match organiser: Philip Lewis,

☎ 07484 262297

🌐 www.facebook.com/people/Beaumaris-Cricket-Club/100057043976040/

- **Beaumaris Film Night:** put the first Thursday of every month in your diary! Have a look below at what's coming in the next three months.

Refreshments are available from 7.00pm; the film starts at 7.30pm. Tickets are still just £5 each, and are available in advance from reception, or telephone to book.

☎ 01248 811200

Volunteers are always welcome; please contact Stephen Marsden for more information.

☎ 07774 699685

Put these dates in your diary...

- **1 May: A Real Pain (2024)**, starring Jesse Eisenberg, Kieran Culkin, Olha Bosova.



Mismatched cousins reunite for a tour through Poland to honour their beloved grandmother; old tensions resurface against the backdrop of their family history. (1h 30m; 15)

Tip Top Tiling

"Treating every home like it's our own"

Portfolio and tiling ideas
available on



All aspects of tiling work

kitchen splashbacks • bathrooms • wet rooms
floors & walls, internal & external
installation of electric underfloor heating

Working with all tile types

ceramic • porcelain • mosaic
limestone • granite • travertine
marble • slate

Repair work undertaken

including resiliconing, regrouting
and replacing damaged tiles

14 years' tiling experience

Contact Geoffrey Lunn

E-mail tiptoptiling91@outlook.com

Mobile 07713 840964

Anglesey-based (Rhostrehwfa), covering

Anglesey • Holyhead • Bangor • Caernarfon
surrounding areas

- **5 June:** *Conclave* (2024), starring Ranulph Fiennes, Stanley Tucci, John Lithgow.



When Cardinal Lawrence is tasked with leading the selection of a new Pope, he finds himself at the centre of a web of conspiracies and intrigue that could shake the very foundation of the Catholic Church. (2h 00m; 12A)

- **3 July:** *We Live in Time* (2024), starring Andrew Garfield, Florence Pugh, Grace Delaney.



After an unusual encounter, a talented chef and a recent

divorcée fall in love and build the home and family they've always dreamed of, until a painful truth puts their love story to the test. (1h 48m; 15)

- **7 August:** *Small Things Like These* (2024), starring Cillian Murphy, Eileen Walsh, Emily Watson.



In 1985 devoted father Bill Furlong discovers disturbing secrets kept by the local convent and uncovers shocking truths of his own. (1h 38m; 12A)

- **RNLI: volunteers wanted!** The RNLI is working hard to make itself inclusive, with the Fundraising Team, shop helpers and crews all working together as a team.

We'd give a big welcome to anyone who would like to volunteer in any capacity.

If you're interested do call in at the RNLI shop at the boathouse or

telephone Valary Wakefield on 01248 811375.

- **May Day stalls:** Saturday 24 May, 10.00am-4.00pm.

Cakes, tea and coffee, knitted goods, cards, fancy goods, plants; baked goods with a 'Yellow Welly' theme; Welly Throwing.

- **Strawberry Fayre:** Saturday 5 July, 10.00am-4.00pm.

Cakes, tea and coffee, knitted goods, cards, fancy goods; baked goods with a 'Strawberry Theme'.

- **Beaumaris Lifeboat Day:** Saturday 23 August, 10.00am-4.00pm.

Cakes, tea and coffee, knitted goods, cards, fancy goods; Children's and Adult Tombola, Lifeboat Stations card. Stalls on the Green, stocks, Lifeboat Launches.

There may be other events, but these have yet to be confirmed.

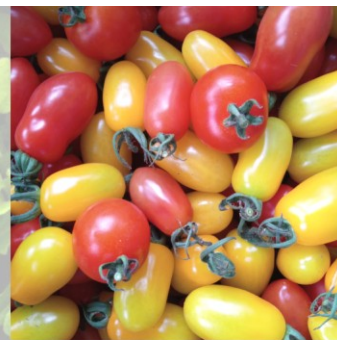
We would appreciate gifts for the tombola; small prizes up to the value of about £2.00.

- **Bonfire Night:** date has yet to be confirmed.

www.seiriolalliance.co.uk/newsletters/



LLYSIAU FFRES LLEOL LOCAL FRESH VEGETABLES



**Bocsys o £11 - Dewiswch focs safonol neu addaswch y cynhwysion - Cludiant ar ddydd lau
- Archebu hyblyg: wythnosol neu pythefnosol a cael seibiant bryd bynnag y dewiswch**

**Veg boxes from £11 - Choose a standard box or customise the contents - Delivery on
Thursdays - Flexible ordering: weekly or fortnightly and pause whenever you choose**



**Archebwch ar / Order at
llysiaumenai.cymru**



@llysiau_menai



llysiau menai



Keep a lookout for notices in Beaumaris, and check Facebook regularly.

Beaumaris RNLI Lifeboat
www.facebook.com/beaumaris.rnli.lifeboat/

Find my nearest lifeboat station
<https://rnli.org/find-my-nearest/lifeboat-stations>

See also pages 38 and 40.



Lifeboats

- **Beaumaris Over 50s Club:** you're welcome to join us if you're 50+ and live in or near Beaumaris.

Club meetings take place at 2.00pm on the last Monday of the month.

Annual cost of membership is only £5; contributions are taken at each meeting towards tea/coffee and raffle prizes.

We extend a warm welcome to new and old members.

- **19 Mai/19 May** (Bank Holiday on 26 May):
Canu er Pleser.
Singing for Pleasure.
- **30 Mehefin/30 June:**
Gitarwyr (Chris a Sue) a Te Mefus.
Guitarists (Chris and Sue) and Strawberry Tea.

- **Gorffennaf/July, Awst/August:**
Cyfnod gwyliau.
Holiday period.

We had a very interesting talk from Henry Chesterton of Menai Strait's Heritage Sailing at our end of February's meeting, and lots of members dressed up for the Easter Bonnet competition at the end of March, when we also had quiz questions to answer.

For more details, please contact the Chair, Mike Davies.

☎ 01248 812157, 07483 827069

✉ dmikedmail@gmail.com

📧 The Iorwerth Rowlands Centre
Steeple Lane
Beaumaris
LL58 8AE

- **Beaumaris Singing For Pleasure Group:** do you want to:

- Improve your memory?
- Relieve stress and anxiety?
- Boost your immune system?
- Improve your lung function?
- Uplift your mood?
- Make new friends?

...and, most importantly, have fun?

If the answer's YES, join us at the Iorwerth Rowlands Centre on Mondays, 11.00am-12.00 noon.

£2.50 per session, including tea, coffee, biscuits. New members will be very welcome!

For more information, please contact Mike Davies

☎ 01248 812157, 07483 827069

✉ dmikedmail@gmail.com

📧 The Iorwerth Rowlands Centre
Steeple Lane
Beaumaris
LL58 8AE

- **Menopause Café:** the first Saturday of the month at Canolfan Hamdden Beaumaris Leisure Centre, 10.00am-12.00 noon.

It's a warm, respectful, welcoming space for those who are impacted by anything that relates to menopause, as part of providing community wellbeing places.

Entry is £2.50, the proceeds to go to The Canolfan Development Fund.

✉ enquiries@canolfanbeaumaris.org.uk

Keep a lookout for any changes to our dates and hours in 2025.

- **Dancing at the Canolfan!** Want to learn to dance? You can dance but want to improve?

Come along to Caroline's friendly classes at Canolfan Hamdden Beaumaris on Fridays, 7.00pm-9.00pm; everybody welcome.

☎ 01248 811200

✉ enquiries@canolfanbeaumaris.org.uk

- **Seindorf Beaumaris Band events:** Seindorf Beaumaris Band is based in the historic town of Beaumaris on the Isle of Anglesey.

At the forefront of local traditional music making, the Band is a prominent force within the community and has been part of its heritage for over a century.

The bands are often out and about performing locally. Follow their activities by keeping an eye on social media and local noticeboards.

In particular, several of the bands will be competing as part of Eisteddfod Môn at Canolfan Hamdden Beaumaris Leisure Centre on Friday

- **Eisteddfod Môn Bro Seiriol 2025:** Monday 12 May-Saturday 17 May, various locations.

See the advertisements below.

✉ **eisteddfodmon2025@gmail.com**

📄 Cyhoeddi Eisteddfod Môn Bro Seiriol 2025 ym Miwmares
<https://mon.360.cymru/2024/05/15/cyhoeddi-eisteddfod-seiriol-2025-miwmares/>

📄 Anglesey Bro Seiriol Eisteddfod 2025 announced in Beaumaris
<https://mon.360.cymru/2024/05/15/cyhoeddi-eisteddfod-seiriol-2025-miwmares/>

art and cabaret. Regardless of whether you're a music aficionado, a lover of thought-provoking discussions, or simply seeking inspiration, this Festival has it for you.

Get your diary out and go to page 18, where there's more about what's on, and visit our website for full details. Don't miss out on this unforgettable experience!

Booking and venues:

📄 Gŵyl Beaumaris Festival
www.beaumarisfestival.org

📄 Gŵyl Beaumaris Festival: tickets
www.beaumarisfestival.org/buy-tickets



Eisteddfod Môn Bro Seiriol 2025

- **Neuadd Bentref Llangoed Village Hall •**
Dydd Llun 12 Mai, 6.30yh
Noson Wobrwyo
Celf a Chrefft
- **Neuadd y Plwyf Llandegfan Parish Hall •**
Dydd Mawrth 13 Mai, 7.00yh
Seremoni Wobrwyo
Dysgwyr y flwyddyn
Adloniant gan Wil Tân
Mynediad £5
- **Canolfan Hamdden Beaumaris Leisure Centre •**
Dydd Gwener 16 Mai, 5.00yh
Eisteddfod Ieuencid ac Offerynnol
Ieuencid 14-19 a Bandiau
- **Canolfan Hamdden Beaumaris Leisure Centre •**
Dydd Sadwrn 17 Mai, 9.00yb
Eisteddfod
Ysgolion Cynradd BI 7-9 ac Oedolion
Seremoni Cadeirio

Diddordeb mewn stiwardio neu cystadlu?

Manylion cyswllt
eisteddfodmon2025@gmail.com



Eisteddfod Môn Bro Seiriol 2025

- **Neuadd Bentref Llangoed Village Hall •**
Monday 12 May, 6.30pm
Awards Night
Arts and Crafts
- **Neuadd y Plwyf Llandegfan Parish Hall •**
Tuesday 13 May, 7.00pm
Awards Ceremony
Learner of the year
Entertainment by Wil Tân
Admission £5
- **Canolfan Hamdden Beaumaris Leisure Centre •**
Friday 16 May, 5.00pm
Youth and Instrumental Eisteddfod
Youth 14-19 and Bands
- **Canolfan Hamdden Beaumaris Leisure Centre •**
Saturday 17 May, 9.00am
Eisteddfod
Primary Schools Years 7-9 and Adults
Chairing Ceremony

Interested in being a steward or competing?

Contact details
eisteddfodmon2025@gmail.com

evening, 16 May.

Also, join us at the Canolfan on the evening of Saturday 12 July for our annual Summer Concert!

✉ Seindorf Beaumaris Band
Canolfan Gerdd
New Street
Beaumaris
Anglesey
LL58 8EL

✉ **post@beaumarisband.org.uk**

📄 Seindorf Beaumaris Band
www.beaumarisband.org.uk

📄 Seindorf Beaumaris Band
www.facebook.com/beaumarisband/

See also page 33 and **The Puffin** 51, page 23.



- **Gŵyl Beaumaris Festival 2025:** get ready to immerse yourself in celebrating seven days of culture and creativity at Gŵyl Beaumaris Festival 2025!

From 21 May to 27 May, Beaumaris will come alive with world-class jazz, the elegance of opera, engaging talks, mesmerising orchestral, band and choral performances, as well as

📄 Canolfan Hamdden Beaumaris Leisure Centre
Rating Row
Beaumaris
Anglesey
LL58 8AL

☎ 01248 811200

📄 Bulkeley Hotel
Castle Street
Beaumaris
Anglesey
LL58 8AW

📄 Iorwerth Rowlands Centre
Steeple Lane
Beaumaris
Anglesey
LL58 8AE

www.seiriolalliance.co.uk/newsletters/

☒ Church of St Mary & St Nicholas
Church Street
Beaumaris
Anglesey
LL58 8AB



- **Clwb Inner Wheel Bangor:** bydd Clwb Inner Wheel Bangor yn cynnal Te Prynhawn gyda tombola yn cynnwys gwobrau cyffrous; i'w ddal ar dydd Sadwrn 10 Mai, 2.00yp-4.00yp yng Nghanolfan Hamdden Beaumaris. Elw tuag at Arthritis Action, Digartref a'r Ganolfan.

Tocynnau £10; gellir eu prynu yn y Ganolfan neu yn Ena's Newsagents, Beaumaris.

☒ Canolfan Hamdden Beaumaris
Leisure Centre
Rating Row
Beaumaris
Anglesey
LL58 8AL

☎ 01248 811200

☒ enquiries@canolfan.beaumaris.org.uk

☒ Ena's Newsagents
24 Castle Street
Beaumaris
Anglesey
LL58 8AP



- **Inner Wheel Club of Bangor:** the Inner Wheel Club of Bangor is holding an Afternoon Tea with a tombola of exciting prizes; to be held on Saturday 10 May, 2.00pm-4.00pm at Canolfan Hamdden Beaumaris. Proceeds from the event go to Arthritis Action, Digartref and Canolfan Hamdden Beaumaris.

Tickets £10 each; may be purchased at the Canolfan and Ena's Newsagents, Beaumaris.

☒ Canolfan Hamdden Beaumaris
Leisure Centre
Rating Row
Beaumaris
Anglesey
LL58 8AL

☎ 01248 811200

☒ enquiries@canolfan.beaumaris.org.uk

☒ Ena's Newsagents
24 Castle Street
Beaumaris
Anglesey
LL58 8AP

- **Canolfan Hamdden Beaumaris Leisure Centre:** There's so much

happening at Canolfan Hamdden Beaumaris that we don't have room for it here.

Turn to pages 22-23 to read more about what's happening at the Canolfan.

☒ Canolfan Hamdden Beaumaris
Leisure Centre
Rating Row
Beaumaris
Anglesey
LL58 8AL

☎ 01248 811200

☒ enquiries@canolfanbeaumaris.org.uk

☒ Canolfan Beaumaris
www.canolfanbeaumaris.org.uk/



- **Seiriol Good Turn Scheme:** if you live in the Seiriol Ward area (Beaumaris, Glanrafon, Llandegfan, Llanddona, Llanfaes, Llangoed, Llansadwrn and Penmon) the Seiriol Good Turn Scheme may be able to help you.

The services offered by the Scheme are provided by volunteers, and offer help to any person living in the Seiriol Ward who, due to illness, incapacity or some other need, may benefit from the help that is available.

If you feel that the Scheme could help you please telephone us and we will arrange a home visit to discuss your needs.

☎ 01248 305014
Monday-Friday,
9.00am-5.00pm



- **Dancing at the Canolfan!** Want to learn to dance? You can dance but want to improve?

Come along to Caroline's friendly classes at Canolfan Hamdden Beaumaris on Fridays, 7.00pm-9.00pm; everybody welcome.

☎ 01248 811200

☒ enquiries@canolfanbeaumaris.org.uk

- **Beaumaris Makers Market:** Castle Square, Beaumaris LL58 8AL (in front of the Castle Court Hotel, adjacent to the castle).

☒ Beaumaris Makers Market
www.facebook.com/beaumarismakersmarket/

- **Beaumaris Artisan Market:** Rating Row, Beaumaris LL58 8AP (in front of the David Hughes Community Centre).

☒ Beaumaris Artisan Market
<https://beaumarisartisanmarket.blogspot.com>

☒ beaumariswelshartisanmarket@outlook.com

Holyhead

- **Canolfan Ucheldre Centre:** Holyhead may be 'over there' on the other side of Anglesey, but Canolfan Ucheldre Centre has a lot to offer the residents of Anglesey and those further afield.

Ucheldre is a leading performing and visual arts centre housed in a former convent chapel that sits within its own grounds and gardens.

Find out about what's happening at Canolfan Ucheldre Centre via the links below,

☒ Canolfan Ucheldre Centre
Millbank
Holyhead
Anglesey
LL65 1TE

Monday-Saturday
10.00am-5.00pm
Sunday
2.00pm-5.00pm

☎ 01407 763361

☒ box@ucheldre.org

☒ Ucheldre
<https://ucheldre.org>

☒ Ucheldre Holyhead
www.facebook.com/ucheldre.holyhead/



Llanddona

- **Neuadd Bentref Llanddona Village Hall:** we are a small and dedicated group of Committee Members and volunteers, and we would love to welcome more people on board!

Please contact us if you'd like to become involved in any way.

The Hall is available for hire. Please contact us if you would like more information or to make a booking.


☒ secretary@neuaddbentrefllanddona.co.uk

☎ 07733 176004, 07768 018370

☒ Neuadd Bentref Llanddona
Village Hall
Llanddona
Anglesey
LL58 8TS

(continued on page 11)

LLANDDONA RALI HEN TRACTOR



OWAIN GLYNDŴR
LLANDDONA

GORFFEN

OWAIN GLYNDŴR
LLANDDONA

DECHRAU

GLAN-YR-AFON

LLANGOED

BEAUMARIS

10:00 @ Owain Glyndwr pub, LL58 8UF
baps cig moch, raffi, stondin cacennau

11:00 rali'r tractorau'n cychwyn

16:00 @ Owain Glyndwr pub
rhostio mochyn, Cerddoriaeth Fyw

16 Awst

Eglwys St Iestyn ac elusennau lleol
am ragor o fanylion : Lucy Low 0777 447 2511

LLANDDONA VINTAGE TRACTOR RALLY



OWAIN GLYNDŴR
LLANDDONA

FINISH

OWAIN GLYNDŴR
LLANDDONA

START

GLAN-YR-AFON

LLANGOED

BEAUMARIS

10:00 @ Owain Glyndwr pub, LL58 8UF
bacon baps, stalls, raffle & cakes

11:00 tractors depart for rally

16:00 @ Owain Glyndwr pub
Hog roast, Live Music

AUGUST 16

St Iestyn's Church and Local Causes
for more info contact : Lucy Low 0777 447 2511

FUN DOG SHOW



JUNE 21 MEHEFIN

CLASSES

Gast Ddelaif • Prettiest Girl
Ci Harddaf • Most Handsome Boy
Ci bach pertaf (o dan 12 mis) • Cutest Puppy (under 12 months)
Ci Hŷn Gorau (yn hŷn na 10 oed) • Best Golden Oldie (over 10)
Cynffon Prysuraf • Waggiest Tail
Ci blêraf • Scruffiest Pooch
Cast Gorau • Best Trick
Ci Gorau yn Dal Bisgedi • Best Biscuit Catcher
Ci yr hoffai'r Barnwr • Dog the Judge would
Fynd Adref • most like to take home
Gorwedd i Gerdd • Musical Lie Downs
Ras Llwy ac Wy • Egg & Spoon Race

1st

12:00 PM
Lluniaeth a Chofrestru
Refreshments and Registration

1:00 pm
Dog show

i'w gynnal ar
to be held at
Neuadd Bentref Llanddona Village Hall
LL58 8TS

St Iestyn's Church Eglwys St Iestyn
and local causes ac elusennau lleol
for more info contact : Lucy Low 0777 447 2511 : am ragor o fanylion

Modern technology driving you crazy?
Want to be more computer savvy?



Introducing our new IT Room
at Neuadd Bentref
Llanddona Village Hall

- Free Professional tuition
- An informal, friendly atmosphere
- Notebook computers provided

Weekly Friday classes will commence
as soon as we fill 10 places

For more information and to secure your place contact:

Miriam 07733 176 004
or Pat 07768 018 370

Basic IT Training

Learn new skills
to boost your IT
confidence

Conquer your
mobile phone

Stay safe on line

Informal and
friendly

CLASSES & USE OF
EQUIPMENT
COMPLETELY FREE OF
CHARGE



(from page 9)

Neuadd Bentref Llanddona
Village Hall
www.facebook.com/llanddonavillagehall/

Cymuned Llanddona Community
www.facebook.com/groups/llanddona/

Note

Events are at Neuadd Bentref Llanddona Village Hall unless stated otherwise.

Be sure to keep your eye on social media, notice boards and The Puffin for updates, and see page 32.



- **Caffi Ni:** every Friday, 11.45am-2.00pm.

Come and enjoy a home-cooked two-course meal and a drink in a relaxed and friendly atmosphere for only £8 per person.

A special roast dinner and dessert are available on the first Friday of every month.

All food is freshly prepared on the premises by volunteers.

Booking is advisable; please telephone Pat on 07768 018370.

- **Paned a Sgwrs:** every Tuesday, 2.00pm-3.00pm.

Improve your Welsh-speaking skills with this small, friendly group over a complimentary paned/cuppa and biscuits. All levels of Welsh speakers are welcome.

Sessions are informal so that people can 'drop in' for a quick chat or stay for the full session if preferred.

For more information contact Gill Vaughan or Sheila Healey.

07925 184476
Gill Vaughan
01248 810619
Sheila Healey



- **Caffi Cofio:** the first and third Wednesdays of the month, 2.00pm-4.00pm.

Caffi Cofio is provided by Carers Trust North Wales Crossroads Care Services. It's a friendly service for people who live with memory loss, and their carers.

Transport to and from the group can be arranged, organised by the Seiriol Good Turn Scheme for a small fee.

Please telephone for more

puffinpages@gmail.com

information or to book a place.

01492 542212



- **Gong Bath:** the first Tuesday of the month, starting at 7.00pm.

It's relaxation and meditation through sound... Lying on a mat, you close your eyes and relax for an hour whilst being bathed in powerful sound waves.

Please contact me, Steph Healy, for more information or to book a place.

07534 118899

pure.sound@outlook.com

- **Dru Yoga:** every Thursday, 9.30am-10.30am with Saroj.

A gentle form of yoga involving a lot of stretching; can be done whilst sitting on a chair if needed. Suitable for beginners and advanced practitioners.

All are welcome: £5.00 per session.

- **Clwb Ffermwyr Ifanc Llangoed/ Llangoed Young Farmers Club:** meets every Monday, 7.45pm (in Llanddona, not in Llangoed).



- **Llanddona Writers Group:** thinking of a family memoir, or short story, or just the chance to do a little writing alongside friends?

We meet every three weeks on a Friday at 11.00am.

We enjoy hearing from and encouraging each other, and maybe having a try at something new.

Why not come along and see...

If you'd like to know more, please contact Stephen Marsden.

07774 699685.



- **Llanddona Table Tennis Group:** we are a friendly social table tennis group who play every Monday, 10.00am-12.00 noon in the Hall. We welcome new players of any ability. There are usually around 12 players of mixed abilities and roughly equal numbers of men and women. We have three tables and have bats and balls that everyone can use. We play for most of the two hours, but do stop for tea/coffee halfway through.

Please contact Mark Simpson if

you're interested or have any questions.

marksimpson@hotmail.com

07785 762580



- **Nifty 60s:** every Wednesday, 10.00am-11.00am. Come and improve your core strength, flexibility, balance, mental and physical strength and mental wellbeing. This successful class aims to reduce slips, trips and falls.

Begin your journey to a better version of yourself for only £2.00 per session. There's no need to book: just show up!

Read more about it on page 32.

- **Happy Hound Gang:** every Monday, 1.00pm-7.00pm.

Puppy and dog training and socialisation, including dealing with problematic behavioural issues.

Booking a slot is essential; please contact Laura Sutton:

07588 651597

laura@happyhoundgang.co.uk

- **Bingo:** Thursday 15 May; doors open at 6.30pm.

£2.00 entry, food and bar available.

- **Numeracy & IT skills:** come and check out the new IT facilities at the Hall; see also page 10.

For more information contact Paul Gash:

07714 017886

paul.gash@me.com

- **Swishing Event:** swap your second-hand gear: Sunday 4 May, 7.00pm-11.00pm. Organised in aid of Asthma + Lung UK.

For more information contact Catherine Unwin:

07775 502704

www.asthmaandlung.org.uk

- **Exercise-a-thon:** Sunday 25 May, start 12.00 noon. Organised in aid of Asthma + Lung UK.

For more information contact Catherine Unwin:

07775 502704

www.asthmaandlung.org.uk

- **VE Day:** Saturday 3 May, 1.00pm-3.00pm: afternoon tea arranged in conjunction with the Senior Citizens Committee.

- **Mindfulness:** please note that this will not take place again until the autumn, when it will return by popular demand.

- **Village Knit Club:** every Monday at yr Owain Glyndŵr, at 7.15pm... looking forward to seeing you all!

For more information contact Meg Marsden.

☎ 07913 223435

- **Fun Dog Show and Summer Fair:** Saturday 21 June, 10.00am-2.00pm; entry is free.

There will be produce stalls, crafts, artisan crafts, food, drink and cakes... and the Fun Dog Show, of course!

The Fun Dog Show details are given in the poster on page 10, so start brushing up your dogs' tricks!

- **National Open Garden Scheme 2025:** Saturday 12 July, 11.00am-4.00pm, following a hugely successful village opening in 2024, the National Open Garden Scheme (NGS) will return to Llanddona again, with nine gardens participating. Put the date in your diary!

Go to pages 29-31, where you'll find more detailed information, including a list of all the NGS openings in Anglesey and Gwynedd.

Food and soft drinks will be available at various venues.



- **Rali Tractor Llanddona Tractor Rally 2025:** put Saturday 16 August in your diary: that's the date of this year's Rali/Rally...now in its fifth year!

Please come and support us, and enjoy the spectacle of tractors of all sizes, and entertainment as well, at yr Owain Glyndŵr, Llanddona.

- 10.00am: Owain Glyndŵr opens; refreshments all day, including bacon baps, tea, coffee, and Hogs Môn will be hog-roasting in the evening
- 11.00am: tractors depart
- 4.00pm(ish) on: tractors return.

Entertainments:

- 3.00pm: Miv, Kev and Dave
- 5.00pm: charity raffle, prizes
- 6.00pm: Elliw Mair a Carwyn
- 7.00pm: Wil Tân & Teulu
- 8.30pm: Adelphi & Guests.

Funds raised will support good causes, including:

- Blaen y Coed Centre for adults with learning difficulties, Llangoed.
- Clwb Ffermwyr Ifanc Llangoed/ Llangoed Young Farmers Club, based at Neuadd Bentref Llanddona Village Hall, yr Hen Ysgol, Llanddona

- St Iestyn Church Restoration.

There may be changes to events and entertainments...

Don't miss it!



- **Yr Owain Glyndŵr:** Community Pub Hero Award Winner 2024!

Contact us for information about what's on.

☎ 01248 810710

📍 The Owain Glyndŵr
Llanddona
Anglesey
LL58 8UF

✉ contact@ogdllanddona.co.uk

📌 Cymuned Llanddona
Community
www.facebook.com/groups/llanddona/

Llanfairpwll

- **Marquess of Anglesey's Column:** climb the Column's 115 steps for spectacular views over Anglesey, the Menai Strait and Snowdonia.

✉ post@angleseycolumn.org

☎ 07748 807402

📍 Tŵr Marcwis/Anglesey Column
www.angleseycolumn.com

📍 Marquess of Anglesey's Column
Parc Tŵr
Llanfairpwll
Anglesey
LL61 5NJ

Opening times:

Wednesday-Sunday
April-September
9.00am-5.00pm
October-March
10.00am-4.00pm

📌 Marquess of Anglesey's Column
https://en.wikipedia.org/wiki/Marquess_of_Anglesey%27s_Column



Llangefni

- **Oriel Môn:** Llangefni is another place that's not on our immediate doorstep. Like Holyhead's Canolfan Ucheldre Centre, though, it has a lot to offer the residents of Anglesey and those further afield.

Oriel Môn is a museum and art gallery, and Oriel Kyffin offers exhibitions of national and international significance.

Find out about what's happening via the links below.

📍 Oriel Môn
Rhosmeirch
Llangefni
Anglesey
LL77 7TQ

Opening times:

Tuesday-Sunday
10.00am-5.00pm

☎ 01248 724444

✉ orielynysmon@anglesey.gov.uk

📍 Oriel Môn
www.orielmon.org/

📍 Oriel Môn
www.facebook.com/orielmon/



Llangoed

- **Neuadd Bentref Llangoed Village Hall:** Llangoed Village Hall is home to community events, concerts, performances, films, health and wellbeing.

It is available for parties, functions and weddings.

Please contact us for more information or to make a booking.

✉ info@llangoedvillagehall.com

Visit our website and Facebook page for more details.

📍 www.llangoedvillagehall.com

📍 www.facebook.com/llangoed.villagehall

📍 www.instagram.com/llangoedvillagehall

Sign up for our newsletter!

📍 www.llangoedvillagehall.com/subscribe

Note

Events are at Neuadd Bentref Llangoed Village Hall unless stated otherwise.

Be sure to keep your eye on social media, notice boards and **The Puffin** for updates.

- **Regular events:**

- **Yoga:** Mondays, 6.30pm-7.45pm

✉ emilykyleyoga@gmail.com

- **Pilates:** Tuesdays, 9.30am-10.30am

✉ andreacross@hotmail.co.uk

- **Clog dancing:** Tuesdays, 7.30pm-8.00pm

✉ info@llangoedvillagehall.com

- **Zumba:** Wednesdays, 6.30pm-7.30pm

Contact Louise via Facebook.

www.seiriolalliance.co.uk/newsletters/

Keep your eye on social media, notice boards and **The Puffin** for updates.

- **Llangoed Flower and Vegetable Show:** here's a final reminder! It's set for Saturday 5 July, Llangoed Village Hall. Don't miss it!

📧 Sioe Flodau Llangoed Flower Show
www.llangoedflowershow.com

✉ julie@plasbodfa.com

📧 Sioe Flodau Llangoed Flower Show
www.facebook.com/groups/sioeflodau



Ffion and Nesta did a sterling job of helping their mother and me insert Flower Show leaflets into **The Puffin** 51...

See our spread in **The Puffin** 51, pages 8-9, for more information.

- **Llangoed WI:** we meet on the first Wednesday of the month in Neuadd Bentref Llangoed Village Hall; meetings begin at 2.00pm.

We're a lively group of mixed ages, so, ladies, do feel welcome to join us.

Please contact our Secretary, Catherine Sproston, for more information.

☎ 07900 382200

See also page 24.



- **Camau Bach:** Llangoed Village Hall, every Friday during term-time, 9.30am-11.00am: for children and their carers.

☎ Rev Lesley Rendle 07817 873080

- **Llangoed Knitting Club:** we meet at the Pont y Brenin Hub on the third Monday of the month, 2.00pm-4.00pm. If you'd like to join us, please contact:

Elizabeth Roberts
Bodwyn
Llangoed
LL58 8NP

- **Seiriol Men's Shed:** we're a busy and active group, and meet on Tuesdays and Thursdays, 10.00am-1.00pm, in our workshop adjacent to Haulfre Residential Home, Llangoed.

puffinpages@gmail.com

From the direction of Beaumaris:

- Go through Llangoed, past Morrisons Daily on the right, and down the hill
- Go over the little bridge over the stream at the bottom and up the hill for about 200 yards Turn right at the *Gerddi Haulfre Gardens* sign into the Haulfre Residential Home car park and walk down the slope (to the right if you're facing Haulfre) towards the gardens
- Our premises are very close; our workshop is on the left, and our other premises are on the right.

PS: it's men only!...and please park thoughtfully; the car park is used by others as well.

Read more about our activities on page 31... particularly if you're a fan of Daleks...

For more information, or if you'd like to join us, please contact:

☎ Steve Jones 07368 219048

☎ Mike Thomas 07941 103386

✉ mensshedseiriol@gmail.com

📧 Seiriol Men's Shed
The Flat
Gerddi Haulfre
Llangoed
LL58 8RY



Penmon

- **A 2025 date for your diary:**
 - **NGS Open Gardens:** Sunday 31 August, 11.00am-4.00pm: the following gardens will be open:
 - Llwyn Onn, Penmon LL58 8SG
 - The Old School, Penmon LL58 8RU

Keep your eye on social media, notice boards and **The Puffin** for updates

Eglwysi Bro Seiriol Churches

- **VE Day 80th Anniversary Commemoration:** Thursday 8 May, 10.30am, Church of St Mary & St Nicholas, Beaumaris, followed with refreshments at the Town Hall.
The day will begin with a formal proclamation at the Cenotaph at 9.00am. The Church bells will be rung at 6.30pm.
- **Festival Choral Evensong:** Sunday 25 May, 5.00pm, Church of St Mary & St Nicholas, Beaumaris, with the Monteverdi Singers.
- **Concert:** Saturday 21 June, 7.30pm, Church of St Mary & St Nicholas,

Beaumaris, with the Monteverdi Singers.

- **Annual "Yachtsman's Service":** Sunday 27 July, 11.00am, Church of St Mary & St Nicholas, Beaumaris.

If you would like to receive weekly news bulletins for services and events or would like more information please e-mail me at huwbutler@churchinwales.org.uk.

You will find details also at:

📧 Ardal Weinidogaeth Bro Seiriol Ministry Area
www.broseiriol.net

📧 Eglwysi Bro Seiriol Churches
www.facebook.com/BroSeiriol/



Some useful services

Note

We do our best to ensure that dates, times and so on are accurate. Information can change, though, so be sure to check beforehand.

Common Ailments Service

The Common Ailments Service (CAS) is a scheme offered by local pharmacies that provides patients with free NHS advice and treatment for a range of minor illnesses.

Access to the CAS: you may gain access to the CAS through your local pharmacy. A pharmacist will be available to have a short consultation with you before advising you on how best to treat your illness.

Advice and treatment: the scheme aims to help people who have a minor illness by providing advice and treatment.

There are 27 conditions covered by the service. If your illness is not covered by the service, your pharmacist can still provide you with advice.

Anybody who is staying in Wales for at least 24 hours after visiting the pharmacist may use the service.

Eye conditions: if you are suffering with an eye condition, you should visit your local optometrist (optician) first. He/she can provide you with a free NHS eye examination.

You'll find more information and a list of opticians that offer a free eye examination at Eye Care Wales.

📧 Common Ailments Service (CAS) – Information for Members of the Public
www.wmic.wales.nhs.uk/common-ailments-service/

📧 Eye Care Wales
www.nhs.wales/sa/eye-care-wales/

Rowlands Pharmacy
17 Castle Street
Beaumaris
LL58 8AP

01248 810312

01248 810180



ROWLANDS
PHARMACY

Cashpoints

There are now no banks in the Seiriol area, but we know of two cashpoints, both in Beaumaris:

- **Jolly's**, 5 Bulkeley Terrace, Beaumaris LL58 8AU, outside, at what used to be the NatWest bank
- **Spar**, 11 Castle Street, Beaumaris LL58 8AB: inside, during opening hours

Please let us know if you are aware of any others so that we can list them here.

- **Post Offices**: note also that you can withdraw cash with your bank card at any Post Office counter (Spar, Beaumaris and Pentraeth, and Morrisons Daily, Llangoed, for example) free of charge.

Citizens Advice

Citizens Advice is an independent charity and part of the Citizens Advice network across England and Wales.

Citizens Advice provides free, confidential and impartial advice on matters including money, benefits, housing and employment.

It also offers confidential, free and safe reporting of hate crimes and hate incidents.

Llangefni

Canolfan Ebeneser
Bridge Street
Llangefni
Anglesey
LL77 7PN

Opening times:

Tuesday, 9.00am-4.00pm
Wednesday, 9.00am-4.00pm

Other offices

There are Citizens Advice offices in Amlwch and Holyhead as well.

0808 278 7932

angleseyca@gmail.com

www.citizensadvice.org.uk/local/ynys-mon/



Defibrillators

Here is a list of defibrillators in the Seiriol Ward area at the end of 2024. The red

numbers correspond with the numbers in the map in **The Puffin** 51, page 12.

Beaumaris

- **01** under the Arch, Wall Street
Beaumaris LL58 8AP
- **02** Bulkeley Hotel
Beaumaris LL58 8AW
- **03** Lifeboat Station, The Green
Beaumaris LL58 8BS
- **04** Beaumaris Town Council
Car park fronting The Green
Beaumaris LL58 8BY
- **05** Happy Valley Pavilion
Beaumaris LL58 8RA
- **06** Canolfan Hamdden Beaumaris
Leisure Centre
Beaumaris LL58 8AL
- **07** Fire Station
Beaumaris LL58 8YH
- **08** Church of St Mary & St Nicholas *
Church Street
Beaumaris LL58 8AA
- **09** Ysgol Gynradd Beaumaris
Primary School
Beaumaris LL58 8HL
- **10** Baron Hill Golf Club
Beaumaris LL58 8YW
- **11** ABC Service Station
Gallows Point
Beaumaris LL58 8YH

Llanfaes

- **12** Henllys Golf Club
Llanfaes LL58 8HU
- **13** Henllys HPB Holidays
Llanfaes LL58 8HU
- **14** Canolfan Gymunedol Llanfaes
Community Centre
Llanfaes LL58 8LG

Llangoed

- **15** Canolfan Gymunedol Pont y
Brenin Community Hub
Llangoed LL58 8LS
- **16** CPD Llangoed FC (on the
building)
Llangoed LL58 8LS
- **17** Ysgol Gynradd Llangoed Primary
School
Llangoed LL58 8LU
- **18** Neuadd Bentref Llangoed Village
Hall
Llangoed LL58 8NN
- **19** Coedwig Terrace telephone kiosk
Llangoed LL58 8SL

Penmon

- **20** The Pines
Penmon LL58 8RN
- **21** Gwylwyr y Glannau Trwyn
Penmon Point Coastguard
Penmon LL58 8RR

Glanrafon

- **22** Glanrafon telephone kiosk
Glanrafon LL58 8PB

Llanddona

- **23** Warden's House, Maes Gwyn
Community Hub
Llanddona LL58 8TP

- **24** Yr Hen Ysgol, Neuadd Bentref
Llanddona Village Hall
Llanddona LL58 8TS
- **25** Yr Owain Glyndŵr
Llanddona LL58 8UF
- **26** Caffi'r Traeth/Beach Kiosk
Llanddona LL58 8UW

Llansadwrn

- **27** Llansadwrn telephone kiosk
Llansadwrn LL59 5SH

Llandegfan

- **28** Ysgol Gynradd Llandegfan
Llandegfan LL59 5UW
- **29** Neuadd y Plwyf Llandegfan
Parish Hall
Llandegfan LL59 5UL
- **30** Llyn Jane Ltd
Llandegfan LL59 5SB

Menai Bridge

- **31** Gorsaf Dân Porthaethwy Menai
Bridge Fire Station
Menai Bridge LL59 5EW

* Restricted access times



Library

Beaumaris library

David Hughes Community Centre
Rating Row
Beaumaris
Anglesey
LL58 8AL

Opening times are:

Monday 2.30pm-6.00pm
Wednesday 10.00am-12.30pm
Friday 9.00am-1.00pm
☎ 01248 810659

✉ ddx1h@anglesey.gov.wales

Mobile library

The mobile library visits communities which are more than ¾ mile from one of Anglesey's libraries.

It carries a small but comprehensive selection of books and tapes, and also provides a gateway to other library services.

The mobile library visits the following communities on the third Friday of the month:

- **Llanddona**:
Neuadd Bentref Llanddona Village Hall
11.30am-12.30pm
Maes Gwyn
1.10pm-1.45pm
 - **Llandegfan**:
Siop Llandêg
9.30am-10.00am
 - **Llangoed**:
Neuadd Bentref Llangoed Village Hall
10.30am-11.30am
- www.seiriolalliance.co.uk/newsletters/

Note: the mobile library no longer now calls at the Pont y Brenin car park or Aberlleiniog car park.

- **Llansadwrn:**
Tan-y-Ffordd
2.00pm-2.30pm

☎ 01248 752093, 01248 752095

Telephone Llangeferni Library if you would like more information about its doorstep delivery service.

☎ 01248 752093

- **Mobile and Home Library Service**
www.anglesey.gov.wales/en/Residents/Libraries/Mobile-and-Home-Library-Service.aspx



Household waste recycling

Penhesgyn Household Waste recycling Centre

Menai Bridge LL59 5RY

Booking is not necessary: Anglesey residents do not need to book a slot to use this centre.

- Vehicles must be no longer than 5.0m and no higher than 2.1m, including any attachments.

Householders must produce proof of residency on the Isle of Anglesey, such as a current Council Tax bill, driving licence or recent (less than 3 months old) utility bill.

Opening times are:

Monday 10.00am-4.30pm
Tuesday 10.00am-4.30pm
Wednesday CLOSED
Thursday CLOSED
Friday 10.00am-4.30pm
Saturday 10.00am-4.30pm
Sunday 10.00am-4.30pm

- **Penhesgyn Household Waste Recycling Centre**
www.anglesey.gov.wales/en/Residents/Bins-and-recycling/Recycling-centres-and-recycling-banks/Penhesgyn-Household-Waste

☎ Waste Management
01248 752093

Gwalchmai Household Waste Recycling Centre

Gwalchmai LL65 4PW

Booking is necessary: Anglesey residents need to book a slot to use this centre because this recycling centre is very close to the A5 main road.

The booking system is needed to control the flow of traffic to the centre, for safety and the reduction of queues adjacent to a busy road.

- The same vehicle and residence criteria apply.

puffinpages@gmail.com

- **Gwalchmai Household Waste Recycling Centre**
www.anglesey.gov.wales/en/Residents/Bins-and-recycling/Recycling-centres-and-recycling-banks/Gwalchmai-Household-Waste-Recycling-Centre.aspx



Mobile banking

NatWest is alone among the main banks in providing a mobile banking service in our area.

A Mobile Branch visits Beaumaris and Menai Bridge every week:

- **Beaumaris:**
Castle Square
LL58 8DA
Wednesday 10.30am-11.15am
- **Menai Bridge:**
Wood Street car park
LL59 5QW
Wednesday 3.35pm-3.55pm

- A directory for your local banking services
www.natwest.com/banking-with-natwest/other-ways-to-bank-with-natwest-banking-me.html#mb



Mobile Post Office

The Post Office provides a mobile service across Anglesey.

It makes the following weekly local stops at Llanddona and Llandegfan:

- **Llanddona:**
Maes Gwyn
LL58 8TP
Thursday 9.45am-10.15am
- **Llandegfan:**
Bro Llewelyn
LL59 5UP
Tuesday 3.45pm-4.15pm
Maes Ffynnon
LL59 5PS
Tuesday 4.15pm-4.45pm

All the usual Post Office services are available.

Visit Maesgeirchen Mobile Post Office's Facebook page for up-to-date information about this service.

- **Maesgeirchen Mobile Post Office**
www.facebook.com/people/Maesgeirchen-Mobile-Post-Office/100057490246225/



• • • • •
Llinos Medi: fy chwe mis cyntaf fel AS 🍀
Llinos Medi AS

Mae'n anodd credu bod chwe mis wedi mynd heibio ers i mi gael fy ethol yn

Aelod Seneddol Ynys Môn. Mae amser wedi hedfan, ac mae hi wedi bod yn fraint lwyr cynrychioli ein hynys yn San Steffan. O siarad yn Nhŷ'r Cyffredin i gyfarfod â phobl mewn cymunedau ar draws Ynys Môn, mae pob dydd yn fy hatgoffa o pam fy mod wedi penderfynu rhoi fy enw ymlaen i gynrychioli ein hynys a'i trigolion arbennig.

Un o'r heriau rwyf wedi wynebu'n ddiweddar oedd cau Porthladd Caergybi yn dilyn difrod difrifol gan Storm Darragh. Gyda gwyntoedd 90mya a moroedd mawr, fe adawodd y storm rannau o'r ynys heb bŵer am ddyddiau. Roedd yn gyfnod anodd, ond unwaith eto, roedd yr ysbryd cymunedol yn anhygoel. Gweithiodd y Cyngor Sir a Scottish Power yn ddi-ddiwedd i sicrhau bod y ffyrdd yn cael eu hailagor yn gyflym ac yn ddiogel, a bod gan y rhai yr effeithiwyd arnynt fynediad at fwyd poeth, lloches a chymorth.

Yn sicr, mae rhai gwersi i'w dysgu, fel ein bod wedi parato'n well ar gyfer y storm nesaf, ac rwyf wedi galw ar Lywodraeth y DU i ddarparu cronfa caledi i gefnogi busnesau lleol y mae cau'r Porthladd wedi effeithio'n uniongyrchol arnynt. Mae effaith hyn ar dref Caergybi a'r ynys yn ehangach yn bell gyraeddol.

Ers cael fy ethol, rwyf wedi siarad dros Ynys Môn ar bob cyfle. Roedd fy nghwestiwn cyntaf i'r Prif Weinidog (PMQ) ar 7 Tachwedd yn gyfle anhygoel; sefyll mewn Tŷ Cyffredin llawn dop, yn cael ei wyllo gan ddegau o filoedd o bobl, gan sicrhau bod lleisiau'r ynys yn cael eu clywed ar y lefel uchaf o lywodraeth. Ers hynny, rwyf wedi siarad yn y Siambr ar ystod o faterion, o dalu teurged i Diwrnod Cofio'r Holocaust i graffu ar amseroedd aros GIG Cymru, o amaethyddiaeth i economi, mae'r chwe mis cyntaf wedi mynd yn rhyfeddol o sydyn.

Rwyf wedi ymgymryd â rolau allweddol sy'n fy ngalluogi i hyrwyddo buddiannau Ynys Môn, gan gynnwys dod yn Is-Gadeirydd yr APPG Ynni Morwrol a Chadeirydd APPG Lletygarwch, Bwyd a Diod Cymru.

Mae APPGs (Grwpiau Seneddol Hollbleidiol) yn dod ag ASau o wahanol bleidiau, arbenigwyr diwydiant a gweithredwyr ynghyd i ganolbwyntio ar faterion allweddol, ac mae'r rolau hyn yn rhoi llwyfan uniongyrchol i mi wthio am fuddsoddiad a chefnogaeth yn y sectorau hanfodol hyn.

Un o'r pleidleisiau mwyaf heriol i mi ei hwynebu hyd yn hyn oedd ar y Mesur Hawl i Farw. Roedd yn fater emosiynol a hynod bersonol, gyda dadleuon angerddol ar y ddwy ochr. Gwrandewais yn ofalus ar etholwyr, gweithwyr proffesiynol, ac ymgyrchwyr cyn penderfynu (pleidleisiais o blaid). Dyma'r math o waith sy'n graidd i'r swydd –

mae'n ymwneud â phobl, eu straeon, a'r effaith wirioneddol mae ein penderfyniadau yn eu cael arnynt.

Serch hynny, nid yw'r popeth wedi bod yn wleidyddiaeth ddifrifol! Un uchafbwynt annisgwyl oedd fideo o fy araith Ystâd y Goron yn cael ei wyllo 170,000 o weithiau ar Instagram. Mae'n dangos pa mor bwysig yw'r cyfryngau cymdeithasol i gyfleu ein neges, yn enwedig i'r cenedlaethau iau nad ydynt efallai'n tiwnio i mewn i sylw gwleidyddol traddodiadol.

Y tu hwnt i San Steffan, rwyf wedi bod o gwmpas yr ynys. Yn ddiweddar, ymwelais â Wylfa i weld y broses o ddatgomiynu; siaradais â gweithwyr a phrentisiaid RAF Fali; cynnal digwyddiad cymunedol yn Llannerch-y-medd i wthio yn ôl yn erbyn datblygu ffermydd solar enfawr ar yr ynys; a chael y fraint o gwrdd â llawer o dalent ifanc Ynys Môn.

Ac, wrth gwrs, mae mynd a dod o Lundain bob wythnos wedi bod yn antur ynddi'i hun! Dwi'n meddwl mod i wedi dod yn dipyn o arbenigwr ar fywyd trên – gan adael ar doriad y wawr a dychwelyd adref yn hwyr yn y nos – mae'n deg i ddweud nad oes nunlle fel adra.

Rwy'n ymwybodol nad yw popeth yn berffaith, mae nifer o'r penderfyniadau diweddar wedi taro ein cymunedau yma ar yr ynys. Ond gallaf ei addo yw y byddaf bob amser yn gwneud fy ngorau glas i ymladd dros ein hynys, i wrando, ac i weithio mor galed ag y gallaf dros y bobl sy'n ymddiried ynof.

Rwy'n edrych ymlaen at bopeth y gallwn ei gyflawni gyda'n gilydd yn y blynyddoedd i ddod.



Llinos Medi: my first six months as an MP

Llinos Medi MP

It's hard to believe that six months (at the time of submitting this article) have already passed since I was elected as your Member of Parliament for Ynys Môn. Time has flown by, and it's been an absolute privilege to represent our island in Westminster. From debates in the House of Commons to meeting people in communities across Ynys Môn, every day has been a reminder of why I wanted to take on this role in the first place.

One of the most difficult challenges we've faced recently was the partial closure of the Port of Holyhead following severe damage from Storm Darragh. With 90mph winds and high seas, the storm left parts of the island without power for days and worsened existing damage to the Port. It was a difficult time, but once again, everyone showed

their incredible community spirit. The council and Scottish Power worked tirelessly to ensure the roads were reopened quickly and safely, and that those affected had access to hot food, shelter, and support.

There were certainly some lessons to be learnt so that we are better prepared for the next storm, and I have called on the UK Government to provide a hardship fund to support local businesses directly impacted by the Port's closure.

Since being elected, I have spoken up for Ynys Môn at every opportunity. My first Prime Minister's Question on 7 November was an incredible opportunity; standing in a packed House of Commons, watched by tens of thousands of people, ensuring that our voices were heard at the very highest level of government. Since then, I have spoken in the Chamber on a range of matters; from remembering Holocaust Memorial Day to scrutinising NHS Wales waiting times, from agriculture to economics, it's been a whirlwind.

I've also taken on key roles that allow me to champion Ynys Môn's interests, including becoming Vice-Chair of the Marine Energy APPG and Chairwoman for the Welsh Hospitality, Food & Drink APPG.

APPGs (All-Party Parliamentary Groups) bring together MPs from different parties, campaigners, industry experts and professionals to focus on key issues, and these roles give me a direct platform to push for investment and support in these vital sectors.

One of the most challenging votes I've faced so far was on the Assisted Dying Bill. It was an emotional and deeply personal issue, with passionate arguments on both sides. I listened carefully to constituents, professionals, and campaigners before making my decision (voted **for**). These are the moments where being an MP isn't just about policies – it's about people, their stories, and the real impact our decisions have on their lives.

It's not all been serious politics, though! One unexpected highlight was a video of my Crown Estate speech being watched 170,000 times (and counting) on Instagram. It just goes to show how important social media is for getting a message across, especially to younger generations who might not be tuning in to traditional political coverage.

Beyond Westminster, I've been out and about across the island. I recently visited Wylfa to see the decommissioning process, spoke to workers and apprentices at RAF Valley, held a community event in Llannerch-y-medd to push back against large-scale solar farms being developed on the island, and had the privilege to meet a lot of

young talent coming from Ynys Môn.

And, of course, getting to and from London each week has been an adventure in itself! I think I've become quite an expert in train life – leaving at the crack of dawn and returning home late at night – but there's nothing better than seeing the beautiful coastline of Ynys Môn again after a long week.

I won't pretend that everything is perfect or that every problem has an easy solution. But what I can promise is that I will always do my best to fight for our island, to listen, and to work as hard as I can for the people who've put their trust in me.

I look forward to all we can achieve together in the years to come.

• • • • •

Catherine Wendy Rowlands
Richard Adams

It seems that pretty much everyone at this end of Ynys Môn knew Cathy, and her work with Guides and Rangers as well as her profession as a Community Occupational Therapist (OT) ensured that a lot of people from much further afield knew her as well. Cathy was brought up in the beautiful setting of White Beach, near Penmon, where her grandparents farmed and, later, her parents ran a smallholding.



Cathy and George
(Cathy Rowlands)

She went to Salford to train as an OT, and bought a house in Penmon village when her parents moved to Haulfre Cottages in Llangoed. After a few years working in local hospitals, she found her niche as a Community OT for the south of Ynys Môn, and there she worked until retirement at Christmas 2022.

Cathy's Christian faith was foundational to the way that she lived. It began in Capel y Drindod, Beaumaris, with her parents, was nurtured in a Pentecostal church in Bangor for a few years and then matured in her many years in the Church of St Mary and St Nicholas, Beaumaris. She assisted there in a number of ways, latterly with a few years

Across

- 1 Stylish (4)
- 3 Urges (8)
- 9 Reduction in pressure (7)
- 10 Lively (5)
- 11 Say yes (5)
- 12 Request (6)
- 14 Tee-shirt decoration (3-3)
- 16 Arrange (6)
- 19 Enjoyable exercise? (3,3)
- 21 Middle-eastern person (5)
- 24 Jetty (5)
- 25 Collapse (7)
- 26 Red vegetable (8)
- 27 One nautical mile per hour (4)

as Church Warden. She became a keen bell-ringer, and very much missed bell-ringing during the 18 months or so that she was ill.

Cathy's commitment to Guides and Rangers will probably be her most enduring legacy. She enjoyed Guides as a girl and grew into leadership following her mother Nan's example, and also became instructor for the Duke of Edinburgh's Award, supporting a large number of young people in gaining different levels of that Award.



Cathy at Nan's Place
(Sheila Jones)

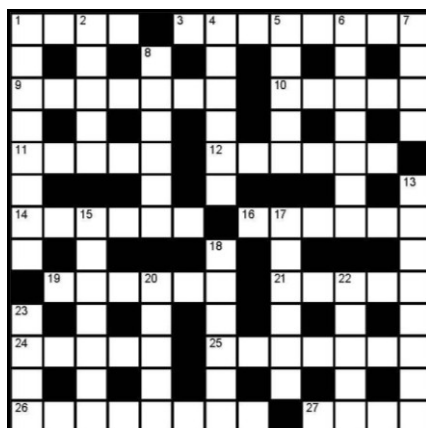
For most people, Cathy's work with girls and young women would have been more than enough, but she had many other interests and involvements. She took on her mother's haberdashery shop, Nan's Place, when Nan became ill and subsequently died in 2011. Reducing her NHS hours somewhat, Cathy opened the shop part-time and provided a valuable service making and altering as well as selling fabric, wool, etc. Cathy loved crafts and could turn her hand to many different kinds of work, but her favourite seemed to be knitting. As well as sweaters, etc., she knitted animals and people of all shapes and sizes, which were seen in her window displays, particularly at Christmas.

Her many achievements were recognised in 2019 when she was elected as an Honorary Burgess of Beaumaris (the award ceremony was delayed by COVID till 2022), so far, the only woman to be accorded that honour.

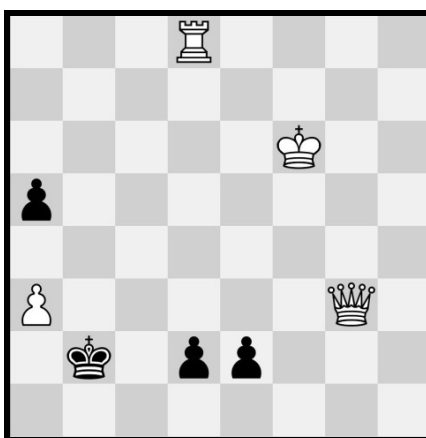
Cathy loved animals, above all, cats! She was rarely without at least one in

puffinpages@gmail.com

The Governor's Quick Crossword no 20



Fianchetto 66's Chess no 11



The solutions are on page 33.

the house, and when she died there were four; all have now made a smooth transition to the care of a neighbour. She had tortoises: Horace, the last one, is about 40 years old and has fortunately found a new home.

Her holidays were spent either on Guide and Ranger events, or (her absolute favourite) on canals with the Trefoil Guild afloat, and there were very few parts of the UK canal network that she didn't know.

Cathy also enjoyed geocaching and was responsible for managing a number of local sites.

Cathy retired at the end of 2022 and had plans, including more canal trips and a camper van. Sadly, she became ill just a few months into 2023 and, although she managed a couple more canal holidays and a trip to Lindisfarne, the rest of her bucket list remained unfulfilled.

One of her "ladies", as she called them, wrote this to her:

Thank you for all you have done for me all these years. You've made me a strong and determined person and given me loads of opportunities – forever thankful.

Many tributes in the same vein were

Down

- 1 A and E (8)
- 2 Runic (anagram) (5)
- 4 By hand (6)
- 5 Unfasten (5)
- 6 Opera singer (7)
- 7 Bean (4)
- 8 Opportune (6)
- 13 Loud (8)
- 15 Ape (7)
- 17 Not smart (6)
- 18 Purple-blue? (6)
- 20 Make reference to (5)
- 22 Tree seeds (5)
- 23 Wash down (4)

posted on the Guides' and Rangers' Facebook pages. Her funeral reflected the affection and respect that she was due through the tributes given and the numbers present: Beaumaris church was packed out.

Cathy is buried near her parents at Capel Tŷ Rhys in Llangoed.

World Chess Championship 2024: the youngest ever undisputed Champion

Fianchetto 66

Halfway through December last year, as many of us were contemplating Christmas, 18-year-old Gukesh Dommaraju was contemplating a 64-square board at Resorts World Sentosa in Singapore. This may not seem significant at first, but after 14 games against his Chinese opponent Ding Liren, Gukesh became the youngest ever undisputed World Chess Champion.



Gukesh Dommaraju
(Maria Emelianova/www.chess.com/players/gukesh-dommaraju)

The match was remarkable before it had even started, being the first time both opponents hailed from Asia; this in itself led to an incredible focus of attention from the world at large, most notably from Gukesh's home country, India.

I watched all 14 games, along with some of the press conferences that followed, and was struck by how peaceful and polite both players were. Softly spoken

(continued on page 19)

40 fantastic years!

Gŵyl Beaumaris Festival celebrates its 40th anniversary this year with a fantastic week of West End shows and opera, hot jazz, choral and orchestral extravaganzas, art, poetry and more.

There's a birthday theme running throughout; see how many Composers under the age of 40 you can spot in the programme!

West End Shows

Beaumaris really does have its own West End:

- Come and hear Welsh stars Mared Williams, Glain Rhys and Steffan Rhys Hughes sing hit songs from Broadway and West End musicals, including *Les Misérables*, *Phantom of the Opera* and rock-opera *Nia Ben Aur*
Thursday 22 May, 7.30pm
- The London Welsh Male Voice Choir are back to sing *Men of Harlech*, *Myfanwy* and works by Elaine Hagenberg, Karl Jenkins and Edward-Rhys Harry. The choir is joined by top Welsh soprano, Eiry Price
Saturday 24 May, 7.30pm
- Following last year's triumph with Handel's *Orlando*, Liberata Collective return with a brand-new production of Mozart's opera *La Clemenza di Tito*, a compelling tale of political strife in Ancient Rome
Sunday 25 May, 7.30pm

Hot Jazz at the Bulkeley

- Enjoy violin wizard Ben Holder and his Trio injecting pizzazz into celebrated Hot Club classics by Django Reinhardt and Stéphane Grappelli at the Bulkeley Hotel Ballroom... Beaumaris's very own Ronnie Scott's!
Wednesday 21 May, 7.30pm

Art Exhibition

- Come and meet the legendary sculptor and jewellery-maker Andrew Logan at the Festival's Art Exhibition Opening and Reception
Thursday 22 May, 12.00 noon
Andrew's work will be exhibited in Canolfan Hamdden Beaumaris during the week, so why not pop in?

Next Generation 2025

The Festival shines several spotlights on the next generation of young talented musicians, with 3 Young Artists Recitals:

- Rhossili Duo: the Welsh/Australian flute and harp duo performing *Piazzolla* and a new work by Welsh composer Stephen Goss, *First Milonga, Last Tango*
Friday 23 May, 11.00am

- Exciting young pianist Tomos Boyles returns with a programme of Chopin, Mussorgsky and more
Saturday 24 May, 10.30am
- Tomos joins oboist Ewan Miller, a former BBC Young Musician, to perform Mozart, Colderidge-Taylor and Boulanger
Saturday 24 May, 3.00pm

Young musicians from the area

The Festival celebrates our very best young musicians with concerts by:

- Seindorf Beaumaris Band
Friday 23 May, 7.30pm
- Students from Canolfan Gerdd William Mathias
Monday 26 May, 11.00am



Talks, recitals & poetry

- This year marks the 40th anniversary of the death of the renowned Beaumaris-based singer and composer Philip Hattey. Rosamund Hattey joins Anthony Hose to talk about her father and his career in music: Festival Talk 1, 'My Father, Philip Hattey'
Thursday 22 May, 10.30am
- Baritone Jeremy Huw Williams sings Hattey's *Seven Poems of Robert Graves* and Butterworth's *A Shropshire Lad*, accompanied by pianist Ellis Thomas: Vocal Recital
Tuesday 27 May, 11.00am
- Hanan Issa, the National Poet of Wales, visits Beaumaris for the first time to discuss how poetic words can build bridges between people and places: Festival Talk 2
Friday 23 May, 3.00pm

Harp & orchestral extravaganzas

- Catch up with the former Royal Harpist Alis Huws when she presents a concert of Harp Masterworks with players from the Welsh Chamber Orchestra
Monday 26 May, 7.30pm

- Don't miss Alis, Erin Rossington and Jeremy Huw Williams as they join the Welsh Chamber Orchestra for an Orchestral Extravaganza on the last night, performing Gershwin, Mendelssohn, Mozart and a première by Cuban-American composer, Manuel de Murga
Tuesday 27 May, 7.30pm

The Festival line-up

Wednesday 21 May

- Jazz at the Bulkeley: the Ben Holder Trio.

Thursday 22 May

- Festival Talk 1: 'My Father Philip Hattey'
- Opening of the Art Exhibition: Andrew Logan
- Mewn Cymeriad: Thomas Telford
- From Broadway to the West End

Friday 23 May

- Young Artist Recital 1: Rhossili Duo
- Festival Talk 2: Hanan Issa
- Seindorf Beaumaris Band

Saturday 24 May

- Young Artist Recital 2: Tomos Boyles
- Young Artist Recital 3: Ewan Miller & Tomos Boyles
- London Welsh Male Voice Choir

Sunday 25 May

- Choral Evensong
- Pre-Opera Talk
- Festival Opera

Monday 26 May

- Young Musicians Showcase
- Harp Masterworks with Alis Huws

Tuesday 27 May

- Vocal Recital
- Pre-Concert Talk
- Festival Orchestral Finale

Booking

In person at

Canolfan Hamdden Beaumaris
Leisure Centre
Rating Row
Beaumaris
Anglesey
LL58 8AL
Monday-Saturday
11.00am-3.30pm

By telephone on:

01248 811200
Monday-Saturday
11.00am-3.30pm

On-line at:

www.beaumarisfestival.org

(from page 17)

and deferential toward each other, Gukesh and Ding alike described themselves as being "at peace" before the match. Refreshingly free of any posturing or boisterous banter, the conferences were a delight to behold with no small measure of journalistic effort to extract some newsworthy quotes. It brought a smile to my face when both players were asked how they managed to put the personal pressures of life aside when engaged in each game and Gukesh replied "I'm only 18, my parents and my team look after me and my life revolves around chess, so I don't have any personal pressures"!

In fairness, both Gukesh and Ding played superbly, the match coming to an end only when Ding allowed his bishop to be trapped, forcing a king and pawn endgame that was bound to finish in his opponent's favour.

There was also a third unique element to this historic match, the sponsorship. Significantly, Google was the main sponsor, and on the opening day of the match the Google Doodle (the image that appears above the search bar), was suitably chess-inspired.

Our puzzle on the previous page is taken from a game that Gukesh played in 2017, when he was only 11 years old and was competing in the 1st Sharjah Masters Tournament in the United Arab Emirates against the Kazakhstani player Zhansaya Abdumalik.

It is Gukesh (as white) to play and mate in two moves. Can you spot them?



📄 Gukesh Dommaraju
https://en.wikipedia.org/wiki/Gukesh_Dommaraju

📄 The Top Chess Players in the World
www.chess.com/players/gukesh-dommaraju

📄 What is today's Google Doodle and why is it celebrating the World Chess Championship?
www.standard.co.uk/news/uk/what-google-doodle-why-celebrating-world-chess-championship-b1196032.html

📄 Celebrating Chess
<https://doodles.google/doodle/celebrating-chess/>

May's front cover

Jane Bunce

The Puffin 52 contains a wealth of information about the National Open Gardens Scheme, including details of puffinpages@gmail.com

the group opening in Llanddona on Saturday 12 July. Go to pages 29-31 to read more about it.

♦ ♦ ♦

Regular readers will remember my painting that was featured on the front cover of **The Puffin** 48, May 2024, as part of its coverage of National Open Gardens Scheme Llanddona Grand Opening on 13 July. At the time **The Puffin's** Editorial Team asked if I'd like to have another nature/garden-themed front cover feature as an 'opener' this year should Llanddona have another group opening. I said 'yes', of course! I do hope that you like it.



The front cover of **The Puffin** 48

I inherited my love of drawing and painting from my father. He was a landscape painter and art teacher, and was a member of the Manchester Academy of Artists. With his guidance I learnt the importance of observation and practice (which, hopefully, eventually makes perfect). He believed also that it is essential to paint the subjects that really interest you. My parents loved nature; our garden had a glorious display of flowers thanks to my mother's green fingers, and a pond for the wildlife, and my interest in nature grew from those early years.

I went to Altrincham Grammar School and studied art at 'A' level as one of my subjects. While I was there I attended a careers evening and listened to a talk on textile design; it was a revelation to discover that it was possible to earn a living from painting patterns. What joy!

After contacting the Calico Printers Association in Manchester, I was asked to attend an interview, and was offered a position working in their commercial art studio. Here I learnt my trade, beginning with making the coffee. It was hard work, but immensely rewarding. The job wasn't only about being creative but also about having a technical knowledge of

the industry. From there, as my experience grew, I was employed by a design company which had a branch in **Düsseldorf** as well as in Manchester, so I produced work for European and British manufacturers.

Eventually I became self-employed, taking on commission work and creating new collections which included wallpaper designs as well as textiles. These were sold in America, Europe and the UK through a design agency which did all the hard work of travelling and selling, enabling me to stay at home and paint.

In the late 1990s I moved to Penmon with my family, and eventually I retired from designing and began to paint for my own pleasure...no more deadlines or commissions!



My studio: a small selection of my work, and some of my materials
(Jane Bunce)



Here on Anglesey I find inspiration all around me; whenever I go for a walk I fill my pockets with bits of plants, twigs, rocks or shells, anything that I find interesting, in fact. I work mostly in watercolours, and also in gouache, which is a water-based medium. I rarely use photographs for reference; I like to have samples of the plants and objects that I paint on my desk so that I can study them carefully.

Birds are much trickier to paint, but I spend a lot of time observing them, and I try to capture their appearance accurately. I hope that my pictures express my love of nature, a love deepened by living on Anglesey with its breathtaking beauty and diversity of wildlife. I believe that a connection with nature is vital for our wellbeing, and that it is essential that we value and protect the natural environment.

If I'm at home visitors are welcome to see my work and have a chat. Some of my work is being featured in an exhibition at Oriol Môn, just outside Llangefni, until 22 June. You'll find it on the 'slope' near the shop.

☎ 01248 490395, 07947 148031

✉ janebunce@mail.com

📍 Dinmor
Penmon
Anglesey
LL58 8SN

📍 Anglesey Arts Forum: Jane Bunce
<https://angleseyartsforum.org/author/janebunce/>

Nature Notes: Bumblebees,

Part 1

Roz Hattey

It's just after the spring equinox and I'm walking up the lane on a cloudy but very mild morning. A third day of warmth after quite a prolonged spell of brilliant days but with very chill air, easterly breezes and crisp, clear nights with lingering frosts.

It's great for stargazing and trying to spot the 'parade' of five aligned planets (only three visible with the naked eye). In this area we were unlucky when cloud hid the lunar eclipse and the recent 'blood moon'.

Today spring renewal is getting underway again: celandines display their fully open golden flowers, chaffinches, great tits, blackbirds and wrens proclaim their breeding territories and



Buff-tailed Bumblebee queen (*Bombus terrestris*) (Holger Casselmann: https://en.wikipedia.org/wiki/Bombus_terrestris#/media/File:Bombus_terrestris_queen_face_HC1.jpg)

woodpeckers are drumming at each end of the wood. Frogspawn has hatched into tiny tadpoles and marsh marigolds are opening their large, glossy yellow flowers by the pond. At intervals along the roadside verge, at the bases of hedges and tall clumps of alexanders, occasional bumblebees are buzzing.

Earlier in March, during a brief mild spell, a few large queen bumblebees were out and about, searching for food and finding a small supply in the form of nectar in open crocus flowers. Cold weather soon returned, though, and may

have killed some of these early emerging bees. Now more are coming out of hibernation to feed on pollen and nectar producing flowers and to continue with preparing to nest underground.

I've just been listening to Dr George McGavin, the wonderfully enthusiastic entomologist we know from many TV programmes. He was in conversation with Martha Kearney about his life-long fascination with the natural world. They were walking through Wytham Woods near Oxford earlier in the year when snowdrops were still in flower. A drowsy bumblebee attracted George's attention and he stooped down to help the bee stay in position in a snowdrop flower, so she could take in enough food. She was clearly struggling in the chill morning air, so George also 'huffed' on her gently for a minute or two to warm her up, then placed her in a sunlit glade to help her warm up enough for flight and a further search for food. "There you are, darling," he said, "you might make it now."

Bumblebees and other bees are, as most people know by now, struggling to survive in the modern world, for many reasons, particularly the widespread losses of suitable habitats and flowering plants, the continuing use of pesticides, other forms of pollution and the effects of climate change. In Part 2 of this article (**The Puffin** 53, August 2025) I will look at the many positive conservation measures which are being taken to protect bumblebees.



White-tailed Bumblebee on greater knapweed (*Centaurea scabiosa*).

(Ivar Leidus: https://en.wikipedia.org/wiki/Bombus_lucorum#/media/File:Bombus_lucorum_-_Centaurea_scabiosa_-_Keila.JPG)

Bumblebees are fascinating creatures. Trying to identify the different species and spending time studying their behaviour would be a time-consuming but very rewarding hobby. Fortunately there is a beautifully illustrated book out now which provides us with excellent photographs and a wealth of written detail to be dipped into (see Nick Owens's *The Bumblebee Book: A guide to Britain & Ireland's bumblebees*). Here I have selected some facts and figures which I hope will encourage a wider

interest in what is probably one of our favourite insects.

Bumblebees are one group, or genus, in the wider bee family *Apidae*. Their genus has the splendid name of *Bombus*. Wasps and ants are in the same sub-order as bees, *Aculeata*, which itself is in the higher order of *Hymenoptera*. These are all in the enormous and most diverse 'class' of animals, the insects. In Great Britain there are 25 living species of bumblebees and 22 in Ireland (two species are now extinct). Bumblebees are social insects which live in a colony with one queen and around 400 sterile females known as 'workers'.

Bumblebees live mostly in temperate regions of the world extending all round the northern hemisphere and right down to the tip of South America. There are 250 species worldwide, so 10% of the world's species occur in Britain. Like almost all other bees, bumblebees feed almost entirely on pollen and sugars collected from plants.

Bumblebees are covered in hairs known as setae. These help to retain heat which allows the bees to remain active in low temperatures. The hairs are also used to collect pollen. Among British and Irish species there are four common colour schemes in a range of combinations and markings: black and yellow stripes with a white tail, black and yellow stripes with a red tail, black with a red tail and ginger-brown.



Garden Bumblebee Queen on flower of Viper's Bugloss (*Echium vulgare*)

(Ivar Leidus: https://en.wikipedia.org/wiki/Bombus_hortorum#/media/File:Bombus_hortorum_queen_-_Echium_vulgare_-_Keila.jpg)

Female bumblebees have a sting but males do not. Unlike some bees the female's sting is retractable so it does not die as a result of using its sting. In larger species like the Buff-tailed bumblebee the queens are 23-25 mm long, impressive creatures! Workers are smaller and very variable, depending on their food-supply when at the larval stage. Males are a similar size to the average worker but are narrower in shape. Adult insects do not grow, so a small bumblebee is not a young bumblebee, just smaller than the queen

or a small species.

Queen bees come out of hibernation when temperatures begin to rise, usually from March onwards, but sometimes as early as January or February.

Emergence time also depends on the species. They need to feed up on nectar and pollen before searching for nesting sites underground, sometimes using an empty mouse or vole burrow. The search can take some time and nights are spent hiding in grass or leaf-litter.

Once settled at a nest-site the queen bee builds a honey-pot from wax and collects nectar from flowers to put in it. She also now begins to fill her 'pollen baskets', situated on her hind-legs, when visiting flowers. She places a pile of pollen and nectar in the nest and covers it with a waxy platform which has a low, circular wall. Here she lays several long, white eggs and covers them with a wax roof. The queen gradually makes more and more of these wax-covered egg-chambers. At night and if the weather is cool she feeds herself from the honey-pot.

The eggs hatch after about four days and small larvae emerge. These feed on the food-store and on additional pollen brought by the queen. The larvae become pupae which spin cocoons. New bumblebees eventually appear from the cocoons three or four weeks after egg-laying.

These new bees are all sterile females, the workers, which soon leave the nest to collect nectar and pollen for the colony. The food is placed in wax pots. The queen and the new workers all feed the remaining larvae with a mixture of nectar and pollen, inserting it through holes in the wax.

Soon the queen stays in the nest continuing to lay more eggs. By mid-summer there can be up to 400 workers and then new queens and male bees begin to emerge. The males feed from the nest's food stores before leaving to search for unrelated virgin queens in or around other nests.

At summer's end, the workers begin to die off and the old queen is literally exhausted. Some workers now lay eggs but as these have not been fertilised only male bees will develop. As temperatures drop the old queen, the workers and the males will all die. Newly mated queens burrow into the ground and become dormant over-winter.

Sometimes a large number of queens hibernate close together. Nesting behaviour varies between bumblebee species, for instance the Garden Bumblebee often nests above ground amongst ivy or in a bird nest-box.

Of the 25 species of bumblebee in Britain, around 19 species occur on Anglesey. The most widespread and the

ones we are most likely to see are:

- Buff-tailed Bumblebee (*Bombus terrestris*)
- White-tailed Bumblebee complex, comprising three very similar species (*Bombus lucorum agg*)
- Garden Bumblebee (*Bombus hortorum*)
- Early Bumblebee (*Bombus pratorum*)
- Red-tailed Bumblebee (*Bombus lapidaries*)
- Common Carder Bee (*Bombus pascuorum*)

There are six species of 'cuckoo bumblebees' in Britain and Ireland. All are widespread, but some are quite scarce. They live up to their name, laying their eggs in the nest of another species of bumblebee. Observations have shown that sometimes the cuckoo stays quietly in the nest for some days before laying eggs. She needs there to be enough resident workers emerging to rear her own young. When she does lay eggs the resident or host queen realises there's an intruder and tries to evict her. The defending queen is often killed at least partly due to the cuckoo's sting being much stronger with a larger venom sac. When the queen has gone, the female cuckoo takes over the food supplies and lays more eggs. The resident workers just carry on collecting food and feeding the cuckoo larvae, which develop into females or males.

There are no cuckoo queens or workers.

Cuckoo bees are described by Nick Owens as "mysterious, fascinating and vulnerable and part of our precious biodiversity". Their lives are actually quite precarious as, in the same way as with other parasites, they depend in the long-run on the success of their host species.

The way bumblebees behave as they move around visiting different flowers, that is their foraging behaviour, is very complex and there is so much more to find out. We do know that bees take account of the shape, colour and scent of flowers.

Bumblebees are sturdy, have long tongues, a wide feeding range and tolerance of low temperatures and some flowers have evolved to become particularly dependent on these characteristics for their pollination. These, known as 'bumblebee flowers', often open in the early morning and stay open all day even in cool and wet conditions so bumblebees can pollinate them.

Bumblebees are attracted to large, bell-shaped flowers or pendulous flowers like foxgloves and bluebells as they can find their way into them. Some large flowers like the lupin rely on the bumblebee's weight to expose the reproductive parts of the flower, the stigma and anthers.

Large irises need the weight and strength of bumblebees to push their way into the flowers.

Flowers growing on boggy ground or in open water, such as yellow iris or cross-leaved heath (*Erica tetralix*) are often dependent on bumblebees because they are strong enough to fly across extensive wetlands from their nest-sites on dry ground, even if the weather is cool.

It's clear that bumblebees are a vital and intriguing part of the natural world and of our gardens too. When you are buying new plants do remember to look for the 'bee-friendly' labels and try not to use any pesticides.

Look out and listen for bumblebees in particular: they are well worth watching as they go about their valuable business.

📖 Learn about the UK's bumblebees
www.bumblebeeconservation.org/learn-about-bumblebees/

📖 Bumblebee
<http://www.britannica.com/animal/bumblebee>

📖 Bumblebee
<https://en.wikipedia.org/wiki/Bumblebee>

📖 *Bombus terrestris*
https://en.wikipedia.org/wiki/Bombus_terrestris

📖 *Bombus lucorum*
https://en.wikipedia.org/wiki/Bombus_lucorum

📖 *Bombus hortorum*
https://en.wikipedia.org/wiki/Bombus_hortorum

Main reference

📖 Nick Owens: The Bumblebee Book: A guide to Britain & Ireland's bumblebees (Pisces Publications, 2020) ISBN: 978-1-8743-5798-8
www.nhbs.com/search?q=nick+owens&qview=219835

Hedges, the countryside and wildlife

Andrew Perrott

The Puffin received a disturbing e-mail last month from a named sender just as the quarterly text-setting process was starting.

We live in a very special and beautiful part of the world... coast, woods, fields common land, all on our doorstep. Most of us try to live in harmony with the environment, and generally make a pretty good hash of doing so.

Hedges are an inescapable feature of the landscape, not just in fields and along lanes but in gardens as well.

(continued on page 24)



Canolfan
Hamdden
Beaumaris

MWY NA CHANOLFAN HAMDDEN YN UNIG



NEWYDDION

Yn ddiweddarach yn y flwyddyn byddwn yn lansio ein cyllid torfol i godi arian i gymryd lle ein Portakabin fel y gall ein plant symysu o'r gwefan ac fel y gall ein dosbarthiadau lles, fel ioga a philates symud allan o'r neuadd chwaraeon o ofod cynhesach.

GAMPFA NEWYDD!

Mae gennym arbenigwyr ac aelodaeth gampfa hyblyg i'ch helpu i ddechrau.

Yn agored i rain ad ydynt yn aelodau.

NEWYDDION GWYCH! GREAT NEWS!
MAE O YMA! IT'S HERE!
CAMPFA NEWYDD NEW GYM
CAMPFA SYDD NEWYDD EI HADNEWYDDU BELLACH AR WAITH
NEWLY REFURBISHED GYM IS NOW UP AND RUNNING
OFFER NEWYDD BRAND NEW EQUIPMENT
DOD YN FUAN CAMPFA WEDD! UWCHRADDIO CARDIO A CHRYFDER
A NEW RANGE OF CARDIO AND RESISTANCE MACHINES
BUDDSODDIAD O £75,000 INVESTMENT

GWEITHGAREDDAU CYMUNEDOL

- **Dydd Llun** 10.00yb-12.30yp
Clwb Bridge
- **Dydd Mawrth** 10.00yb-12.00 h/dydd
Bore Coffi (llyfrgell)
- **Dydd Mawrth** 1.30yp-4.30yp
Grŵp Celf
- **Dydd Mercher** 10.00yb-4.00yp
Dosbarth Clytwaith
- **Dydd Mercher** 3.00yp-5.00yp
Dosbarth Technoleg Gwybodaeth i Ddechreuwr
- **Dydd Iau** 10.00yb-11.30yb
Grŵp Babanod
- **Dydd Iau** 10.00yb-12.00 h/dydd
Cyfrifiaduron i Ddechreuwr
- **Dydd Gwener** 11.30yb-12.30yp
Paned a Sgwrs
- **Dydd Gwener** 1.30yp-3.30yp
Crefftau Croeso Cynnes

BETH SY'N DWAD I FYNFY?

Mae gennym rai digwyddiadau cyffroes i dwad y fyny dros y misoedd nesaf...

Eisteddfod Môn

Ar 16 Mai-17 Mai bydd Eisteddfod Môn yn dychwelyd il ardal Seiriol yn Ynys Môn am y tro cyntaf ers 1973.
Gweler tudalen 8.



Gŵyl Beaumaris Festival

Mae Gŵyl Beaumaris fawreddog yn dychwelyd o 21 Mai i 27 Mai, gyda rhaglen drawiadol o ddigwyddiadau cerddorol. Gweler tudalennau 8 a 18.



Llygaid I lawr!

Ydych chi wedi bod l un o'n nosweithiau Bingo newydd eto? Bydd hwn yn ddigwyddiad misol rheolaidd felly.



Northern Soul

Rydym yn bwriadu cynnal noson 'Northern Soul'. Mae'r sîn gerddoriaeth fywiog hon yn boblogaidd iawn, ac mae'n siwr o fod yn noson wych. Cadwch lygad am fanylion!



CANOLFAN LLES SEIRIOL

gan gynnwys

- Dosbarthiadau ymarfer corff •
 - Tai chi •
 - Aciwbigo •
 - Ffisiotherapi •
- Therapiau holistig •
- Ymwybyddiaeth ofalgar •
 - Osteopathi •
 - Tyllino chwaraeon •
 - Reiki •



Cysylltu â ni os hoffech mwy o wybodaeth

Ein manylion yn cael eu rhoi isod

LLE CROESO CYNNES

Te, coffi a chacennau!
Ymhlith y gweithgareddau mae peintio cerrig mân, ffeltio, potiau atgofion a llawer mwy

Bob dydd Gwener, 1.00yp-3.30yp: £5

Rhyddhewch eich ochr grefftus!
Rhaid archebu lle

Angen chwaraewyr Scrabble
1.00yp-3.30yp

GWEITHGAREDDAU PLANT

- **Dydd Llun**
4.00yp-4.45yp Pêl-droed
 - **Dydd Mawrth**
5.00yp-6.00yp Pêl-picl i blant
4.00yp-4.45yp Gymnasteg
 - **Dydd Mercher**
4.00yp-4.45yp Gymnasteg
 - **Dydd Iau**
4.00yp-5.00yp Trampolinio
5.30yp-6.30yp Sglefrfyrdio
6.30yp-7.30yp Sglefrfyrdio
 - **Dydd Gwener**
4.00yp-5.30yp Pêl-picl pobl ifanc
 - **Dydd Sadwrn**
10.00yb-11.15yb Disco Roller
- Gweithgareddau i blant yn ystod gwyliau ysgol

SESIYNAU NEWYDD A DECHREUWYR

- **Dydd Llun**
5.30yp-6.30yp 'Bodysculpt'
1.00yp-2.00yp 'Bootcamp'
6.45yp-8.00yp logalates
- **Dydd Mawrth**
5.00yp-6.00yp Step i Ddechreuwr
- **Dydd Mercher**
6.30yp-7.30yp Cymorth yn y Gampfa
5.45yp-6.30yp Spin
- **Dydd Gwener**
10.00yb-11.00yb Pêl-rwyd
2.30yp-6.30yp Sesiynau Pêl-picl Amrywiol
4.00yp-6.00yp Pêl-picl i Arddegau

GWEITHGAREDDAU MISOL

- **Dydd Iau 1^{af} y mis**
Noson Ffilm
- **Dydd Gwener 1^{af} y mis, 7.00yp**
Nosweithiau Cwis
- **Dydd Sadwrn 1^{af} y mis**
Caffi Menopos
- **Dydd Sul 3^{ydd} y mis**
Ffair Hen Bethau

☎ 01248 811200

✉ enquiries@canolfanbeaumaris.org.uk

🌐 www.canolfanbeaumaris.org.uk/

🌐 www.facebook.com/canolfan.beaumaris.7/



NEWS

Later on in the year we will launching our crowdfunding appeal to raise money to replace our Portakabin so that our children can move from the gazebo and our wellbeing classes, such as yoga and pilates, can move out of the sports hall into a warmer space.

NEW GYM!

We have experts and flexible gym memberships to help you get started.
Open to non-members.

**NEWYDDION GWYCH!
GREAT NEWS!**

**MAE O YMA!
IT'S HERE!**

**CAMPFA NEWYDD
NEW GYM**

**CAMPFA SYDD NEWYDD GI
HADNEWYDDU BELLACH AR
WAITH**

**NEWLY REFURBISHED GYM
IS NOW UP AND RUNNING**

**DOD YN FUAN CAMPFA WEDNI
UWCHRADDIO CARDIO A CHRYFEDR**

**A NEW RANGE OF CARDIO
AND RESISTANCE MACHINES**

BUDDSODDIAD O £75,000 INVESTMENT

**OFFER
newydd
BRAND new
equipment**

**CANOLFAN
BEAUMARIS**

Q&A

COMMUNITY ACTIVITIES

- **Monday** 10.00am-12.30pm
Bridge Club
- **Tuesday** 10.00am-12.00 noon
Coffee Morning (library)
- **Tuesday** 1.30pm-4.30pm
Art Group
- **Wednesday** 10.00am-4.00pm
Patchwork Class
- **Wednesday** 3.00pm-5.00pm
IT for beginners
- **Thursday** 10.00am-11.30am
Baby Group
- **Thursday** 10.00am-12.00 noon
Computers for beginners
- **Friday** 11.30am-12.30pm
Paned a Sgwrs
- **Friday** 1.30pm-3.30pm
Warm Welcome Crafts

WHAT'S COMING UP?

We have some exciting events coming up over the next few months...

Eisteddfod Môn

On 16 May-17 May Eisteddfod Môn returns to Anglesey's Seiriol area for the first time since 1973. See page 8.



Gŵyl Beaumaris Festival

The prestigious Beaumaris Festival returns from 21 May to 27 May, with an impressive programme of musical events. See pages 8 and 18.



Eyes down!

Have you been to one of our new Bingo nights yet? This will be a regular monthly event, so look out for the next one.



Northern Soul

We're planning to hold a Northern Soul Night. This vibrant music scene is enduringly popular, and is sure to be a great night. Keep an eye out for details!



CANOLFAN SEIRIOL WELLNESS CENTRE

including

- Exercise classes •
 - Tai chi •
- Acupuncture •
- Physiotherapy •
- Holistic therapies •
 - Mindfulness •
 - Osteopathy •
- Sports massage •
 - Reiki •



Contact us if you'd like
more information

Our details are given below

WARM WELCOME SPACES

Tea, coffee and cakes!
Activities include pebble painting,
felted, memory pots and
much, much more

Every Friday, 1.00pm-3.30pm

Unleash your crafty side!
Booking essential

Scrabble players needed
1.00pm-3.30pm

KIDS' ACTIVITIES

- **Monday**
4.00pm-4.45pm Football
- **Tuesday**
5.00pm-6.00pm Kids' pickleball
4.00pm-4.45pm Gymnastics
- **Wednesday**
4.00pm-4.45pm Gymnastics
- **Thursday**
4.00pm-5.00pm Trampoline
5.30pm-6.30pm Skateboarding
6.30pm-7.30pm Skateboarding
- **Friday**
4.00pm-5.30pm Teenagers Pickleball
- **Saturday**
10.00am-11.15am Roller Disco

Activities for kids during
school holidays

NEW/BEGINNERS' SESSIONS

- **Monday**
1.00pm-2.00pm Bodysculpt
5.30pm-6.30pm Boot Camp
6.45pm-8.00pm Yogalates
- **Tuesday**
5.00pm-6.00pm Beginners Step
- **Wednesday**
5.30pm-6.30pm Assisted Gym
5.45pm-6.30pm Spin
- **Friday**
9.30am-10.30am Beginners' Netball
10.00am-11.00am Netball
2.30pm-6.30pm Various Pickleball
sessions
4.00pm-6.00pm Teenage Pickleball

MONTHLY ACTIVITIES

- **1st Thursday of the month**
Film Night
- **1st Friday of the month, 7.00pm**
Quiz Night
- **1st Saturday of the month**
Menopause Café
- **3rd Sunday of the month**
Antiques Fair

(from page 21)

I have a mature *Cupressus leylandii* hedge; the standard *C leylandii* is not a nice plant, but this hedge is wide and dense, hasn't died off at the bottom and is a haven for nesting birds. I cut it periodically so that it doesn't grow out of control, and this is done in good time; this year I had the cutting done in February, well before nesting starts.



These photographs show a small part of the environmental vandalism that appears to have taken place (name given)



I know when I shouldn't cut my hedges; landowners will know this as well, and the hedges in and around Llanddona are cut well before the nesting season.

The sender of the e-mail was concerned that what can be described only as environmental vandalism appears to have taken place towards the end of March in our 'pretty, pointy piece of Anglesey', apparently on quite a large scale. The photographs show some of what has happened.

Inevitably, works on land have to take place from time to time, but they should be undertaken in accordance with whatever rules and regulations apply, so I thought that I'd look on-line to see what information there is on the subject; my search criterion was *countryside hedge cutting regulations*, and a lot of useful information came up; see a few of the links below.

The *Hedgerow management rules* are quite clear on the matter:

Cutting and trimming rules

You must not cut or trim a hedgerow that is covered by the rules from 1 March to 31 August. You must not cause or permit another person to cut or trim such a hedgerow.

They continue, with details about length, location and, of course, exemptions from the rules.

If the rules appear to have been broken the matter should be reported to the appropriate body, details of which will probably be given in some of the links below.

📄 Hedgerow management rules: cutting and trimming
www.gov.uk/guidance/hedgerow-management-rules-cutting-and-trimming

📄 Hedgerow regulations to be brought into law to protect wildlife
www.gov.uk/government/news/hedgerow-regulations-to-be-brought-into-law-to-protect-wildlife

📄 Hedgerows and the Law
<https://protectthewild.org.uk/protectors-of-the-wild/hedgerows-and-the-law/>

📄 Hedgerow management rules: new legislation update
www.nfuonline.com/updates-and-information/hedgerow-management-rules-new-legislation/

📄 Hedgerow regulations now law
<https://defrafarming.blog.gov.uk/2024/05/23/hedgerow-regulations-now-law/>

📄 In the Know: Hedgerow management rules – an update
<https://rural.struttandparker.com/article/in-the-know-hedgerow-management-rules-an-update/>

Llangoed WI

Deborah Booth, Press Officer

Llangoed WI is a friendly group of ladies from Llangoed and the surrounding areas. We usually meet at 2.00pm on the first Wednesday of the month at Neuadd Bentref Llangoed Village Hall, where we enjoy a variety of activities, including talks, crafts, music and games.

You can attend three meetings free of charge to see if you like us.

January: our ladies enjoyed group discussions about the four resolutions to be put forward to the National Annual Meeting, after which we all strained our brains with a quiz. There was more quizzing the following evening, when the Community Coach took us to the WI Hall in Llanfairpwll to take on teams from WIs around the island.

Continuing with our busy January, we

went to our "Christmas" lunch at the Bulkeley Hotel; a great time was had by all, with crackers, party hats and lovely food! Thanks to all the staff at the hotel for looking after us so well!

February: our Annual Meeting took place, followed by a very interesting illustrated talk about the National Garden Scheme by Kay Laurie. She told us about the history of the scheme and about the charities it supports. The Scheme raises an amazing amount of money each year for charity, so it is well worth visiting the gardens and supporting their efforts.

There's more information about the National Garden Scheme on its website, and turn to pages 29-31 to read about this year's local openings.

March: our meeting in March included Welsh cakes, bara brith, and Sarah Webb from Sarah's Gardens; many of you will know Sarah from Morrisons Daily in Llangoed. Sarah spoke to us about her fascinating journey to becoming a cut-flower grower and occasion florist. She went through some dried flowers that she'd brought with her, and explained their uses in dried flower arrangements.

Some of our ladies also went by community coach to the ballet at the Pontio, this time to see Romeo and Juliet, and to a beginners' bridge class which was held at the WI Hall in Llanfairpwll.

Looking forward: in April we will be finding out about sound therapy with Steph Hardy. May will see us getting crafty with Carron White, who will be guiding us through some papercraft... and our June meeting will be "what mammals are in the sea" with Elan Jones from the Sea Watch Foundation.

Other events coming up are the Federation Garden Party; an International Women's Day event with Frankie Hobro from the Anglesey Sea Zoo; and a trip to Port Sunlight and the Lady Lever Art Gallery.

📄 Sarah's Gardens/Gerddi Sarah
<https://sarahsgardens.com/>

📄 Sea Watch Foundation
www.seawatchfoundation.org.uk

📄 International Women's Day
www.internationalwomensday.com

📄 Anglesey Sea Zoo/Sw Môr Môn
www.angleseyseazoo.co.uk

📄 Port Sunlight Village Trust
<https://portsunlightvillage.com>

How to make a silent 999 call

Andrew Perrott

The Silent Solution

The Silent Solution can help when you need to call 999 but can't talk.

www.seiriolalliance.co.uk/newsletters/

It is a system that filters out large numbers of accidental- or hoax 999 calls while ensuring that people can alert police and get help when they are in genuine need but are unable to speak.

A recorded message will instruct callers who can't talk to press 55 to be put through to police. Staying silent and not pressing 55 will lead to the call being terminated.

How does it work?

If you need urgent police help but cannot speak, you should:

- Dial 999.
- Listen to the operator's questions.
- Respond by coughing or tapping your device if you can.
- If prompted, press 55 to let the operator know it's a genuine emergency and you'll be put through to the police.

Make Yourself Heard

In April 2019, The Independent Office for Police Conduct launched its *Make Yourself Heard* campaign to raise awareness of the Silent Solution system. This followed its investigation into prior police contact with a woman who was murdered by her partner. She had thought wrongly that police had her number and that, if she made a silent 999 call, they would know to come.

After police forces and domestic abuse charities reported an increase in domestic abuse-related calls during the COVID-19 pandemic, the Home Office announced the *#youarenotalone* campaign in April 2020. As a result, it refreshed its campaign materials and worked with the NPCC, Women's Aid and Welsh Women's Aid to raise awareness of this vital tool.

Relay UK service

The Relay UK service is run by BT, and is designed for people who are deaf, hard of hearing or have a speech impairment. You need to register your mobile number before using the service.

How to make a silent 999 call
www.police.uk/contact/how-to-make-a-silent-999-call/

Make Yourself Heard: Understanding the Silent Solution
www.policeconduct.gov.uk/our-work/key-areas-of-work/silent-solution

Domestic abuse: how to get help
www.gov.uk/guidance/domestic-abuse-how-to-get-help

Pryd oedd y tro diwethaf i chi wneud rhywbeth am y tro cyntaf? 🌸

Victoria Craig

Mae Hwyllo Treftadaeth Afon Fenai (HTAM) yn Elusen Gofrestredig gyda'r puffinpages@gmail.com

Comisiwn Elusennau, sydd wedi'i lleoli ym Miwmares, Gogledd Cymru. Prif flaenoriaethau HTAM yw cadw fflyd dreftadaeth o gychod hwyllo (Menai Strait One Design (MSOD)), a gredwn yw'r fflyd gyflawn hynaf o un cynllun yn y byd, yn rhifo 17 i gyd. Rydym yn cynnig y cyfle yn rhad ac am ddim i drigolion Ynys Môn a Gwynedd ddod i hwyllo gyda ni a/neu ymuno â ni yn y canolbwynt i'n helpu i warchod y llynges hanesyddol bwysig hon o gychod.

Gallwch ddarllen mwy am y dosbarth hyfryd hwn o gychod hwyllo yn **The Puffin** 45, tudalen 3.



Fflyd hollol unigryw
A truly unique fleet
(via Victoria Craig)

Hoffech chi ddod i hwyllo gyda ni fel cyfranogwr? Efallai mai dim ond fel profiad unwaith yn unig yr hoffech chi gymryd rhan, neu efallai yr hoffech chi ymwneud â hwyllo yn fwy rheolaidd.

Mae HTAM bellach wedi cynhyrchu ei raglen hwyllo ar gyfer 2025, gydag argaeledd bron bob dydd Sadwrn o 31 Mai tan ganol mis Medi. Mae rhai o'n dydd Sadwrn wedi'u harchebu'n barod ond mae gennym ni ambell ddydd Sadwrn dal ar gael. Mae'r cyfle hwn yn agored i bob grŵp oedran, a gallwch ddod draw fel sefydliad neu unigolyn.

Yn ogystal â'n sesiynau rheolaidd ar ddydd Sadwrn, rydym yn cydnabod pwysigrwydd hyblygrwydd wrth ddarparu ar gyfer amserlenni gwahanol. Felly, byddwn yn gwneud ein gorau i gynnig cyfleoedd hwyllo yn ystod yr wythnos i sefydliadau nad ydynt yn gallu ymuno â ni ar benwythnosau. Nid oes angen unrhyw brofiad hwyllo blaenorol, gan fod ein tîm ymroddedig o aelodau criw gwirfoddol yn forwyr profiadol, pob un ohonynt wedi'u gwirio gan y Gwasanaeth Datgelu a Gwahardd o ran eich diogelwch a thawelwch meddwl.

I'r rhai sydd â diddordeb mewn gwella eu sgiliau hwyllo ac o bosibl wirfoddoli fel aelodau o'r criw, rydym hefyd yn trefnu sesiynau hwyllo nos Fercher. Mae'r nosweithiau hyn yn gyfle gwyb i symud ymlaen ac ymgysylltu â'n cymuned hwyllo frwdfrydig.

Rydym yn cynnig hwyllo at ddibenion lles yn seiliedig ar ymchwil ffeithiol ar ei fanteision ar gyfer hybu iechyd a lles. Mae gan hwyllo lawer o fanteision i iechyd corfforol a meddyliol. Os ydych yn sefydliad a fyddai'n elwa o hwyllo

grŵp neu'n unigolyn a hoffai ddod i hwyllo, cysylltwch â ni, a gallwn wneud i hyn ddigwydd.

Mae hwyllo yn dda i'r corff a'r meddwl

Rydym yn gwybod on profiadau ein hunain fod hwyllo, yn enwedig mewn ardal mor arbennig ag ar yr Afon Fenai yn tonic ardderchog i bawb. Mae gwynt y mor yn rhywbeth arbennig iawn, yn ein helpu i deimlo yn fyw, hapus a chysgu gymaint gwell. Yn ogystal a hyn, mae nifer o manteision eraill hefyd.

Mae hwyllo yn ddal i'r corff far meddwl. Mae ymchwil yn cadarnhau yr effaith positif o wynt y mor, o wrando ar swm a mor ar tonnau, y manteision o fitamin D gan y haul, ar effaith gall rhyddhau endorffiniau ei gael o wneud rhywbeth rydym yn ei fwynhau. Yn ogystal, mae nifer o fanteision corfforol, gwybyddol a chymdeithasol o gymryd rhan fel yr eglurir ar ein gwefan.

Ewch i www.menaistraitsheritage.sailing.com i ddysgu mwy am pam mae hwyllo yn dod â chymaint o fanteision iechyd a lles.

Dod yn wirfoddolwr gyda HTAM

Os oes gennych angerdd am dreftadaeth, hwyllo, a chymuned, mae HTAM yn cynnig cyfle unigryw i ymgolli yn hanes morwrol Gogledd Cymru. Fel gwirfoddolwr, byddwch nid yn unig yn dysgu sgiliau hwyllo a chynnal cychod ond hefyd yn cyfrannu at warchod rhan bwysig o'n treftadaeth ddiwylliannol. Mae ymuno â'n tîm yn golygu dod yn rhan o gymuned gefnogol sy'n gwerthfawrogi traddodiad a llawenydd hwyllo. P'un a ydych am ennill sgiliau newydd, cwrdd ag unigolion o'r un anian, neu fwynhau llonyddwch y môr, rydym yn eich croesawu i fod yn rhan o'n taith.

Gyda'n gilydd, gadewch i ni gadw gwaddol y cychod hwyllo hanesyddol hyn yn fyw er mwyn i genedlaethau'r dyfodol eu trysori a'u mwynhau.

I gael rhagor o wybodaeth am ein rhaglen hwyllo neu wirfoddoli, os gwelwch yn dda e-bostiwch fi at vcraig.mshs@yahoo.com.



When was the last time you did something for the first time?

Victoria Craig

Menai Strait's Heritage Sailing (MSHS) is a Registered Charity with the Charity Commission, based in Beaumaris, North Wales. MSHS's main priorities are to preserve a heritage fleet of sailing yachts (the Menai Strait One Design (MSOD)), which we believe to be the oldest complete fleet of one design in the world, numbering 17 in total. We

offer the opportunity at no charge for residents of Anglesey and Gwynedd to come sailing with us and/or join us in the hub to help us preserve this historically important fleet of boats.

You can read more about this lovely class of yacht in **The Puffin** 45, page 3.

Would you like to come sailing with us as a participant? You may only want to participate as a one-off experience, or you may just get the bug for sailing and want to get more involved and sail more regularly.



Roedd y Clwb Sgowntiaid lleol yn edrych braidd yn falch gan eu bod wedi ennill eu ras
The local Scouts Club looking rather pleased as they had won their race
(via Victoria Craig)

MSHS has now produced its sailing programme for 2025, with availability most Saturdays from 31 May until mid-September. Some of our Saturdays are already booked but we have a few Saturdays still available. This opportunity is open to all age groups, and you can come along as an organisation or an individual.

In addition to our regular Saturday sessions, we recognise the importance of flexibility in accommodating different schedules. Therefore, we will do our best to offer sailing opportunities during the week for organisations which are unable to join us on weekends. No prior sailing experience is necessary, as our dedicated team of volunteer crew members are seasoned sailors, all of whom are DBS-checked for your safety and peace of mind.

For those interested in enhancing their sailing skills and potentially volunteering as crew members, we also organise Wednesday evening sailing sessions. These evenings provide a wonderful opportunity for progression and engagement with our enthusiastic sailing community.

We offer sailing for wellbeing purposes based on factual research on its benefits for promoting health and wellbeing. Sailing has many advantages for physical and mental health. If you are an organisation that would benefit from group sailing or an individual who would like to come sailing, please get in touch, and we can make this happen.

Sailing is good for the body and mind

We know from our own experience that

sailing in the magnificent setting of the Menai Strait is a tonic which helps us feel better and sleep better, but there are many benefits of involvement in sailing.

Sailing is good for the body and mind. Research confirms the positive effect of sea air: the calming effect of the sound of the water, the benefits of vitamin D from the sun and the release of endorphins for doing an activity we enjoy. There are in addition numerous physical, cognitive and social benefits from being involved as explained on our website.

Go to **www.menaistraitsheritage.sailing.com** to learn more about why sailing has so many health and wellbeing benefits.



Diogelu ein fflyd unigryw yn y canolbwynt
Preserving our unique fleet at the hub
(via Victoria Craig)

Become a volunteer with MSHS

If you have a passion for heritage, sailing, and community, MSHS offers a unique chance to immerse yourself in the maritime history of North Wales. As a volunteer, you will not only learn the skills of sailing and boat maintenance but also contribute to preserving an important part of our cultural heritage. Joining our team means becoming part of a supportive community that values tradition and the joy of sailing. Whether you are looking to gain new skills, meet like-minded individuals, or simply enjoy the tranquillity of the sea, we welcome you to be a part of our journey.

Together, let's keep the legacy of these historic yachts alive for future generations to cherish and enjoy.

For more information about our sailing programme or volunteering, please e-mail me at **vcraig.mshs@yahoo.com**.

Maritime Volunteer Service: Trinity House Grant and RYA Safety Boat Course

Mike Hall

The Maritime Volunteer Service is a National Charity formed over thirty years ago, with 30 units around the country.

The Menai Bridge unit has only recently reformed following COVID, with a small amount of inherited funding, numerous bits of out-of-date equipment, a Rigid Inflatable Boat (RIB) and trailer, and no premises to meet in.

Accommodation was sorted out thanks to the generous help of the vicar of our local church, St Mary's in Menai Bridge. This left us searching for much-needed funding, so a regional grant application was submitted last April to Trinity House, seeking finance for various training courses and safety equipment. At this stage we still hoped that the unit's original RIB could be brought back in to a seaworthy condition, so work commenced servicing the engine, freeing up the seized steering and putting new bearings, wheels and tyres on the trailer. As soon as the trailer was roadworthy we took the RIB to a local specialist, CG Marine, who gave us the bad news: it would cost around £5,000 to refurbish. This coincided with the unfortunate demise of our Fleetwood Unit and our inheriting their 4.5m RIB, *Tom Hale*, which is now almost ready to be launched once we source a suitable trailer.

In September Trinity House informed us of our success with our grant application, which was marvellous news, albeit late in the season; it provided us a cash injection of just under £4,000.



Suitably kitted-out! L-R: Mike Hall, Tom Gash, John Begley, Paul Gash
(via Mike Hall)

Despite the decline in weather conditions, as the unit had already self-funded a RYA Power Boat course earlier in the year we booked an RYA Safety Boat course at Plas Menai National Outdoor Centre, Caernarfon. By then, unfortunately, the winter storms had kicked in; this saw our first date in early December cancelled, courtesy of Storm Darragh, so it was rebooked for late January, a time when most sensible people are happy to sit back by the fire and celebrate Burns Night... so, despite another named storm, Eowyn, being forecast to arrive, we checked with the centre about the forecast, risk assessments and clothing available and duly undertook our course. Apart from the freezing temperatures, thermals and dry suits, the weather insisted on playing its part, as you'd expect.

Our instructor, Mo, had warned us about a local phenomenon that they called *starbursts*, which occur particularly in easterly wind conditions (Storm Eowyn), where catabatic gusts drop vertically onto the water in a totally unpredictable

manner, and we were out on the Strait just after lunch, practising recovery of capsized dinghies, when just such a gust occurred. There were two instructors and two rescue boats. The instructor in the dinghy suffered an involuntary capsizing, was pulled from the water, then two of our members assisted the staff in recovering the now-inverted dinghy which was stuck on a sandbank... how's that for realistic training!

Needless to say, we didn't venture back on the water that day, and the instructor said that 'it had been the most scared he'd been in his whole life'. Notwithstanding this, we went back for a half-day in February to complete the course, and are now looking forward to getting the *Tom Hale* back on the water and providing safety cover to any that require our services.

Our remaining grant funding is earmarked for more training: first aid and VHF radio course, safety equipment, flares, buoyancy aids and lifejackets.

Many thanks to Trinity House and Plas Menai Watersports Centre and the members of Menai Bridge MVS Unit who help to keep them all gainfully employed through the slack winter months. If you're interested in joining us, come on board; we're counting on your support so that we can help others in the local community.

No matter what your level of experience is, there's a place for you in the MVS, as long as you're at least 18 years of age (there's no upper age limit), so all are welcome.

Maritime Volunteer Service

www.mvs.org.uk

St Mary's Church
Mona Road
Menai Bridge
Anglesey
LL59 5EA

mvsmenai@gmail.com

Mike Hall, Head of Unit
07884 318482

Boots rolls out national blister pack recycling scheme

Andrew Perrott

Following a popular regional pilot Boots has rolled out a national scheme nationwide that rewards customers for recycling their empty blister packs. The blister pack recycling scheme is now puffinpages@gmail.com

available at over 800 stores across the UK after 170,000 customers signed up to a pilot of the scheme in London and the Southeast last year.

All blister packs can be recycled through the scheme, whether used previously to hold medications or vitamins, and regardless of brand. Boots Advantage Card members can now earn 100 points (worth £1) for every five empty blister packs when they drop them off at a participating Boots store and spend £5 or more. The only requirement for using the *Recycle at Boots* initiative is that the user must have Boots Advantage Card, which means that there is a financial

Boots Rolls out National Blister Pack Recycling Scheme
www.boots-uk.com/newsroom/news/boots-rolls-out-national-blister-pack-recycling-scheme/

Find Out Which Boots Stores Accept Blister Packs for Recycling
<https://bootsrecycling.co.uk/find-out-which-boots-stores-accept-blister-packs-for-recycling/>

Wellness: step lightly into summer

Patricia Lennan

May is a beautiful month when the earth hums with new growth and we welcome the warmer and longer days.

On the cusp of summer, we have broken through the cold, dark winter days, and many of us eagerly look forward to being outside as much as possible. The winter days are not the best for our health. Depression can worsen and so can aches and pains and other health conditions. Everything feels better with an uplifting dose of sunshine and sociable outdoor activities.

Although it is beneficial to keep up your regular indoor activities and exercise classes, outdoor activities can provide an extra boost for the mind and body.

As many people are aware, exercise can help to relieve mild depression, stress and anxiety by producing neurotransmitters, such as serotonin, dopamine and norepinephrine. These conditions, sustained over a long period, can affect not only our mental health but also our physical bodies,

creating aches and pains, digestive problems and sometimes more serious conditions.

Even those with a fairly stress-free life cannot avoid being touched by all the upheaval in the world at the moment. Of course, we are not all able to engage in a lot of activity or sport, so just simple walking can be really beneficial.

Mindfulness, too, can be a helpful way to ease anxiety, enabling us to feel anchored, grounded, and in tune with what our body needs, instead of being all at sea, with thoughts tossing around in our heads like a boat loose on the water. Mindfulness, though, has become a term that is banded around a lot these days, and often, it is misunderstood.

(continued on page 29)

Feel Better Gentle Exercise
Pain Management for people with long term health conditions

ONLINE CLASSES
I focus on you what you **CAN** do

Great for conditions like:
Osteoporosis Fibromyalgia Arthritis And More!

“My mobility and flexibility is very much increased, and strength greatly improved, all adding to a decrease in pain and the need to take painkillers.”

For more information, and to book your place, scan the QR code or email feelbetter@active-eat.co.uk

Jenny Oakenfull
Pain Management Coach
<https://active-eat.co.uk>

ActiveEat Active_Eat

advantage to using the initiative. The *Recycle at Boots* initiative also accepts empty beauty, health, wellness and dental products, from any brand, that cannot be recycled at home.

At mid-March the two nearest participating Boots stores were in Bangor and Caernarfon. You'll find more information in the links below.

Recycle at Boots
www.boots.com/shopping/boots-recycling-scheme?srsId=AfmBOraT75xIB1fyyP48aEAWR85amM4NfdFp5_Wn0orcarz2KzUG2fV

Recycle your medicine & vitamin blister packets
www.boots.com/shopping/boots-recycling-scheme/blister-pack-recycling



Snowdonia Physiotherapy

A new physiotherapy clinic in Beaumaris with Denry Aal, Chartered Physiotherapist



CANOLFAN LLES SEIRIOL
WELLNESS CENTRE



- Muscle and Joint Pain
- Sprains and Strains
- Tendon Problems
- Arthritis
- Sports Injuries
- Work-Related Injuries
- Rehabilitation following Orthopaedic Surgery, Fractures and Joint Replacements

Get in touch to see how we can help:

07900 339605

Seiriol Wellness Centre,
Beaumaris Library, LL58 8AL

snowdoniaphysiotherapy.co.uk



The Chartered Society of Physiotherapy is the professional, educational and trade union body for the UK's 65,000 chartered physiotherapists, physiotherapy students and assistants.

Denry Aal is registered with the Health & Care Professions Council (PH84906) and is a member of the Chartered Society of Physiotherapists.



Acupuncture

Vivien Shaw PhD Dip Ac MBAC

Vivien is a professional acupuncturist with over 30 years' experience. She specialises in helping with pain relief and anxiety disorders.

Call or email to see if acupuncture could help you

vivienshaw3@gmail.com

07971 536205

<https://seiriolwellnesscentre.co.uk/acupuncture>
<https://www.nhs.uk/conditions/acupuncture/>



THE ISLAND OSTEOPATH

Osteopathic care for adults, babies and children from your local family Osteopath

@ Seiriol Wellness Centre, Canolfan
Beaumaris & Beaumaris Library, LL58 8AL



- Back pain
- Joint pain
- Shoulder pain
- Sciatica
- Babies and children
- Sport injuries
- Fibromyalgia
- Neuralgia
- Tension



OSTEO YR YNYS

Book online at: www.theislandosteopath.com or
www.osteoyrynys.com Tel: 07986 340578



SCAN ME



ENAIID TAWEL
Serene Soul



Reiki a Therapi Holistig
Reiki and Holistic Therapy

gyda / with Tanya Hughes
07799 319581

Canolfan Lles Seiriol Wellness Centre
LL58 8AL

tanyamariehughes@gmail.com
www.seiriolwellnesscentre.co.uk

Reiki - £35
Adweitheg / Reflexology - £35
Tylunio Pen Dull Indiaidd /
Indian Head Massage - £35



(from page 27)

Having used mindfulness myself when going through illness, and later training as a mindfulness coach, I can vouch for its effectiveness. It doesn't have to be complicated or involve meditation necessarily.

There are some simple techniques which anyone can safely use, including mindful walking. It is best to begin this practice in your home or garden. If you have mobility issues or feel unsafe, keep a chair nearby. Find a suitable place with a flat surface where you can walk for thirty paces or so. To begin, stand tall and feel the connection of your feet with the floor or the earth beneath you. Then focus on each movement of the foot as it makes contact with the ground and feel the physical experience of feet walking – no rushing – nowhere to go. Slow your walking right down, noticing the footfall.

You may want to develop this practice on a regular walk outside, being open to sights and sounds around you. Be present with your walking; but if your mind drifts too much, come back to standing for a moment, feeling your feet on the floor.

At this time of year, walking is a wonderful chance to enjoy the aromas, sounds and beauty of nature, engaging all your senses in the magic of May and the oncoming season.

I know a bank where the wild thyme blows
Where oxlips and the nodding violet grows
Quite over-canopied with luscious woodbines
With sweet musk-roses and with eglantine.

(William Shakespeare: *A Midsummer Night's Dream*)

A Mindfulness Group is held each Tuesday at Canolfan Hamdden Beaumaris Leisure centre with Annette Jones.

Please contact the Canolfan for more details.

☎ 01248 811200

✉ enquiries@canolfanbeaumaris.org.uk

Exercise for the over-60s

Andrew Perrott

Wear some comfortable clothing that allows ease of movement, and stand on a comfortable surface where you have plenty of room at each side.

- With a 5lb potato bag in each hand, extend your arms straight out from your sides and hold them there as long as you can. Try to reach a full minute, then relax.
- Each day you'll find that you can hold this position for a little longer.

puffinpages@gmail.com

- After a couple of weeks change to 10lb potato bags.
- When you feel confident, try 20lb potato bags. Eventually you'll feel confident enough to try 50lb potato bags and hold your arms straight out for more than a full minute. I'm now at this level.

After you feel confident at that level, put a potato in each bag.

Newyddion Eglwys Bro Seiriol

Parch Huw Butler, Arweinydd Ardal Gweinidogaeth Bro Seiriol

Ers i mi drwyddedu fel Arweinydd Ardal y Weinyddiaeth yma ym Mro Seiriol yn ystod mis Chwefror, mae wedi bod yn bleser dechrau archwilio cyfoeth bywyd cymunedol a hanes y gornel ddwyreiniol brydferth hon o Ynys Môn. Rydym yn fendigedig i gael parhad o drefnadaeth Gristnogol sy'n rhychwantu dros 1,500 mlynedd gyda sbectwm cyfan o addoliad, celf a phensaernïaeth i dynnu arno a'i brofi.

Wrth ymweld â Chastell Biwmares ar Ddydd Gŵyl Dewi, cefais fy synnu o ddarganfod y capel hardd o'r 13^{eg} ganrif wedi'i guddio o fewn muriau'r gadarnle. Dechreuais feddwl sut beth fyddai wedi bod i fod wedi addoli yno, o bosibl ynghyd â'r Brenin Edward I yn gwyllo o'i oriel ochr? (yn dibynnu ar eich persbectif hanesyddol, fodd bynnag, efallai y byddai'n well gennych beidio â bod yno gydag Edward I!).

Ychydig wythnosau'n ddiweddarach, fe wnes i brofi blas o addoli Canoloesol ym Mhriordy Penmon gyda'r canu gwrthbwynt hardd yn adleisio o amgylch yr oriel sy'n gartref i'r cerrig Celtaidd hynafol a ganwyd gan Gôr Siambr KANA.

Roedd yn wirioneddol dawel ac mor deimladwy fel pe bai'n teithio yn ôl 7 canrif ac ymuno ag addoli'r Canonïaidd Awstinaidd – pa mor anhygoel!

Os hoffech brofi blas o'r eglwys ganoloesol mae cyfle arall yn ystod Wythnos Gŵyl Biwmares pan fydd Cantorion Monteverdi yn arwain Evensong Gorawl yn Eglwys y Santes Fair & Sant Nicolas, Biwmares ddydd Sul 25 Mai am 6.00yh. Dewch draw i gael eich dyrchafu gan y gerddoriaeth hardd a'i orchuddio o fewn parhad addoli i lawr trwy'r canrifoedd...

☎ 07864 765382

✉ huwbutler@churchinwales.org.uk

📍 Ardal Weinidogaeth Bro Seiriol
Ministry Area
www.broseiriol.net

📍 Eglwys Bro Seiriol Churches
www.facebook.com/BroSeiriol/



Bro Seiriol Churches news

Rev Huw Butler, Ministry Area Leader of Bro Seiriol

Since my licensing as Ministry Area Leader here in Bro Seiriol during February it has been a delight to begin to explore the richness of community life and history of this beautiful eastern corner of Ynys Môn. We are blessed to have a continuity of Christian heritage spanning over 1,500 years with a whole spectrum of worship, art and architecture to draw upon and experience.

Visiting Beaumaris Castle on St David's Day I was amazed to discover the beautiful 13th century chapel hidden away within the walls of the stronghold. I began to wonder what it would have been like to have worshipped there possibly along with King Edward I watching from his side gallery? (depending upon your historical perspective, however, perhaps you would rather not have been there with Edward I!).

A few weeks later, I actually did experience a flavour of mediaeval worship at Penmon Priory with the beautiful counterpoint singing echoing around the gallery which houses the ancient Celtic stones sung by the KANA Chamber Choir.

It was truly serene and so very moving as if to travel back 7 centuries and join with the worship of the Augustinian Canons – how amazing!

If you would like to experience a flavour of the mediaeval church there is another opportunity during Beaumaris Festival Week when the Monteverdi Singers will lead Choral Evensong at the Church of St Mary & St Nicholas, Beaumaris, on Sunday 25 May at 6.00pm. Come along to be uplifted by the beautiful music and enfolded within the continuity of worship down through the centuries...

☎ 07864 765382

✉ huwbutler@churchinwales.org.uk

📍 Ardal Weinidogaeth Bro Seiriol
Ministry Area
www.broseiriol.net

📍 Eglwys Bro Seiriol Churches
www.facebook.com/BroSeiriol/

The National Garden Scheme in North Wales 2025...

Kay Laurie, NGS County Organiser

The National Garden Scheme (NGS) has some wonderful gardens opening this year across Gwynedd and Anglesey, including a host of exciting new gardens to visit.

Through the generosity of garden owners who opened their gardens to the public, the NGS donated over £3.5 million in 2024 to nursing and health beneficiaries. Sums distributed in

December 2024 included:

- Macmillan Cancer Support: £450,000
- Marie Curie: £450,000
- Hospice UK: £450,000
- Carers Trust: £350,000
- The Queen's Nursing Institute: £425,000
- Parkinson's UK: £350,000

Charities have been supported by the NGS for decades, and this sustained funding supports their long-term planning. Smaller sums, still substantial, go to charities supporting gardeners and those who link together gardens and health, including the Army Benevolent Fund, The Country Trust and others.

The NGS also awards grants to small charities working with communities to improve health and wellbeing. This year Growing for Change Organic Market Garden at Moelyci Farm, Tregarth, received a grant. Visit them to buy their wonderful produce and find out more about what they do.

📄 Ffarm Moelyci: The Growing Space
www.moelyci.org/the-growing-space/

You can help us raise even more this year by inviting your family and friends to join your garden visits. Many gardens offer delicious cakes and refreshments and sell unusual plants, and many also welcome dogs on leads. It's a lovely way to support these important charities whilst enjoying yourself, too.

Please see the yellow cut-out-and-keep panel on this page, and look out for the yellow booklets that are circulating, or visit the NGS website and click on the *Find a garden* link. This allows you to find gardens according to specific dates and locations. The links are given below.

Gwynedd and Anglesey NGS Facebook and Instagram pages have information on garden openings and special events. Follow us to be alerted to forthcoming Open Gardens or unexpected cancellations.

A well-kept secret is 'open by arrangement' gardens that can be visited during the season. It's a special way to arrange a social trip out for any group of people, including family and friends. Indeed, there's a very special Japanese Garden, Cuddfan, close to Llanddona that will open this summer by arrangement... who knew? To book a visit contact Jackie Blakeley at blakeley@btinternet.com for more details.

Why not suggest organising an outing for a club or group to which you belong? An e-mail or phone call to the garden owner is all that's usually required: visitor numbers and availability vary.

For more information and detailed directions to all the open gardens listed, we recommend that you visit the NGS website before you visit, for full and up-to-date information about our garden openings.

♦ ♦ ♦

Croeso i'n gerddi yn y rhan syfrdanol brydferch hon o Gymru. Chwiliwch yn *Find a garden* am gerddi a dyddiadau fydd o ddiddordeb i chi. Dilynwch tudalennau Facebook Gwynedd a Môn NGS am fwy o wybodaeth am y gerddi fydd ar agor yn eich ardal leol.

Am fwy o wybodaeth a chyfarwyddiadau manwl i'r gerddi, ewch i'r wefan canlynol.

📄 National Garden Scheme
<https://ngs.org.uk>

📄 Find a garden
<https://findagarden.ngs.org.uk>

📄 Enjoy an exclusive garden visit with our wonderful By Arrangement option
<https://ngs.org.uk/enjoy-a-special-visit-to-a-garden-gem-with-our-by-arrangement-option/>

NGS Open Gardens 2025 May-September

- 🌸 **Saturday 3 May**
 - Llanidan Hall, Brynsiencyn LL61 6HJ
- 🌸 **Sunday 4 May**
 - Sunningdale, Bull Bay LL68 9SD
- 🌸 **Sunday 11 May**
 - Glan Llyn, Llanberis LL55 4EL
- 🌸 **Saturday 17 May**
 - **NEW** Plas Pont y Cribyn, Llannor, Pwllheli LL53 8LZ
- 🌸 **Sunday 18 May**
 - Cyplau, Llanbedr LL45 2ND
 - Tyn y Pant, Boduan, Pwllheli LL53 6DT
- 🌸 **Sunday 25 May**
 - Gwaelod Mawr, Caergeiliog LL65 3YL
 - **NEW** Y Felin Rhyd Hir, Efailnewydd, Pwllheli LL53 8TN
- 🌸 **Saturday 14 June**
 - **NEW** Bedlwyn, Tyn-y-Groes, Conwy LL32 8SR
 - Crûg Farm Plants, Griffiths Crossing, Caernarfon LL55 1TU
 - Tŷ Cadfan Sant, National Street, Tywyn LL36 9DD
- 🌸 **Sunday 15 June**
 - Pensychnant, Sychnant Pass, Conwy LL32 8BJ
 - Tŷ Cadfan Sant, National Street, Tywyn LL36 9DD
- 🌸 **Saturday 21 June**
 - Llanidan Hall, Brynsiencyn LL61 6HJ
 - Llwydiarth, Mynytho LL53 7RW
 - **NEW** Llys Ifor, Ffordd Pont Lloc, Nebo LL54 6EL
 - **NEW** Nant Noddfa, Nebo LL54 6RY
- 🌸 **Sunday 22 June**
 - Cyplau, Llanbedr LL45 2ND
 - Llwydiarth, Mynytho LL53 7RW
- 🌸 **Saturday 28 June**
 - Mynydd Cors Goch, Llanbedrgoch LL76 8TZ
- 🌸 **Saturday 5 July**
 - Llanidan Hall, Brynsiencyn LL61 6HJ
- 🌸 **Saturday 12 July**
 - **GROUP OPENING** Llanddona Village Gardens, Llanddona LL58 8TU, etc.
- 🌸 **Sunday 13 July**
 - Pensychnant, Sychnant Pass, Conwy LL32 8BJ
 - Treborth Botanic Garden, Bangor University, Bangor LL57 2RQ
- 🌸 **Saturday 19 July**
 - Caswallon, Llanelian LL68 9NN
 - Sunningdale, Bull Bay Road, Bull Bay LL68 9SD
- 🌸 **Sunday 20 July**
 - Glan Llyn, Llanberis LL55 4EL
- 🌸 **Saturday 26 July**
 - Coed Tŷ Mawr, Pwllheli LL53 8EH
- 🌸 **Sunday 27 July**
 - Coed Tŷ Mawr, Pwllheli LL53 8EH
 - Maenan Hall, Maenan, Llanrwst LL26 0UL
 - Tyn y Pant, Boduan, Pwllheli LL53 6DT
- 🌸 **Sunday 3 August**
 - **NEW** Plas Pont y Cribyn, Llannor, Pwllheli LL53 8LZ
- 🌸 **Sunday 17 August**
 - **NEW** The Granary, Felin Hen Road, Bangor LL57 4BB
 - **NEW** Growing for Change Organic Market Garden, Felin Hen Road, Bangor LL57 4BB
- 🌸 **Sunday 31 August**
 - Llwyn Onn, Penmon LL58 8SG
 - The Old School, Penmon LL58 8RU
- 🌸 **Saturday 6 September**
 - **NEW** Castle Court, Rating Row, Beaumaris LL58 8AL
 - **NEW** Y Felin Rhyd Hir, Efailnewydd, Pwllheli LL53 8TN
- 🌸 **Sunday 7 September**
 - Gwenfro Uchaf, Lon Gwenfro, Talwrn LL77 8JD
 - Plannwch y Plas, Dinas Mawddwy, Machynlleth SY20 9AQ

Facebook: Gwynedd and Anglesey NGS
www.facebook.com/gwyneddandangleseyngs/

...and in Seiriol Ward

Andrew Perrott

You'll find a list of the Open Gardens 2025 in Anglesey, Conwy and Gwynedd on the previous page; the list stretches from Conwy itself, via Anglesey, right down to Tywyn and Machynlleth...so get your diaries out!

As you'll see from the list below there will be Open Gardens right on our doorstep this year, a group of nine in Llanddona on 12 July, and others in Penmon and Beaumaris, and also further afield, including Brynisiencyn and Bull Bay.

The insert gives information about the individual Llanddona Open Gardens and a map. If the insert is missing, you'll find it on-line at www.seiriolalliance.co.uk/newsletters/ as the last two pages of **The Puffin** 52:

Saturday 12 July, 11.00am-4.00pm

- ☼ Tyddyn Bach, Llanddona LL58 8UN
- ☼ Capel Peniel, Llanddona LL58 8TU (the War Memorial; public access at any time)
- ☼ Tŷ Capel Peniel, Llanddona LL58 8TU
- ☼ Glangors, Llanddona LL58 8TU
- ☼ Pen-y-Gorllewin, Llanddona LL58 8TU
- ☼ Y Gilfach, Llanddona LL58 8TS
- ☼ Neuadd Bentref Llanddona Village Hall, LL58 8TS
- ☼ Cefn Farm, Llangoed LL58 8PW
- ☼ Bryn Rhedyn, Llangoed LL58 8PW

The gardens are all different: some are neat as a pin, a couple are 'a work in progress', and others working gardens/smallholdings.

All are interesting and full of colour, and many have spectacular views over the Menai Strait, Red Wharf Bay and across the breadth of Anglesey.

Saturday 31 August

- ☼ Llwyn Onn, Penmon LL58 8SG
- ☼ The Old School, Penmon LL58 8RU

Saturday 6 September

- ☼ Castle Court, Rating Row, Beaumaris LL58 8AL

From the NGS booklet *Gardens open for charity: Anglesey, Conwy, Gwynedd, Ceredigion, Carmarthenshire & Pembrokeshire 2025...*

☼ Croeso i erddi amrywiol Gorllewin Cymru

Dewch i ddarganfod yr amrywiaeth ardderchog hon o erddi amrywiol, wedi'u hamgylchynu gan olygfeydd

puffinpages@gmail.com

gwych o fynyddoedd i'r arfordir a'r môr. Mae gennym ddetholiad mawr o erddi newydd ac rydym yn ail croesawu'r gerddi sydd wedi agor yn y gorffennol. Mae cymaint i'w weld a'i brofi, beth am sgwrsio a pherchnogion selog yr ardd a manteisio ar eu profiad a'u gwybodaeth? Mae perchnogion gerddi yn bobl arbennig iawn sy'n rhannu eu manau preifat gyda'r cyhoedd er mwyn iddynt eu mwynhau. Mae'r rhan fwyaf yn cynnig paned o de a chacen flasus i'ch croesawu a'r cyfan gyda'r nod o godi arian i'r elusennau a gefnogir gan y Cynllun Gerddi Cenedlaethol.

Diolch yn fawr i berchnogion ein gerddi, ein hymwelwyr, ein cefnogwyr a'n gwirfoddolwyr, gyda'ch cefnogaeth a'ch rhoddion, gallwn helpu cymaint o elusennau. Diolch hefyd i'n hysbysebwr a alluogodd i ni gynhyrchu'r llyfryn hwn. Cadwch lygad am y gerddi hynny sydd hefyd yn cynnig ymweliadau trwy drefniant, cyfle i fynd gyda grŵp o ffrindiau neu glwb.

Os gwelwch yn dda, edrychwch ar ein gwefan www.ngs.co.uk i gael y wybodaeth ddiweddaraf, bydd hyn yn cynnwys gerddi agored dros dro neu unrhyw newidiadau i'r trefniadau presennol.

☼ Welcome to the diverse gardens of Western Wales

Discover this excellent array of varied gardens, surrounded by the fantastic scenery of mountains to coast and sea. We have a large selection of new gardens and a welcome return to those who have opened previously. There is so much to see and experience, why not chat to the enthusiastic garden owners and take advantage of their experience and knowledge? Garden owners are very special people who kindly share their private spaces with the public for them to enjoy. Most offer a welcome cup of tea and delicious cake and all with the aim of raising money for the charities supported by the National Garden Scheme.

Many thanks to our garden owners, our visitors, supporters and volunteers, with your support and donations we can help so many charities. Thanks also to our advertisers who enabled the production of this booklet. Look out for those gardens that also offer visits by arrangement, an opportunity to go with a group of friends or a club.

Please do check our website www.ngs.co.uk for the most up-to-date information, this will include pop-up open gardens or any changes to existing arrangements.

Facebook: Gwynedd and Anglesey NGS
<https://ngs.org.uk>

Find a garden
<https://findagarden.ngs.org.uk>

Enjoy an exclusive garden visit with our wonderful By Arrangement option
<https://ngs.org.uk/enjoy-a-special-visit-to-a-garden-gem-with-our-by-arrangement-option/>

Facebook: Gwynedd and Anglesey NGS
www.facebook.com/gwyneddandangleseyngs/



Seiriol Men's Shed

Steve Jones

A growing membership!

Our membership continues to grow! Ritchie has recently set up a dedicated Facebook page which has created a lot of interest in our activities at Haulfre and considerably increased our member numbers. Consequently, we're aiming to open our workshop and crafting room for two additional days a week, Monday and Friday. See our Facebook link below.

It is likely that we will be sharing our workshop with other community groups in the near future. A group of ladies from Llangoed is looking to develop their DIY and woodworking skills. They are hoping initially to use the workshop for two Wednesdays a month but, if successful, additional Wednesdays may be proposed to accommodate increased membership.

Due to the increased interest in the workshop Eirwyn, the Site Manager, has secured funding which will enable us to purchase a comprehensive range of battery power tools that will be available to the groups using the facility. These new cordless tools will also enable us to undertake site projects for the community where mains electricity is not available.

The observatory

The observatory which our members refurbished and installed at Plas Bodfa is to be included in a television programme being produced for the BBC to highlight the work being carried out by the Wales Dark Sky Project. Bob and I were invited along to take part in the filming at Plas Bodfa which was hosted by Jonathan Lewis.

Fortunately, the weather was kind and the skies clear. We were joined by Dani, the Dark Sky co-ordinator, and Charles Gersham Spendlove, a local astronomer and telescope buff. We'd met both of them when we dismantled and removed

the observatory from its previous home in Deganwy. Charles had already set up the main telescope in the observatory and a couple of smaller scopes in the garden.

We were introduced to Nia Mai Lynch, the Director, and Huw Erddyn, the producer for the program. Bob and I were fitted with microphones ready for action. Filming went on for a couple of hours, but I imagine that, once edited, the evening's filming will be a small part of the thirty-minute finished programme, which has been filmed in various dark sky areas of Wales. Dates for the airing of the show are yet to be confirmed but we were informed that it will be shown on BBC Wales after the One Show.

A busy workshop

Our workshop has been kept busy with a lot of items of garden furniture being brought in for repair and revamping. We've completely rebuilt several garden benches and have others waiting for our attention. Garden tools are also arriving for repair or sharpening.

Bird boxes are a regular request at this time of year, and we have received a request for ten boxes and three hedgehog homes.

Derek the Dalek

Derek the Dalek is alive and ready to exterminate!



Mess with Derek at your peril...
(Steve Jones)

After many hours of work and head-scratching Derek is finally up and running. There are a few small modifications to be made to make sure that he is roadworthy but, he has already made quite an impression on the locals. Once we're happy that he's ready to be let loose he will be available to attend local functions and events. You'll see from the photograph that he looks really impressive. We were lucky to be able to work on a really solid piece of initial building to produce the final article: a very lifelike and durable Dalek.

Davros will be handling his appointments

from his office on the planet Skaros! Alternatively, you can contact us via our Facebook page.

Our gardens

Our gardens will be more productive this year, we hope. The netted tunnel is now finished, and the raised beds are being planted up. We've constructed a raised platform at the back of the tunnel and a variety of strawberry plants have been planted in growbags. The vegetable beds are being prepared and will be planted up with a varied selection of produce.



Derek told us he was from Devon. 'What part?' we asked. 'Exeter, mate... Exeter, mate,' he replied...

Repurposing

As materials become ever more expensive, we try to repurpose where possible. Second-hand timber is always welcome at our workshop as it is relatively easy for us to strip and rework. Old furniture is a great source of quality hardwoods and has many uses for a variety of projects.

Join us!

We meet for a few hours each week, on Tuesdays and Thursdays. If you have time on your hands and are interested in any of our activities, or would just enjoy some company, why not call over and see what we can offer you...or maybe what you can offer us!

New members are always welcome. Subscriptions are £10 a month, and members need to be DBS-checked because adults with learning difficulties occupy the same area. We deal with this for members.

☎ Steve Jones 07368 219048
Mike Thomas 07941 103386

✉ mensshedseiriol@gmail.com

📱 Seiriol Men's Shed
www.facebook.com/profile.php?id=61564967474652

📍 Seiriol Men's Shed
The Flat
Gerddi Haulfre
Llangoed
LL58 8RY

You'll find more information and directions on page 13.

📱 Dark Skies Wales
<https://landscapeswales.org.uk/dark-skies/>

📱 Discovery in the Dark Wales: Project NOS
www.discoveryinthedark.wales/project-nos

📱 Gazing to the Welsh heavens
www.wales.com/visit/visiting-wales/dark-skies-reserves-wales

📱 Stars align as Wales leads the UK in dark skies protection
www.gov.wales/stars-align-wales-leads-uk-dark-skies-protection



Neuadd Bentref Llanddona: newyddion

Robert Macaulay, Paul Gash

Wrth i 2025 fynd rhagddi gyda digwyddiadau a gweithgareddau newydd yn y Neuadd Bentref, dyma adolygiad o'r hyn sydd wedi bod yn digwydd!

Y llynedd

25 Hydref: Parti Calan Gaeaf

Cafwyd hwyl fawr gan bawb, gyda gemau parti a gwobrau am y gwisgoedd gorau. Edrychwch allan am ddyddiadau ar gyfer yr un nesaf.



25 Hydref: Parti Calan Gaeaf
25 October: Halloween Party
(Miriam Williams)

23 Tachwedd: Ffair Nadolig Neuadd y Pentref

Ffair Nadolig draddodiadol gyda lluniaeth a stondinau gan wneuthurwyr lleol, crefftwyr, artistiaid a chynhyrchwyr coginio crefftus.

29 Tachwedd: Cinio Nadolig Caffi Ni

Cinio Nadolig o dwrci rhost gyda'r trimins i gyd. Roedd presenoldeb cynhwysedd yn sicrhau cegin brysyr a

www.seiriolalliance.co.uk/newsletters/

bwytaï hapus yn gadael gyda stumogau llawn.

Rholiwch ymlaen y digwyddiad eleni!



29 Tachwedd: Cinio Nadolig Caffi Ni
29 November Caffi Ni Christmas Dinner
(Robert Macaulay)



14 Rhagfyr: Gwneud Torchau a The Prynhawn

Diwrnod llawn hwyl yn Neuadd y Pentref yn crefftio torchau o dan gyfarwyddyd Sarah o Gerddi Sarah. Gweinwyd cacennau blasus gyda the a choffi yn y prynhawn gan wirfoddolwyr y Neuadd Bentref.

Archebwch ar gyfer 29 Tachwedd eleni.

18 Rhagfyr: Addurniadau Pen Bwrdd
Digwyddiad a fynychwyd yn dda gyda llawer o fwynhad i'r holl gyfranogwyr, gan gynnwys addurniad personol wedi'i wneud â llaw i fynd adref gyda nhw ar ddiwedd y dydd.

Cofiwch archebu eich lle yn nigwyddiad eleni ar 17 Rhagfyr.

Eleni

22 Chwefror: Disgo Tawel

Digwyddiad hwyliog ac egniol a gynhaliwyd i blant. Mwynhawyd yn fawr gan bawb a gymerodd ran.

Roedd mynediad yn £5 y plentyn, gyda'r elw yn mynd i Asthma a Lung UK.

Mae digwyddiadau a gweithgareddau newydd eraill sydd wedi'u cyflwyno yn Neuadd y Pentref yn cynnwys: Happy Hound Gang, Nifty 6's, Dru Yoga gyda Saroj, ac Ymwybyddiaeth Ofalgar, a fydd yn parhau yn 2025.

Gweler *What's happening where?* phryd am fanylion: tudalen 9.



The Governor's Quick Crossword no 20: solution



Fianchetto 66's Chess no 11: solution

1 Rxd2+ Ka1 (or Kb1 or Kc1)

2 Qe1#

In plain language, the white rook moves six squares down, taking a black pawn and putting the black king in check. The black king has three possible escape squares, but all three result in the white queen moving diagonally down and to the left two squares, thus delivering checkmate.

Llanddona Village Hall: news
Robert Macaulay, Paul Gash

As 2025 progresses with new events and activities at the Village Hall, here's a review of what's been happening!

Last year

25 October: Halloween Party

Great fun was had by all, with party games and prizes for the best costumes. Look out for dates for the next one.

23 November: Village Hall Christmas Fair

A traditional Christmas Fair with refreshments and stalls by local makers, crafters, artists and artisan culinary producers.



23 Tachwedd: Ffair Nadolig Neuadd y Pentref
23 November: Village Hall Christmas Fair
(Robert Macaulay)

29 November: Caffi Ni Christmas Dinner

A Christmas lunch of roast turkey with all the trimmings. Capacity attendance ensured a busy kitchen and happy diners left with full stomachs.

Roll on this year's event!

14 December: Wreath Making and Afternoon Tea

A fun-filled day at the Village Hall crafting wreaths under the direction of Sarah of Sarah's Gardens. Delicious cakes were served with tea and coffee in the afternoon by the Village Hall volunteers.

Book for 29 November this year.



14 Rhagfyr: Gwneud Torchau a The Prynhawn
14 December: Wreath Making and Afternoon Tea
(Miriam Williams)

18 December: Tabletop Decorations

A well attended event with much enjoyment for all participants, including a personalised hand-crafted ornament to take home at the end of the day.

Be sure to book your place at this year's event on 17 December.

This year

22 February: Silent Disco

A fun and energetic event that was held for children. Thoroughly enjoyed by all who took part.

Entry was £5 per child, proceeds going to Asthma and Lung UK.

Other new events and activities which have been introduced at the Village Hall include: Happy Hound Gang, Nifty 60s, Dru Yoga with Saroj, and Mindfulness, which will continue in 2025.

See *What's happening where?* for details: page 9.



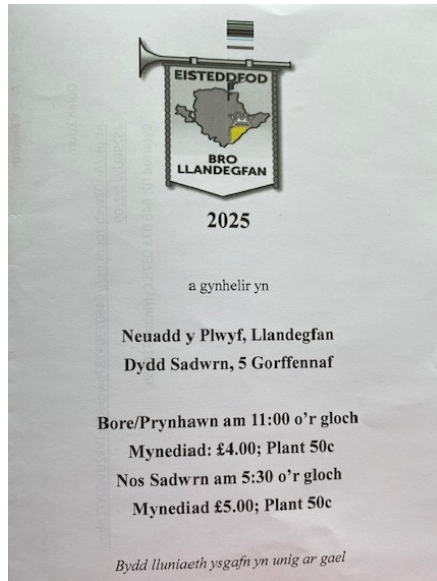
Steddfota yn Llandegfan 🍁
Sian Arwel Davies, Trysorydd

Mae prysurdeb mawr yn Llandegfan flwyddyn yma gan ein bod ynglwm â thair Eisteddfod.

Cynhelir Eisteddfod Môn Bro Seiriol Beaumaris 2025 yn Ganolfan ar nos Wener a dydd Sadwrn, 16 a 17 Mai. Mae cynnyrch cartref cystaldeuwyr wedi cyrraedd yn barod ac mae pwyllgor diwyd iawn yn brysur codi arian. Mae cynnal eisteddfod yn ddrud!

Cynhelir Cystadleuaeth Dysgwr y Flwyddyn yn Neuadd y Plwyf, Llandegfan ar 13 Mai gyda Aled Hughes, Llanfairpwll yn beirniadu. Enwau ymgeiswyr i fewn erbyn 30 Ebrill. Croeso i ddysgwyr, tiwtoriaid, teuluoedd a ffrindiau i noson o hwyl a sbri i ddechrau am 7.00yp.

Yn flynyddol ar Sadwrn cyntaf mis Gorffennaf – 5^{ed} eleni – cynhelir Eisteddfod Bro Llandegfan. Rydym yn brysur yn trefnu honno ac ar yr un pryd, mae gweithgareddau codi arian at Eisteddfod Genedlaethol yr Urdd 2026!



Rhestr testunau 2025 Eisteddfod Bro Llandegfan Llandegfan Eisteddfod programme 2025 (Siân Arwel Davies)

Mae digon o waith i unrhyw un â diddordeb!

Bydd testunau ar gael ar wefan Cymdeithas Eisteddfodau Cymru.

📧 Cymdeithas Eisteddfodau Cymru
<https://steddfota.cymru/wp/>
www.steddfota.org



Steddfota in Llandegfan

Siân Arwel Davies, Treasurer

There's much activity in Llandegfan this year as we are involved with three Eisteddfodau.

Eisteddfod Môn Bro Seiriol Beaumaris 2025 will be held at the Canolfan on Friday evening and Saturday, 16-17 May. Written competitions have already arrived and there is a very active committee busy raising funds.

Staging an eisteddfod is expensive! The Welsh Learner of the Year Competition will be held at Llandegfan Parish Hall on 13 May at 7.00pm with Aled Hughes adjudicating. Competitors' names to be submitted by 30 April. Learners, tutors, family and friends are cordially invited to join in an evening of fun starting at 7.00pm.

On the first Saturday of July every year – it's the 5th this year – the Eisteddfod Bro Llandegfan is held. We are busy organising that, and at the same time there are activities to raise funds for the 2026 National Urdd Eisteddfod – plenty

of work for anyone interested!

The programme of competitions are available on the Cymdeithas Eisteddfodau Cymru/Wales Eisteddfodau Society website.

📧 Cymdeithas Eisteddfodau Cymru
<https://steddfota.cymru/wp/>
www.steddfota.org

Merched y Wawr, Llandegfan

Siân Arwel Davies, Cydlynnydd, Merched y Wawr

Flwyddyn yma, ymunodd Cangen Llandegfan gyda Cangen Porthaethwy i ddathlu Gŵyl Dewi ein nawddsant. Cawson ein diddanu gan ddisgyblion o Ysgol David Hughes dan arweiniad Bari Gwilliam.



Disgyblion o Ysgol David Hughes o dan gyfarwyddyd Bari Gwilliam Pupils from David Hughes School under the direction of Bari Gwilliam (Siân Arwel Davies)

Roedd gwahanol eitemau yn cynnwys unawdau, deuawdau, sgets, canu offeryn a'r cyfeilio medrus ar y piano a'r cornet yn ardderchog a mwynhawyd yr arlwy yn fawr iawn.

Gallwn fod yn falch iawn o'r disgyblion a'r staff o Ysgol David Hughes.

Roedd aelodau'r gangen wedi paratoi te hyfryd dros ben a chafwyd amser i sgwrsio'n hamddenol dros baned cyn troi am adra.

Llawer o ddiolch am y croesoe a'r gwahoddiad.

♦ ♦ ♦

Merched y Wawr, Llandegfan

Siân Arwel Davies, Co-ordinator, Merched y Wawr

This year, the Llandegfan Branch joined the Porthaethwy Branch to celebrate St David. We were entertained by pupils from David Hughes School under the direction of Bari Gwilliam.

The different items included solos, duets, sketches, playing an instrument, and the accompaniment of the piano and the cornet were excellent.

We can be very proud of the pupils and staff of David Hughes school.

The Borth members had prepared a lovely tea and we had time to have a relaxed chat over a paned, sandwiches and cakes before turning for home.

Many thanks for the welcome and the Invitation.

Newyddion ddiweddaraf o'r

Rhandiroedd Biwmares

Jon Keymer

Mae 2025 yn siapio i fyny i fod yn flwyddyn fawr i'r plot cymunedol yn ogystal â'r Cymdeithas Rhandiroedd Biwmares gyfan. Gobeithio fydd y hir ddisgwyliedig cymorth arianol o'r Cyngor Sir Ynys Môn yn dwad gan gynnwys y ddarpariaeth twnel tyfi ar gyfer y defnydd pawb. Gobeithio fydd hyn yn ei le erbyn diwedd y gwanwyn. Mi fydd hyn yn helpu tyfwyr dod â eginblanhigion ymlaen mewn amodau gorau posibl cyn iddyn nhw cael eu plannu allan mewn cyflwr sydd mor gryf ac wedi'i warchod yn dda â phosib. Mae hynny yn hanfodol er mwyn gwrthsefyll sylw cwningod, adar a molysgiaid newynog!

Ar y plot cymunedol ei hun mae gwaith wedi bod yn mynd ymlaen i lefelu'r tir o gwmpas y gwelyau tyfu newydd er mwyn wella hygrychedd a hefyd i glirio llefydd eraill sy wedi gordyfu. Mai creu llefydd bywyd gwyllt fydd yn dal lliw a siap trwy'r flwyddyn ydy'r bwriad. Fydden nhw ffynhonnell paill pwysig i bryfaid hefyd.

Yn ddiweddar mi ddes i o hyd cwpl o gymeriadau rhyfedd yn cysgu yn drwm dan lwyn cyrens duon. Diolch i fy mhartner Rachel ac ei merch Georgia, maen nhw wedi cael bywyd newydd ac yn darparu mymryn o steil i'r plot cymunedol.

Os dach chi isio dwad i helpu ar y plot y gwanwyn a'r haf hwn, cysylltwch â mi at keymerjonathan@gmail.com neu 07583 252021. Mi fydd sesiynau gwirfoddoli y cynnwys arweiniad ar arddwyr dibrofiad yn ogystal ag offer hanfodol a lluniaeth.

Os gynnoch chi awydd i gael plot eich hun, er mwyn dderbyn ffurflen cais cysylltwch ag ein ysgrifennydd aelodaeth at beaumarisallotment.society@outlook.com.



Latest news from the Beaumaris allotments

Jon Keymer

2025 is shaping up to be a big year for the community plot as well as the wider Beaumaris Allotment Society. The long awaited financial support from Isle of Anglesey County Council will hopefully include the provision of a polytunnel that will be for the benefit of all allotment holders. It is hoped to have this in place by late spring which will help growers to bring on seedlings in optimal conditions before being planted out in as strong and well protected a condition as

www.seiriolalliance.co.uk/newsletters/

possible to withstand the usual attentions of the avaricious rabbits, birds and molluscs.

On the community plot itself work has been going on to level the ground around the new raised beds thus improving accessibility and, also, to clear other areas that have become overgrown. My aim is to create wildlife areas that will provide year-long colour and shape as well as a valuable pollen source for insects.

Recently I came across a couple of unlikely characters asleep under a blackcurrant bush who, thanks to my partner Rachel and her daughter Georgia and their colourful artwork, have been given new life and are now providing a little touch of class to the community plot.



Cwpl o gymeriadau rhyfedd...
A couple of unlikely characters...
(Jon Keymer)

Anybody wishing to come and help out on the community plot this spring and summer should get in touch with me at keymerjonathan@gmail.com or 07583 252021. Volunteering sessions will feature instruction and guidance for novice gardeners while an array of essential gardening tools plus refreshments will be provided.

Anyone who is keen to have a plot of his/her own can receive an application form by contacting beaumarisallotment.society@outlook.com.

The puffin: a brief life

Andrew Perrott; illustrations © Femke van Gent

This article appeared in **The Puffin** 34, November 2020, page 8.

Our name is **The Puffin**, but we've never written a potted life of our namesake, so here you are. The beautiful illustrations are by Femke van Gent, and show the puffin's life-cycle in five snapshots, from nesting, to fledging, to flying off into the vast unknown. Visit Femke's website, www.femkevangent.art/, to see more of her lovely artwork.

The Common Puffin (*Fratercula arctica*) is one of the most easily recognisable birds of the Atlantic's waters and cliff-tops. It is easily recognised by its interesting coloration and lifestyle, and is found in very large flocks, especially during the warmer months, when it's

puffinpages@gmail.com

time for them to breed. They are compact birds, 28cm-30cm (11"-12") from the tip of the bill to the tail. The wingspan is 47cm-63cm (19"-25"); the males are slightly larger than the females. They stand at about 20cm (8"), and weigh about 500g (17.5 oz).



They have nicknames such as sea parrot and clown of the sea because of the size and shape of their bill and their colourful and comical appearance. Their plumage has a penguin-like colouration: the crown, forehead, nape, wings and tail feathers are a glossy black, with a wide black collar around the neck and throat. On each side of the head there is

a pale grey lozenge-shaped area which tapers to a point and meets behind the neck. The beak is parrot-like, but shorter and tapered, and deep orange in colour. The feet are orange and webbed, and the tail is short and blunt. When in flight, they can flap their wings rapidly, at up to 400 beats per minute, helping them gain a speed of about 88 km/h (55mph).

They have a long life, averaging over 30 years; the minimum lifespan is 20 years and the maximum recorded is 33.8 years. They are found along the North American east coast of the Atlantic, from the Canadian Maritimes south to Maine, and in the coastal areas of northern Europe. Migration takes place during the winter months, when they move far offshore in deep ocean waters.

They are found on rocky coasts during the breeding season, but spend the rest of their lives out on the open ocean. They are members of the auk family, and are very sociable birds. They live together in colonies of up to 2 million individuals, mostly on grassy areas at the top of cliffs, using old or deserted burrows or making new ones.

On the open sea they flock together in large groups, forming 'rafts' to stay protected from predators. They are agile on the wing, but their skills are at their best when in the water: they are excellent swimmers, and can dive to about 60m (200'), holding their breath for up to 2 minutes; an average dive usually lasts for about 20 seconds. They swim by flapping their wings, steering with their feet.

They rest on the sea when not swimming, and have an efficient circulatory system in their feet to help them cope with the cold. In the winter season, they spend most of their time foraging at sea, and go many miles away from land, after which they return to their own cliffs during the summer months for breeding. When they return, they often 'display', with ritualised walking around the entrance of their burrows, knocking their bills together. They thrive on fish and crustaceans, and bring to their nestlings (pufflings) mostly small fish, especially herring, capelin, sand lance, cods, sand eels, etc.

During the mating season, the colours on their bills start to brighten. The mating season begins in the springtime and continues till summer. Once they return to land, the pairs reunite, and some pairs display a mating ritual termed as 'billing'. During billing, they rub their beaks together during or before mating. They use old or deserted burrows, or make new ones, either between the rocks or in the soil. Particular pairs will often return to the same burrow every year. Inside the burrow, the parent birds use seaweeds, grasses and feathers to build a nest, and the female lays a

single egg. Both parents take turns incubating the egg for around 40 days.

Gulls, hawks, eagles and foxes are the most common land predators of adults and the young. Cats and dogs also prey upon them when they are close to human habitation, and rats can also target their eggs. At sea, large gulls and skuas are their common enemies.

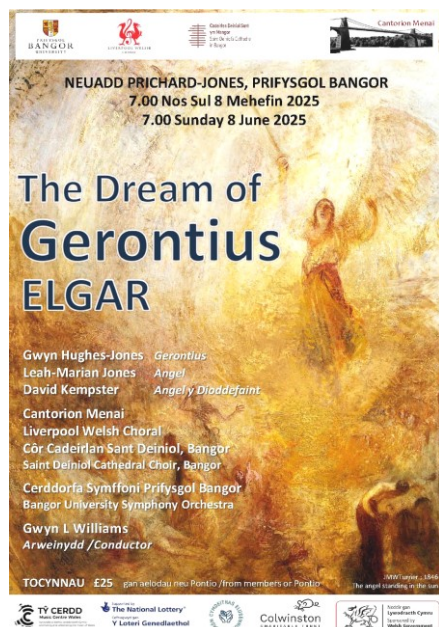
Puffins are protected by the Wildlife and Countryside Act 1981.

Atlantic Puffin
www.animalspot.net/atlantic-puffin.html

Cantorion Menai: The Dream of Gerontius

Steve MacVicar

Bydd Cantorion Menai yn perfformio 'The Dream of Gerontius' gan Elgar ar 8 Mehefin yn Neuadd Prichard-Jones, Prifysgol Bangor.



Mae hwn yn ymrwymiad aruthrol, gyda chymorth grantiau gan sefydliadau gan gynnwys Cymdeithas Elusennol Ynys Môn. Mae'n gydweithrediad â Phrifysgol Bangor. Bydd y côr o 181 o gantorion yn cynnwys Côr Cymry Lerpwl a Chôr Cadeirlan Sant Deiniol, Bangor. Bydd Cerddorfa Prifysgol Bangor yn cynnwys 60 o chwaraewyr.

Mae ein Harweinydd Gwyn L. Williams wedi gwahodd unawdwyr Cymreig bydenwog i ymddangos gyda ni. Maent i gyd wedi perfformio mewn rolau mawr yn rhyngwladol.

Bydd y tenor Gwyn Hughes Jones yn ymddangos fel Gerontius. Brodor ydyw o Lanbedrgoch, lie y magwyd ei ddoniau. Mae'n edrych ymlaen at ymddangos yn yr ardal hon eto wrth iddo drysori a dathlu ei dreftadaeth gerddorol gyfoethog. Mae y Mezzo Soprano Leah Marian Jones yn canu 'The Angel', a'r bariton David Kempster 'The Priest'.

The Puffin 52 • May 2025

Flwyddyn yn ôl, gwahoddwyd Cantorion Menai i ymuno â Chôr Cymry Lerpwl mewn perfformiad o Requiem Verdi yn Eglwys Gadeiriol Lerpwl. Roedd yn noson wefreiddiol o emosiwn uchel a cherddoriaeth hyfryd. Mae 'The Dream of Gerontius' yn addo cyflwyno profiad tebyg a chofiadwy. Mae aelodau Cantorion Menai wedi eu lleoli ar Ynys Môn, yn ymarfer yn wythnosol ym Mhorthaethwy.

Mae'r côr yn perfformio ddwywaith y flwyddyn gyda cherddorfa ac unawdwyr proffesiynol. Mae croeso bob amser i aelodau newydd.

Cantorion Menai: The Dream of Gerontius

Steve MacVicar

Cantorion Menai will be performing Elgar's 'The Dream of Gerontius' on 8 June at Neuadd Prichard Jones Hall in Bangor University.

This is an immense undertaking, aided by grants from organisations including Cymdeithas Elusennol Ynys Môn. It is a collaboration with Bangor University.

The choir of 181 singers will include the Liverpool Welsh Choral and Côr Cadeirlan Sant Deiniol/Saint Deiniol Cathedral Choir, Bangor. The Bangor University Symphony Orchestra will have 60 players.

Our Conductor Gwyn L. Williams has invited world-renowned Welsh soloists to appear with us. They have all performed in major roles internationally. The tenor Gwyn Hughes Jones will appear as Gerontius. He is a native of Llanbedrgoch, where his talents were nurtured. He is looking forward to appearing in this area again as he treasures and celebrates his rich musical heritage. The Mezzo Soprano Leah Marian Jones sings 'The Angel', and baritone David Kempster 'The Priest'.

A year ago, Cantorion Menai were invited to join the Liverpool Welsh Choir in a performance of Verdi's Requiem in Liverpool Cathedral. It was a thrilling night of high emotion and beautiful music. The Dream of Gerontius promises to deliver a similarly memorable experience. Cantorion Menai members are based on Anglesey, rehearsing weekly in Menai Bridge.

The choir performs twice a year with orchestra and professional soloists. New members are always welcome.

Storm Darragh a gwlithod

Lucy Low

Rhagfyr 2024: signalau rhybudd coch, gyda ffonau'n bipio ar draws yr ynys.

Yn ffodus, ychydig iawn o ddifrod a gawsom yn ystod y storm ond mae'r

ardd wedi dioddef yn ystod yr wythnosau dilynol. Wedi eu cyfuno â'r halen yn yr atmosffer, achosodd y gwyntoedd lawer o losgi dail a phlanhigion. Mae pawb yn dal i ddweud wrythaf fod y planhigion yn wydn ac y byddant yn gwella, felly dim ond gêm aros yw hi, i weld beth sy'n digwydd. Er fy mod yn disgwyl fodd bynnag, rwy'n bwriadu bod yn gwbl barod i achub unrhyw un o fy mhlanhigion gwerthfawr rhag difwyno ymhellach, drwy lunio polisi i fynd i'r afael a difrod yn sgil ymosodiad gwlithod. Felly... i wneud hyn o fy nghadair freichiau yn ystod misoedd oer y gaeaf rwyf wedi penderfynu gwneud rhywfaint o ymchwil i'r pethau bach llithrig. "Rhagrybuddio yw rhagarfogi"... "Dylem i gyd ddod i adnabod ein gelyn"...

Mae gwlithod yn rhan bwysig o'n ecosystem, ond...

Rhai ffeithiau "gwlithodol"

- Mae gwlithod yn hermaphroditau, ond nid ydynt yn wrthwynebus i baru, a gallant gynhyrchu dros 30 o wyau sawl gwaith y flwyddyn.
- Gall wllithod fyw am nifer o flynyddoedd.
- Mae gan wllithod synnwyr aroglci aciwt a gallant gynhyrchu llwybr persawrus fel y gallant olrhain eu camau a dod o hyd i'w ffordd adref.
- Gall wllithod ymestyn 20 gwaith hyd eu cyrff.
- Mae gan y gwlithod filoedd o ddannedd microsgopig sy'n tyfu'n gyson, ac yn cael eu hailosod.

Mae dyfyniad addas gan Sun Tzu, Cadfridog ac Athronydd Tsieineaidd Hynafol, yn dweud: "Cadwch eich ffrindiau yn agos a'ch gelynion yn agosach." Rwy'n tyngu'r llinell gyda gwlithod, fodd bynnag, ac mae ymchwil wedi dangos i ni fod yn rhaid symud gwlithod o leiaf 20m i ffwrdd er mwyn iddynt beidio a gallu dod o hyd i'w ffordd adref, felly ni fydd eu taflu dros wal eich gardd yn gweithio, ac efallai yn cynhyrfu'r cymdogion!

Dulliau gwaredu

Wrth iddi nosweithio/wawrio, maent i'w gweld yn hawdd o dan botiau planhigion a dail, neu'n llechu yn y cysgodion yn barod i gnoi eu host neu'n wir, hosta, un o'u hoff fwydydd:

- Ar ôl dod o hyd iddynt, adleolwch nhw i domen gompst, o leiaf 20m i ffwrdd.
- Llenwch eich gardd gyda planhigion sydd ddim yn denu y creaduriaid llithrig, fel mintys, garleg, ffenigl, a mynawyd y bugail (geranium); gweler Gardd Fferm Cefn ar 12 Gorffennaf 2025 (darllenwch fwy am Ddiwrnod Gerddi Agored NGS Llanddona, 12 Gorffennaf 2025, dudalennau 29-31).

www.seiriolalliance.co.uk/newsletters/

- Creu rhwystrau gyda deunyddiau fel gwallt, gwlan defaid, brawd llif, cwrw, tywod, graean, plisgyn wyau, huddyl neu galch, i enwi ond ychydig, ond does dim dweud pa mor nodedig y bydd yr ardd yn arogl wedyn!
- Yn olaf, gellir cyflwyno'r nematode hyfryd, *Phasmarhabditis californica*, i'r pridd, i werthsefyll y gwlithod, ond mae hyn yn gostus, a dim ond am ychydig o wythnosau mae'n para. Mae nematode yn barasit facultative angheuol i gastropodau daearol, gwlithod a malwod.

Roedd fy hen gymydog a mentor garddio a oedd yn byw yn Sir Gaer yn arfer teithio o gwmpas ei gardd ar doriad gwawr a machlud haul gyda siswrn a'u torri'n eu hanner. Nid wyf yn hollol siwr a fyddai'r RSPCA yn edrych yn garedig ar y weithred hon, neu fod gennyf y stumog i'w chyflawni. Mae troed ddamweiniol Wellington yn y lle anghywir yn ddigon drwg.

Felly, i gloi, mae angen i ddihareb Gerard de Malynes (c1585-c1627) "Byw a gadael i fyw" fod yn berthnasol i'm brwydrau garddio!

Edrychwn ymlaen at eich gweld ar 12 Gorfennaf ar gyfer y gwpan arferol o de a darn o gacen!

📖 Slug
<https://en.wikipedia.org/wiki/Slug>

📖 Sun Tzu
https://en.wikipedia.org/wiki/Sun_Tzu

📖 Phasmarhabditis californica
https://en.wikipedia.org/wiki/Phasmarhabditis_californica

📖 Phasmarhabditis californica
https://en.wikipedia.org/wiki/Phasmarhabditis_californica

📖 Gerard de Malynes
https://en.wikipedia.org/wiki/Gerard_de_Malynes

Storm Darragh and slugs

Lucy Low

December 2024: red warning signals with phones beeping across the Island.

Luckily, we had very little damage during the storm but the garden has suffered in the weeks afterwards. Combined with the salt in the atmosphere, the winds caused a lot of burning of leaves and scorching of plants. Everyone keeps telling me that the plants are resilient and will recover, so it's just a waiting game to see what happens. While I wait, however, I intend to be fully prepared to rescue any of my precious plants from further decimation by coming up with a policy to combat damage from slug attack. So... to do this from my armchair in the cold winter months I have decided to carry out some research into the little

puffinpages@gmail.com

slippery things. "Forewarned is forearmed"... "We should all get to know our enemy"...

Slugs are an important part of our ecosystem, but...

Some slugish facts

- Slugs are hermaphrodites but are not averse to mating, and can produce over 30 eggs several times a year.
- A slug can live for several years.
- Slugs have an acute sense of smell and can produce a scented trail so that they can retrace their steps and find their way home.
- Slugs can stretch up to 20 times their own body length.
- Slugs have thousands of microscopic teeth that are constantly growing and being replaced.



Amrywiad brown o'r gwlithod du, *Arion ater*
A brown variant of the black slug, *Arion ater*
(https://en.wikipedia.org/wiki/Black_slug#/media/File:Brown_slug.JPG)

An apt quote from Sun Tzu, an Ancient Chinese General and Philosopher, says: "Keep your friends close and your enemies closer". I draw the line at slugs, however, and research has shown us that slugs must be moved at least 20m away for them not to be able to find their way home, so just hurling them over your garden wall will not work and may upset the neighbours!

Methods of removal

At dusk/dawn they are easily found under plant pots, leaves or lurking in the shadows ready to munch away at their host or, indeed, hosta, one of their favourite foods:

- Once found, relocate them to a compost heap, preferably someone else's, at least 20m away.
- Fill your garden with plants that are disliked by the slippery creatures, such as mint, garlic, fennel and geraniums; see Cefn Farm's garden on 12 July (read more about the Llanddona NGS Open Gardens Day, 12 July 2025, pages 29-31).
- Create barriers with materials such as hair, sheep's wool, sawdust, beer, sand, gravel, eggshells, soot or lime, to name a few, but there's no telling how distinctive your garden might smell afterwards!
- Lastly, the delightful nematode, *Phasmarhabditis californica*, can be

- introduced to the soil to repel the slugs but this is costly and will only last a couple of weeks. This nematode is a lethal facultative parasite of terrestrial gastropods: slugs and snails.

My old neighbour and gardening mentor who lived in Cheshire used to travel around her garden at dawn and dusk with a pair of scissors and snip them in half. I'm not quite sure if the RSPCA would look kindly upon this action or that I could actually stomach carrying it out. An accidental Wellington boot in the wrong place is bad enough.

So, in conclusion, Gerard de Malynes's (c1585-c1627) proverb "Live and let Live" needs to apply to my gardening battles!

Hope to see you on 12 July for the usual cup of tea and piece of cake!

📖 Slug
<https://en.wikipedia.org/wiki/Slug>

📖 Sun Tzu
https://en.wikipedia.org/wiki/Sun_Tzu

📖 Phasmarhabditis californica
https://en.wikipedia.org/wiki/Phasmarhabditis_californica

📖 Phasmarhabditis californica
https://en.wikipedia.org/wiki/Phasmarhabditis_californica

📖 Gerard de Malynes
https://en.wikipedia.org/wiki/Gerard_de_Malynes

The Puffin for children: Ben goes a-boating

John Nunn

Spring had come to the forest and, like so many of the woodland creatures, Simon Squirrel and Ben Badger, were – well, what else but? – full of the joys of spring. After months being cooped up in their homes sheltering from the storms and, in Simon's case, different homes after their tree fell in the depths of winter, the opportunity to get out and play was overwhelming. Tomas, the Tawny Owl, was always a bit worried when the two friends wandered off, having had to come to their rescue on more than one occasion.

"When they wander off, they just forget about 'sensible'," he muttered to himself. "I'd better keep an eye on them."

True to form the two friends charged off into the forest without a single thought about safety. After a while they arrived at a riverbank. Overhanging trees made a sort of bridge across the stream.

"Our very own bridge!" cried Sam. "Look, we can cross over here and explore the forest on the other side. We've never been over there before." "That's all very well for you," said Ben.

"You're a squirrel. Climbing out along branches is what you do. I'm a badger – I don't do branches."

"Oh, come on," said Simon. "Look at it – it's so big it's almost like a path. You can do it easily. Surely you're not scared?"

"Okay," said Ben. "I'll give it a go."

Sam scampered easily across and gave encouraging calls to Ben who carefully inched his way across. Simon was right; the branch was so wide that Ben found it quite easy. He crawled on with more and more confidence, but suddenly there was a very loud *ccrracckk*, followed by an enormous splash. Simon and Ben had forgotten one important fact: badgers are quite a lot heavier than squirrels and the branch which had been quite safe for Simon couldn't take Ben's weight.



Fortunately for Ben the branch hadn't rolled over; it provided him with a sort of boat on which to float down the stream.

"Help!" he shrieked. "I'm being carried away. I can't swim – there's not a lot of call for swimming down in our underground setts (a badger's burrow is called a sett, sometimes spelt "sete"). Do something!"

Simon was in a real panic, running back and forth along the bank, shouting "help" at the top of his voice. Meanwhile, Ben could hear the roar of water; the stream was getting faster as it neared a small waterfall. It might have been a small one but it was quite big enough to tip Ben into the water... and Ben couldn't swim!

Luckily for the two friends Tomas had taken his self-appointed duties seriously and had seen the whole thing. He was an owl who knew folk. Many of the creatures of the woodland had reason to be grateful to Tomas who had often rescued them, or organised their rescue, from sticky situations.

Back on the river Ben was amazed to see a wet snout appear over the side of his branch boat.

"Don't worry," said a voice. "We'll soon have you safe on the bank, and on the right side, too." Ben could see that his branch was no longer floating with the stream but heading over to the bank. Two wet snouts were pulling and

pushing the branch from in front and behind. Eventually Ben was able to scramble ashore where he found Tomas gazing at him and tut-tutting quite loudly.

"Dear, oh dear, oh me," he said. "When will you two ever learn to think before you do some of these silly things?" Simon was an honest little squirrel; he'd easily crossed back from the other side of the river using much flatter branches. "It was my fault, Tomas," he said. "I sort of made him do it."

"Yes, you did," said Tomas. "But Ben should have had the courage to say 'no'." "I'm really sorry," said Simon. "I'll never do anything like that again, I promise." "That's a promise you need to keep," said Tomas. "In the meantime you'd better say 'thank you' to your rescuers. These are two very good friends of mine: Beti and Boris Beaver." The two friends thanked the beavers who offered to teach them to swim when the water got warmer later in the summer. It was two subdued but wiser pals who returned to face the anger of their parents.

But... have Ben and Simon learnt their lesson? Well, we'll see when we catch up with their summer activities in the next number of *The Puffin*.

• • • • •

The Royal National Lifeboat Institution and Anglesey: part 8
Andrew Perrott

After a long gap we move on now from the late 1960s to the end of the 20th century.

♦ ♦ ♦

Bronze, Silver and Gold: former Humber Coxswain, Brian Bevan MBE, is the only RNLI crew member to receive Bronze, Silver and Gold Medals for Gallantry at the same awards ceremony. Coxswain Bevan and his crew launched to three medal rescues in just seven weeks.



Former Humber Coxswain Brian Bevan in 1977 (RNLI)

His first award was received for his part in rescuing six people from the Dutch coaster *Diana V*, 74 miles east of Spurn Point, on the night of 30-31 December 1978.

In storm force winds and temperatures of -4°C, sea water was freezing on the deck of the lifeboat. The Arun class lifeboat, *City of Bradford IV*, made three runs in, being thrown against the heavily

listing coaster before the crew rescued a 12-year-old girl, a woman and four men. The lifeboat escorted the damaged vessel into the River Humber and by the time she returned to her moorings had been at sea for 13 hours.

The Gold Medal was awarded for Coxswain Bevan's outstanding courage when rescuing the crew of a Panamanian motor vessel, *Revi*, in the early hours of 14 February 1979. The *Revi* was in danger of sinking 30 miles north of Spurn Point. When the lifeboat arrived she was being completely swamped by heavy seas in storm force 10 conditions. After several attempts, two crew were rescued, leaving the captain and mate onboard. After a dozen more attempts, the lifeboat was brought alongside and the mate managed to jump 2m onto the lifeboat. The captain was left hanging onto the *Revi*'s stern rails waiting to jump. After several more approaches by the lifeboat, the *Revi* was swamped and her captain feared lost.

Just 24 hours after his last rescue, Coxswain Bevan and his crew launched again, to spend over 17 hours at sea in storm force winds and blizzards. They joined the Wells lifeboat crew on a service to the Romanian cargo ship *Savinesti* with 28 people on board. The ship had suffered engine failure 37 miles from Spurn Point and was in danger of running aground. The snow meant that visibility was very poor, and there was a thick layer of ice on the lifeboat. Wells lifeboat, a smaller open Oakley class boat, stood by in violent seas for two hours until the Humber lifeboat arrived to escort *Savinesti* to the safety of the Humber River.

For this service, Coxswain Bevan received a Bronze Medal and Wells's Coxswain David Cox received a Silver Medal.

The Penlee lifeboat disaster: on 19 December 1981, the crew of the Penlee



Penlee's lifeboat *Solomon Browne* in 1973 (RNLI; photo Nigel De Wallens)

lifeboat *Solomon Browne* were lost attempting to rescue the crew and passengers onboard a stricken coaster, the *Union Star*, which was on her maiden voyage, sailing from the Netherlands to Ireland with a cargo of agricultural fertiliser.

On that stormy December evening, the

Solomon Browne battled heavy seas and hurricane force winds to reach the *Union Star*, which was being swept towards the coast of Cornwall. After several attempts to get alongside the coaster, the lifeboat crew rescued four of the eight people onboard. But rather than turn back to shore, they made a final heroic rescue attempt, and all radio contact was lost.

The Falmouth Coastguard received a call from the *Union Star*: her engines had failed and would not restart. The rough seas and powerful winds were blowing her towards the treacherous Cornish coastline. In Mousehole, word spread that the lifeboat might be needed, and Penlee's *Solomon Browne* was put on standby.

A dozen men answered the call for crew, but only eight were needed. A rescue under such severe conditions would be difficult, and Coxswain William Trevelyan Richards chose the best crew for the task.

The *Union Star's* fuel system had become contaminated with water, making an engine restart impossible. The coaster was drifting dangerously close to the shore, so the Coastguard called in an RNAS Sea King helicopter to rescue the crew. The coaster was rolling and pitching on the wild seas, so violently that her mast threatened to collide with the helicopter overhead. The aircrew decided it had become too dangerous to continue the rescue mission; the *Union Star's* mast was too close and their line wasn't long enough to reach the deck from further away. The coaster had drifted to just two miles from the coastline, so the *Solomon Browne* was finally launched, two hours after the first alert.

The helicopter stood by as Penlee's lifeboat, a wooden Watson class boat, launched in the hurricane force 12 wind, fighting against 90-knot winds and 18m waves.

The powerless *Union Star* had already lost one anchor, but was desperately trying to hold her position as the *Solomon Browne* fought the harsh breaking seas to come alongside it. She struck against the side of the coaster and the lifeboat crew stood against the railings, throwing lines across to the coaster. The lifeboat battled to come alongside the coaster for half an hour.

From the helicopter, Lieutenant Commander Russell Smith saw dark shadows of people in fluorescent orange lifejackets run across the deck from the wheelhouse to the lifeboat, where the crew were waiting to catch them as they jumped.

The *Solomon Browne* radioed back to the Coastguard that they had rescued four people, and the helicopter turned

puffinpages@gmail.com

back to base, assuming the lifeboat would head to shore, but she decided to make a final rescue attempt, and that was when radio contact was lost. The Coastguard radioed back to the lifeboat, but there was no response. Ten minutes later, the lights of the *Solomon Browne* disappeared.

The helicopter refuelled and launched once more. Lifeboats from Sennen Cove, the Lizard, and St Mary's were also sent to help their colleagues, but their searches were unsuccessful. At daybreak, the *Union Star* was found capsized on the rocks by Tater Du Lighthouse and wreck debris from the lifeboat began to be washed ashore. This disaster was the last time the RNLI lost an entire crew in action; it happened just days after St Peter Port's lifeboat volunteers braved similar hurricane conditions to rescue 29 people from the cargo ship *Bonita*.

Coxswain Trevelyan Richards was posthumously awarded the RNLI's Gold Medal for Gallantry, and the rest of the crew were awarded Bronze Medals. The names of the eight Penlee crew members who valiantly fought to save those onboard the *Union Star* are inscribed on the RNLI Memorial in Poole.

The disaster inspired a public appeal for the village of Mousehole, which raised over £3 million, the equivalent of £10 million by today's standards. Every year, on 19 December, the Christmas lights at Mousehole are dimmed between 8.00pm and 9.00pm in memory of the 16 people who lost their lives, leaving just the Cross and Angels shining down across the village and out to sea.



The Cross and Angels at Mousehole shining across the village and out to sea in memory of the lives lost in the Penlee lifeboat disaster in 1981 (RNLI)

The Tyne class lifeboat: twice as fast as the motor lifeboats she was designed to replace, Tyne class lifeboats were introduced in 1982. They were the first fast slipway boats, and could be launched from existing lifeboat slipways or lie afloat in shallow waters. The name Tyne was chosen because ex-Coxswain at Tynemouth, Paulin Denham Christie, was a big part of the fast slipway boat project.

They were developed from a design by the National Maritime Institute, and have a compact superstructure, their steel hull and fully-protected propellers taking into

account the stresses and strains of slipway launching. Features include a low-profile wheelhouse and a separate cabin behind the upper steering position.

City of London entered service at Selsey in November 1983, the start of more than 30 years of Tyne class lifeboats at the station. FBM Marine at Cowes in the Isle of Wight built 40 Tyne class lifeboats. Production ended in 1990, and the much-loved Tyne class lifeboats are being gradually replaced by the new Tamar class lifeboat.

The Mersey class lifeboat: the Mersey class lifeboats are lightweight sea-going boats designed to be launched from the beach. Capable of 17.5 knots, they are



Swanage's Mersey class lifeboat, *Robert Charles Brown*, in 2014 (RNLI, photo Rob Inett)

all-weather lifeboats capable also of operating off a slipway or lying afloat. First launched from Hastings Beach in July 1988, the aluminium-hulled Mersey (later changed to fibre-reinforced plastic) is inherently self-righting. The propellers and rudders lie in partial tunnels set into the hull. These provide protection from damage in shallow water or slipway operations, along with the main and two bilge keels. The mast and aerials can be collapsed to fit into a boathouse. 37 Mersey lifeboats were built between 1988 and 1994. Popular with her crews, the Mersey was the final piece of the jigsaw in our plan to complete the introduction of fast lifeboats by 1993.

The next-generation Shannon class of all-weather lifeboats is gradually replacing the Mersey class, providing the RNLI with an all-weather lifeboat fleet capable of 25 knots.

The Trent class lifeboat: built to provide the quickest possible response



Dun Laoghaire RNLI's Trent class lifeboat, *Anna Livia* (RNLI, photo Nicholas Leach)

service, and travel further out to sea than any of its predecessors, the 25-knot Trent class lifeboats joined the RNLI's fleet in 1994. These all-weather adaptations of the Severn class

(designed at the same time) are now used at lifeboat stations around the UK and Ireland and can provide a rescue service up to 50 miles out to sea.

Efficiency and speed: the need for higher speeds and more rapid responses had been proven time and time again, and the RNLI had set itself the goal of replacing all traditional lifeboats with new, fast designs by 1993, when many of the early Waveney and Aruns would be due for replacement.

The Trent class's first active service was at Alderney lifeboat station and, since then, many notable rescues have been conducted by crews using the boat, including the rescue of a female dolphin stranded in the River Tay, Perth.

The Safety at Sea initiative: in 1995, sea safety bodies and marine industries joined forces with the RNLI to ensure that prevention messages reached those most in danger at sea. There was a growing realisation that prevention would be better than cure.

The organisation's wealth of experience and knowledge could surely be of help in promoting safety at sea and preventing accidents before they happened. With that aim in mind, 1994 saw the appointment of the first RNLI Sea Safety Officer to oversee the institution's role in preventative work. It was a year later, in 1995, that a more high profile campaign got underway.

The man chosen for the new Sea Safety Officer role was Michael Vlasto, an experienced ex-merchant navy officer who had already served for 19 years with the RNLI, first as Divisional Inspector of Lifeboats in Scotland, Wales and the North West, and then as a Training Officer.

With an average of about 100 lives being lost at sea each year through swimming, boating, watersports and other coastal leisure activities, Michael knew that he couldn't tackle everything at once and chose to start with pleasure boats. His first step was to explore links with other bodies and form a loose-knit coalition and then, finally, a more formal group.

By the end of 1994 this group was a reality, bringing together a multitude of talents under the umbrella title of the Sea Safety Liaison Working Group, which saw involvement from the Coastguard Agency, the Royal Yachting Association (RYA), the Marine Safety Agency, the Royal Life Saving Society (RLSS) and the British Marine Industries Federation.

In addition to this formidable array, close links began to be forged with other bodies with a vested interest in sea safety, including fishermen's federations, diving organisations and other watersports governing bodies.

The first outside signs of this link-up was the 1995 London International Boat Show when the first booklet, *Safety Guidelines for Recreational Boat Users*, was launched.

This publication had been funded by the new coalition of sea safety groups, and was soon followed by three further booklets providing guidelines to reduce machinery failure. These were aimed at pleasure craft, diving support craft and fishing vessels and were in response to statistics showing that machinery failure was the main cause of call-outs.

The Severn class lifeboat: in the late 1980s, the RNLI realised that its fleet needed upgrading in order to increase the number of lives saved at sea.



Buckie's Severn class lifeboat, the *William Blannin*, out on exercise (RNLI, photo Nicholas Leach)

The Arun class and Waveney class lifeboats provided a 48km coverage with operating speeds of up to 18 knots.

By ensuring an all-weather fleet capable of 25 knots, however, the RNLI knew that it could reach those in trouble further out to sea more quickly; for those in trouble at sea, seconds can make the difference between life or death.

The RNLI launched the prototype Severn class lifeboat, the *Peter and Marion Fulton*, in 1991, and tested her rigorously for several years, and when the design and testing teams were happy that the 25-knot lifeboat class was fit to save lives and keep the crews as safe as possible, it was released into the fleet. *Margaret Joan and Fred Nye* 17-46 was the last Severn class lifeboat to be built, and entered the relief fleet in 2004.

📖 Our history
<https://rnli.org/about-us/our-history>

💰 Make a donation
<https://rnli.org/support-us/give-money/>



• • • • •
The RNLI: lifesaving data 2024, a rescue story and the Mayday Mile
John Pulford, Lifeboat Press Officer

Lives saved

New data reveal that the RNLI in Wales saved 53 lives in 2024.

The RNLI charity's volunteers provide a 24-hour search and rescue service around the coasts of the United Kingdom and Ireland. It operates over 238 lifeboat stations in the UK and Ireland and, in a normal year, more than 240 lifeguard units on beaches around the UK and Channel Islands.

The RNLI is independent of Coastguard and government and depends on voluntary donations and legacies to maintain its rescue service. Since it was founded in 1824, its lifeboat crews and lifeguards have saved over 146,000 lives.

The RNLI's lifeboats were launched over 9,100 times in 2024, making it the fourth-busiest year in the charity's 201-year history. Welsh RNLI lifeboat stations' total number of launches decreased from 2023, however the number of lives saved rose from 38 in 2023 to 53 in 2024.

A rescue story

Emily Morus-Jones, was one of those rescued by RNLI volunteers last year, on 2 September.

"The Beaumaris RNLI crew members took really good care of me when I broke my knee whilst cooling down from a run with my dogs on the beach."

Emily was on the shore near the Faenol Estate with her dog Llawes. She skidded on some seaweed and fell awkwardly onto my knee. She became concerned about how/if she'd be located; the tide was coming in.



(above) Emily and Llawes with the Beaumaris RNLI crew members who rescued her, and (below) being interviewed by BBC Wales



There's little by way of beach, and none when the tide comes in. The area is one of very fast-moving water with a lot of rip currents. Luckily she had her mobile

phone with her and was able to call for help.

"It's pretty good that, if you're freezing cold and in agony on the side of a beach by yourself, volunteers will turn up in a lifeboat and take you to safety," Emily remembers thinking when the RNLI lifeboat arrived. "I'm so glad the RNLI is a thing we all have because the alternative of being alone, injured and with no chance of anyone coming to save you is utterly terrifying."

Mayday Mile

The RNLI is putting out its own 'Mayday' call, urging the public to get involved with its biggest national fundraising event, the Mayday Mile.

Participants are challenged to cover a mile a day for the month of May, with every penny raised helping to make sure that the charity's lifesavers have everything they need to keep people safe this summer and beyond.

Running a 24/7 lifesaving service is expensive and costs are rising: in 2023, it cost over £190 million to run the RNLI.

■ All I could do was scream, says woman rescued by RNLI
www.bbc.co.uk/news/articles/cg5q7dpzrzjo

■ RNLI Mayday Mile: Complete a mile a day in May and help RNLI volunteers save lives this summer
<https://fundraise.rnli.org/event/mayday-mile/home>



Lifeboats

Charles Arnold and the 3-pin 13amp plug and socket

Mavis Bishop

Do you tune into the BBC's *Antiques Roadshow* like I do? Well, the show on 8 December 2024 was recorded in Beaumaris Castle, and I was a little intrigued to see if anyone I knew was on television, and to learn about the "hidden treasures" held on the Island.

You can imagine my surprise when who popped up but Caroline Tebbutt, who lives just up the lane from me, proudly holding a bronze bust of her grandfather, Charles Leonard Arnold.

Caroline has many fond memories of her grandfather, but to the wider community he is best remembered as the inventor of the 3-pin electric safety plug, and as the founder of MK Electrics. Thanks to Caroline, here's his story.

Charles Arnold was born on 10 February 1885 in Peckham. He had nine siblings and was educated at Alleyne's School. In 1904 he joined Marconi in Liverpool, but was dismissed for experimenting

with a colleague on home-made transmitting and receiving equipment at their lodgings; they managed to get better results than Marconi! Undeterred, Arnold wrote to Lloyd's of London describing his experiments, and they employed him in their wireless division erecting stations at the Lizard, Malin Head, the Isle of Wight and Suez. Subsequently he moved to Crompton's in Chelmsford as a third-year apprentice, and it was here that he shared lodgings with Charles Reginald Belling.



A sculpture of Charles Arnold by Barbara Tribe FRBS
(Mavis Bishop)

The plaque reads:

Charles Leonard Arnold M.I.E.E
Founder Of MK Electric Ltd
Inventor Of The Three Pin Safety Plug
Barbara Tribe F.R.B.S

In 1912 Arnold and Belling formed Belling & Co Ltd to make electric fires, with Belling, Arnold and a third person putting in £150 each. Arnold enlisted in 1914, and sold his interest in the company to Belling.

After the Great War Belling told Arnold about his need for switches and sockets for the fires that he made, and Arnold set up the Heavy Current Electric Accessories Co with Belling. The first factory was in Park Road, Edmonton, with a total workforce of three, making switch bases from ex army rifle butts. The company was based on the *Multy Kontakt* socket, patented by Arnold in April 1919. The company was eventually named MK Electric after that one product.

The Company expanded rapidly and in December 1926 Arnold became a founder member and Director of Insulators Ltd, where women were employed for the first time.

In 1932 MK was the first firm to pay its shopfloor workers during holidays; office staff already enjoyed this benefit. In 1933 Arnold became a Director of Knightshades Ltd of London, electric light-fitting manufacturers. This company was independent of MK. By 1939 MK had

become the UK's top name in plugs and sockets, and during the Second World War it was believed that every allied aircraft had some item of MK equipment on board. Production for the war effort was six times of that before the war.

From 1946, during the post-war rebuilding, the new rectangular 3-pin plug and socket became standard fittings and were used throughout schools, hospitals, offices and factories and, of course, in the home. This largely remains the case today. By now MK employed 4,000 people and had a catalogue of over 1,000 items.

Belling died in 1965, and in 1968 Arnold retired from the Chairmanship of MK Electrics but remained its President.

Today, the 3-pin electric safety plug which Arnold patented is in use worldwide and MK remains a market leader in producing electrical accessories. Belling continues to produce cookers and electric fires. Arnold died in 1969 at the age of 84, leaving behind his legacy, the 3-pin electric safety plug which is still used worldwide. After his death at least 10 other items that he had patented were discovered.

At her home in Llanddona Caroline Tebbutt displays the bust of her grandfather which was sculpted by Barbara Tribe in 1966. It holds many happy memories of him and of what he was able to achieve.

■ Grace's Guide To British Industrial History: Charles Arnold
www.gracesguide.co.uk/Charles_Arnold

■ MK Electric
https://en.wikipedia.org/wiki/MK_Electric

Letters

Here's a lovely letter that we received in February about **The Puffin**, Tilly and her friend Robbie.

Thank you for the excellent 'Puffin 51' in which I read reflections on Tilly and Robbie and an introduction to dear little Lucy, whom I'm itching to meet.

I know quite a few people who have fallen in love with Lucy already. Please pass on my best wishes to Edie in her new role as dogtator for **'The Puffin'**.

My donation is in memory of Tilly and Robbie and a welcome for Lucy.

Sheila Driver
Beaumaris

I read the letter to Edie and Lucy; Edie joins **The Puffin's** Editorial Team in saying a big 'thank you'. Little Lucy of the Sharp Teeth just looked down her nose at me while chewing one of her many toys...

Tailpiece: a Waggy Westie takes the helm (with some interference from Little Lucy of the Sharp Teeth)...

Edie Barkser-Lott (dogtated to Andrew Perrott by e-mail and telephone)

My new Dogtation Boss (he thinks so, anyway) came to visit in March and at Easter. He didn't have to say the word *dogtation*; I couldn't wait! In fact, I barked so much stuff at him that he had to tell me (the Boss: I had to shout at her) not to be so barky.

In February I met Little Lucy of the Sharp Teeth for a second time. My goodness, she was so bouncy! I tried ignoring her. It didn't work. I tried growling at her. That didn't work, either. She was *there*, no matter where I moved.



I don't know how they managed to make Little Lucy sit still... she looks so 'butter wouldn't melt in my mouth'...

The people even made us sit together for a photo. If I'd known what I'd have to put up with as part of this dogtating lark (that's what Tilly used to call it) I think



Little Lucy was *there*, everywhere I moved, dogtating stuff at me...

that I'd have said, "No way, José", but I'm a big girl, so I shall grin and bear it...

Little Lucy did nothing but talk *at* me. I think that her Boss had been daft

enough to tell her that I'd taken over my bezzie Tilly's role as Dogtator... well, she went on about *this* and about *that* and, oh, my poor head!



...so I had to tell her that she's far too young and I'm the Dogtator, so there. Would she listen? No...

She seemed to think that she could do my job, even though she's still wet behind the ears!... and I'm still learning, even though I have a brain the size of a planet.



I like to lie in the sun when I think about what I'm going to dogtate... I log on quickly and make a trunk call when the inspiration take me... (Nicola McDonough)



Little Lucy's Boss tells me that she doesn't think much of The Sea; so far she's done no more than dip her front paws and snout into the water. I don't think much of it, either... it's so, well, *wet*.



Of course, there are some mornings when the inspiration simply doesn't take me. 'Can I be bovvered?' I think, and the answer's usually 'no'... (Nicola McDonough)



Little Lucy's Boss tells me that her batteries run down occasionally as well; that probably means that she's thinking up more stuff to dogtate at me!

Little Lucy seems to be becoming something of a hunter and gatherer. Her Boss told me that she deposited a rat (dead, you understand, but *fresh*) on his living-room floor when he was in London a few weeks ago (he was not pleased), and she did it again just before Easter, another freshly-dead rat, on the lawn this time. She was very pleased... She's taken to digging holes in the garden as well, which isn't going down well.



'Who? Me?'

I'll have a lot more to tell you next time... for now, though, it's 'Goodbye!'...

Some local Facebook community links

- Anglesey Community Noticeboard/Hysbysfwrdd Cymunedol Môn
www.facebook.com/groups/205528177434085/
- Friends of Beaumaris
www.facebook.com/groups/521368261344315/
- Beaumaris Community Activities and Information/Gweithgareddau Biwmares
www.facebook.com/groups/400365856820659/
- Ffrindiau Cwlwm Seiriol Friends
www.facebook.com/groups/395263584239092/
- Cymuned Llanddona Community
www.facebook.com/groups/llanddona/
- Cymuned Llandegfan Community
www.facebook.com/groups/1518554195120520/
- Ffrindiau Llangoed
www.facebook.com/groups/1458577214379355/
- Cymuned Llangoed Community
www.facebook.com/groups/Llangoed/
- Pobol Llansadwrn People
www.facebook.com/groups/3140572646162274/
- Hysbysfwrdd Seiriol Noticeboard
www.facebook.com/groups/1600203890233039/

ADVERTISE IN The Puffin

- **IT'S FREE!**

The Puffin is a free quarterly community magazine, published by a small group of volunteers. Its production costs are funded entirely by sponsors, advertisers, fundraising, grants and donations. It's published in February, May, August and November.

- **IT'S LOCAL!**

The Puffin has wide local coverage, and serves the 'pretty pointy piece' of eastern Anglesey which comprises Seiriol Ward and the communities of Beaumaris, Glanrafon, Llanddona, Llandegfan, Llanfaes, Llangoed, Llansadwrn and Penmon.

- **IT'S INTERESTING AND INFORMATIVE!**

The Puffin features a broad variety of articles, including local interest, nature and matters of importance such as the cost of living. There's also a regular *What's happening where?* listing that gives information about local services, societies, and events, regular and one-off.

- **IT'S AVAILABLE IN PRINT AND ON-LINE!**

The Puffin is a high-quality colour publication which provides a great opportunity for local businesses to raise their profile and advertise their services to the local community.

It's available in print at outlets in Beaumaris, Llanddona, Llandegfan, Llangoed and Penmon, and on-line at www.seiriolalliance.co.uk/newsletters/.

- **MORE INFORMATION?**

If you would like more information, or are interested in placing an advertisement, call **Richard Adams** on **07710 233439** or e-mail **The Puffin** at puffinpages@gmail.com.

Advertising charges range from £12 for a small ad to £120 for a full page; pricing is by size. We're happy to negotiate on variations of size, repeat advertisements or any other requirements that you may have.

Please note that sizes may be approximate as they depend on text layout. We can design an advertisement for you if you'd like us to do so.

- **SMALL ADS!**

How about placing a small ad in **The Puffin**? Ask us for more details.



Editorial information and other 'useful to know' stuff

The Editorial Team

Richard Adams	John Nunn
Mavis Bishop	Andrew Perrott
Paul Bishop	Owen Williams
John Briggs	✉ puffinpages@gmail.com

Editorial Policy

- **The Puffin** is a community journal. It does not become involved in matters such as politics, local or national, but is intended to be a means of bringing people and communities together, celebrating our 'sense of community' and the beautiful part of the world in which we live, so please be kind, courteous and respectful. 'Hot' topics related to the local context are fine, but we ask that people respect the fact that alternative views may be valid as well.
- We welcome news, letters and interesting articles, in Welsh and in English, as long as they are attributed to an author; please don't send us anything marked 'not for publication'.
- The views expressed in **The Puffin** do not necessarily represent those of the Editorial Team.
- We review all items for material that is obviously libellous or offensive, but we cannot check for factual accuracy because we might not be sufficiently expert on the topic, and because of time constraints.
- If you have strong feelings about what is said, or is not said, in **The Puffin**, don't bottle it up: get in touch with us or join the group of volunteers who form the Editorial Team who enable its production.

General information and publication dates

- We will do our best to reply to your e-mails quickly.
- If you e-mail photographs and other pictures to us for inclusion in **The Puffin**, please send them in .jpg format if possible. If you send photographs or documents to us by post, be sure to enclose a stamped, self-addressed envelope so that we can return them to you after they've been scanned.
- The word count per column is c.350 (three-column page) and c.520 (two-column page).
- **The Puffin** is published in:
February: submissions **must** be in by 1 January
May: submissions **must** be in by 1 April
August: submissions **must** be in by 1 July
November: submissions **must** be in by 1 October

Submissions and donations by post

- We are happy to receive submissions – and donations, of course! – by post. Please send them to:
 Andrew Perrott
 Glangors
 Llanddona
 Anglesey
 LL58 8TU
 Mark the envelope **The Puffin** and enclose your address, an e-mail address and/or telephone number so that we can let you have an acknowledgement and a 'thank you'.
- If you would like to make a donation by bank transfer, our details are:
 Bank: **NatWest**
 Account name: **The Puffin**
 Account number: **88609782**
 Sort code **54-10-01**

Sponsorship and advertising

- Please contact us by e-mail if you would like to sponsor **The Puffin** or place an advertisement in it.

Where to pick up your copy of The Puffin

- **Beaumaris**
 ABC Service Station, Gallows Point, LL58 8YH
 Canolfan Hamdden Beaumaris, Rating Row, LL58 8AL
 Central Bakery, 22 Margaret Street, LL58 8DN
 Ena's Newsagents, 24 Castle Street, LL58 8AP
 Spar, 11 Castle Street, LL58 8AB
 Town Hall (entrance lobby), Castle Street, LL58 8AP
- **Llanddona**
 Yr Owain Glyndŵr, LL58 8UF
 Wern y Wylan, LL58 8TR (at Wern y Wylan Court)
 Neuadd Bentref Llanddona Village Hall, LL58 8TS
- **Llandegfan**
 Siop Llandêg, Lon Ganol, LL59 5UA
- **Llangoed**
 Morrisons Daily, China House, LL58 8NW
 Neuadd Bentref Llangoed Village Hall, LL58 8NY
- **Penmon**
 The Pilot House Café, Black Point, LL58 8RR

On-line

www.seiriolalliance.co.uk/newsletters/

Some useful contacts

Alcoholics Anonymous	0800 917 7650
Canolfan Iechyd Beaumaris Health Centre	01248 810818
Canolfan Hamdden Beaumaris	01248 811200
Cynllun Tro Da Seiriol Good Turn Scheme	01248 305014
Dŵr Cymru/Welsh Water:	leaks
water services and emergencies	0800 281 432
sewerage services and emergencies	0800 052 0130
Electricity (SP Energy Networks):	information about power cuts
	0800 001 5400
Floodline	0345 988 1188
Gas:	National Gas Emergency Service
	0800 111 999
Isle of Anglesey County Council:	
	Beaumaris library
	01248 750057
	Children's Services
	01248 810659
	missed waste collections
	01248 752722
	01248 752860
NHS (NHS Direct closed in 2014):	
	for non-emergency medical help
	111
NSPCC:	
	help for adults concerned about a child
	0808 800 5000
	help for children and young people
	0800 1111
Police: non-emergency	101
PCSO: Caitlin McGonigle	07989 159178
PCSO: Dave Webster	07989 159457
Post Office:	customer helpline
	Morrisons Daily, Llangoed
	0345 611 2970
	Spar, Beaumaris
	01248 490056
	01248 810326
RSPCA:	daily, 9.00am-6.00pm
	07490 642555
Samaritans:	English language
	116123
	Welsh language
	0808 164 0123
Ysbyty Gwynedd Hospital	01248 384384

LLANDDONA OPEN GARDENS

SATURDAY 12 JULY 2025

The numbers **1** to **9** below correspond with the numbers in the map overleaf

1 Tyddyn Bach Llanddona LL58 8UN	<ul style="list-style-type: none"> • Smallholding; Jacob sheep; chickens; working ceramic studio; pots for sale; views over Llanddona Beach and Red Wharf Bay; greenhouse with raised vegetable/herb beds; orchard; beehives • Dogs welcome on lead; toilet facilities; garden is largely wheelchair-friendly • Good parking facilities
2 Capel Peniel War Memorial Llanddona LL58 8TU	<ul style="list-style-type: none"> • Public access at any time • Colourful pots and borders with a bench for quiet reflection • Limited parking facilities
3 Tŷ Capel Peniel Llanddona LL58 8TU	<ul style="list-style-type: none"> • Work starting on a long-neglected garden; views across Anglesey towards Snowdonia • Wooded area at rear; some interesting old architectural features • Work being undertaken to Chapel; please note that the Chapel will not be open to the public • Dogs welcome on lead
4 Glangors Llanddona LL58 8TU	<ul style="list-style-type: none"> • Work in progress on a recently restored garden; views across Anglesey towards Holyhead; wildlife area • Dogs welcome on lead; toilet facilities • Plant sales
5 Pen-y-Gorllewin Llanddona LL58 8TU	<ul style="list-style-type: none"> • Colourful garden making extensive use of pots; raised beds; greenhouse • Dogs welcome on lead • Wheelchair access
6 Y Gilfach Llanddona LL58 8TS	<ul style="list-style-type: none"> • Colourful 'hidden' cottage garden making extensive use of pots; views of Snowdonia • Dogs welcome on lead • Wheelchair access
7 Neuadd Bentref Llanddona Village Hall Llanddona LL58 8TS	<ul style="list-style-type: none"> • Pleasant raised flower beds at entrance • Outdoor fitness area • Large mural featuring Llanddona • Refreshments available; dogs welcome on lead • Fully accessible disabled toilets; baby changing facilities
8 Cefn Farm Llangoed LL58 8PW	<ul style="list-style-type: none"> • Working farm; walled cottage garden featuring stones from the original Penmon Priory; views over the Menai Strait • Dogs welcome on lead; toilet facilities; refreshments available • Plant sales; gardening books/plant books for sale; eggs and seasonal vegetables for sale • Wheelchair access <i>with care</i>; some cobbles and gravel • Limited parking facilities
9 Bryn Rhedyn Llangoed LL58 8PW	<ul style="list-style-type: none"> • Interesting garden with small orchard; greenhouse; views over the Menai Strait; picnic area • Dogs welcome on lead • Wheelchair access <i>with care</i>

LLANDDONA OPEN GARDENS - SATURDAY 12 JULY 2025

