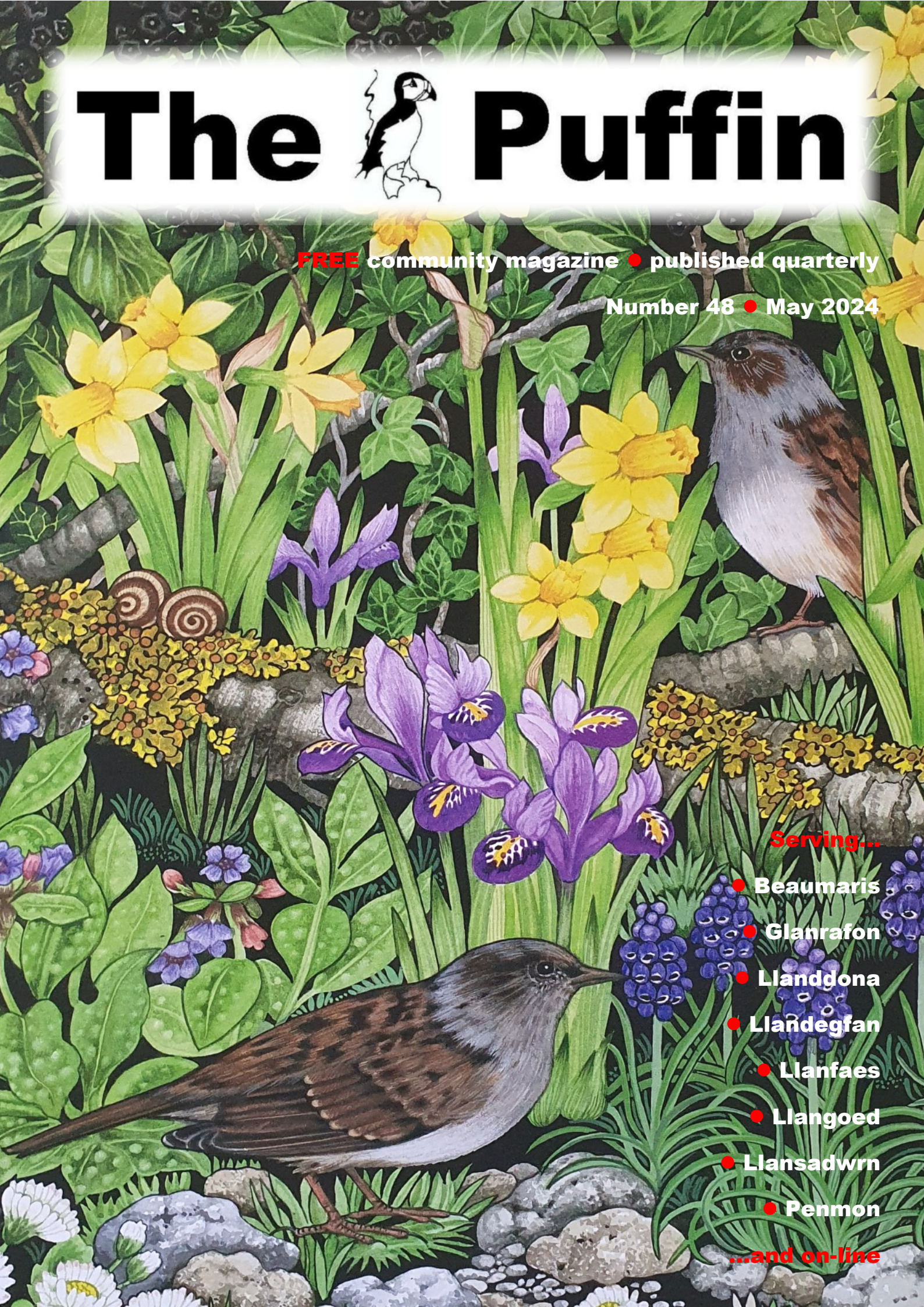


The Puffin



FREE community magazine • published quarterly

Number 48 • May 2024



Serving...

- Beaumaris
- Glanrafon
- Llandgona
- Llandegfan
- Llanfaes
- Llangoed
- Llansadwrn
- Penmon

...and on-line

ADVERTISE IN The Puffin

- **IT'S FREE!**

The Puffin is a free quarterly community magazine, published by a small group of volunteers. Its production costs are funded entirely by sponsors, advertisers, fundraising, grants and donations. It's published in February, May, August and November.

- **IT'S LOCAL!**

The Puffin has wide local coverage, and serves the 'pretty pointy piece' of eastern Anglesey which comprises Seiriol Ward and the communities of Beaumaris, Glanrafon, Llanddona, Llandegfan, Llanfaes, Llangoed, Llansadwrn and Penmon.

- **IT'S INTERESTING AND INFORMATIVE!**

The Puffin features a broad variety of articles, including local interest, nature and matters of importance such as the cost of living. There's also a regular *What's happening where?* listing that gives information about local services, societies, and events, regular and one-off.

- **IT'S AVAILABLE IN PRINT AND ON-LINE!**

The Puffin is a high-quality colour publication which provides a great opportunity for local businesses to raise their profile and advertise their services to the local community.

It's available in print at outlets in Beaumaris, Llanddona, Llandegfan, Llangoed and Penmon, and on-line at www.seiriolalliance.co.uk/newsletters.

- **MORE INFORMATION?**

If you would like more information, or are interested in placing an advertisement, call **Richard Adams** on **07710 233439** or e-mail **The Puffin** at puffinpages@gmail.com.

Advertising charges range from £12 for a small ad to £120 for a full page; pricing is by size. We're happy to negotiate on variations of size, repeat advertisements or any other requirements that you may have.

Please note that sizes may be approximate as they depend on text layout. We can design an advertisement for you if you'd like us to do so.

- **NEW! SMALL ADS!**

How about placing a small ad in **The Puffin**? Ask us for more details.



Behind the scenes at The Puffin: Part 1

Andrew Perrott

This is an introduction with a difference.

I'd not thought of writing a 'behind the scenes' article about **The Puffin**, but a few weeks ago the other Editorial Team members said, 'our readers might be interested in what goes on behind the scenes, so do one, or else'. I didn't like the sound of 'or else' so I decided to take the easy way out, and I've started with a potted history of **The Puffin's** life.

The Puffin doesn't just 'happen' as if by magic...

There are now seven members on its Editorial Team, all volunteers, all unpaid. Why do we publish **The Puffin**?...because we love where we live and want to celebrate the strong 'sense of community' in our lovely part of the world, Seiriol Ward, the 'pretty pointy piece' of Anglesey...and because we enjoy doing it.

Each of the Editorial Team members has different strengths and expertises, ranging from networking and fundraising to design and typesetting, the latter two falling into my lap because similar tasks formed the main part of my last full-time job.

Regular contributors will know that I e-mail them a month or so before I start work on setting the text for the next number. The first thing that goes through their minds is probably something along the lines of 'oh, heavens, he's nagging again', but you contributors out there are pretty good (I really should say *very* good in case some of you start to stick pins in wax effigies of me) at sending in articles, news, information and the like, often well before the due date.

There's no escaping **The Puffin's** clutches once a person is on my e-mailing list: like a fly in a spider's web, that person is trapped, and receives my quarterly e-mail as a prod! The process seems to work, because contributors always come up with the goods, and the breadth and variety of what we receive is just part of what makes publishing **The Puffin** so rewarding and satisfying.

Part 2 of *Behind the scenes at The Puffin* will appear in August.

October 2000: the beginning, and the first Cylchlythyr/Newsletter

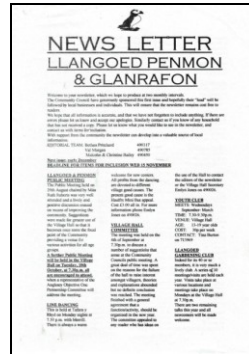
The Puffin's first predecessor took wing in the form of the *Cylchlythyr Llangoed, Penmon a Glanrafon/Newsletter Llangoed, Penmon & Glanrafon*, complete with a Puffin logo and small but dedicated Editorial Team.

The *Cylchlythyr/Newsletter* appeared every two months until 2005, when it was announced that, owing to external commitments and other factors, the Editorial Team was having to close it down, and its last issue was published in February 2006.

August 2013: The Puffin's first incarnation

Nothing happened for just over seven years, until **The Puffin** appeared on the scene in August 2013, complete with the lovely Puffin logo that is still to be seen on every front cover.

The Puffin's hard-working Editorial Team published it six times a year until June 2016
puffinpages@gmail.com



October 2000: the beginning



August 2013: the first incarnation of **The Puffin**



November 2016: the second incarnation of **The Puffin**



August 2021: **The Puffin** as it is now...a magazine!

when, once again, the writing appeared to be on the wall: **The Puffin's** Editorial Team was faced with work- and other commitments that meant that they simply couldn't keep it going.

The Puffin 16, June 2016, was the last to appear.

November 2016: The Puffin's second, and current, incarnation

As luck would have it there was scarcely a break in publishing before a new Editorial Team was in place, which meant that **The Puffin's** second incarnation came on the scene in November 2016.

The Puffin and its predecessors were delivered door-to-door in the Llangoed/Penmon/Glanrafon area until the COVID pandemic knocked our lives sideways.

COVID and changes...

Several changes to **The Puffin** started to take place in the run up to the COVID pandemic.

Late in 2019, following the sad demise of the *Beaumaris & Llanfaes Newsletter*, **The Puffin** was asked if it would fill the gap. The answer was 'yes', but this meant a gradual change from door-to-door delivery because (1) of the cost of additional copies, (2) the need to recruit a much larger band of volunteers and, of course, (3) the need for the Editorial Team to manage the whole thing, which was more than the small Team could take on.

Door-to-door deliveries stopped as the pandemic took hold, but just one issue of **The Puffin** was published on-line only: number 32, May 2020. By this time **The Puffin** had started to become available at several outlets in Beaumaris and Llanddona. The number of outlets grew bit by bit, and there are now 11, from Llandegfan to Trwyn Du/Black Point at Penmon.

Early in 2020 **The Puffin** was honoured to be selected as the means of providing COVID-related information to every household in the LL58 and LL59 Postcode areas. This resulted in our finding our current excellent printer, based in Trearddur Bay, and **The Puffin** has been printed in colour ever since.

The latest step in **The Puffin's** rollercoaster life has been its transformation into a quarterly community *magazine*. A friend gave me a desktop publishing package in 2021. While it's not the easiest thing to use it has enabled us to publish **The Puffin** with some really smart and attractive front covers that feature the work of local artists, interspersed with my occasional 'art forgeries', some of which feature Tilly, my Weary Westie, whose articles have become a regular quarterly fixture in **The Puffin**.

A big 'thank you'

We do the donkeywork, but **The Puffin** is what *you* make it. We couldn't publish without you – your financial support, your information and articles, you name it – and in November we'll be publishing **The Puffin** number 50!

A historical record

We have a copy of every past issue, including the original *Cylchlythyr/Newsletter*. They're held in .pdf format as a historical record, and we have

printed copies of **The Puffin** since November 2016 as well.

📧 The Puffin: on-line
www.seiriolalliance.co.uk/newsletters

Anglesey Archives Service

Isle of Anglesey CC's Archive Service holds a copy of every past issue, including the original Cylchlythyr/Newsletter. Some are printed copies and all of them are in .pdf format.

📧 Anglesey Archives Service
www.anglesey.gov.wales/en/Residents/Archives/Plan-your-visit.aspx

May's front cover: spring is upon us

Jane Bunce

There's quite a bit of information in **The Puffin** 48 about the National Open Gardens Scheme, including details of the group opening in Llanddona on Saturday 13 July. Go to page 23 to read more about it.

◆ ◆ ◆
The Puffin's Editorial Team wanted a nature/garden-themed front cover as an 'opener', and I was so pleased to be asked if I had a suitable painting. I did, and I do hope that you like it.

I inherited my love of drawing and painting from my father. He was a landscape painter and art teacher, and was a member of the Manchester Academy of Artists. With his guidance I learnt the importance of observation and practice (which, hopefully, eventually makes perfect). He believed also that it is essential to paint the subjects that really interest you. My parents loved nature; our garden had a glorious display of flowers thanks to my mother's green fingers, and a pond for the wildlife, and my interest in nature grew from those early years.

I went to Altrincham Grammar School and studied art at 'A' level as one of my subjects. While I was there I attended a careers evening and listened to a talk on textile design; it was a revelation to discover that it was possible to earn a living from painting patterns. What joy!

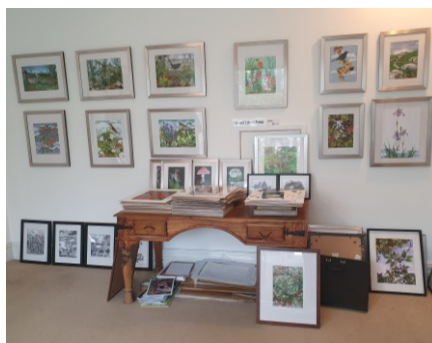
After contacting the Calico Printers Association in Manchester, I was asked to attend an interview, and was offered a position working in their commercial art studio. Here I learnt my trade, beginning with making the coffee. It was hard work, but immensely rewarding. The job wasn't only about being creative but also about having a technical knowledge of the industry. From there, as my experience grew, I was employed by a design company which had a branch in Düsseldorf as well as in Manchester, so I produced work for European and British manufacturers.

The Puffin 48 • May 2024

Eventually I became self-employed, taking on commission work and creating new collections which included wallpaper designs as well as textiles.

These were sold in America, Europe and the UK through a design agency which did all the hard work of travelling and selling, enabling me to stay at home and paint.

In the late 1990s I moved to Penmon with my family, and eventually I retired from designing and began to paint for my own pleasure...no more deadlines or commissions!



My studio: a small selection of my work, and some of my materials



Here on Anglesey I find inspiration all around me; whenever I go for a walk I fill my pockets with bits of plants, twigs, rocks or shells, anything that I find interesting, in fact. I work mostly in watercolours, and also in gouache, which is a water-based medium. I rarely use photographs for reference; I like to have samples of the plants and objects that I paint on my desk so that I can study them carefully.

Birds are much trickier to paint, but I spend a lot of time observing them, and I try to capture their appearance accurately. I hope that my pictures express my love of nature, a love deepened by living on Anglesey with its breathtaking beauty and diversity of wildlife. I believe that a connection with nature is vital for our wellbeing, and that it is essential that we value and protect the natural environment.

If I'm at home visitors are welcome to see my work and have a chat. I will be exhibiting at the David Hughes Centre by Beaumaris castle between Saturday 13 July and Saturday 20 July, with Leah Bunce and Maggie Evans.

☎ 01248 490395, 07947 148031

✉ janebunce@mail.com

📍 Dinmor
Penmon
Anglesey
LL58 8SN

📍 Anglesey Arts Forum: Jane Bunce
<https://angleseyartsforum.org/author/janebunce/>

What's happening where?

What's happening where? continues to grow, and we hope that you continue to find it useful.

If you think that an event is missing and should be mentioned, do make sure that you let us know in good time.

Our 'submissions by' dates are:

- 1 January for February
- 1 April for May
- 1 July for August
- 1 October for November

Our contact details are always given on the back page in *Editorial information and other 'useful to know' stuff*.

We want to support you, but we can't do so if you don't support us by feeding us with information. Support us to support your communities!

Keep an eye on websites, local advertising and social media, Facebook and the like, because changes can affect events either way, some happening suddenly or being cancelled just as suddenly. In short, check beforehand to make sure that an event is happening.

If your organisation has opportunities to fill, think about placing an advertisement in **The Puffin**.

Our contact details are always on the back page.

Some useful services

- **Cashpoints:** there are now no banks in the Seiriol area, but we know of two cashpoints:
 - **Jolly's**, 5 Bulkeley Terrace, Beaumaris LL58 8AU, outside, at what used to be the NatWest bank
 - **Spar**, 11 Castle Street, Beaumaris LL58 8AB: inside, during opening hours

Please let us know if you are aware of any others so that we can list them here.

- **Post Offices:** note also that you can withdraw cash with your bank card at any Post Office counter (Spar, Beaumaris and Pentraeth, and Morrisons Daily, Llangoed, for example) free of charge.
- **Beaumaris library:** Beaumaris library is at:

www.seiriolalliance.co.uk/newsletters/

David Hughes Community Centre
Beaumaris
Anglesey
LL58 8AL

Opening times are:

Monday 2.30pm-6.00pm
Wednesday 10.00am-12.30pm
Friday 9.00am-1pm

☎ 01248 810659

✉ ddxlh@anglesey.gov.wales

Mobile library: the mobile library visits communities which are more than ¼ mile from one of Anglesey's libraries. It carries a small but comprehensive selection of books and tapes, and also provides a gateway to other library services.

The mobile library visits the following communities on the third Friday of the month:

- **Llanddona:**
Neuadd Bentref Llanddona
Village Hall
11.30am-12.30pm
Maes Gwyn
1.10pm-1.45pm
- **Llanfaes:**
Siop Llandêg
9.30am-10.00am
- **Llangoed:**
Pont y Brenin
10.10am-10.40am
Aberlleiniog car park
10.45am-11.15am
- **Llansadwrn:**
Tan-y-Ffordd
2.00pm-2.30pm

☎ 01248 752093, 01248 752095

Telephone Llangeferni Library if you would like more information about its doorstep delivery service.

☎ 01248 752093

📄 Mobile and Home Library Service
www.anglesey.gov.wales/en/Residents/Libraries/Mobile-and-Home-Library-Service.aspx

- **Household waste recycling:**
Anglesey residents do not need to book a slot to use the Penhesgyn Household Waste Recycling Centre (Menai Bridge LL59 5RY):
Vehicles must be no longer than 5.0m and no higher than 2.1m, including any attachments.
Householders must produce proof of residency on the Isle of Anglesey, such as a current Council Tax bill, driving licence or recent (less than 3 months old) utility bill.
Opening times are:
Monday 10.00am-4.30pm
Tuesday 10.00am-4.30pm
Friday 10.00am-4.30pm
Saturday 10.00am-4.30pm
Sunday 10.00am-4.30pm

puffinpages@gmail.com

📄 Penhesgyn Household Waste Recycling Centre
www.anglesey.gov.wales/en/Residents/Bins-and-recycling/Recycling-centres-and-recycling-banks/Penhesgyn-Household-Waste

☎ Waste Management
01248 752093



- **Mobile banking:** NatWest is alone among the main banks in providing a mobile banking service in our area.

A Mobile Branch visits Beaumaris and Menai Bridge every week:

- **Beaumaris:**
Castle Square
LL58 8DA
Wednesday 10.30am-11.15am
- **Menai Bridge:**
Wood Street car park
LL59 5QW
Wednesday 3.35pm-3.55pm

📄 A directory for your local banking services
www.natwest.com/banking-with-natwest/other-ways-to-bank-with-natwest-banking-me.html#mb



- **Mobile Post Office:** the Post Office provides a mobile service across Anglesey.

It makes the following weekly local stops at Llanddona and Llandegfan:

- **Llanddona:**
Neuadd Bentref Llanddona
Village Hall
LL58 8TS
Tuesday 2.30pm-3.00pm
Maes Gwyn
LL58 8TP
Tuesday 3.05pm-3.30pm
- **Llandegfan:**
Bro Llewelyn
LL59 5UP
Tuesday 3.45pm-4.15pm
Maes Ffynnon
LL59 5PS
Tuesday 4.15pm-4.45pm

All the usual Post Office services are available.

Visit Maesgeirchen Mobile Post Office's Facebook page for up-to-date information about the mobile Post Office service.

📄 Maesgeirchen Mobile Post Office
www.facebook.com/people/Maesgeirchen-Mobile-Post-Office/100057490246225/



Anglesey, Gwynedd

- **Anglesey & Gwynedd Widowed Group:** please note that this is *not* a dating site; the organisers are volunteers and the group is not a charity.

It's a group for widows and widowers aged over 50 (suggested age only) who live permanently in the Anglesey, Bangor and Caernarfon (Gwynedd) areas.

We meet for regular get-togethers: coffee, lunch, days out, leisure activities, evenings out, theatre, concerts, coach trips and so on, and holidays, UK and abroad, and cruises as well.

This is not a support group, just a group of people who have been through the loss of a spouse or long-term partner, and who can empathise with each other but are ready to start enjoying life again.

We use www.meetup.com for information about events and to keep in touch. Search *Anglesey & Gwynedd widowed* and you'll find us.

We are a bilingual group, with membership at roughly 50/50, so we organise Welsh events as well as English.

If you'd like more information please contact me, Lyn Roberts.

☎ 07474 224246

✉ lyn2910@yahoo.co.uk

Beaumaris

- **RNLI: volunteers wanted!** The RNLI is working hard to make itself inclusive, with the Fundraising Team, shop helpers and crews all working together as a team. We'd give a big welcome to anyone who would like to volunteer in any capacity.

200th anniversary! The RNLI's 200th anniversary takes place this year, with national and local celebrations being planned, as well as many extra events.

If you are interested please call in at the RNLI shop by the pier or contact Valary Wakefield on 01248 811375.

Some of this year's events are listed below:

- **Saturday 4 May:** May Day Stalls: various stalls, including cakes, tea, coffee, etc.
- **Sunday 5 May:** Snowdon Climb: sponsored run/walk up Snowdon by the crew and, hopefully, crew from other stations...in lifejackets!
- **June/July** (date to be confirmed): flotilla of boats: this is organised by other RNLI stations; the flotilla will pass by but at present it's not certain if it'll stop on the way past.



ALLECH CHI HELPU

GYRRU POBL I
APWYNTIADAU
ANGENRHEIDIOL AT Y
MEDDYG NEU'R YSBYTY



CAN YOU HELP

DRIVE PEOPLE TO VITAL
GP AND HOSPITAL
APPOINTMENTS



Rydym yn chwilio am
bobl all roi ychydig o
oriau y mis!



We are looking for
people who can spare
a couple of hours a
month!

BYDDWN YN TALU:

- COSTAU GDG (DBS)
- COSTAU TANWYDD
- COST O UNRHYW DREULIAU ERAILL

AM FWY O WYBODAETH CYSTLLTWCH CYDA NI

LINC@MEDRWNMON.ORG
01248 725745

WE WILL COVER:

- COST OF DBS
- COST OF FUEL
- COST OF ANY OTHER EXPENSES

FOR MORE INFORMATION PLEASE CONTACT US

LINC@MEDRWNMON.ORG
01248 725745

- **Saturday 8 June/Sunday 9 June:** eight-crew liferaft: eight sponsored crew members to spend 24 hours in a liferaft on the Strait.
- **Saturday 8 June/Sunday 9 June:** Saturday: stalls, cakes, tea, coffee, knitted goods, etc. Sunday: tea, coffee, biscuits.
- **August-October** (date to be confirmed): RNLI Scroll travelling countrywide, being signed at various RNLI stations.
- **1 August:** BBQ outside the RNLI boathouse to celebrate the RNLI's 200th Anniversary.
- **24 August:** Lifeboat Day: full day of events: various stalls, including cakes, tea, coffee, etc.

This isn't a full list, so keep a lookout for notices in Beaumaris, and check Facebook regularly.

📧 Beaumaris RNLI Lifeboat
www.facebook.com/beaumaris.rnli.lifeboat/

📧 Beaumaris Lifeboat Station
<https://rnli.org/find-my-nearest/lifeboat-stations/beaumaris-lifeboat-station>

The Beaumaris Fundraisers send very grateful thanks to all who supported the Easter stalls outside the RNLI boathouse on Easter Saturday, which raised a wonderful total of £671.75.



- **Clwb Bowlio Beaumaris Bowling Club:** Clwb Bowlio Beaumaris Bowling Club fielded eight teams last year, in five different Leagues, and would like to welcome new members, young or old, male or female.

The Club is at Happy Valley, by the beautiful Beaumaris Castle. For more information and/or a taster session please contact Dave Mathias, Secretary.

See also page 14.

✉ davemathias49@gmail.com

☎ 01248 490222, 07712 121147

📧 Beaumaris Bowling Club
<https://beaumarisbowlingclub.yolasite.com/>

📧 Beaumaris Bowling Club
www.facebook.com/people/Beaumaris-Bowling-Club/100063490482942/

- **Clwb Rhwyfo Beaumaris Rowing Club:** there's a long history of competitive rowing on the Strait. The Club runs taster events during April and September for people to learn about, and have a go at, rowing a Celtic. It doesn't matter if you've never rowed before; we'll show you the ropes.

Visit our website if you'd like to know more about us.

📧 www.beaumarisrowingclub.org.uk/



- **Beaumaris Cricket Club:** we welcome new members; our average age is somewhere around 50, a few younger and some older! If you'd like to join us give one of us a call:

Chairman: Ian Gorst Jones,

☎ 01248 811248

Captain: David Graves,

☎ 07851 632881

Vice-Captain: Evan Hughes,

☎ 07999 505001

Match organiser: Philip Lewis,
☎ 07484 262297

📧 www.facebook.com/people/Beaumaris-Cricket-Club/100057043976040/

- **Beaumaris Film Night:** put the first Thursday of every month in your diary! Have a look below at what's coming this autumn/winter.

Refreshments are available from 7.00pm; the film starts at 7.30pm. Tickets are still just £5 each, and are available in advance from reception, or telephone to book.

☎ 01248 811200

Volunteers are always welcome at Beaumaris Film Night; please contact Stephen Marsden for more information.

☎ 07774 699685

2 May: *Wonka* (2023), starring Timothée Chalamet, Hugh Grant, Olivia Colman.



A musical prequel to *Charlie and the Chocolate Factory* (1h 56m; PG).

6 June: *The Lesson* (2023), starring Richard E Grant, Julie Delphy, Daryl McCormack.



www.seiriolalliance.co.uk/newsletters/

A thriller with an author hiring an ambitious young tutor for his son (1h 43m; 15).

4 July: *Jerry & Marge Go Large* (2022), starring Annette Bening, Bryan Cranston, Rainn Wilson.



The true story of a couple beating the lottery to benefit their home town (1h 36m; 15).

1 August: *One Life* (2023), starring Anthony Hopkins, Lena Olin, Johnny Flynn.



Bio-drama of a London broker saving hundreds of Jewish children fleeing the Nazis (1h 49m; 12A).

- **Beaumaris Over 50's Club:** Club meetings take place at 2.00pm on the last Monday of the month.

We extend a warm welcome to new and old members.

Put these dates in your diary!

- **29 Ebrill/29 April:**
Tŷ Arwerthiant Bae Colwyn
Colwyn Bay Auction House
- **20 Mai/20 May:**
Canu er Pleser
Singing for Pleasure

Gŵyl Banc: 27 Mai
Bank Holiday: 27 May
- **24 Mehefin/24 June:**
Canwyr a Te Mefus
Guitarists and Strawberry Tea
- **Gorffennaf-Awst/July-August:**
Cyfnod gwyliau
Holiday period

For more details, please contact the Chair, Mike Davies.

☎ 01248 812157, 07483 827069

✉ dmikedmail@gmail.com

📍 The Iorwerth Rowlands Centre
Steeple Lane
Beaumaris
LL58 8AE

- **Menopause Café:** the first Saturday of the month at Canolfan Hamdden Beaumaris, 10.00am-12.00 noon, starting 4 May...a warm, respectful, welcoming space for those who are impacted by anything that relates to menopause as part of providing community wellbeing places.

Entry is £2.50, the proceeds to go to The Canolfan Development Fund.

✉ enquiries@canolfanbeaumaris.org.uk

☎ 01248 811200

- **Gŵyl Beaumaris Festival 2024:** get ready to immerse yourself in celebrating eight days of culture and creativity at Gŵyl Beaumaris Festival 2024!

From 22 May to 29 May, the charming town of Beaumaris will come alive with world-class jazz, the elegance of opera, engaging talks, mesmerising orchestral, band and choral performances, as well as art and cabaret.

Regardless of whether you're a music aficionado, a lover of thought-provoking discussions, or simply seeking inspiration, this Festival has it for you.

Get your diary out and go to page 17, where there's more about what's on, and visit our website for full details.

Don't miss out on this unforgettable experience!

Booking and venues:

📍 Gŵyl Beaumaris Festival
www.beaumarisfestival.org

📍 Gŵyl Beaumaris Festival: tickets
www.beaumarisfestival.org/buy-tickets

📍 Canolfan Hamdden Beaumaris
Leisure Centre
Rating Row
Beaumaris
Anglesey
LL58 8AL

☎ 01248 811200

CAFFI Menopôs

I UNRHYW UN Y MAE DRYSFAR MENOPÔS YN EFFEITHIO ARNYNT

DYDD SADWRN 1AF POB MIS 10-12YB

£2.50 GYDA PANAD, BISGEDI, NEU FFRWYTHAU

MAI 4YDD MEHEFIN 1AF GORFFENNAF 6ED AWST 3YDD HYDREF 5ED TACHWEDD 2IL RHAGFYR 7ED

YSTAFELL GYNNES A HAMDDENOL HYGYRCH, PARCHUS A CHYFRINACHOL.

I'W GYNNAL YNG NGHANOLFAN BIWMARES

menopause CAFÉ

FOR ANYONE AFFECTED BY THE MENOPAUSE MAZE

1ST SATURDAY OF EACH MONTH 10-12PM

£2.50 HOT DRINK BISCUITS OR FRUIT

A WARM RELAXED SPACE ACCESSIBLE, RESPECTFUL AND CONFIDENTIAL.

**MAY 4TH
JUNE 1ST
JULY 6TH
AUGUST 3RD
OCTOBER 5TH
NOVEMBER 2ND
DECEMBER 7TH**

HELD AT CANOLFAN BEAUMARIS

☒ Bulkeley Hotel
Castle Street
Beaumaris
Anglesey
LL58 8AW

☒ Iorwerth Rowlands Centre
Steeple Lane
Beaumaris
Anglesey
LL58 8AE

☒ Church of St Mary & St Nicholas
Church Street
Beaumaris
Anglesey
LL58 8AB

- **Castle Players present "Ghost Writer"**: this May, Castle Players are proud to present "Ghost Writer," a play that expertly weaves together elements of comedy, mystery, and the supernatural. Directed by Jane Roberts, this unique production promises an evening of laughter, suspense, and ghostly intrigue.



"Ghost Writer" tells the story of Edward, a promising playwright haunted by the spirit of his late wife, Ruby. On the anniversary of Ruby's mysterious death, Edward finds himself caught in a humorous and ghostly whodunnit. With its fast-paced farce and engaging plot, the play is a testament to the talent and creativity of the Castle Players.

Recommended for audiences over the age of 16, this production promises to captivate and entertain, ensuring an unforgettable night out. Join us for a performance filled with laughter, mystery and surprises.

- o **Dates:** 1, 3 & 4 May, 7.30pm; doors open at 7.00pm
- o **Venue:** Beaumaris Town Hall, Castle Street, LL58 8AP
- o **Tickets on-line:** £12, via the Castle Players website
- o **Tickets in person:** from: The Bull Hotel, Castle Street LL58 8AP
Tinkers and Belles, Castle Street, LL58 8AP

☒ Castle Players
<https://castleplayersbeaumaris.org.uk>



- o **Canolfan Hamdden Beaumaris Leisure Centre:** There's so much happening at Canolfan Hamdden Beaumaris that we don't have room for it here, so see our centre-spread on pages 20-21 to find out what's going on, and keep up-to-date with everything via social media.

☒ Canolfan Hamdden Beaumaris Leisure Centre
Rating Row
Beaumaris
Anglesey
LL58 8AL

☎ 01248 811200

Award-winning pizzas, burgers & cocktails
Vegan & gluten-free options available
Dog-friendly
Open daily from 10.00am
Black Point, Penmon,
Anglesey LL58 8RR
☎ 01248 490140
www.pilothousecafe.com/

☒ enquiries@canolfanbeaumaris.org.uk

☒ Canolfan Beaumaris
www.canolfanbeaumaris.org.uk/

☒ Canolfan Beaumaris
www.facebook.com/canolfan.beaumaris.7/



- o **Seiriol Good Turn Scheme:** if you live in the Seiriol Ward area (Beaumaris, Glanrafon, Llandegfan,

Llanddona, Llanfaes, Llangoed, Llansadwrn and Penmon) the Seiriol Good Turn Scheme may be able to help you.

The services offered by the Scheme are provided by volunteers, and offer help to any person living in the Seiriol Ward who, due to illness, incapacity or some other need, may benefit from the help that is available.

If you feel that the Scheme could help you please telephone us and we will arrange a home visit to discuss your needs.

☎ 01248 305014

☎ Monday-Friday, 9.00am-5.00pm

See also pages 14 and 15.



- o **Beaumaris Makers Market:** Castle Square, Beaumaris LL58 8AL (in front of the Castle Court Hotel, and adjacent to the castle).

☒ Beaumaris Makers Market
☒ www.facebook.com/beaumarismakersmarket/

- **Beaumaris Artisan Market:** Rating Row, Beaumaris LL58 8AP (in front of the David Hughes Community Centre).

☒ Beaumaris Artisan Market
☒ <https://beaumarisartisanmarket.blogspot.com>

☒ [@beaumariswelshartisanmarket](https://beaumariswelshartisanmarket.org.uk)
☒ [@outlook.com](https://beaumariswelshartisanmarket.org.uk)

- **Dancing at the Canolfan!** Want to learn to dance? You can dance but want to improve? Come along to Caroline's friendly classes at Canolfan Hamdden Beaumaris on Fridays, 7.00pm-9.00pm; everybody welcome.

☒ enquiries@canolfanbeaumaris.org.uk

☎ 01248 811200

- o **H'Artworks on Tour:** until recently, Anne Snaith was 'Artist in Residence' at the Bulkeley Hotel, Beaumaris.

Anne's format has changed, and she is now 'H'Artworks on Tour'. Anne is continuing to run her classes as before, but at her Beaumaris home, and locally, in and around Beaumaris.

Anne can also book bespoke classes at your home; please ask for more information.

Here's a sampler of the classes that Anne runs:

- o **Children's Art Club for ages 7-12:** £15.00 per head, including

www.seiriolalliance.co.uk/newsletters/

professional tuition in a wide variety of media.

(Tuesdays 4.30pm-5.30pm)

- **Watercolours: beginners and intermediate:** fun and friendly; a block of ten sessions costs £150. (Wednesdays 1.00pm-3.00pm)

Each session is 'stand alone', so people can join later and create a picture each session.

If you are late joining the course, fees will be adjusted accordingly.

- **Watercolours and mixed media:** fun and friendly; a block of ten sessions costs £150. (Thursdays 1.00pm-3.00pm)

Each session is 'standalone', so people can join later and create a picture each session.

If you are late joining the course, fees will be adjusted accordingly.

- **Young People's Art Group for ages 12-18:** £15.00 per head, including professional tuition in a wide variety of media. (Thursdays 4.30pm-5.30pm)

Materials are included.

- **One-to-ones:** spaces are available for one-to-one private tuition in 1- or 2-hour blocks to suit.

Please contact Anne if you would like more information, or would like to book a place:

☎ 01248 810631, 07531 384434

✉ hartworks@btinternet.com

🌐 [www.facebook.com/Hartworks Gallery/](http://www.facebook.com/HartworksGallery/)

Be sure to keep an eye on social media, such as Facebook and Instagram, and read more on page 35.

Glanrafon

- **Ysgoldy Llanfihangel Schoolhouse**, Glanrafon LL58 8PH: gwasanaethau/services:
 - 12 Mai/12 May: Parch R E Hughes, Nefyn
 - 9 Mehefin/9 June: Parch Nesta Davies, Abergele
 - 14 Gorffennaf/14 July: Arfon Wyn, Llangwyllog
 - 12 Awst/12 August: Parch Robert Townsend, Beaumaris
 - 8 Medi/8 September: Dafydd Iwan, Llandwrog
 - 13 Hydref/13 October: Parch Huw Pritchard, Llangefni
 - 10 Tachwedd/10 November: Walter Glyn Davies, Amlwch

Llanddona

- **Neuadd Bentref Llanddona Village Hall:** we are a small and dedicated group of Committee Members and volunteers, and we would love to

puffinpages@gmail.com

welcome more people on board!

Please contact us if you'd like to become involved in any way.

The Hall is available for hire. Please contact us if you would like more information or to make a booking.

✉ secretary@neuaddbentrefllanddona.co.uk

☎ 07733 176004, 07768 018370

📍 Neuadd Bentref Llanddona Village Hall
Llanddona
Anglesey
LL58 8TS

🌐 Neuadd Bentref Llanddona Village Hall
www.facebook.com/llanddonavillagehall/

🌐 Cymuned Llanddona Community
www.facebook.com/groups/llanddona/

Here are some dates for your diary:

- Friday 31 May 7.00pm-10.00pm Bingo
- Saturday 29 June 10.00am-2.00pm Summer Fair & Fun Dog Show
- Friday 2 August 7.00pm-10.00pm Bingo
- Friday 4 October 7.00pm-10.00pm Bingo
- Friday 25 October 5.00pm-8.00pm Halloween Party
- Saturday 23 November 10.00am-2.00pm Christmas Fair
- Saturday 7 December times to be confirmed Wreath Workshop & Afternoon Tea
- Friday 13 December times to be confirmed Caffi Ni Christmas Meal
- Friday 18 December times to be confirmed Table Decorations

There may be additions as the year progresses, so keep an eye on noticeboards and social media.

Now turn to page 28 and read more about our activities.



- **Caffi Ni:** every Friday, 11.45am-2.00pm, Neuadd Bentref Llanddona Village Hall.

Come and enjoy a home-cooked two-course meal and a drink in a relaxed and friendly atmosphere for

only £8 per person.

A special roast chicken dinner is available on the first Friday of every month.

All food is freshly prepared on the premises by volunteers.

Booking is advisable; please telephone Pat on 07768 018370.

- **Paned a Sgwrs:** every Tuesday, 2.00pm-3.00pm, at Neuadd Bentref Llanddona Village Hall.

Improve your Welsh-speaking skills with this small, friendly group over a complimentary paned/cuppa and biscuits. All levels of Welsh speakers are welcome.

Sessions are informal so that people can 'drop in' for a quick chat or stay for the full session if preferred.

For more information contact Gill Vaughan or Sheila Healey.

☎ 07925 184476 Gill Vaughan

☎ 01248 810619 Sheila Healey

- **Caffi Cofio:** the first and third Wednesdays of the month, 2.00pm-4.00pm, Neuadd Bentref Llanddona Village Hall.

Caffi Cofio is provided by Carers Trust North Wales Crossroads Care Services. It's a friendly service for people who live with memory loss, and their carers.

Transport to and from the group can be arranged, organised by the Seiriol Good Turn Scheme for a small fee.

Please telephone for more information or to book a place.

☎ 01492 542212



Gong Bath: the first Tuesday of the month, starting at 7.00pm, Neuadd Bentref Llanddona Village Hall.

It's relaxation and meditation through sound...lying on a mat, you close your eyes and relax for an hour whilst being bathed in powerful sound waves.

Please contact me, Steph Healy, for more information or to book a place.

☎ 07534 118899

✉ pure.sound@outlook.com

- **Free guitar lessons:** Monday evenings, Neuadd Bentref Llanddona Village Hall:
 - Under 10s: 5.30 pm
 - 11+ years: 6.00pm

You don't have a guitar? That's not a problem; we have some guitars available for use in the classes.

FUN DOG SHOW



JUNE
29
MEHEFIN

CLASSES

Gast Ddelaf • Prettiest Girl
 Ci Harddaf • Most Handsome Boy
 Ci bach pertaf (o dan 12 mis) • Cutest Puppy (under 12 months)
 Ci Hŷn Gorau (yn hŷn na 10 oed) • Best Golden Oldie (over 10)
 Cynffon Prysuraf • Waggiest Tail
 Ci blêraf • Scruffiest Pooch
 Cast Gorau • Best Trick
 Ci Gorau yn Dal Bisgedi • Best Biscuit Catcher
 Ci yr hoffai'r Barnwr • Dog the Judge would
 Fynd Adref • most like to take home
 Gorwedd i Gerdd • Musical Lie Downs
 Ras Llwy ac Wy • Egg & Spoon Race

11:00 AM
 Lluniaeth a Chofrestru
 Refreshments and Registration

1:00 pm
 Dog show

I'W GYNNALAR
 to be held at
 Neuadd Bentref Llanddona Village Hall
 LL58 8TS

St Iestyn's Church Eglwys St Iestyn
 and local causes ac elusennau lleol
 for more info contact : Lucy Low 0777 447 2511 : am ragor o fanylion

Please contact Miriam Williams for more information.

☎ 07733 176004

- **Ciwb Ffermwyr Ifanc Llangoed/ Llangoed Young Farmers Club:** meets every Monday, 7.45pm, at Neuadd Bentref Llanddona Village Hall (not Llangoed).



- **Llanddona Writers Group:** thinking of a family memoir, or short story, or just the chance to do a little writing alongside friends?

We meet every three weeks on a Friday at 11.00am.

We enjoy hearing from and encouraging each other, and maybe having a try at something new.

Why not come along and see...

If you'd like to know more, please contact Stephen Marsden.

☎ 07774 699685.

- **Llanddona Table Tennis Group:** we meet every Monday at Neuadd Bentref Llanddona Village Hall, 10.00am-12.00 noon.

Please contact Kirsty Simpson if you're interested.

✉ kirstyalisonsimpson@hotmail.com

- **Village Knit Club:** every Monday at the Owain Glyndŵr, at 7.15pm...looking forward to seeing you all!

For more information contact Meg Marsden.

☎ 07913 223435

- **Yr Owain Glyndŵr:** Community Pub Hero Award Winner 2024! Turn to page 34 and read more about it...

Contact us for information about what's on.

☎ 01248 810710

📧 The Owain Glyndŵr
 Llanddona
 Anglesey
 LL58 8UF

✉ contact@ogdllanddona.co.uk

📧 Cymuned Llanddona
 Community
www.facebook.com/groups/llanddona/

- **Rali Tractor Llanddona Tractor Rally 2024:** put Saturday 17 August in your diary: that's the date of this year's Rali/Rally...now in its fourth year!

Please come and support us, and enjoy the spectacle of tractors of all sizes, and entertainment as well, at yr Owain Glyndŵr in Llanddona.

- 10.00am: Owain Glyndŵr opens; refreshments all day, including bacon baps, tea, coffee, and Hogs Môn will be hog-roasting in the evening
- 11.00am: tractors depart
- 4.00pm(ish) onwards: tractors return

Entertainments:

- Miv, Kev and Dave from 3.00pm
- Wil, Tan & Teulu from 6.00pm
- Adelphi & Guests to finish the evening off

Funds raised will support good causes, including:

- Blaen y Coed Centre for adults with learning difficulties, Llangoed

LLANDDONA VINTAGE TRACTOR RALLY



St Iestyn's Church and Local Causes
 for more info contact : Lucy Low 0777 447 2511

- o Clwb Ffermwyr Ifanc Llangoed/
- o Llangoed Young Farmers Club, based at Neuadd Bentref Llanddona Village Hall
- o yr Hen Ysgol, Llanddona
- o St Iestyn Church Restoration
- o Purchasing a defibrillator for placing at yr Owain Glyndŵr

Don't miss it!



- **Fun Dog Show and Spring Fair:** Saturday 29 June, 10.00am-2.00pm, Neuadd Bentref Llanddona Village Hall. Entry is free.

There will be produce stalls, crafts, artisan crafts, food, drink and cakes... and the Fun Dog Show, of course!

The Fun Dog Show details are given in the poster on page 10, so start brushing up your dogs' tricks!

- **NEGES BWYSIG Sioe Geffylau a Merlod Llanddona a Beaumaris:** yn dilyn cyfarfod gynhaliwyd diwedd llynedd i drafod dyfodol y Sioe, rhoddwyd dyddiad yn y calendar i'w chynnal diwedd Awst 2024 ond yn anffodus, ni fydd hyn 'nawr yn bosib.

Buom yn pendroni cryn dipyn cyn dod i'r penderfyniad anodd yma a deallwn bydd yn newyddion yn siomedig i lawer.

- Miriam Williams ar ran Pwyllgor Sioe Geffylau a Merlod Llanddona a Beaumaris

IMPORTANT NOTICE Llanddona & Beaumaris Horse & Pony Show: following an open meeting held late in 2023 to discuss the future of the Show, a date had been put in the diary to host the event at the end of August 2024.

Unfortunately, this is not going to be possible. Whilst this will be disappointing news for many, the decision has not been taken lightly.

- Miriam Williams on behalf of Llanddona & Beaumaris Horse & Pony Show Committee

- **National Open Garden Scheme 2024:** the National Open Garden Scheme (NGS) is coming to Llanddona on Saturday 13 July, with nine gardens participating. Put the date in your diary!

Go to pages 23-27, where you'll find more detailed information, including a local map and list of all the NGS openings in Anglesey and Gwynedd.

See also pages 16 and 17.



puffinpages@gmail.com

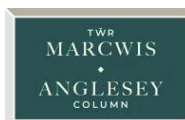
Llandegfan

- **Eisteddfod Bro Llandegfan 2024:** Llandegfan Parish Hall, Saturday 6 July from 10.30am; see page 12.
Come and support one of the oldest community eisteddfodau in Wales.
📧 Cymdeithas Eisteddfodau Cymru
<https://steddfota.cymru/wp/>

Llanfairpwll

- **Marquess of Anglesey's Column:** climb the Column's 115 steps for spectacular views over Anglesey, the Menai Strait and Snowdonia.
📧 post@angleseycolumn.org
☎ 07748 807402
📍 Tŵr Marcwis/Anglesey Column
www.angleseycolumn.com
📧 Marquess of Anglesey's Column
Parc Tŵr
Llanfairpwll
Anglesey
LL61 5NJ
Opening times:
Wednesday-Sunday
April-September 9.00am-5.00pm
October-March 10.00am-4.00pm
📍 Marquess of Anglesey's Column
https://en.wikipedia.org/wiki/Marquess_of_Anglesey%27s_Column

See also The Puffin 44, page 24.



Llangoed

- **Llangoed Village Hall:** Llangoed Village Hall is home to community events, concerts, performances, films, health and wellbeing.
It is available for parties, functions and weddings. Please contact us for more information or to make a booking.
📧 llangoedvillagehall@gmail.com
Visit our website and Facebook page for more details.
📍 www.llangoedvillagehall.com
📍 www.facebook.com/llangoed.villagehall
📍 www.instagram.com/llangoed.villagehall
Sign up for our newsletter!
📍 www.llangoedvillagehall.com/subscribe



- **Y Dewis:** interactive cinema with life performance, Llangoed Village Hall, Thursday 9 May, 7.30 pm. Tickets are available at Llangoed Village Hall Store.

📍 Llangoed Village Hall: Store
www.llangoedvillagehall.com/store

- **Eurovision Final:** Llangoed Village Hall, Saturday 11 May, 7.00pm.
- **Table Top Sale/Repair Café:** Llangoed Village Hall, Sunday 19 May, 10.00am-2.00pm.

- **Sioe Flodau Llangoed Flower Show:** Llangoed Village Hall, Saturday 6 July, 2.00pm-5.00pm.

Check our 2024 categories, plan your creations, sponsor a category!

📍 Sioe Flodau Llangoed Flower Show
www.llangoedflowershow.com

📧 julie@plasbodfa.com

📍 Plas Bodfa
Llangoed
Anglesey
LL58 8ND

📍 Sioe Flodau Llangoed Flower Show
www.facebook.com/groups/sioeflodauLLangoed
www.instagram.com/llangoedflowershow

See The Puffin 47, pages 24, 25.

- **Llangoed Harvest Festival:** Save the date! Llangoed Village Hall, Saturday/Sunday 19/20 October, 10.00am-4.00pm.

- **Llangoed WI:** we meet on the first Wednesday of the month in Llangoed Village Hall; meetings begin at 2.00pm.

We're a lively group of mixed ages, so, ladies, do feel welcome to join us. Contact our Secretary, Catherine Sproston, for more information.

☎ 07900 382200

See also page 14.



- **Yoga:** Llangoed Village Hall, Mondays 6.30pm-7.45pm: just right for beginners as well.

For more information please contact emilykyleyoga@gmail.com.

- **Camau Bach:** Llangoed Village Hall, every Friday during term-time, 9.30am-11.00am: for children and their carers.

☎ Rev Lesley Rendle 07817 873080

- **Zumba:** Llangoed Village Hall, Wednesdays, 6.30pm-7.30pm.

- **Llangoed Knitting Club:** we meet at the Pont y Brenin Hub on the third Monday of the month, 2.00pm-4.00pm.

If you'd like to join us, please contact:

Elizabeth Roberts
Bodwyn
Llangoed
LL58 8NP

- **Seiriol Men's Shed:** we meet on Tuesdays and Thursdays, 10.00am-1.00pm, in our workshop adjacent to Haulfre Residential Home, Llangoed.

From the direction of Beaumaris:

- Go through Llangoed, past Morrisons Daily on the right, and down the hill
- Go over the little bridge over the stream at the bottom and up the hill for about 200 yards
- Turn right at the *Gerddi Haulfre Gardens* sign into the Haulfre Residential Home car park and walk down the slope (to the right if you're facing Haulfre) towards the gardens
- Our premises are very close; our workshop is on the left, and our other premises are on the right.

PS: it's men only!...and please park thoughtfully; the car park is used by others as well. See also page 30.

For more information, or if you'd like to join us, please contact:

☎ Steve Jones 07368 219048
☎ Mike Thomas 07941 103386

✉ mensshedseiriol@gmail.com



Penmon

- **National Open Garden Scheme 2024:** the National Open Garden Scheme (NGS) is coming to Penmon on Sunday 1 September, with two gardens participating. Put the date in your diary!

Go to pages 23-27, where you'll find more detailed information, including a local map and list of all the NGS openings in Anglesey and Gwynedd. See also pages 16 and 17.



Eisteddfod Bro Llandegfan 🌸

Siân Arwel Davies, Trysorydd

Mae trefniadau ar gyfer Eisteddfod Bro Llandegfan mewn llaw a'r Rhestr

The Puffin 48 • May 2024

Testunau ar gael ar gwefan Cymdeithas Eisteddfodau Cymru, gan Aelodau o'r Pwyllgor ac mewn gwahanol siopau lleol.

Cynhelir yn ôl yr arfer ar y Sadwrn cyntaf ym mis Gorffennaf sydd yn disgyn eleni ar 6 Gorffennaf. Eleni, byddwn yn dathlu'r canmlwyddiant. Dowch draw i Neuadd y Plwyf, Llandegfan i fwynhau cystadlu brwd a chefnogi un o eisteddfodau cymunedol hynaf Cymru.



Dyma goron yr Eisteddfod ar gadair 1924
This is the crown on the 1924 chair
(Siân Arwel Davies)

Bydd y gweithgareddau yn dechrau am 10.30yb. Edrychwn ymlaen i'ch croesawu yno.

📧 Cymdeithas Eisteddfodau Cymru
<https://steddfota.cymru/wp/>

Eisteddfod Bro Llandegfan

Siân Arwel Davies, Treasurer

The arrangements for the Eisteddfod Bro Llandegfan are in hand and the Programme of Events is available online at Cymdeithas Eisteddfodau Cymru, from Committee Members and in various local shops.

It is held every year on the first Saturday in July which falls this year on 6 July. This year we are celebrating the centenary. Come along to Llandegfan Parish Hall to enjoy the enthusiastic competing and to support one of the oldest community eisteddfodau in Wales.

The events will start at 10.30am. We look forward to welcoming you there.

📧 Cymdeithas Eisteddfodau Cymru
<https://steddfota.cymru/wp/>

Llandegfan: Adroddiad Criw Bore lau 🌸

Siân Arwel Davies, Trysorydd

Bob bore lau, daw criw at ei gilydd i Neuadd y Plwyf, Llandegfan i fwynhau

paned a sgwrs. Mae bwrdd arbennig ar gyfer ymarfer y Gymraeg efo pardner un i un neu mewn grŵp. Maent yn dod o Fali, Llanddona, Benllech, ayyb.

Sefydlwyd y Bore Goffi yn dilyn gwneud newidiadau helaeth i'r Neuadd. Arianwyd cynllun gan Lywodraeth Cymru a chymerwyd at y gwaith gan bwyllgor gweithgar iawn o wirfoddolwyr. Yn dilyn dwy flynedd o waith caled, ailagorwyd y Neuadd yn 2008. Cyflogwyd Swyddog Marchnata am chwe mis gan Gyngor Cymuned Cwm Cadnant i ddiwallu gofynion derbyn y grant. Roedd briff y swyddog yn cynnwys sefydlu bore goffi a chreu cysylltiadau gyda sefydliadau lleol megis colegau/ysgolion/cymdeithasau er mwyn enhangu gorwelion, cyfathrebu a chydweithio er lles trigolion Llandegfan a'r cylch.

Bu saib ar y gweithgareddau yn dilyn Cofid ond mae'n dda dweud fod y bore goffi yn ffynnu unwaith eto ac rydym yn gallu croesawu aelodau hen a newydd yn wythnosol! Rydym hefyd yn ymuno ym moreau coffi'r eglwys Cymorth Cristnogol a chawsom fwynhau cinio Nadolig gyda'n. Mae'n gyfle ardderchog i rai sydd yn symud i'r ardal i gyfarfod rhai o'r trigolion ac hefyd yn ffordd o gael cwmniaeth os yn byw ar eich pen eich hun. D'oes dim swyddogion ond mae Trysorydd.

Llandegfan: Thursday Morning Crew Report

Siân Arwel Davies, Treasurer

Every Thursday morning, a crowd comes together at the Parish Hall in Llandegfan for a chat and a cuppa.



Rhai o'r criw yn mwynhau panad a baratoir gan rota o wirfoddolwyr
Some of the crowd enjoying their chat and cuppa prepared by a rota of volunteers
(Siân Arwel Davies)

There is a dedicated table for those who wish to practise their Welsh on a one-to-one basis or as a group. They come from Valley, Benllech, Llanddona, etc. The Coffee Morning was established following a programme of changes at the hall. This was financed through the Welsh Senedd, and the work was organised by a dedicated committee of volunteers. Following a two-year period of intense work, the Hall reopened in 2008. A Marketing Officer was

www.seiriolalliance.co.uk/newsletters/

employed by Cwm Cadnant Community Council to fulfil the criteria of receiving the grant. The brief included establishing a coffee morning and connecting with local colleges, schools, societies to expand horizons, communication and co-operation for the benefit of the local community in Llandegfan and the surrounding area.

Activities were halted following Covid, but I'm pleased to say that the coffee morning is thriving once more and we are able to welcome new members every week! We also join in with other activities such as the Church fairs, Christian Aid coffee mornings, and we enjoyed a Christmas dinner together. It's a great opportunity for meeting new people, especially for someone who has just moved to the area and for those who live alone. There are no officers other than a Treasurer.

• • • • • • • • • •

Merched y Wawr yn dathlu Gŵyl Dewi

Siân Arwel Davies, Trysorydd

Eleni, cawsom gwmni Cangen Porthaethwy yn ein dathliad a braf iawn oedd cael eu croesawu I Neuadd y Plwyf Llandegfan ar ddiwrnod hyfryd o Wanwyn.



Mr Tim Ward a disgyblion Ysgol David Hughes, gydag aelodau MyW tu ôl
Mr Tim Ward and Ysgol David Hughes pupils, with the MyW members behind (Siân Arwel Davies)

Dechreuwyd drwy ganu Cân y Mudiad i gyfeiliant Enid Griffiths ar y piano. Mae cysylltiad arbennig rhwng y dôn a changen Llandegfan gan iddi gael ei chyfansoddi gan Pencerdd Silyn, tad yr Athro. Hywel Wyn Owen sydd yn briod gyda Rhaiain, aelod ers sefydlu'r gangen.

Cawsom ein diddanu gan griw hynod ddawnus o Ysgol David Hughes dan arweiniad Mr Tim Ward.

Mwynhawyd rhaglen amrywiol o ddeuawdau, unawdau lleisiol ac offerynnol ac roedd yn amlwg fod y disgyblion i gyd wedi treulio amser yn mireinio'u talent. Roedd y gymeradwyaeth ar y diwedd yn adlewyrhu'r mwyniant a gafwyd.

Wedyn bu cymdeithasau dros y byrddau wrth fwynhau te pnawn yng nghwmni'r bobol ifanc cyn iddynt orfod troi yn ôl am yr ysgol. Ar ddiwedd pnawn cofiadwy
puffinpages@gmail.com

iawn aeth pawb ar eu ffordd yn llawen.

Fis nesa byddwn yn croesawu Rhian Medi dan arweiniad Nest a Wendy.

• • •

Merched y Wawr celebrating St David's Day

Siân Arwel Davies, Treasurer

This year, we enjoyed the company of the Menai Bridge Branch at the Parish Hall in Llandegfan on a fine afternoon in Springtime.

We started the celebration by singing the MyW Anthem, with Enid Griffiths accompanying. There is a special connection with the song and Llandegfan; It was composed by Pencerdd Silyn, father of Prof Hywel Wyn Owen whose wife Rhaiain is one of the founder members of MyW Llandegfan.

Then we were entertained by very talented pupils from Ysgol David Hughes under the direction of Mr Tim Ward. We enjoyed a varied programme of vocal and instrumental solos and duets and it was clear that the pupils had spent much time perfecting their talents. The applause at the end showed everyone's appreciation of the entertainment.

This was followed by afternoon tea with much socialising around the tables with the young people before they had to return to school. At the end of this very memorable afternoon, everyone happily went on their way.

Next month we will be welcoming Rhain Medi Bishop under the leadership of Nest and Wendy.

• • • • • • • • • •

Anglesey, trees, net zero...and Llangoed

Andrew Perrott

The text below is adapted from an article published by Isle of Anglesey County Council (IoACC) late last year about the growing of thousands of trees in our corner of Anglesey.



An aerial photograph of the gardens at Haulfre, looking downhill towards Llangoed (Isle of Anglesey CC)

It's an important project, not just for the environment and our lovely island, but also because the project is centred in Seiriol Ward, at Gerddi Haulfre in Llangoed.

IoACC is spearheading an innovative

project that will see thousands of trees grown at a new tree nursery at Gerddi Haulfre. It's being led by IoACC's AONB (area of outstanding natural beauty) Team, and will see approximately 10,000 native broadleaf trees being grown every year at Gerddi Haulfre. Funding for the tree nursery was secured from the Welsh Government's Sustainable Landscape Sustainable Places (SLSP) programme.

As part of the day-to-day running of the nursery, IoACC will work with a number of local community groups, education centres and clients at Blaen y Coed Resource Centre. The project will support IoACC's commitment to increase woodland planting, an objective that is set out in the new AONB Management Plan 2023-2028. Over time, the trees will make a positive contribution to the environment by removing carbon from the atmosphere, supporting IoACC's aim to achieve net zero status by 2030.

The project also supports the Well-being of Future Generations (Wales) Act 2015 by helping to improve the social, economic, environmental, and cultural well-being of Anglesey residents. The project will provide a significant number of trees for council and partner organisation projects over the coming years.

Positive community involvement is essential to this project's success, so IoACC is eager to get as many groups as possible involved in the project. If you'd like more information, e-mail the the AONB Team at aonb@anglesey.gov.wales.

Thousands of trees to be planted to boost Anglesey's net zero aim
www.anglesey.gov.wales/en/news-room/news/thousands-of-trees-to-be-planted-to-boost-angleseys-net-zero-aim

Miloedd o goed yn cael eu plannu i roi hwb i dargedau sero net Ynys Môn
www.ynysmon.llyw.cymru/cy/newyddion/newyddion/miloedd-o-goed-yn-cael-eu-plannu-i-roi-hwb-i-dargedau-sero-net-ynys-mon

Sustainable Farming Scheme
www.gov.wales/sustainable-farming-scheme

Well-being of Future Generations (Wales) Act 2015: the essentials
www.gov.wales/well-being-future-generations-act-essentials-html

• • • • • • • • • •

Beaumaris Rotary Hub is closing

Kevin Sivyver, Beaumaris Rotary Lead

After two years of existence, almost to the day, we are sad to announce that, due to the fact that the Rotary district in North Wales and North West England has decided recently to close all local

hubs, Beaumaris Rotary can no longer exist, as there are not enough members to form a traditional club.

We look back with pride on what has been achieved by a small but dedicated team, and are pleased to have supported a number of local organisations and charities, notable among which have been:

- The establishment of Autumn Arts, bringing together much of the local artistic talent, in support of Beaumaris RNLI, local Guides and schools
- The popular annual dog show in support of Guide Dogs and Hearing Dogs
- Obtaining grants for Seiriol Men's Shed, Llangoed, and part-funding for an information system in Beaumaris library
- Tree planting in Beaumaris school
- Assisting with the management and marshalling of various events, such as fireworks, road racing and Victorian Christmas.

Particular thanks are due to my fellow Rotarians Michael Davies, Michael Burkham and Robert Macaulay and to our many local businesses who have supported our events.

For myself, I am now a 'freelance' Rotarian, co-ordinating various local, national and international projects, in particular, revisiting a \$45,000 clean water supply project which I initiated in East Kenya.

Sincere thanks and best wishes!

On a personal note

After much thought, I have taken the decision to move back to my roots in Hampshire, mainly for family reasons, as the distance factor has become too demanding; I will have moved by the time you read this!

I have spent 24 years in the Principality, 22 very happily in South Wales and just over two in North Wales, mainly on Anglesey, and have much appreciated the beauty of the area and the support of the many volunteers in organisations with which I have become associated and will miss.

I am moving to another attractive part of the UK – to Southbourne, a small hamlet between Portsmouth and Chichester – with the South Downs to the north and Chichester harbour to the south. I shall continue my support of the RNLI there and rejoin a local sailing club, having enjoyed the fellowship and professionalism of the two organisations in Beaumaris. I shall also continue my commitment to Rotary and rejoin lifelong friends in music along the South coast.

I cannot close without mentioning the outstanding support of Andrew and **The Puffin's** Editorial Team and our

whirlwind Anglesey MP Virginia Crosbie who has supported so many of my local events in Beaumaris and achieved so much for Anglesey in general. I am sure she will go on to greater things locally and for Wales and deserves the fullest support.

In closing, I appreciate the many friendships formed in Beaumaris and take away many happy memories of my time here.



I wish everyone all health and happiness for the future.

- Kevin (and Meg 🐾)



Llangoed WI

Deborah Booth, Press Officer

Llangoed WI is a friendly group of ladies from Llangoed and the surrounding areas. We usually meet at 2.00pm on the first Wednesday of the month at the Village Hall in Llangoed, where we enjoy a variety of activities, including talks, crafts, music and games.

March: we had an excellent talk by Gareth Phillips on his involvement with Tools for Self Reliance Cymru, which takes old/broken tools, fixes them, and then takes them to rural areas in Africa.

April: for our St David's day meeting, we enjoyed hearing the amazing Threnody Singers, a bilingual choir who sing a collection of Welsh and English traditional songs and classic pop songs.

Activities: as well as our branch activities, Llangoed WI also get to enjoy the various events and courses put on by the Anglesey Federation, which usually take place at the WI Hall and Museum in Llanfairpwll, the home of the first WI in the UK. Additionally, WI members can access the WI Learning Hub, where they can choose from a wide variety of free courses.

Join us! If you think that you might be interested in joining our group, you are most welcome to come along to our meetings. You may come to three meetings free of charge to 'test the water', or speak to our Secretary, Catherine Sproston, who will give you more details.

☎ 07900 382200

📧 Tools for Self Reliance Cymru
www.tfsrcymru.org.uk

📧 The WI: Anglesey/Sir Fôn Federation
<https://anglesey-sir-fon.thewi.org.uk>

Cynghrair Seiriol Alliance:

newyddion 🌸

Steve MacVicar

Apêl Bws Mini: erbyn hyn rydym wedi codi dros £25,000, felly rydym yn ar ein ffordd!

Diolch yn fawr iawn i bawb sydd wedi cyfrannu.

Rydym wedi cael cyfraniadau gan gleientiaid unigol, ein gwirfoddolwyr a llawer o bobl leol eraill.

Sôn arbennig am y Gwesty Bull (£950), Neuadd Bentref Llangoed (£522), Capel y Drindod (£1,000) a'r Helfa Wyau Pasg Caffi Happy Valley/Janet Bell.



Cynghrair Seiriol Alliance: news

Steve MacVicar

Minibus Appeal: we have now raised over £25,000, so we're getting there!

A massive thank you to everyone who has contributed.

We have had contributions from individual clients, our volunteers and many other local people. Special mention to the Bull Hotel (£950), Llangoed Village Hall (£522), Capel y Drindod (£1,000) and the Happy Valley Café/Janet Bell Easter Egg Hunt (£645).

Clwb Bowlio Beaumaris Bowling Club

David Mathias

The new season started on Monday 8 April with a home fixture against the Benllech Bowling Club.

This season Beaumaris will have six teams competing in five different leagues:

- The Monday Night League
- The Gwynedd Vets Tuesday Afternoon League
- The North Wales Tuesday Night Super League
- The Wednesday Night League: two teams
- The North Wales Saturday Afternoon League

After playing on what was a substandard bowling green in 2023, the Club would like to extend its great appreciation to the new Greenkeeper, Barry Ward, on the excellent work he has done on the

(continued on page 16)

www.seiriolalliance.co.uk/newsletters/

WELSH ATHLETICS
ATHLETAU CYMRU

CANOLFAN
BEAUMARIS

**RASYS HWYL, HANNER MILLTIR,
MILLTIR, 10K A HANNER MARATHON**

Bydd angen i bob plentyn gofrestru cyn y digwyddiad.
Archebwch le yn fuan i sicrhau lle!

**GŴYL RHEDEG
BIWMARES | NEPTUNE
FISH & CHIPS** **2024**

GWYL RHEDEG I BLANT (3-12 OED) AC OEDOLION YM NGHASTELL HANESYDDOL BIWMARES!
DYDD SADWRN 21ain & SUL 22ain MEDI

POB RAS YN GORFFEN TU MEWN I GASTELL BIWMARES!

MEDALAU I'R
HOLL REDWYR

GWOBRAU I'R 3 CYNTAF
YM MHOB CATEGORI

ADLONIANT A LLUNIAETH
AR GAEL AR Y DIWEDD

RASYS PLANT £7
10K OEDOLYN £27
(yn cynnwys crys-TI)
1/2M OEDOLYN £35
(yn cynnwys crys-TI)

YMWELWCH Â
www.tdlevntservices.co.uk
AM FANYLION LLAWN

BEINGWYD GAN:

ION ACTIF | Neptune Fish & Chips | GO | Cadw

BYDD YR HOLL ARIAN
A GESGLIR YN MYND
I ELUSENNAU LLEOL.

BEAUMARIS

FFIONIWCH/PHONE
01248 811200
I ARCHEBU/TO BOOK

CHWARAEON FFITRWYDD GEMAU CREFFTAU
SPORTS FITNESS CRAFTS GAMES

**GWERSYLL DYDD
DAYCAMP**

CRONFA
GYMUNEDOL
COMMUNITY
FUND

AGE 5-11 OED
9-5PM

YouTube | Instagram | Facebook | CIMSPA CHARTERED FELLOW



★ ★ ★ ★ ★ ★ ★ ★ ★ ★

Gwersyll Dydd yr Haf
22 Gorffennaf-30 Awst

★ ★ ★ ★ ★ ★ ★ ★ ★ ★

Summer Day Camp
22 July-30 August

★ ★ ★ ★ ★ ★ ★ ★ ★ ★

CYNGHRAIR SEIRIOL ALLIANCE
CYNLLUN TRO DA SEIRIOL
GOOD TURN SCHEME

Cyngirair Seiriol Alliance



Thank you

APÊL BWS MINI! *Diolch!*
MINIBUS APPEAL!

£45,000

I roi rhodd / To donate
(01248) 305014
arlein / visit bit.ly/BWSMINI
www.seiriolalliance.co.uk/making-a-donation

Charity number: 1192222

WELSH ATHLETICS
ATHLETAU CYMRU

CANOLFAN
BEAUMARIS

**FUN RUN, HALF MILE, ONE MILE,
10K AND HALF MARATHON**

All children and adults need to enter in advance
Book soon to secure a place!

**NEPTUNE | BEAUMARIS
FISH & CHIPS | RUNFEST 2024**

RUNNING FESTIVAL FOR CHILDREN (3-12 YRS) AND ADULTS IN HISTORIC BEAUMARIS
SATURDAY 21st & SUNDAY 22nd SEPTEMBER
ALL RACES FINISH INSIDE BEAUMARIS CASTLE!

MEDALS FOR ALL RUNNERS
PRIZES FOR TOP 3 IN EACH AGE CATEGORY
ENTERTAINMENT & REFRESHMENTS AT THE FINISH

CHILDREN'S RACES £7
ADULT 10K £27
(includes T-shirt!)
ADULT 1/2M £35
(includes T-shirt!)

PLEASE VISIT
www.tdlevntservices.co.uk
TO ENTER AND FOR FULL DETAILS

EVEN SUPPORTED BY:

ION ACTIF | Neptune Fish & Chips | GO | Cadw

ALL MONIES RAISED
GO TO LOCAL CHARITIES

(from page 14)

green over the winter months, which hopefully will make it once again one of the best Bowling Greens in the League.

The Club is holding a Fundraising Bingo Night on Thursday 2 May at the Bulkeley Arms in Menai Bridge, starting at 8.00pm. Any prizes for the Raffle or donations would be greatly appreciated.



As smooth as a...bowling green!...the result of Barry Ward's hard work (David Mathias)

The Club would welcome new members of any gender or age. If you're interested, please contact me.

If you'd like to just have a social game of bowls, you can become a Social Member of the Club, by hiring bowling equipment from the Pavilion Café and if you wish, join with the "Last of the Summer Wine", Social Bowling Group which meets up on Monday mornings at the Happy Valley Bowling Green, for a game, coffee, cake and a chat.

✉ davemathias49@gmail.com

☎ 01248 490222, 07712 121147

📧 Beumaris Bowling Club
<https://beumarisbowlingclub.yolasite.com/>

📧 Beumaris Bowling Club
www.facebook.com/people/Beumaris-Bowling-Club/100063490482942/

• • • • • • • • • • Gwobr Rheolaeth Gymunedol Genedlaethol ar gyfer

Rhandiroedd Biwmares 🌸

Jonathan Keymer

Bore mercher y 13^{eg} Fawrth, Sally Quest, Ann Bailey-Maddox a fi goroeson y glaw a'r niwl i gyrraedd Y Plas ym Machynlleth mewn pryd i'w ymuno â 50 garddwyr a threfnwyr prosiectau cymunedol o bob gornel o Gymru. Mewn glaw trwm aeth y tri ohonon ni ar daith o amgylch "Edible Mach Maethlon", prosiect cymunedol sy'n rhoi mynediad i gynnyrch iach i bobl leol.

Ymlith yr uchafbwyntiau oedd nifer o nodweddion creadigol: Twnnel Tastus, Bwrdd Maethlon Awyr Agored, Cylchoedd Cnydau a Rhandir Arddangos. Mae'r prosiect yn dibynnu ar arian loteri genedlaethol a chymorth o busnesau ac archfarchnadoedd lleol.

Hoffen ni yn arbennig eu defnydd o "warchodwyr gwelyau", gwirfoddolwyr lleol sy'n cymryd cyfrifoldeb am welyau unigol neu nodweddion eraill.

I ginio aethon ni i mewn i neuadd fawr yn Y Plas, adeilad 350 mlwydd oed, ac ymunon ni â VC Gallery, prosiect yn Hwlffordd sy'n cefnogi cyn-filwyr ac eraill yn ar ardal sy'n goresgyn trawma ac unigrwydd. Roedd gan pob un gefndir milwrol eu hunain a fel y gallwch chi ddychmygu roedd y sgwrs yn ddyrchafol ac yn llawn jôcs a fyddai wedi tynnu sylw sensoriaid 'poor taste'. Roedd y bwyd yn ddetholiad o gawliau a brechdanau a ddarparwyd gan gwmni arlwygo lleol sy'n defnyddio cynnyrch a dyfir yn lleol yn unig. Yr un baba ganoush ar fara gwenith cyflawn oedd fy hoff.



L-R: Sally Quest, Huw Richards, Ann Bailey-Maddox, Jonathan Keymer (Sally Quest)

Llywyddwyd y seremoni wobrwyo CLAS (Ffermydd a Gerddi Cymdeithasol) gan Huw Richards, garddwr ifanc o ganolbarth Cymru efo miliwn o danysgrifwyr YouTube. Rhannwyd y gwobrau yn bedwar rhanbarth: Gogledd, Canolbarth, De-ddwyrain a De-orllewin. Cyn i ni fynd i fyny i gasglu ein gwobrau, dangoswyd ein ffilmiau byr am ein prosiectau ar sgrin fawr. Roedd gymaint o syniadau gwych gan y prosiectau eraill y gallwn eu hymgorffori yn eu plot cymunedol. Fedrwch chi weld y holl ffilmiau ar y tudalen YouTube 'Social Farms & Gardens'.

Cafodd ein ffilm dderbyniad da, roedd Huw wrth ei fodd efo ein gwinllan. Tystysgrif, plac pren hyfryd a chopi wedi ei arwyddo o lyfr newydd Huw, *The Self-sufficiency Guide*, oedd y wobrau.

I gloi, wnaeth y tri ohono ni fwynhau'n fawr y diwrnod. Ar y ffordd adra, llawer o syniadau ei trafodwyd ar gyfer ein plot cymunedol. Mae'r tymor tyfu newydd yma eto a mae llawer i'w wneud. Gobeithio fydd y Cyngor yn cadarnhau ein cymorth ariannol i'r blwyddyn nesaf a fedrwn ni archebu y pethau sydd eu hangen arnon ni ar gyfer ailnewydd a gwella hygyrchedd ar y plot.

Os hoffech chi wirfoddoli yn un o'n partion gwaith sydd ar ddod, fedrwch chi yrru ebost aton ni neu ffonio fi, Jon Keymer.

✉ Beumaris Allotments Society
beumarisallotmentsociety@outlook.com

☎ 07583 252021

📺 YouTube: Social Farms & Gardens
www.youtube.com/channel/UCc94Jo3KyOlexYOy0B_ucw



A National Community Management Award for Beumaris Allotments

Jonathan Keymer

On Wednesday 13 March, Sally Quest, Ann Bailey-Maddox and I made it through the rain and mist to arrive at Y Plas in Machynlleth in time to join around 50 other gardeners, allotmentees and other community project organisers from all corners of Wales. In heavy rain, the three of us joined the pre-lunch tour of "Edible Mach Maethlon", a community-led project that provides access to healthy home-grown produce for the town inhabitants. Among the highlights from many inspired features were: Tasty Tunnel; Outdoors Edible Table (where a young apple tree grows through the centre of a large picnic table that also includes miniature herb planters); Crop Circles; and the Show Allotment. The project relies upon National Lottery funding topped up with support from other local businesses and supermarkets. One idea that we thought particularly interesting was the use of "bed guardians", local volunteers who take responsibility for individual beds or features within the project.

For lunch we entered a large hall within the 350-year old Y Plas building and joined a table with four members from VC Gallery, a community project in Haverfordwest aimed at supporting military veterans and others from the local area in overcoming trauma and loneliness. Each had a military background and, as you may imagine, the conversation was uplifting and full of humour, much of it at risk of involving the 'poor taste' sensors. The food was an array of different soups and sandwiches provided by a local catering company that uses only locally grown produce. I particularly enjoyed the baba ganoush on wholemeal loaf.

The CLAS (Social Farms and Gardens) prize-giving that followed lunch was hosted by Huw Richards, a young raised-bed gardener from mid-Wales and something of a social media sensation with around a million subscribers to his youtube channel. The prizes were divided into four sections based on Wales' geography: North, Mid-Wales, South-east and South-west. Before each project went up in turn to

(continued on page 18)

Eight days of culture and creativity!

Get ready to immerse yourself in celebrating eight days of culture and creativity at the 2024 Gŵyl Beaumaris Festival!

Youth and Music

The Festival features three outstanding pianists:

- Iyad Sughayer: his enchanting renditions of Mozart grace the stage, including the beloved *Rondo alla Turca*.
- Emerging Welsh pianist, Tomos Boyles, showcases his versatility, with works from France, Germany, and Poland.
- Festival favourite, Ellis Thomas, plays Mozart's 27th *Piano Concerto, K.595*, with the Welsh Chamber Orchestra.

In association with the Royal Welsh College of Music and Drama, the Bute Wind Quintet make their festival debut, enchanting audiences with a diverse repertoire spanning Brahms to Nino Rota, and students of Canolfan Gerdd William Mathias showcase their promising talents.

Choral Concert: Mendelssohn's Elijah

Be moved by Cantorion Menai, one of Wales's foremost choirs, conductor Gwyn L Williams.

There's a stellar line-up: Steffan Lloyd Owen, Meinir Wyn Roberts, Jenny Pearson and Bryn Roberts, with Bangor Symphony Orchestra Cerddorfa Symffoni Bangor.

Two contrasting operas

- *Orlando* by Handel, Wales's most-loved composer, is performed by the innovative Liberata Collective with authentic instruments and singers using 18th century gestures.
- *Horizon-Madog*, a Canadian-Welsh première: Paul Frehner's futuristic opera is set in a world ravaged by climate change.

A Québécois descendent of Madog ap Owain Gwynedd, the prince who sailed to the Americas in 1170, longs to return from what remains of Québec to find what remains of Wales, his ancestral country, in the hope of re-establishing connections between the peoples of the two lands.



Iyad Sughayer

The visiting Canadians' varied programme includes Claire Victoria Roberts's *Tyged yr Iaith* and William Mathias's *Flute Sonata*.

Anglesey Accolade: Trio of Talents

- The Festival Artist is Lyn Grant from Beaumaris.
- Linguistics guru, David Crystal from Holyhead, with Ben Crystal, discusses Shakespeare on Love.
- A 90th anniversary tribute features composer William Mathias, a long-term Menai Bridge resident, with the final concert featuring the Alvor Trio playing his *Zodiac Trio*.



Cabaret and Ballroom Jazz

- Welsh jazz harpist Ben Creighton-Griffiths opens the festival in the Bulkeley Hotel ballroom.
- Virtuoso guitarist Will Barnes plays a Saturday Night Cabaret of jazz standards and his own music with his quartet.

Two festival debuts not to be missed!

Band and Orchestra

- The top Welsh Seindorf Beaumaris Band plays Glenn Miller and Johann Strauss hits.

The last-night orchestral concert includes a première by Alex Mills sung by Jeremy Huw Williams who, earlier that day, performs music by Fauré and Mathias with pianist George Ireland. Ellis Thomas plays Mozart's exuberant last piano concerto, with Anthony Hose conducting the Welsh Chamber



Bute Wind Quintet

Orchestra in masterworks by Haydn and Tchaikovsky.

The Festival line-up

Wednesday 22 May

- Jazz at the Bulkeley: Ben Creighton-Griffiths.

Thursday 23 May

- Festival Talk 1: Remembering Will.
- Opening of the Art Exhibition: Lyn Grant.
- Mewn Cymeriad: Thomas Telford.
- Band Concert: Seindorf Beaumaris Band.

Friday 24 May

- Young Artist Series: Iyad Sughayer.
- Festival Talk 2: Shakespeare on Love.
- Choral Concert: Mendelssohn's Elijah.

Saturday 25 May

- Young Artist Recital 2: Tomos Boyles.
- Young Artist Recital 3: The Bute Wind Quintet.
- Jazz Cabaret: The Will Barnes Quartet.

Sunday 26 May

- Choral Evensong.
- From Canada with Love

Monday 27 May

- Young Musicians Showcase.
- Handel's Orlando.

Tuesday 28 May

- Anniversary Song Recital.
- Orchestral Masterworks: Welsh Chamber Orchestra.

Wednesday 29 May

- The Alvor Trio.

Booking

In person at

Canolfan Hamdden Beaumaris
Leisure Centre
Rating Row
Beaumaris
Anglesey
LL58 8AL

By telephone on:

01248 811200
Monday-Saturday
11.00am-3.30 pm

On-line at:

www.beaumarisfestival.org



Liberata Collective

(from page 16)

collect their award from Huw, their short video was played on a large screen. There were so many wonderful ideas among these that I'll be reviewing each one again to see which elements we could incorporate into our community plot. You may view the videos on the Social Farms & Gardens YouTube page.

I'm pleased to report that our video was well-received, with Huw particularly impressed by our vineyard. The prize consisted of a certificate, a lovely wooden plaque and a signed copy of Huw's new book, *The Self-Sufficiency Guide*.

All in all, the three of us thoroughly enjoyed our day. On the way home we discussed many ideas for the community plot. The new growing season is upon us again and much work lies ahead. Hopefully, it won't be long before the Council confirms our funding for the new financial year and we can order the materials we need to renovate and improve accessibility on the plot.

If you would like to volunteer at one of our upcoming work parties, please e-mail Beaumaris Allotments Society or telephone me, Jon Keymer.

✉ Beaumaris Allotments Society
beaumarisallotmentsociety
@outlook.com

☎ 07583 252021

📺 YouTube: Social Farms & Gardens
www.youtube.com/channel/UC
c94Jo3KyOlexYOy0B_ucw

May Blossom's Garden

May Blossom

St Fiacre has decided to take a back seat, so I've stepped into the breach.

What a stormy breach it's been: several named storms, and rain, more rain, and so much wind!

May

The risk of frost is probably over, allowing you to harden off and plant out tender crops and plants raised under cover. As the soil starts to warm, seeds sown directly into the soil will germinate quickly, but pests are active now as well, so take precautions and check plants for early signs of damage.

The flower garden:

- Keep borders weed-free.
- Hoe preferably on a dry day so that the weeds will wither and die when cut off.
- Cut down or lift daffodils and tulips and plant in a spare corner of the garden.
- Mow the lawn and trim grass edges of borders.
- Check roses for blackspot/mildew

The Puffin 48 • May 2024

and spray if necessary.

- Water greenhouse plants, preferably in the morning; you may need to water twice in very warm weather. It is helpful to dampen the greenhouse floor to keep it humid. Use shade netting if necessary.
- Ventilate the greenhouse.
- Water newly-planted trees and shrubs well during dry spells, and add a layer of mulch to help water retention in the soil.
- Stake and support herbaceous perennials where necessary.
- Towards the end of the month start planting containers, hanging baskets and summer bedding. Remember to acclimatise the plants slowly for at least a week before planting outside.
- The 'Chelsea chop' can be undertaken around the end of May; this is a way of pruning herbaceous/perennial plants to encourage bushier plants and more flowers.
- Early flowering clematis (such as *montana*) can be trimmed and cuttings taken after flowering.
- Towards the end of the month plant dahlias and take cuttings of their young shoots.
- Plant hardy chrysanthemums.
- Clean patio/paving and garden furniture so that you are ready for a relaxing time in the garden.

The vegetable and fruit garden:

- Lay straw around strawberry plants and check for slugs. As strawberry plants last for only c.3 years this is a good time to propagate by layering. As the runners are beginning to form fill an 8cm/3" pot with good compost. Lay the runner across the compost in pot and secure with a bent piece of wire.
- Thin out developing gooseberries to encourage larger berries.
- Mulch fruit bushes.
- When planting tomato plants in greenhouse use canes or secure one end of the support string under its root ball and tie to glazing bar. Remember to remove side shoots. Water regularly as irregular watering will cause blossom end-rot or fruit splitting. Feed with soluble water fertiliser and spray for white fly as needed.
- Earth up potatoes as they grow to encourage extra tubers and stop them from going green.
- Complete the sowing of French beans, runner beans, broad beans, beetroot, carrots, cauliflower, broccoli, peas, parsnips, spring onions, leeks and swedes.

June

June brings us the longest day. Borders are awash with flowers, with plenty to come. Strawberries have started,

raspberries are on their way and the vegetable plot is at its most mouthwatering.

The flower garden:

- Continue to stake perennials as the plants grow.
- Deadhead roses at the first leaf below the old flower.
- Water plants in the greenhouse in a morning. On warm days you may need to water twice. I've found that dampening the floor down to be effective.
- Water pots and containers frequently in hot weather and soak them in a tub of water if they've been allowed to become over-dry.
- Continue to keep lawn and borders tidy.
- Slugs can be a problem especially in herbaceous borders and shady corners. If you don't want to use slug pellets there are alternatives, such as surrounding plants with sharp sand, ash or grit. You can drown them in beer! To make a beer trap sink a bowl rim deep into the ground and fill with beer. Cover from rain while leaving access for slugs. Empty the bowl regularly and replenish. What a way to go!
- As most of the sowing and planting has now been done concentrate on keeping the garden looking neat and tidy. Weeds will germinate rapidly so continue to hoe beds and borders.
- Trim spring flowering alpines such as aubrieta and alyssum to make them more compact as they become bare in the centre.

The vegetable and fruit garden:

- Cover plants or bushes with netting to stop birds eating your soft fruit.
- Check broad beans against aphids. If you haven't done so already pinch out the top 8cm/3" of the stem as soon as the first beans start to form. This will ensure an earlier harvest and also provide some degree of blackfly control. Spray if attacks persist. A tip: after cropping has finished, dig the plants into the soil to provide valuable green manure.

July

July is the most colourful month in the garden, with plants flowering and growing strongly, crops ready to harvest and borders at their peak. The long warm and sunny days allow more time to be spent in the garden, although dry spells mean regular watering.

The flower garden:

- Tidy borders by dead-heading and cutting back plants that have passed their best.
- Hydrangeas require plenty of water in dry weather.
- Weed rockeries and trim plants to

www.seiriolalliance.co.uk/newsletters/

- keep them in shape.
- Fill gaps in border with container-grown plants.
- Thin michaelmas daisies and look out for mildew.
- Feed dahlias and fuchsias.
- Continue to mow lawns and edge borders.
- Plant spring-flowering spring bulbs in the rockery.
- Support climbing and herbaceous plants.
- Apply fertiliser to lawns.
- Take cuttings of penstemon, fuchsias, pelargoniums and salvia; see the following article.

The vegetable garden:

- Harvest vegetables regularly and water often to prevent them deteriorating in the ground.
- Beware cabbage white butterflies as they can devastate cabbages and related crops.
- Water courgettes to encourage a good crop.

Taking cuttings of tender

perennials

May Blossom

Most penstemons, fuchsias, pelargoniums and salvias are tender perennials. Taking cuttings will allow you to keep the young plants under cover and safe from frost.

Look for non-flowering shoots and take semi-ripe wood cuttings in July and plant them out in the spring.

Semi-ripe cuttings are so-called because the base of the cutting is woody and the tip soft:

- Cut off some non-flowering healthy shoots early in the day when they are full of sap, and place them in a plastic bag filled with a little water to keep them fresh.
- Trim each shoot so that it is c.8cm-10cm/3"-4" long, or slightly longer if the plant has large leaves.
- Remove the main growing tip and trim the base of the stem just below a leaf joint.
- Nip off the lowest leaves with a sharp knife to create some bare stem to ease into the compost, aiming to leave 4-6 leaves per cutting. Dip the bare base of the cutting into rooting powder, making sure that the cut is properly covered as this should help it to root more quickly; gently tap the cutting to shake off any excess powder.
- Make a hole with a pencil and insert the cutting into a pot of moist cutting compost (preferably half compost/ half perlite or grit).
- Add more cuttings around the rim of the pot and cover with a clear plastic bag.

- Place the pot in a cool light spot away from direct sunlight.
- Keep the compost moist and the cuttings should have rooted by autumn.

Here's a tip: pull the cuttings lightly to check that they have rooted.

With salvia cuttings why not try dispensing with the pot of compost and placing the cutting directly into a jar of water? After 2-3 weeks roots should appear and when they reach about 4cm-5cm in length the cutting can be potted up.

Tocio neu beidio tocio? 🌸

Lucy Low

Unwaith eto beth ydw i wedi cytuno iddo? Ond sut allai ddweud na wrth yr hyfryd Mavis Bishop a swyn perswadiol Andrew Perrott.

Mae Mark yn fy nigalonni a ddim yn hollol siŵr beth sy'n mynd ymlaen; mae bod yn ffermwr sy'n garddio o amgylch y ffermdy yn swydd gwbl amherthnasol. Rhoddwch iddo 100 erw a bydd yn aredig am oriau maith, ym mhob tywydd, hyd nes y bydd ganddo drwch mân at dyfu cynydau o wahanol fathau. Bydd yn archwilio ei gaeau drwy gydol y flwyddyn am blâu a chlefydau, ac yn gwyllo'r tywydd yn frwd ac yn trafod cynydau, cynaeafau, methiant cynydau, yn wir unrhyw sefyllfa o gwbl gyda ffermwyr cyfagos yn ddiwedd, ond soniwrch am yr ardd ac mae'n awgrymu slabiau palmant.

Beth bynnag ar ôl ildio i Ddiwrnod Agored Gardd Llanddona NGS ar 13 Gorffennaf 2024 fe ddechreuais i mewn hwyliau da a thocio a snipio'n egniol ddiwedd y llynedd. Yna daeth y panig i mewn efallai oherwydd ei bod yn ardd wal, bob tro dwi'n tocio planhigion maen nhw i weld yn llawenhau ac yn tyfu eto, nid dyna dwi eisiau! Byddant i gyd ar eu brig yn rhy fuan!

Bob tro dwi'n edrych allan drwy'r ffenest, dwi mewn penbleth; mae'n rhy wlyb i weithio, rhy oer, rhy dywyll, yn amser wyna, rhy flinedig! Neu mae'n amser swper, gallwn i fynd ymlaen!

Y cyfng-gyngor yw sut ydych chi'n sicrhau bod popeth, fy holl rosod hardd mewn, cyflwr brig am un diwrnod yn unig sef, 13 Gorffennaf 2024? Ddim un diwrnod ynghynt neu'n hwyrach? Rwyf hyd yn oed wedi ystyried ymweld â'r ganolfan arddio i wario swm mawr o arian yr wythnos sydd yn dechrau 8 Gorffennaf i greu rhith parod ond rwy'n ofni y bydd y garddwriaethwyr dysgedig ymhlith yr ymwelwyr yn fy aghanfod.

Mae Tomos yn garedig wedi awgrymu 'Bwrdd Hwyliau' gan mai dyma'r ffordd ffasiynol i symud ymlaen. Fy hwyliau yn mynd i fyny ac i lawr yn amal, a yw'n goch ar gyfer fy geums hyfryd ynteu'n

goch am gynddaredd at y gwllithod goresgynol a malwod? Du am smotiau duon ar fy rhosod neu gymylau glaw sy'n fygythiol? Neu siawns cosmos siocled yn ei flodau...



Y 'Bwrdd Hwyliau'
The 'Mood Board'
(Tomos Griffiths)

Mae gennyf hefyd rai cerrig pensaernïol diddorol yn cael eu harddangos a allai fod yn bleserus gan y dorff ac rwy'n mawr o beithio y byddaf yn cael cynnig lluniaeth. Dwi'n gwybod sut i wneud paned dda o de a choffi, ac y bydd fy nghacennau sbwng (wedi'u gwneud a wyau fferm ffres Tom) yn codi i'r achlysur, ac mae Tom wedi cynnig agor ei siop fferm a rhoi elw y diwrnod i'r NGS, felly efallai y byddwn yn dianc heb neb yn edrych yn rhy agos ar y border!



To prune or not to prune?

Lucy Low

Once again, what have I let myself in for? But who could say no to the delightful Mavis Bishop and the persuasive charm of Andrew Perrott.

Mark is despairing of me and not wholly sure what is going on; being a farmer, gardening around the farmhouse is a completely irrelevant job. Give him 100 acres and he will plough and till all hours, in all weathers until he has a fine tilth for growing crops of different varieties. He will check his fields throughout the year for pests and diseases and will watch the weather avidly and discuss crops, harvests, crop failures indeed any situation at all with neighbouring farmers until the cows come home, but mention the garden and he suggests paving slabs.

Anyhow, having succumbed to the NGS Llanddona Garden Open Day on 13 July 2024 I started off in high spirits and pruned and snipped with vigour at the end of last year. Then the panic set in; maybe it's because it's a walled garden, every time I prune plants they seem to rejoice and grow again, that's not what I want! They will all peak too soon!

Every time I look through the window, I'm in a dilemma, it's too wet to work, too cold, too dark, its lambing time, I'm too tired! Its supper time, I could go on!

The dilemma is how do you ensure that everything, all my beautiful roses, are in peak condition for one day only, 13 July

(continued on page 22)



**Canolfan
Biwmares**

MWY NA CHANOLFAN

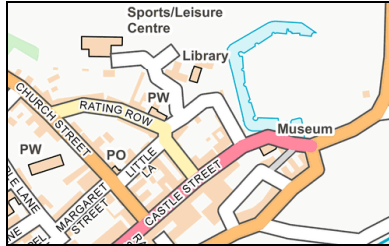
HAMDDEN YN UNIG

SIOEAU A DIGWYDDIADAU



- **Noson Meic Agored** •
11 Mai
- **Twrnament Bocsio MMA** •
18 Mai
- **Gŵyl Beaumaris Festival** •
23-29 Mai
- **Bingo Rêf** •
31 Mai
- **Cyngerdd Haf Seindorf Beaumaris Band** •
13 Gorffennaf

RYDYM YMA!



**Canolfan Biwmares, Rating Row,
Biwmares, Ynys Môn LL58 8AL**
Mwynhewch eich ymweliad!

LLE CROESO CYNNES

Te, coffi a chacennau!
Ymhlith y gweithgareddau mae peintio
cerrig mân, ffeltio, potiau atgofion a
llawer mwy

Bob dydd Gwener
1.00yp-3.30yp

Rhyddhewch eich ochr crefftus!

Paned a Sgwrs

i ddsygwyr Cymraeg
bob dydd Gwener
11.30yb-12.30yp

NOSON FFILM BIWMARES



Dydd Iau cyntaf o bob mis
Gweler y dudalen 6
7.00yp, £5.00 y pen



Ystafell ffitrwydd, chwaraeon, dosbarthiadau
ffitrwydd, campfa merched yn unig,
arddangosfa gelf, llogi beiciau, nosweithiau
ffilm, adloniant, cerddoriaeth fyw, partiön
plant, llafnrollo, marchnad rad, ffair hen
bethau, digwyddiadau, dawnsio a llawer mwy!

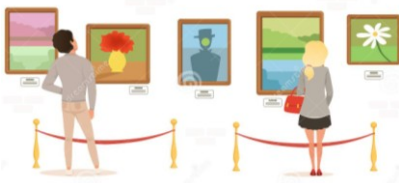
FFAIR HEN BETHAU



Trydydd Sul y mis

ARDDANGOSFA GELF

Ar agor i'r cyhoedd



Ar lunydd newydd bob mis
Yn rhad ac am ddim

**CANOLFAN
LLES SEIRIOL**

gan gynnwys

- Dosbarthiadau ffitrwydd •
 - Tai chi •
 - Aciwbigo •
 - Podiatrig •
- Therapiau holistaidd •
- Ymwybyddiaeth ofalgar •
- Osteopathi •



**Cysylltu â ni
os hoffech
mwy o wybodaeth**

**Ein manylion
yn cael eu rhoi isod**

LLOGI BEICIAU

Beiciau pedal neu drydan i oedolion a
phlant ar gael i'w llogi am ddiwrnod
llawn neu hanner diwrnod



- mae prisiau'n amrywio •

**GWEITHGAREDDAU
CYMUNEDOL**

gan gynnwys

Dosbarthiadau cyfrifiadurol • Clwb bridge
Grwp celf • Grwpiau crefft



Bore coffi • Sgyrsiau

STWFF IW WNEUD

...i blant cŵ!...

- Sgleffrwyddio •
Dydd Iau 5.45yp-7.15yp
 - Badminton i blant •
Dydd Iau 4.30yp-5.30yp
 - Pickleball y teulu •
Dydd Mawrth 5.00yp-6.00yp
 - Disgo Rholer •
Dydd Sadwrn 10.00yb-11.15yb
 - Crefftau Ymladd •
Dydd Mercher, dydd Gwener
4.30yp-6.30yp
 - Disgo Rholer yn eu Harddegau •
6.00yp-8.00yp
- 4 Mai; 8 & 29 Mehefin; 27 Gorffennaf

☎ 01248 811200

✉ enquiries@canolfanbeumaris.org.uk

🌐 www.canolfanbeumaris.org.uk/

🌐 www.facebook.com/canolfan.beumaris.7/



**Canolfan
Beaumaris**

MORE THAN JUST

A LEISURE CENTRE

SHOWS AND EVENTS



- **Open Mic Night** •
11 May
- **Boxing MMA Tournament** •
18 May
- **Gŵyl Beaumaris Festival** •
23-29 May
- **Rave Bingo** •
31 May
- **Seindorf Beaumaris Band Summer Concert** •
13 July

WE ARE HERE!



**Canolfan Beaumaris, Rating Row,
Beaumaris, Anglesey LL58 8AL**

Enjoy your visit

WARM WELCOME SPACE

Tea, coffee and cakes!
Activities include pebble painting,
felting, memory pots and
much, much more

**Every Friday
1.00pm-3.30pm**

Unleash your crafty side!

Cuppa and Chat

for Welsh learners
every Friday
11.30am-12.30pm

BEAUMARIS FILM NIGHT



The first Thursday of the month
See page 6

7.00pm, £5.00 per person



Fitness suite, sports, fitness classes,
ladies-only gym, art exhibitions, bike hire,
film nights, entertainment, live music,
kids 'parties, rollerblading, flea market,
antiques fair, events, dancing
and much more!

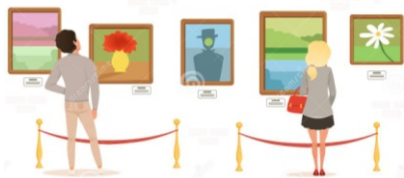
ANTIQUES FAIR



The third Sunday of the month

ART EXHIBITION

Open to the public



New artist each month
Free of charge

**CANOLFAN SEIRIOL
WELLNESS CENTRE**

including

- Exercise classes •
- Tai chi •
- Acupuncture •
- Podiatry •
- Holistic therapies •
- Mindfulness •
- Osteopathy •



**Contact us
if you'd like
more information**

**Our details
are given below**

BIKE HIRE

Adults' and children's bikes, pedal or
electric, available for full-day
or half-day hire



• prices vary •

**COMMUNITY
ACTIVITIES**

including

Computer classes • Bridge club
Arts group • Craft groups



Coffee morning • Talks

STUFF TO DO

...for cool kids!...

- **Skateboarding** •
Thursday 5.45pm-7.15pm
- **Kids' badminton** •
Thursday 4.30pm-5.30pm
- **Family Pickleball** •
Tuesday 5.00pm-6.00pm
- **Roller Disco** •
Saturday 10.00am-11.15am
- **Martial Arts** •
Wed & Fri 4.30pm-6.30pm
- **Teenage Roller Disco** •
6.00pm-8.00pm
4 May; 8 & 29 June; 27 July 27

☎ 01248 811200

✉ enquiries@canolfanbeaumaris.org.uk

🌐 www.canolfanbeaumaris.org.uk/

🌐 www.facebook.com/canolfan.beaumaris.7/

(from page 19)

2024? Not a day earlier or later? I have even considered a visit to the garden centre to spend a large amount of money the week beginning 8 July to create an instant illusion, but I'm afraid the canny horticulturalists amongst the visitors will rumble me.

Tomos has kindly suggested a 'Mood Board', as this is the trendy way to move forward. My mood is very up and down, is it reds for my lovely geums or red for rage at the invading slugs and snails? Black for black spots on my roses or rain clouds that are threatening? Or the chance of a chocolate cosmos in flower...

I also have some interesting architectural stones on display which could be a potential crowd pleaser and I am seriously hoping that I will be allowed to offer refreshments. I do know how to make a good cup of tea, coffee, and that my sponge cakes (made with Tom's fresh farm eggs) will rise to the occasion and Tom has offered to open his farm shop and donate the proceeds on the day to the NGS so we may just get away with no one looking too closely at my borders!



Nature notes: toads

Roz Hattey

Toads still have a negative image with some people.

Sometimes these harmless animals evoke disgust, even fear. These responses date back centuries, becoming part of our folk culture, some of which is quite well documented, including an association of toads with witchcraft.

Fortunately, nowadays, there are many other people who find toads fascinating and want to help protect them. 'Toad patrols' have been set up all over the country to help ensure that as many as possible of the large numbers of toads involved in the annual spring migration arrive safely at their breeding ponds.

The conservation group Frogwatch advises and encourages enthusiastic volunteers to put up signs and to stand outside with torches on suitable nights in March along roadside verges where toads are known to cross every year en route to regular breeding ponds. They encourage traffic to slow down and will sometimes pick up toads, put them in buckets and take them safely to the other side of the road.

It's early March as I write this, and every morning I am looking eagerly into my ponds to see if there are any signs of the long gelatinous threads of eggs that would tell me toads are spawning here at last. Adult toads have been seen in my garden most years since I moved up

to Llanddona sixteen years ago, sometimes near the ponds but also occasionally hiding amongst damp compost in an open sack near the house.

Last year, a friend who helps me in the garden was excited to find not only the usual two or three large, adult toads but also some smaller, immature animals



24 July 2023: this common toad was comfortable among the sacks of coal in a Llanddona garage...



12 September 2023: ...and this one seemed intent on coming into the house...

amongst the long grass he was about to strim in late summer. He left that area uncut till late autumn but before then we were both delighted when he also found some really tiny toads in the same patch of uncut grass.

No bigger than your thumbnail, these could not have been more than a year old and might well mean that toads are actually breeding in my large pond, which is about a metre deep in the centre. Toads tend to seek out larger and deeper ponds and lakes, unlike frogs, which prefer to lay their spawn in shallow water.

Rules, we often say, are made to be broken, and it seems this can also apply to natural 'rules'. This really means, of course, that we still have a lot to learn about animal behaviour. Relating to toads, it seemed extraordinary that scores of toads (one year I estimated there were well over 60) were breeding in a very small garden pond in Glanrafon. It was originally designed as a fish pond, though, so the centre was quite deep.

Even more surprising, the Woodland Trust reports that in 2002 wildlife surveyors were amazed to find more than fifty toads about three metres up in woodland canopy, inside dormouse nest-boxes and in tree hollows usually

frequented by bats. Toads are known to shelter, feed and hibernate in woodland, amongst leaves and under dead wood, where they find plenty of insects, slugs, worms and spiders. It was a fascinating discovery when they were also seen quite high up in trees.

Five years later, in 2007, yet another astonishing fact about the behaviour of the common toad came to light. When underwater research was being carried out in Loch Ness, a remotely-operated vehicle enabled scientists to watch a common toad moving along the bottom of the lake. It was down there at a depth of 99m (324') which was extraordinary for an amphibian which needs to breathe air.

The common or European toad, *Bufo bufo*, is the largest of seven amphibians native to Britain. Lengths of 15cm (6") have been recorded. It occurs throughout most of Europe, with some notable exceptions: it is not native to Ireland, although at least two small populations of introduced toads have been found in Eire in recent years.



Natterjack toad (Marek Szczepanek/Wikipedia)

The other toad species native to the UK, the Natterjack toad, *Epidalea calamita*, does occur naturally in Ireland. The common toad is also absent from the Isle of Man, the Scottish islands, the Isles of Scilly and most of the Channel Isles. It does occur much further afield, though, in north west Asia and in the northern mountain ranges of north west Africa.



Natterjack toad (Karl Charters/Norfolk Wildlife Trust)

Across its range it is mostly found in forested areas, especially in wet places. It also lives in fields, hedges, small woodlands, parks and gardens, quite often some distance away from open water which it needs for breeding.

People are usually more used to seeing or thinking about frogs, which are often more active during the day. They have smooth, moist skin and round pupils in their yellow eyes. Frogs move mostly by hopping and, especially when disturbed, by leaping with the help of their long back legs. In contrast, common toads have duller-coloured, drier and warty skin. Their eyes are strikingly copper-coloured with horizontal pupils and they move along by walking slowly or sometimes by short, shuffling jumps, using all four short legs. Their hind feet have long unwebbed toes.

Toads are largely nocturnal creatures. During the day they stay hidden in lairs they have hollowed out amongst leaves or under roots or stones. At dusk they emerge to hunt and can travel quite a long way during the night, being most active in wet and warm (over c.5°C) conditions. They wander as far as 1km from their breeding sites so are more nomadic and terrestrial than frogs. Toads are great allies of gardeners, devouring slugs, caterpillars, woodlice, flies and sometimes small mice. They also eat earthworms, spiders and even small slow-worms and grass snakes (larger grass snakes turn the tables by eating toads!). With no teeth, toads swallow their food whole in a series of gulps.



Common frog, *Rana temporaria*
(Richard Bartz/Wikipedia)

The common toad has two interesting means of defending itself from attack. To appear to be larger than it actually is, it inflates its body with air and stands as high as it can on all four legs, lifting its hindquarters and lowering its head. Its main self-defence, however, is the production of a toxin called bufotoxin. This is present in its paratoid glands, just behind the eyes, and in other glands on its skin. When secreted the toxin tastes foul and does deter many predators, but otters, hedgehogs, rats, herons, crows and birds of prey do all manage to eat them. Grass snakes seem to be unaffected by the toxin and crafty crows have been seen to avoid it by puncturing the skin with their beaks and pecking out the toad's liver. Toad tadpoles also contain toxins which deter fish from eating them. Great crested newts are not put off, though, and aquatic invertebrates like dragonfly larvae and

puffinpages@gmail.com

water boatmen can avoid the toxin by puncturing the tadpoles' skin and sipping on the juices.

Emerging from hibernation in spring, common toads leave their refuges in woodlands, log-piles, compost heaps, dry-stone walls and damp outbuildings, then head to their traditional breeding ponds. More than 80% of males marked as juveniles were found to return to the same pond where they were spawned.

The males arrive first and stay there for several weeks waiting for the females, which only stay to mate and spawn. Males compete for mates by loud croaking, so this is always a welcome sound at your local pond (it is possible to distinguish between croaking toads and croaking frogs). Sometimes several eager males all attempt to mount one large female at the same time and occasionally this results in the female drowning. The successful male stays grasping the female, in 'amplexus', for several days and fertilises the long, double-strings of small black eggs which she lays. These strings are found tangled amongst the stems of pond-plants. Each string may contain between 1,500 and 6,000 eggs and can be up to 4.5m (15') long!

Toad tadpoles, which are smaller and darker than frog tadpoles, hatch out after ten days. A few weeks later they develop legs and by twelve weeks old they become tiny toads of c.1.5cm (0.6") long. In June or July they will leave the pond and begin their nomadic lives. In the wild, most toads only survive between six and twelve years, but in captivity they have survived for up to fifty years. Many are killed by predators, especially rats, and many others by traffic on roads they attempt to cross during spring migration. These sections of road have often been built over streams, so age-old toad migration routes would originally have followed water-courses. Efforts have been made in several European countries, including the UK, to reduce the numbers of toads being run over either by setting up toad patrols or by installing special tunnels under roads known to be important potential hazards for migrating toads.

Both species of toad are also under threat from habitat loss, including drainage of wetlands, agricultural activities and pollution. The smaller, more colourful natterjack toad is very rare in the UK, now only surviving in about 60 sites. It breeds in warmer, shallow water in coastal marshes and sand-dunes. It is still threatened by the loss of coastal habitats, but has been successfully reintroduced to some sites.

On an international scale, all amphibians are threatened by a serious infectious fungal disease called *chytridiomycosis*. This is thought to have been spread

accidentally by people over decades and is causing mass mortalities worldwide with some species already becoming scarce or even extinct. Worryingly, the disease has been found in common toads in the UK and this could pose a threat to some populations. It's always best not to move toads or other amphibians from one place to another to try and prevent the spread of any disease.

📖 Froglife

www.froglife.org

📖 Woodland Trust

www.woodlandtrust.org.uk/

📖 Amphibian and Reptile Conservation

www.arc-trust.org

📖 North Wales Wildlife Trust

www.northwaleswildlifetrust.org.uk

📖 Common toad

https://en.wikipedia.org/wiki/Common_toad

📖 Natterjack toad

https://en.wikipedia.org/wiki/Natterjack_toad

📖 Common frog

https://en.wikipedia.org/wiki/Common_frog

The National Garden Scheme in North Wales 2024...

Rebecca Andrews

The Gwynedd and Anglesey National Garden Scheme (NGS) has some wonderful gardens opening this year, including a host of exciting new gardens to visit.

Through the generosity of garden owners opening their gardens to the public, the NGS raised over £3.43 million during 2023 for nursing and health charities. This was distributed to Macmillan Cancer Support (£450,000), Marie Curie (£450,000), Hospice UK (£450,000), Carers Trust (£350,000), The Queens Nursing Institute (£425,000), Parkinson's UK (£350,000) and many more donations to other worthy beneficiaries.

Many local health and nursing charities across Gwynedd and Anglesey benefit directly from the monies raised, with our donations becoming an increasingly important source of funding for them, so please invite your family and friends to join your garden visits, to help us raise even more this year. Many gardens offer delicious cakes and refreshments and sell unusual plants, and many also welcome dogs on leads. It's a lovely way to support these charities whilst enjoying yourself, too.

Please see the yellow cut-out-and-keep panel on page 24 and look out for the yellow booklets that are circulating, or visit the NGS website and click on the *Find a garden* link. This allows you

to find gardens according to specific dates and locations. The links are given below.

The Gwynedd and Anglesey NGS Facebook page hosts information on garden openings amongst other news, and you can share and post your own garden visit photos and stories there as well.

You might consider visiting our gardens that 'open by arrangement' throughout the year; the link is given below. It's an easy way to arrange a social trip out for any group of people, including family and friends.

A phone call to the garden owner is all that's usually required to arrange a visit. You could suggest organising an outing for a group to which you belong, to help build up visitor numbers.

For more information and detailed directions to all the open gardens listed, we recommend that you visit the NGS website before you visit, for full and up-to-date information about our garden openings.

♦ ♦ ♦

Croeso i'n gerddi yn y rhan syfrdanol brydferch hon o Gymru. Chwiliwch yn *Find a garden* am gerddi a dyddiadau fydd o ddidordeb i chi. Dilynwch tudalennau Facebook Gwynedd a Môn NGS am fwy o wybodaeth am y gerddi fydd ar agor yn eich ardal leol.

Am fwy o wybodaeth a chyfarwyddiadau manwl i'r gerddi, ewch i'r wefan canlynol.

📄 National Garden Scheme
<https://ngs.org.uk>

📄 Find a garden
<https://findagarden.ngs.org.uk>

📄 Enjoy an exclusive garden visit with our wonderful By Arrangement option
<https://ngs.org.uk/enjoy-a-special-visit-to-a-garden-gem-with-our-by-arrangement-option/>

📄 Facebook: Gwynedd and Anglesey NGS
www.facebook.com/gwyneddandangleseyngs/

...and in Seiriol Ward
Andrew Perrott

You'll find a list of the Open Gardens 2024 in Anglesey, Conwy and Gwynedd to the right; the list stretches from Conwy itself, via Anglesey, right down to Tywyn and Machynlleth. A booklet is enclosed as well, with more detailed information...so get your diaries out!

As you'll see from the list below there will be Open Gardens right on our doorstep this year, a group of nine in Llanddona (of which three are postally in Llangoed) on 13 July, and two more in Penmon on 1 September.

Go to pages 26-27 for a map and more information.

Saturday 13 July, 11.00am-4.00pm

- ☼ Capel Peniel, Llanddona LL58 8TU (the War Memorial; public access at any time)
- ☼ Pen-y-Gorllewin, Llanddona LL58 8TU
- ☼ Eithinog, Llanddona LL58 8TU
- ☼ Glangors, Llanddona LL58 8TU
- ☼ O'r Diwedd, Llanddona LL58 8TU
- ☼ Tyn yr Rardd, Llanddona LL58 8TS
- ☼ Tyddyn Bach, Llanddona LL58 8UN
- ☼ Cefn Farm, Llangoed LL58 8PW
- ☼ Bryn Rhedyn, Llangoed LL58 8PW
- ☼ Penhwnllys Plas, Llangoed LL58 8PW

Sunday 1 September, 11.00am-4.00pm

- ☼ Llwyn Onn, Penmon LL58 8SG
- ☼ The Old School, Penmon LL58 8RU

The gardens are all different: some neat as a pin, others 'a work in progress', and others working gardens/smallholdings. All are interesting and full of colour, and many have spectacular views over the Menai Strait, Red Wharf Bay and across the breadth of Anglesey.

♦ ♦ ♦

From the NGS booklet *Gardens open for charity: Anglesey, Conwy, Gwynedd, Ceredigion, Carmarthenshire & Pembrokeshire 2024...*

- ☼ **Croeso i'n gerddi** yn y rhan syfrdanol brydferth hon o Gymru.

Gwir werthfawrogwn eich ymweliadau a'ch croesawu i fwynhau, yn yr un modd â ninnau, pa mor unigryw yw pob gardd. Cewch eich ysbrydoli wrth ddianc o fywyd bob dydd ac ar ôl mwynhau chwa o awyr iach Cymru a fydd yn eich adfywio, pam na wnewch chi fwynhau te a chacen mewn amgylchedd ymlaciol?

Diolch yn fawr i'r perchnogion, sy'n ein croesawu i'w gerddi ac sy'n parhau i ddygymod yn rhyfeddol yn y cyfnod hwn o dywydd heriol. Diolch hefyd i'n gwirfoddolwyr oherwydd hebddyn nhw ni fyddem yn gallu agor, i'n hysbysebwy'r, sy'n gwneud cynhyrchu'r llyfryn hwn yn bosib ac yn arbennig i chi am eich ymweliadau a'ch rhoddion sy'n ein helpu i wneud gwahaniaeth i fywydau cymaint o bobl.

Mwynhewch eich taith drwy'r gerddi yn y rhan brydferth hon o Gymru a helpwch ni i ledaenu'r gair 'tyfu'.

Mae'n bosib y bydd gerddi ychwanegol yn agor, bydd newidiadau i'r rhai presennol sydd ar agor, neu bydd gerddi yn agor dros dro – am y wybodaeth ddiweddaraf ewch, os gwelwch yn dda, i www.ngs.org.uk.

- ☼ **Welcome to our gardens** in this stunningly beautiful part of Wales.

NGS Open Gardens 2024 May-September

- ☼ Saturday 4 May
Llanidan Hall, Brynsiencyn LL61 6HJ
- ☼ Sunday 5 May
NEW Caswallon, Amlwch LL68 9NN
Sunningdale, Bull Bay LL68 9SD
- ☼ Saturday 11 May
NEW Mynydd Cors Coch, Llanbedrgoch LL76 8TZ
- ☼ Saturday 18 May
NEW Tyn y Pant, Pwllheli LL53 6DT
- ☼ Sunday 19 May
Gardd y Coleg, Carmel LL54 7RL
NEW Tyn y Pant, Pwllheli LL53 6DT
- ☼ Saturday 25 May
Glan Llyn, Llanberis LL55 4EL
- ☼ Sunday 26 May
Gwaelod Mawr, Caergeiliog LL65 3YL
Tŷ Cadfan Sant, Tywyn, LL36 9DD
- ☼ Saturday 1 June
Sunningdale, Bull Bay LL68 9SD
- ☼ Sunday 2 June
Cae Newydd, Rhosgoch LL66 0BG
- ☼ Saturday 15 June
SPECIAL OPENING Crûg Farm Plants,
Griffiths Crossing, Caernarfon LL55 1TU
- ☼ Sunday 16 June
NEW Cyplau, Llanbedr LL45 2ND
Pensychnant, Conwy LL32 8BJ
- ☼ Saturday 22 June
Llanidan Hall, Brynsiencyn LL61 6HJ
NEW Mynydd Cors Coch, Llanbedrgoch LL76 8TZ
- ☼ Sunday 23 June
Pant Ifan, Llanrug LL55 4HX
- ☼ Saturday 29 June
NEW Caswallon, Amlwch LL68 9NN
Llwydiarth, Mynytho LL53 7RW
- ☼ Sunday 30 June
Llwydiarth, Mynytho LL53 7RW
- ☼ Saturday 6 July
Llanidan Hall, Brynsiencyn, LL61 6HJ
NEW Tŷ Celyn, Tywyn LL36 9LA
- ☼ Saturday 13 July
NEW GROUP OPENING Llanddona
Village Gardens, Llanddona LL58 8TU etc.
- ☼ Sunday 14 July
Pensychnant, Conwy LL32 8BJ
- ☼ Sunday 21 July
Trefnant Bach, Anglesey Bees,
Llanddaniel Fab LL60 6ET
- ☼ Sunday 4 August
Maenan Hall, Llanrwst LL26 0UL
- ☼ Sunday 18 August
41 Victoria Drive, Llandudno Junction
LL31 9PF
- ☼ Saturday 31 August
Trefnant Bach, Anglesey Bees,
Llanddaniel Fab LL60 6ET
- ☼ Sunday 1 September
NEW Llwyn Onn, Penmon LL58 8SG
NEW The Old School, Penmon LL58 8RU
- ☼ Saturday 7 September
NEW Plannwch y Plas, Machynlleth
SY20 9JB
- ☼ Saturday 14 September
Treborth Botanic Garden, Bangor
University, Bangor LL57 2RQ
- ☼ Sunday 15 September
NEW Gwenfro Uchaf, Llangefni
LL77 8JD
- ☼ Sunday 22 September
Gardd y Coleg, Carmel LL54 7RL

We really appreciate your visits and welcome you to enjoy, as we do, the uniqueness of each garden. Be inspired whilst escaping from everyday life and, after enjoying a breath of reviving Welsh air, why not reward yourself with tea and cake in relaxing surroundings?

Very many thanks to our garden owners, who welcome us into their gardens and continue to cope admirably in these times of challenging weather. Thanks also to our volunteers, without whom we could not open and to our advertisers, who enable the production of this booklet and especially to you for your visits and donations which help us make such a difference to so many people's lives.

Enjoy your garden journey through this beautiful part of Wales and help us spread the 'growing' word.

There may be additional open gardens, changes to existing openings, or pop-ups: do please check www.ngs.org.uk for the latest information.

◆ ◆ ◆
National Garden Scheme
<https://ngs.org.uk>

Find a garden
<https://findagarden.ngs.org.uk>

Enjoy an exclusive garden visit with our wonderful By Arrangement option
<https://ngs.org.uk/enjoy-a-special-visit-to-a-garden-gem-with-our-by-arrangement-option/>

Facebook: Gwynedd and Anglesey NGS
www.facebook.com/gwyneddandangleseyngs/



Motorbikes

Mike Thomas

This follows on from **The Puffin** 47, page 26: *David, Sam, William and Charlie*: they're now in their teens.

◆ ◆ ◆
It's 1957... The UK is virtually broke. Food rationing had ended three years before. There were few luxuries for the families of ordinary working men but there was enough food in the shops and real hunger seemed to be a thing of the past.

Army surplus stores sprang up offering drab-but-serviceable ex-WD clothing. Plenty of ex-WD motorbikes were already around, good machines, solid and reliable bikes which had been used by army despatch riders. They often had low gearing and knobby tyres. You had puffinpages@gmail.com

to be over 17 to ride a 350cc bike, which meant months of waiting and saving for the boys. They still saw 'the girl', always in her dad's car with its distinctive growl; they were still mesmerised by her beauty, her little finger waves seemed more provocative than ever. They still didn't know her name or exactly where she lived. To them she was Angela. An angel.

It came as a huge surprise to the lads when Charlie announced his brand new motorbike. His dotting grandad bought it, it was all his, a brand-gleaming-new Triumph Tiger Cub. It was road legal, too! And as it was less than 200cc it was OK for a 16-year-old to ride. The others looked on with envy; they had many months to wait until they were 17 and then they had to find and buy one.

There were plenty of smaller motorbikes around but always at a price they couldn't afford. Ex-WD machines were half the price but they had bigger engines. And the minimum age...



The brand-gleaming-new Triumph Tiger Cub... (Mike Thomas)

Their motivation to own a motorbike was simple: they wanted the freedom of movement without buses and trains. They wanted, for instance, to stay late at the Elcabala coffee bar on the coast which was open late and the last bus home was at 8 o'clock.

Another friend asked for their help; his name was Phil and he was regarded as a genius. Phil had built a radio mast, a huge wooden tower which was higher than his house. The council told him, via his Dad, to take it down immediately. His present problem which he needed help with involved a model aeroplane, a glider with an eight-foot wingspan. Phil had calculated that it would need a 20mph launch speed. As Olympic runners' best speed was about 15 mph, how was Phil going to make it happen? It turned out to be very simple. As soon as they saw the three thick forked twigs they worked out what to do. Phil, of course, had the brain to think of it!

The launch took place on a small field; Phil attached the glider with a 'drop off' release, a curtain ring which hooked on to a nail beneath the fuselage. The launch cord was hooked around David's forked stick. He stood still and Sam had to run away from him, and Charlie in turn

ran away from Sam. William had the end of the cord and ran away from Sam. All at once! If they all managed to run at just 8mph it would aggregate to nearly 30 mph. Phil reckoned his glider to be doing about 30mph when it released and soared away. It was not a controlled flight and it crashed impressively on to someone's roof.

Then there was Alister; he had been around since they had dens in the woods. He came whistling by with his little dog, he obviously wanted to befriend them. Alister was 'posh', his accent was 'plummy', his clothes were not patched and darned like theirs and he went to a private school. So he was shunned. Despite this, he was always polite and now he was seen riding a new Lambretta scooter which added to their envy.

These were the beginnings of a division of cultures which in a few years would be defined by the media as 'Mods and Rockers', but in 1957 everyone was still more or less equal.

Getting a job became important; the lads were not well qualified. Until they left school they could earn only by potato picking or similar temporary work. Charlie was lucky to have a wealthy grandad. The others not so, there were few jobs where earnings were more than £4 10s a week.

They were all 'seeking employment' and there wasn't much choice.

Triumph Tiger Cub
https://en.wikipedia.org/wiki/Triumph_Tiger_Cub

1952-1969 Triumph Tiger Cub: The Baby Bonnie
www.motorcycleclassics.com/classic-british-motorcycles/triumph-tiger-cub-zmmz12ndzbea/

Neuadd Bentref Llanddona Village Hall: newyddion y gwanwyn

Debbie Oulton

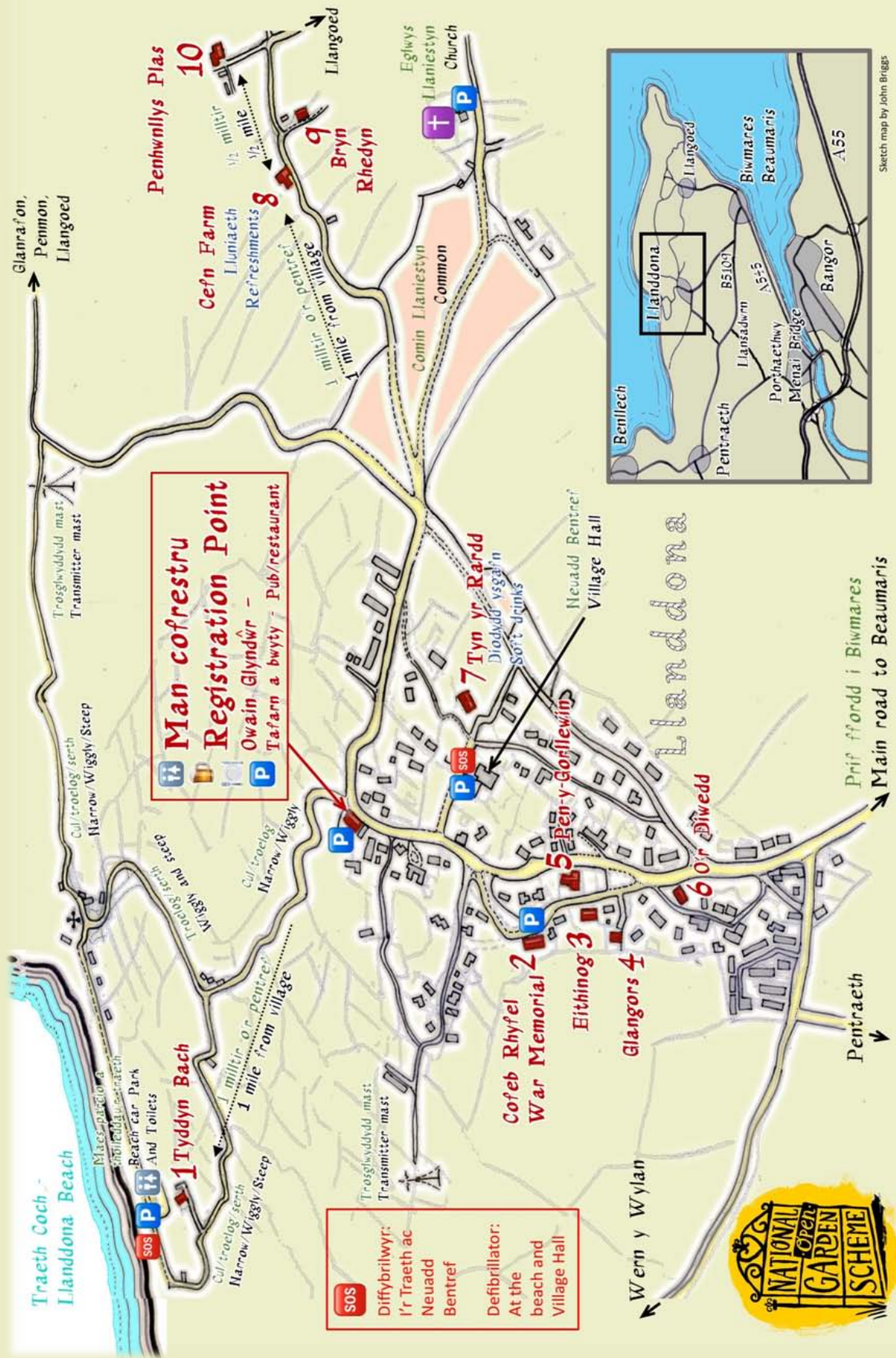
Bu digwyddiadau diddorol ac addysgiadol i gychwyn 2024 yn Neuadd Bentref Llanddona.

Mis Ionawr cynhaliwyd Gweithdy Serameg gan yr arbenigwraig Lynn Gallagher. 'Roedd nifer o greaduriaid diddorol wedi cael eu creu yn ystod y ddau sesiwn gyda digon o dalent yn cael ei arddangos.

Mis Chwefror cafwyd sgwrs am yrfa Chris Pilkington, Prif Arddwr yng Ngerddi Cudd Plas Cadnant Hidden Gardens, wrth iddo rhoi cyflwyniad diddorol 'A Gardener's Journey' drwy PowerPoint. Rhanodd Chris gryn wybodaeth ac arbenigrwydd yn ystod

(continued on page 28)

LLANDDONA OPEN GARDENS • SATURDAY 13 JULY 2024



SOS Diffybrilwyr:
I'r Traeth ac Neuadd Bentref

Defibrillator:
At the beach and Village Hall



LLANDDONA OPEN GARDENS

SATURDAY 13 JULY 2024

The numbers 1 to 10 below correspond to the numbers in the adjacent map

<p>1 Tyddyn Bach Llanddona LL58 8UN</p>	<ul style="list-style-type: none"> • Smallholding; Jacob sheep; chickens; working ceramic studio; pots for sale; views over Llanddona Beach and Red Wharf Bay; greenhouse with raised vegetable/herb beds; orchard; beehives • Dogs welcome on lead; toilet facilities; garden is largely wheelchair-friendly • Good parking facilities
<p>2 Capel Peniel War Memorial Llanddona LL58 8TU</p>	<ul style="list-style-type: none"> • Public access at any time • Colourful pots and borders with a bench for quiet reflection • Limited parking facilities
<p>3 Eithinog Llanddona LL58 8TU</p>	<ul style="list-style-type: none"> • Raised beds; planters and pots; greenhouse with a variety of vegetables; floral features under development • Dogs welcome on lead • Plant sales
<p>4 Glangors Llanddona LL58 8TU</p>	<ul style="list-style-type: none"> • Work in progress on a recently restored garden; views across Anglesey towards Holyhead; wildlife area • Dogs welcome on lead; toilet facilities • Plant sales
<p>5 Pen-y-Gorllewin Llanddona LL58 8TU</p>	<ul style="list-style-type: none"> • Colourful garden making extensive use of pots; raised beds; greenhouse • Dogs welcome on lead • Wheelchair access
<p>6 O'r Diwedd Llanddona LL58 8TU</p>	<ul style="list-style-type: none"> • Small but interesting garden; raised beds growing a variety of vegetables; greenhouse; hanging baskets; planted beds and pots • Dogs welcome on lead; toilet facilities
<p>7 Tyn yr Rardd Llanddona LL58 8TS</p>	<ul style="list-style-type: none"> • Large garden; wildlife pond; vegetables; greenhouse; wild area with some native tree planting • Dogs welcome on leads; cold soft drinks available
<p>8 Cefn Farm Llangoed LL58 8PW</p>	<ul style="list-style-type: none"> • Working farm; walled cottage garden featuring stones from the original Penmon Priory; views over the Menai Strait • Dogs welcome on lead; toilet facilities; refreshments available • Plant sales; eggs and seasonal vegetables for sale • Wheelchair access; some cobbles and gravel • Limited parking facilities
<p>9 Bryn Rhedyn Llangoed LL58 8PW</p>	<ul style="list-style-type: none"> • Interesting garden with orchard; greenhouse; views over the Menai Strait; picnic area • Dogs welcome on leads • Wheelchair access
<p>10 Penhwnllys Plas Llangoed LL58 8PW</p>	<ul style="list-style-type: none"> • Working smallholding; greenhouse with grapevines; recent planting of a variety of trees; vegetable patch; goats, chickens and turkeys • Dogs welcome on lead; toilet facilities • Plant sales • Limited parking facilities

(from page 25)

sesiwn holi ac ateb.

Pan ymwelodd Noel Thomas a'i ferch Siân ym mis Mawrth, 'roedd y Neuadd yn orlawn. Cyflwynwyd Noel gan ein cynghorydd lleol, Carwyn Jones. Rhoddodd Noel sgwrs ddiwyll am ei brofiad personol gyda sgandal y Swyddfa Bost. Cafodd sgysiau gyda'r gynulleidfa a llofnododd gopïau o'i lyfr 'Llythyr Noel'. Teimlodd Noel a Siân eu bod wedi cael croeso twymgalon yn y Neuadd.



Arwyddo llyfr
Booksigning
(Emily Owen)



Noel Thomas yn cyfarfod nifer fawr o wirfoddolwyr a gwesteion
Noel Thomas meets a large number of volunteers and guests
(Deb Oulton)

Llygaid i lawr ar gyfer y nosweithiau rheolaidd a phoblogaidd Bingo yn y Neuadd. Amser gwych i gael at eich gilydd gyda ffrindiau dros luniaeth cartref a diod, gyda gwobrwyon gwych ar gael.

Achlysur hyfryd a gynhaliwyd fis Mawrth oedd ein Ffair Wanwyn. Ar werth 'roedd crefftau lleol, planhigion prydferth ynghyd a lluniaeth blasus poeth gan Barbara, a theisennau blasus gan Claire ac Ann. Cafwyd ymweliad gan y Bwni Pasg a gadawodd digonedd o wyau ar gyfer yr Helfa Wyau Pasg. 'Roedd ystafell wedi ei neilltuo i'r plant ar gyfer gwaith crefft a paentio gwynebau. Ynghyd a hyn daeth y mulod yn ol a hefyd teithiau gyda ceffyl a cherbyd.

Bydd nifer fawr o ddigwyddiadau cyffrous yn cael eu cynnal yn Neuadd Bentref Llanddona dros y misoedd i ddilyn – gweler *What's happening where?* ar dudalen 9 – gan gynnwys gweithgareddau newydd fel cadw'n heini

a sesiynau TG sylfaenol. Mae Caffi Ni yn falch iawn cyhoeddi ein bod wedi cadw ein Sgor hylendid bwyd o 5-seren yn dilyn ymweliad yn ddiweddar gan Swyddog Iechyd yr Amgylchedd o Gyngor Sir Ynys Môn.

Dymuna Pat Hughes (Cadeirydd) ac Ymddiriedolwyr y Neuadd ddiolch i drigolion Llanddona, ymwelwyr a gwirfoddolwyr am eu cefnogaeth gwerthfawr.

Cadwch lygad allan am bosteri yn y Neuadd ac ar hysbysfyrdau y pentref a diweddariadau ar Facebook.

📍 Neuadd Bentref Llanddona Village Hall
www.facebook.com/llanddona-villagehall/

📍 Cymuned Llanddona Community
www.facebook.com/groups/llanddona/



Neuadd Bentref Llanddona Village Hall: spring news
Debbie Oulton

Llanddona Village Hall started 2024 with some interesting and educational events.

January blues were banished with a Ceramics Workshop delivered by expert Lynn Gallagher. Spread over two sessions, participants created an array of charming creatures. Lots of talent on display.



Sesiwn holi ac ateb 'A Gardener's Journey'
'A Gardener's Journey' Q&A
(Debbie Oulton)

In February Chris Pilkington, Head Gardener at Gerddi Cudd Plas Cadnant Hidden Gardens, gave us a fascinating insight into his career with a PowerPoint presentation entitled 'A Gardener's Journey'. Chris also shared his considerable knowledge and expertise with an engaging question-and-answer session.

The Hall was filled to capacity when Noel Thomas and his daughter, Siân, visited in March. Noel gave a frank and thought-provoking talk about his own experience of the Post Office scandal, and signed copies of his book, 'Llythyr Noel.' He and Siân commented that the

welcome they received at the Hall had warmed their hearts.

Eyes down for fun Bingo evenings, a regular and popular event at the Hall! A great opportunity to get together with friends over a drink and home-made snacks and maybe win a cash prize.



Llygaid i lawr...
Eyes down...
(via Debbie Oulton)

Our Spring Fair in March was a lovely occasion. Local crafts and beautiful plants for sale as well as tasty hot snacks, freshly made by Barbara, some amazing cupcakes created by Ann and Claire, and cakes by Ayiesha. The Easter Bunny paid us a visit and left lots of eggs for the Easter Egg Hunt. A whole room was dedicated to fun crafting and face painting for the kids, and the donkeys were back as well as open carriage rides.



Y Bwni Pasg ddirgel
The mysterious Easter Bunny
(Shaun Oulton, Ayiesha)

Neuadd Bentref Llanddona Village Hall will be hosting lots of exciting events over the coming months – see *What's happening where?* on page 9 – including new activities such as keep fit and basic IT sessions. We are also pleased to announce that Caffi Ni has maintained its 5-star food hygiene rating following a recent inspection from Isle of Anglesey CC's Environmental Health Officer.

Across

- 7 Block or stop (6)
- 8 Result of an action (6)
- 9 Gunge up (4)
- 10 Comic hero (8)
- 11 Happily (7)
- 13 Doubter or faultfinder (5)
- 15 Group event or motor race (5)
- 17 US government term (7)
- 20 Canned fish (8)
- 21 Extinct bird (4)
- 23 Moral rules (6)
- 24 Bring round (6)

Pat Hughes (Chair) and Trustees of the Hall would like to thank Llanddona residents, visitors and volunteers for their valued support. Keep an eye out for posters in the Hall and on village notice boards, and updates on Facebook.

- 📌 Neuadd Bentref Llanddona Village Hall
www.facebook.com/llanddona_villagehall/
- 📌 Cymuned Llanddona Community
www.facebook.com/groups/llanddona/

Chess in the cinema

Fianchetto 66

It's remarkable how many times chess pieces and games appear in films, the director frequently using them as theatrical devices to confer intelligence as well as cunning upon the protagonists.

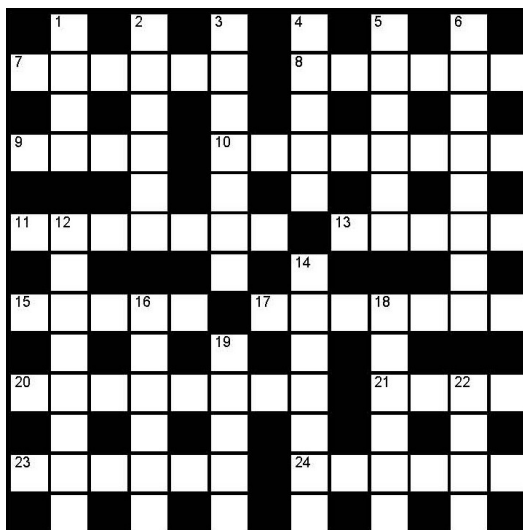
Take the famous sequence in the 1968 version of *The Thomas Crown Affair*. At first glance, the chess scene appears to be a reflection of the attraction between the characters played by Faye Dunaway and Steve McQueen, but look deeper and a metaphor is revealed for the battle of wits between the investigator and the felon.

There are some who rate *From Russia with Love* as the best Bond film of all time. Very early in this 1963 icon, the Czechoslovakian agent Kronsteen competes in the Venice International Grandmasters Championship, bringing the match to a swift conclusion when summoned by his Spectre overlords. Kronsteen's subsequent plan to deal with 007 is based upon the tactic of luring one's adversary into a trap by offering a chess piece as bait.

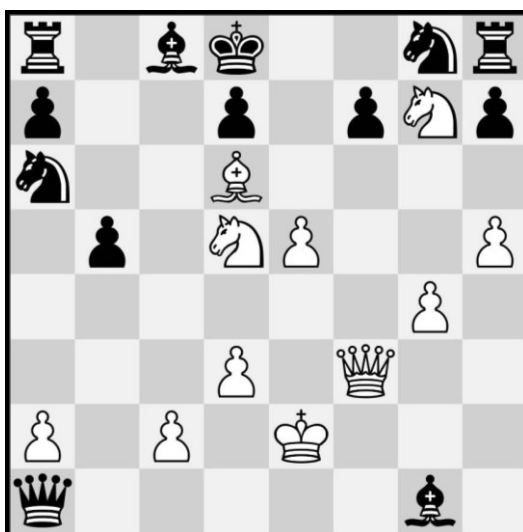
In the first Harry Potter film, *Harry Potter and the Philosopher's Stone*, Ron uses the ultimate tactic, sacrifice, to allow Harry to checkmate their enchanted opponent and gain access to the Philosopher's Stone. The moves in this scene were devised by an

puffinpages@gmail.com

The Governor's Quick Crossword no 16



Fianchetto 66's Chess no 7



Vladek Sheybal as Kronsteen, a Czechoslovakian Grandmaster working as a spy for Spectre, in a scene from *From Russia With Love* (via Fianchetto 66)

The solutions are on page 37.

American Chess Master to suit the requirements of the script.

This column is not the place for a comprehensive list of examples (it would fill several pages), but my favourite is from the 1982 film *Blade Runner*. A cult classic, it follows Rick Deckard, the character played by Harrison Ford; Deckard is charged with the task of 'retiring' a group of genetically-engineered humans known as

Replicants who have gone rogue. The chess scene itself centres upon the replicants' limited life span and their belief that, if they can literally 'meet their maker' Eldon Tyrell, he might grant them immortality.

To gain entry to Tyrell's apartment, they purport to be one of his trusted employees who is engaged in a convoluted arm's-length game of chess with his boss, and by submitting a cunning move they checkmate Tyrell and persuade him to allow them within.

Intriguingly, this was no contrived set of moves, but rather the end of the well known and aptly titled "Immortal Game" played between Adolf Anderssen and Lionel Kieseritzky at the 1851 chess tournament in London; it is the subject of this month's puzzle: it is white to play and mate in two moves using a startling sacrifice for the first of them.

📌 The Thomas Crown Affair
www.chess.com/article/view/the-thomas-crown-affair

📌 James Bond – From Russia With Love (1963)
www.chess.com/blog/illingworth/james-bond-from-russia-with-love-1963

📌 Immortal Game
https://en.wikipedia.org/wiki/Immortal_Game

📌 The Immortal Game: Anderssen vs Kieseritzky (1851)
www.chess.com/article/view/the-immortal-game

Embracing wellness in Spring: revitalise your body and mind with nature

Vivien Shaw PhD Dip Ac MBACc

As the cold grip of winter loosens its hold, and the sun begins to cast its warm embrace upon the earth, there's a palpable sense of renewal in the air. Spring, with its lengthening days and burgeoning life, beckons us to emerge from our winter cocoons and embrace the vitality of the season. It's a time for rejuvenation, for both our bodies and our minds, as we reconnect with the natural world and prioritise our wellness.

One of the most noticeable changes as spring unfolds is the increasing daylight. With each passing day, the sun graces us with a little more of its presence, coaxing us out of our indoor retreats and into the great outdoors. The extended daylight hours provide ample opportunity to bask in the natural light, which can have profound effects on

our mood and overall well-being. Exposure to sunlight triggers the release of serotonin, a neurotransmitter associated with feelings of happiness and relaxation, helping to alleviate symptoms of seasonal affective disorder and boost our mood.

As people begin to shed their winter layers and venture outside, there's a tangible sense of collective energy and excitement. It's as if we're all emerging from a period of hibernation, eager to stretch our limbs and feel the warmth of the sun on our skin once again. And what better way to celebrate the arrival of spring than by immersing ourselves in the beauty of nature?

One of the simplest yet most effective ways to embrace wellness in spring is by taking leisurely walks amidst nature. Whether it's a stroll through a local park, a hike along forest trails, or a leisurely amble along the beautiful coastline, walking outdoors offers myriad benefits for both body and mind. The rhythmic movement of walking combined with the sights, sounds, and scents of nature can help to reduce stress, improve mood, and increase feelings of relaxation and well-being. Plus, the physical activity provides a gentle form of exercise that promotes cardiovascular health and strengthens muscles.

For those seeking a more invigorating outdoor experience, spring offers the perfect opportunity to engage in outdoor sports and activities. From high-intensity pursuits like running and cycling to more leisurely pastimes like outdoor bowls or yoga in the park, there's something for everyone to enjoy.

Engaging in outdoor sports not only provides a great workout for the body but also allows us to connect with nature in a meaningful way. Whether we're breathing in the fresh air as we sprint along woodland trails or feeling the earth beneath our feet as we practice yoga in a sun-dappled meadow, outdoor sports offer a unique opportunity to harmonise our physical and mental well-being.



Acupuncture
Vivien Shaw PhD Dip Ac MBACc

Vivien is a professional acupuncturist with over 30 years' experience. She specialises in helping with pain relief and anxiety disorders.

Call or email to see if acupuncture could help you

vivienshaw3@gmail.com

07971 536205

<https://seiriolwellnesscentre.co.uk/acupuncture>
<https://www.nhs.uk/conditions/acupuncture/>

OSTEO YR YNYS
THE ISLAND OSTEOPATH

Osteopathic care for adults, babies and children from your local family Osteopath

@ Seiriol Wellness Centre, Canolfan Beaumaris & Beaumaris Library, LL58 8AL

- Back pain
- Joint pain
- Shoulder pain
- Sciatica
- Babies and children
- Sport injuries
- Fibromyalgia
- Neuralgia
- Tension

OSTEO YR YNYS

Book online at: www.theislandosteopath.com or www.osteoyrnys.com Tel: 07986 340578

SCAN ME

Here on Anglesey, we're fortunate to be surrounded by an abundance of natural beauty, making it the perfect destination for those seeking to reconnect with nature and prioritise their wellness. With its stunning coastline, picturesque countryside, and diverse array of outdoor activities, Anglesey offers endless opportunities to immerse yourself in the great outdoors. Whether you're exploring the rugged cliffs and sandy beaches of the Anglesey Coastal Path, birdwatching at the renowned South Stack Cliffs RSPB Reserve, or simply enjoying a leisurely picnic in one of the island's many parks, there's no shortage of ways to experience the wonders of nature first-hand.

So as spring unfurls its vibrant tapestry of colours and scents, why not take advantage of the season's offerings and prioritise your wellness? Whether it's through leisurely walks in nature, engaging in outdoor sports and activities, or simply taking time to soak up the sun's rays, there are countless ways to embrace the rejuvenating power of spring. And here on Anglesey, with its unparalleled natural beauty and wealth of outdoor opportunities, there's no better place to embark on your wellness journey amidst the splendour of the season.



Seiriol Men's Shed

Mike Thomas

These days I anticipate our meetings with great pleasure; I especially enjoy the start when we arrive and make ourselves a cuppa in our very scruffy kitchen, then go and sit in one of the miscellaneous chairs in our 'executive lounge', have a couple of biscuits and chat about anything and everything.

There are usually about twelve of us, and when we've finished our coffee or tea some of us depart for our gardens with the greenhouse and the poly tunnel. It's not strictly a poly tunnel; because it doesn't get as hot inside; it controls insect damage and, of course, doesn't need watering as often.

We're in the process of laying flagstone paths and making raised beds to enable wheelchair users or people who cannot work at ground level to enjoy growing things. There's a good greenhouse to grow salad crops and outdoor beds for fruit and veg. We have a simple sharing system amongst members, whether they are involved in the garden, the workshop or the craft studio or just enjoy a game of chess or scrabble.

The workshop activity is currently dominated by refurbishing an observatory, a job which has become more complex than expected but will soon be done. We are able to repair furniture, not the upholstered type, just chairs and tables, etc., by dismantling, reglueing wobbly joints, sanding and finishing.

Whilst we are a not-for-profit organisation we need some income to buy and replace equipment and machinery, so we ask for a realistic donation for work done. Clean timber is always welcome so we can make and offer garden benches, retime iron bench ends, make bespoke arbours, trellises, wind vanes, bird nesting boxes, and so on.

Our insurance covers us only for on-site work but we always try to help. As our membership increases so does the scope of our activities. The Shed belongs to its members; some Sheds have singing or instrumental groups, and subjects like walking, history, art and model making are waiting opportunities.

New members are always welcome. Subscriptions are £10 a month, and members need to be DBS-checked; because adults with learning difficulties occupy the same area, we deal with this.

Do try us! There's no obligation. Tuesday or Thursday mornings, it's for men aged 18 to 108...

You'll find directions to Seiriol Men's Shed and other useful information on page 12.

• • • • •
Chwifio Baneri yn Llangoed 🍁
Julie Upmeyer

Bydd polyn baner yn Neuadd Bentref Llangoed unwaith eto! Gyda chymorth gan brosiect Balchder Bro, byddwn yn dylunio baneri i gynrychioli ein cymuned, dathlu digwyddiadau arbennig a chreu bwrlwm gweledol o amgylch ein neuadd bentref leol sy'n 114 oed.

Bydd y polyn baner yn cael ei lansio gyda chyfres o ddeg baner wedi'u hargraffu'n arbennig. Bydd rhai o'r rhain yn cael eu dylunio gan ddisgyblion Ysgol Llangoed a bydd eraill yn cael eu dylunio gan gystadleuaeth dylunio agored.

A ydych chi'n chwilfrydig am ddylunio graffeg? A ydych chi'n meddwl tybed sut mae logos, baneri, poster a graffeg ar

puffinpages@gmail.com

gyfryngau cymdeithasol wedi'u dylunio? A hoffech chi roi cynnig ar ddylunio baner?

Ar 9 Mehefin, byddwn yn cynnal gweithdy dylunio rhad ac am ddim yn Neuadd Bentref Llangoed gyda'r artist a dylunydd, Ffion Pritchard. Gweler tudalen y prosiect am ragor o fanylion; cliciwch ar *Projects*.



(Julie Upmeyer)

Mae Chwifio Baneri yn Llangoed yn brosiect gan Brosiectau Plas Bodfa ac yn cael ei gefnogi gan Balchder Bro.

🏴‍☠️ **Flags Flying in Llangoed**
www.plasbodfa.com/projects/flags-flying-in-llangoed

🏴‍☠️ **Anglesey communities invited to apply for support**
www.wales247.co.uk/anglesey-communities-invited-to-apply-for-support



Flags flying in Llangoed
Julie Upmeyer

Llangoed Village Hall will once again have a flagpole! With support from the Balchder Bro project, we will be designing flags to represent our community, celebrate special events and create a visual buzz around our local 114-year-old Village Hall gathering place.

The flagpole will be launched with a series of ten custom-printed flags. Some of these will be designed by students at Ysgol Llangoed and others will be designed by an open design competition.

Are you curious about graphic design? Do you wonder how logos, banners, posters and graphics on social media are designed? Would you like to try your hand at designing a flag?

On 9 June we will be having a free design workshop at Llangoed Village Hall with artist and designer Ffion Pritchard. Please see the project page for more details: click on *Projects*.

Flags Flying in Llangoed is a project of

Plas Bodfa Projects and is supported by Balchder Bro.

🏴‍☠️ **Flags Flying in Llangoed**
www.plasbodfa.com/projects/flags-flying-in-llangoed

🏴‍☠️ **Anglesey communities invited to apply for support**
www.wales247.co.uk/anglesey-communities-invited-to-apply-for-support

• • • • •
Mobility Scooter Grand Prix
Ray Parsons

In the bar at the Bulkeley one evening

I met a most interesting chap.

Well, me and this man came up with a plan

To put Beaumaris on the 'must visit' map.

Forget your Balearics, the wonders of Rome

And the likes of London or Paris, Me and a small team have come up with a scheme

To showpiece the delights of Beaumaris.

It will be the first of its kind in this country,

Or the world, well most probably?

The town will be rocking as people come flocking

To 'The Mobility Scooter Grand Prix'.

Speed and age would be limited to ninety

For all who were intending to drive,

If relatively bright, knew left from right,

And were at least sixty-five.

With the pits in the square by the courthouse

They will race at top speed 'round the Green,

Drop down a gear as they turn at the pier,

Then back to where they have just been.

Qualifying and practice will be on the Friday,

On Sunday the main event,

With Saturday held back for mechanics on track

To straighten the bits that get bent.

Superyachts of the rich and the famous

And the publicity that will create,

With such interest shown we will soon be known

As 'Monte Carlo on the Menai Strait'.

• • • • •
A good day at the office
Tommy Miller, Llanddona Writers Group

Framed by the parallel fringe of tree canopy that ran either side of the track.

The cloudless bright sky was a twisting

ribbon of blue. A mirror of the shape of the track as it snaked down through the wood. I love the wood, whatever time of year.

But there was something special, life-affirming in the sights, sounds and smells of the wood in the fecundity of high summer. Everything was in full flow, thick with vigour and life. Roving brambles leapfrogged through the shrubs and saplings. Gangs of bumbling fledglings hopped along the ground and low branches. Gilded clouds of insects danced and hummed, captured in a ray of light. A buzzard cried, then swooped silently through the trees as a woodpecker's machine-gunned peel ripped through the air. Beautiful.

The path was overgrown in places, only the thin twin ruts of a long-past tractor free of the lush undergrowth. I came to a large waddling hedgehog ahead of me but could only walk the tightrope-like strip of black earth so couldn't pass. I had to follow, at his pace, until he could escape the thin trench of the rut back into the wood. It was a joy to watch. Walking through the woods with a hedgehog; what a way to start the day I thought to myself with a smile.

At the end of the track, I climbed the gate and headed down the lane for the bus. Four short stops later I was walking up the long curving drive of the Manor House. Its seven acres contained walled gardens, large perennial borders, stone terraces, greenhouses and an orchard. Neglected by lack of maintenance and time, yet still with magnificent vistas of the mountains and Strait.

I'd been working on a terrace, preparing the ground after thirty-odd years of neglect. Trees and brambles had been removed and I had the back-breaking task of pick-axing out the stumps and forking out the mass of roots, weeds, broken glass and stones.

After refreshing the soil with several tonnes of manure and fresh topsoil, all was ready for the new Japanese-style planting scheme we'd been working on. Wisteria for the pergola, flowering cherries to eventually form a tunnel of blossom over the path and a large statement magnolia with a bench beneath at the centre. With jasmine, quince and figs for the wall as well as a wind sculpted (pruned) forsythia hedge for the entrance. The underplanting was going to be subtler, with drifts of lily of the valley, snake's-head fritillaries, alliums and selected ferns and mosses planted amongst the scented peonies and azaleas.

All was ready, all except for one last stump. It was growing through the base of the high stone wall that ran along the top of the terrace and had been stubbornly defying me for the past three days. It now looked like the decapitated

head of Medusa, the roots a mass of twisted snakes. I'd pick-axed at it, chopped at it with a spade, tried to pry it out with garden forks, axed and sawed, but it clung to the wall refusing to move. Out of breath, my back aching, and swearing at it out of frustration, I set upon it in a violent frenzied attack with the axe. Sparks flew as the axe head hit stone, chunks of wood spun through the air like shrapnel with each heavy smite. I chopped and hacked, pounded and screamed, "WHY WON'T YOU DIE?" until I was spent. Doubled over, gasping in air, my arms, back and chest burning for relief, I staggered back. Yet there it remained, mocking me. I gave it a savage steel toe capped boot kick, and heard a satisfying crack. The large root running through the wall had given up at last. I wiggled and jiggled the stump loose then prised it out with the pickaxe. YES. I could have kissed it, but it was Medusa, so I threw the ugly battered stump into the wheelbarrow, which, as if turned to stone, fell over, dead. Medusa defiant till the end.

Satisfied, knackered and it being almost lunchtime I took my sandwich box and flask of coffee and, admiring the view, sat on a nearby bench while having a break. As I sipped on the hot sweet coffee a robin landed on the wall behind me. "Hello, Mr Robin, you're looking smart," I said. As if to reply, he sang out a burst of song just for me, his little chest heaving like a tiny top tenor. What a joy.

A blackbird, shining like hot tar with splendid yellow beak and legs ran across the wall. His yellow ringed eyes looked like stage makeup as he chased off the robin. As if it was he that was next on the bill. He, too, then burst into song. A blackbird is such a sweet singer with a longer repertoire than a robin, and I sat there through his whole set. It was magical.

"Encore!" I shouted as a bushy-tailed red squirrel, looking like a Master of Ceremonies, bounded across the wall, chasing the blackbird off the stage. "So what are you going to sing?" I asked the squirrel. It just looked at me as if to say, "The matinee is over," and gracefully bounded along the wall and left.

"Wow, what a good day at the office," I said.

• • • • • Cwlwm Seiriol/Ein Hanes Ni 🦋

Rebecca Pritchard, Rheolwr Amgylcheddol, Menter Môn

Mae Prosiect Cwlwm Seiriol (prosiect a ariennir gan Gronfa Gymunedol y Loteri Genedlaethol ac a weinyddir gan Fenter Môn) wedi bod yn cydweithio â Phrosiect Ein Hanes Ni (prosiect ar y cyd rhwng Menter Iaith Môn, Cyngor Sir Ynys Môn a TeliMôn) yn ystod y flwyddyn diwethaf i archwilio peth o'r hanes o amgylch llwybr cylchol Cylch

Cyttir sy'n cysylltu pentref Llandegfan â'i Warchodfa Natur Leol Cyttir Mawr.

Fel rhan o'r broses, gwahoddwyd poblleol i rannu eu straeon a'u hatgofion o'r ardal a chrëwyd cyfres o dair ffilm fer i ddogfennu a dathlu'r hanes lleol.

Dangoswyd y ffilmiau am y tro cyntaf yn Neuadd y Plwyf Llandegfan ar 22 Tachwedd 2023 gyda Rhys Mwyn yn cynnal y noson.



Rhys Mwyn yn cynnal y noson yn Neuadd y Plwyf Llandegfan
Rhys Mwyn hosting the evening at Llandegfan Parish Hall
(Rebecca Pritchard)

Rydym yn hynod ddiolchgar i'r tîrffeddiannwyr lleol, Cyngor Cymuned Cwm Cadnant, Ysgol Gynradd Llandegfan a'r gymuned leol am ddod ynghyd i gefnogi'r gwaith hwn.

Eleni, mae'r prosiectau'n bwriadu gweithio gyda chymunedau eraill yn Ward Seiriol gan gynnwys Llanddona, Llangoed a Biwmares, a byddem wrth ein bodd clywed gennych os oes gennych stori i'w hadrodd.

Rhoddir ein manylion cyswllt isod.

✉ Cwlwm Seiriol
delythi@mentermon.com

✉ Ein Hanes Ni
aaronm@mentermon.com

Dolenni i'r fideos:

📺 Ein Hanes Ni: Hanes Llwybr Cytir Mawr: rhan 1
www.youtube.com/watch?v=NnqpL1QLqP8

📺 Ein Hanes Ni: Hanes Llwybr Cytir Mawr: rhan 2
www.youtube.com/watch?v=2U0CL7cMrOY

📺 Ein Hanes Ni: Hanes Llwybr Cytir Mawr: rhan 3
www.facebook.com/CyfrifMenterMon/videos/a-dyna-ni-dyma-ein-swyddog-prosiect-amgylcheddol-delyth-cwlwm-seiriol-yn-siarad-784616787033759/



Cwlwm Seiriol/Ein Hanes Ni

Rebecca Pritchard, Environment Manager, Menter Môn

The Cwlwm Seiriol Project (a project funded by the National Lottery

www.seiriolalliance.co.uk/newsletters/

Community Fund and administered by Menter Môn) has been working in collaboration with the Ein Hanes Ni Project (a joint project with Menter Iaith Môn, Anglesey County Council and Teli Môn) during the past year to explore some of the history surrounding the Cylch Cyttir circular path which links the village of Llandegfan with its Local Nature Reserve Cyttir Mawr.



Rhai o aelodau Prosiect Cwlwm Seiriol/Prosiect Ein Hanes Ni
Some members of the Cwlwm Seiriol Project/Ein Hanes Ni Project
(Rebecca Pritchard)

As part of the process, local people were invited to share their stories and memories of the area and a series of three short films was created to document and celebrate the local history.

The films premiered in Llandegfan Parish Hall on 22 November 2023 with Rhys Mwyn hosting the evening.

We are incredibly grateful to the local landowners, Cwm Cadnant Community Council, Llandegfan primary school and the local community for coming together to support this work.

Over the coming year the projects are planning to work with further communities in the Seiriol Ward, including Llanddona, Llangoed and Beaumaris, and would love to hear from you if you have a story to tell.

Our contact details are given below.

✉ Cwlwm Seiriol
delythi@mentermon.com

✉ Ein Hanes Ni
aaronm@mentermon.com

Links to videos:

📺 Ein Hanes Ni: Hanes Llwybr Cytir Mawr: part 1
www.youtube.com/watch?v=NnqpL1QLqP8

📺 Ein Hanes Ni: Hanes Llwybr Cytir Mawr: part 2
www.youtube.com/watch?v=2U0CL7cMrOY

📺 Ein Hanes Ni: Hanes Llwybr Cytir Mawr: part 3
www.facebook.com/CyfrifMenterMon/videos/a-dyna-ni-dyma-ein-swyddog-prosiect-amgylcheddol-delyth-cwlwm-seiriol-yn-siarad-/784616787033759/

puffinpages@gmail.com

The Life

Tamara Rogers, Llanddona Writers Group

Life like a set of cog wheels

Meshing with each other

Their connection might be sad or joyful

It could bring anger, fear, misery or satisfaction.

Joy oils the wheels

Battle for survival could scratch the notches

Some emotions might leave traces Which can't be healed.

Youth get together lightly

Later in the life cogs wear out

And hard to communicate If one feels used or useless.

On a rainy day a small wren pecks

On a creeping silver plant outside of my window.

I feel that a bird, plant and I form a small

But significant circle at this moment of our existence.

Gwanwyn wyna (a'm dannedd!), 2024 🍁

Tomos Griffiths

Gofynnodd Andrew Perrott i mi ysgrifennu am dymor wyna 2024...



(Tomos Griffiths)

Wel dwi wedi tynnu rhai lluniau. Mae'n hwyl, mae'n waith caled ac mae'r cyfan yn ymwneud â'r tywydd ac nid dyma'r tywydd mwyaf eleni mewn gwirionedd hyd yn hyn!



(Tomos Griffiths)

O'dd ŵyn yn gorfod aros tu allan yn y glaw, gwynt ac yn trafaelio o gwmpas yn y caeau gwlyb a dwi wedi gorfod delio gyda brace ar gyfer fy nannedd a dwi wedi cael dau ddannedd allan sydd wedi bod yn hassle felly dwi ddim wedi bod yn

lot o help i fy Mam a Dad ac wedyn i wneud pethau'n waeth dwi wedi gorfod goroesi ar fwyd meddal!

Felly dyna pam mae fy erthygl i mor fyr ond gobeithio y byddwch chi'n mwynhau fy lluniau.



Lambing (and my teeth!), Spring 2024

Tomos Griffiths

Andrew Perrott asked me to write about the lambing season 2024...



(Tomos Griffiths)

Well, I've taken some pictures. It's fun, it's hard work and it's all about the weather, and it's not been the greatest of weather this year really so far!



(Tomos Griffiths)

Poor lambs having to survive outside in the rain, wind and trudging around in the soggy fields and I've had to survive with a brace for my teeth and I've had two teeth out which has been a hassle, so I've not been much of a help for my Mum and Dad, and to make things worse I've had to survive on soft food!

So that's why my article is so short but I hope you enjoy my pictures.

Dathlu Dydd Gŵyl Dewi yn Neuadd Bentref Llanddona! 🍁

Rhian Hughes

Wel, fe gawsom y cyfle i ddathlu go iawn gyda Phwyllgor yr Henoed ar ddydd Sadwrn yr 2^{ail} o Fawrth, gyda chawl cennin a thatws, bara brith ac ambell i deisen gartref.

Syrpreis y prynhawn oedd cael Gwilym Bowen Rhys hefo ni i'n diddori gydag amrywiaeth o alawon gwerin Gymreig. Pawb wedi cael llond bol o fwyd ac wedi mwynhau'r adloniant yn yr Hen Ysgol, Neuadd Bentref Llanddona.

Diolch o galon i bawb am helpu ar y diwrnod, ac i bawb a ddaeth i ddathlu pob dim Cymraeg.



Celebrating St David's Day in Llanddona Village Hall!
Rhian Hughes

Well, we certainly had the chance to celebrate with the Llanddona Senior Citizens Committee on Saturday 2 March, with leek and potato soup, bara brith and a variety of homemade cakes.



Rhian a Gwilym
Rhian and Gwilym

The surprise of the day was having Gwilym Bowen Rhys with us to entertain us with an array of Welsh folk songs. Everyone had plenty to eat and thoroughly enjoyed the entertainment at yr Hen Ysgol, Llanddona Village Hall.



Cael amser da
Having a good time

Many thanks to all for helping us on the day, and to all that came along to celebrate everything Welsh.

Yr Owain Glyndŵr, Llanddona: Community Pub Hero winner 2024

Andrew Perrott

The date? 5 March 2024. The venue? The House of Commons. The event? The announcing of the Community Pub Hero winners 2024...there were 1,000 entrants, a list whittled down to just 24 finalists.

They gathered on the day with their MPs and peers to come together to recognise the incredible impact that the pubs have on their communities, and 12 returned

home, each with a trophy presented by Kevin Hollinrake MP, Parliamentary Under-Secretary of State for Enterprise, Markets and Small Business...and one of them was Llanddona's very own Owain Glyndŵr!



Yr Owain Glyndŵr, basking in the sun (yr Owain Glyndŵr)

A couple of years ago the writing was on the wall for yr Owain, but its new owners, Mark and Tammie Williams, have bucked the trend of 'disappearing community pubs', and yr Owain is back in its place at the hub of Llanddona. A darts team was formed last year and Llangoed's footballers now use the pub for all their home game refreshments. Families have returned, fundraisers are encouraged, and events are hosted, one of the most widely recognised being the summer Rali Tractor Llanddona Tractor Rally, now in its fourth year.

Mark and Tammie have achieved so much in such a short time, and knew nothing about the PubAid Community Pub Hero Awards 2024...somebody had nominated yr Owain anonymously for the Awards. Even better, yr Owain was shortlisted and, best of all, it was announced as the Welsh winner of the Pub Hero Award.



Mark and his Award (yr Owain Glyndŵr)

"To win was unbelievable for us," Mark said. "We're lucky in having such fantastic local support and a good core of regulars for what is a small village.

"With local pubs and schools closing in rural Wales, we felt it was important to keep our village pub open to retain a sense of community. We were regulars of the pub and and we gambled quite a lot to borrow and buy it. We'd seen the slowdown in trade over the years but we

felt we could put fresh blood into the pub and bring a new lease of life to it."

Yr Owain Glyndŵr has an illustrious name, and it was opened in 1984 by another Welsh hero, Max Boyce.

Local trade sustains the pub over winter, but summer tourism is the main source of income. Llanddona is noted for its sandy beach, and for the famous legend of the Witches of Llanddona; read *The Owain Glyndŵr, its Llanddona Witches mural and the legend...* in The Puffin 43, page 23. The Witches are commemorated in an impressive mural by bar member Emily Owen in yr Owain's dining room, and Facer's Brewery in Flint even produces a special 'Llanddona Witches Ale' specially for the premises.

40th anniversary! Yr Owain Glyndŵr opened its doors on 20 July 1984, when a lot of us were young and some of us hadn't even happened!

Make sure that you're there on 20 July 2024 to celebrate...there'll be a free buffet to thank customers and familiar faces past and present.

Don't miss the fantastic live '80s-themed band, ReRun, at 9.00pm, or the optional '80s fancy dress competition, with prizes for the best-dressed entrants.

Community Pub Hero Winners Announced for 2024
www.pubaid.co.uk/news/community-pub-hero-winners-announced-for-2024/

How Anglesey pub dedicated to Welsh hero has become the most 'heroic' in Wales
www.dailypost.co.uk/news/north-wales-news/how-anglesey-pub-dedicated-welsh-28790036

01248 810710

Yr Owain Glyndŵr
Llanddona
Anglesey
LL58 8UF

contact@ogdllanddona.co.uk

Cymuned Llanddona Community
www.facebook.com/groups/llanddona/



The Royal National Lifeboat Institution and Anglesey: part 6
Andrew Perrott

We started to tell the story of the Royal National Lifeboat Institution (RNLI) in The Puffin 41, beginning with an account of the first lifeboats. We continue the story here with the amazing

exploits of Henry Blogg, who served as a lifeboat crewmember for 53 years.

◆ ◆ ◆
53 years of service: in 1947, at the age of 71, Henry Blogg drew 53 years of service as a lifeboat crewmember to a close. Over the course of his time with the RNLI, he was awarded three Gold Medals and four Silver Medals for Gallantry, making him the most decorated volunteer in RNLI history, and with the help of his brave crew at Cromer, he was responsible for saving over 873 lives.

Henry left school at the age of 11 to help his stepfather, himself a second coxswain, in the family crab boat. It was here that he learned how to use an oar, handle a sail and navigate tides, currents, rocks and shoals, although he never learnt to swim. It was also here that he learnt the dark side to Cromer's scenic coastline: the unpredictably powerful tides, winds, currents and rock-hard sands that have claimed thousands of lives.



Henry Blogg, former Coxswain of Cromer lifeboat, talking to a soldier (RNLI)

As soon as he turned 18, he joined the Cromer lifeboat crew, climbing aboard the *Benjamin Bond-Cabbell* for his first rescue, to go to the aid of the *Fair City of Gloucester*.

In 1902, Henry was voted as Second Coxswain by the crew after only eight years of service after his stepfather retired due to poor health.

Seven years later, in November 1909, he was unanimously elected by the crew as Coxswain, having acted as temporary Coxswain since the beginning of that year.

Many medals: the first of Henry's many medal-winning rescues took place in 1917, when he and his crew launched four times over the course of 14 hours in terrible storm. Aboard Cromer's lifeboat, *Louisa Heartwell*, they battled 50mph winds to get to the aid of 22 crew stranded aboard the Greek vessel, *Pyrin*.

The lifeboat crew had to rely on 14 oars, two sails and the strength of the crew to navigate the heavy seas. Just as they arrived back on shore, triumphant and exhausted, they were told of the Swedish ship *Fernabo*, which had been blown in half by an enemy mine. Rowing over 380 yards each way, three times, Henry and his crew rescued all of the sailors on board. In return, he was

puffinpages@gmail.com

awarded his first Gold Medal for his 'remarkable personality' and the 'admirable leadership' demonstrated during the rescue. His crew were awarded Bronze Medals and also praised for their 'courage and dogged tenacity'.

On 22 November 1927, in extremely perilous circumstances, Henry and his crew rescued 15 crew from the Dutch tanker *Georgia*, which had broken in two on Haisborough Sands. For 28 hours, the lifeboat crew assisted the tanker's crew, earning Henry his second Gold Medal.

From 14-16 October 1932, Henry and his crew rescued 29 crew from the *Monte Nevoso*, an Italian vessel stranded on Haisborough Sands. The lifeboat made numerous launches to the vessel, while the *Monte Nevoso's* captain and three other crew refused to leave the ship.

The four men eventually left in their own motor boat when the vessel broke up and the lifeboat returned home, some 52 hours after the original launch.

Henry received his first RNLI Silver Medal, a Silver Medal and a diploma from the Italian Government and a Canine Defence League medal for saving the life of a Tyrolean sheepdog that had been on the ship. Henry liked dogs, and the captain gave him this one, which he named Monte. After that, Monte was never seen more than a couple of feet from Henry's side.

On 13 December 1933, Henry and his crew were called out to the 65-tonne barge *Sepoy*. Henry described this as the worst journey in his then 24 years as Coxswain. The lifeboat had made several attempts to go alongside the barge but it was impossible to hold it in position because of the wind and tide. He then ran the lifeboat's bow onto the deck of the *Sepoy*.

One of the casualties was seized by the crew and, when Henry repeated the manoeuvre, the other man was rescued.

On 9 October 1939, Henry took part in the rescue of the 29 crew of the Greek-registered vessel *Mount Ida*, which was wrecked on the Ower Bank in a gale with very heavy seas. In return, the crew were rewarded with the first lifeboat medal of the Second World War.

On the night of 5 August 1941, in gale force winds and heavy breaking seas, six vessels in a southbound convoy were wrecked on Haisborough Sands. The following morning the two Cromer lifeboats and the Sheringham and Gorleston lifeboats were launched and 88 men were saved.

On 26 October 1941, the *English Trader of London* ran aground on a sandbank on the other side of Haisborough Sands

in a full gale with a very heavy sea. After gallant efforts that afternoon, 44 of the crew were rescued by Henry and his crew the following morning.

Retirement: in March 1946, the committee of the Cromer Branch of the RNLI discussed the question of Henry's retirement. Although he was 70 years old, ten years over the retiring age, Henry felt he would like to continue for another year. In view of his unrivalled record of service to humanity it was agreed that he should do so. It was in 1947, therefore, that he took off his lifejacket marked 'Cox' for the last time, after 53 years of service as a volunteer in the RNLI.

📄 Our history
<https://rnli.org/about-us/our-history>

📄 Make a donation
<https://rnli.org/support-us/give-money/donate>



H'Artworks on tour: more
Anne Snaith

You'll have read in **The Puffin 47** that I am no longer artist-in-residence at the Bulkeley Hotel in Beaumaris...since then my life has changed quite dramatically...

H'Artworks has continued to run a varied programme of events of home-based classes and bespoke creative sessions. I really left to pursue my dream of becoming a book illustrator, and am now back in full-time education studying on-line for a BA Hons degree with Falmouth University. It's exciting and challenging in equal measure, and very different from my non-digital art training experience from many moons ago.



A young artist and her work (Anne Snaith)

I love teaching and have continued with the children's and young peoples' art clubs, and the watercolour and mixed-media classes are thriving in my home-based environment. I'm still taking youngsters through "Arts Award" training in private lessons, and I support home-schooled children.

To encourage my students further I've organised an exhibition, "H'Artworks and Friends", at Canolfan Hamdden Beaumaris from 1 July to 27 August, which should be a very lively and exciting event. Anyone who has taken classes with me over the past 13 years may enter; you'll find my contact details below, and there's more information on page 8. There will be an opening night on 5 July, 7.30pm-9.30pm, with drinks and nibbles.



Work under way...
(Anne Snaith)



Silk scarves on display
(Anne Snaith)

My 'bespoke days' are available all year round, and offer a wide range of creative experiences, ranging from silk suncatchers to brusho tasters and batik fun days with lots more in between. I cater for children (age 7 upwards) and adults alike, including birthday parties and special events, and I can design vouchers to suit your occasion as well, if you're looking for a something as a special gift.

I was approached recently by Cyfeillion Ynys Tysilio/Friends of Church Island in Menai Bridge about running an event for them during the "July Gwyl Tysilio" festival at Church Island. At the time of writing we're still at the planning stage, and I'm hoping to run a "Sialens Dyfrlliwi/Watercolour Challenge" during the week of the Festival. People will have to bring their own materials, but chairs and soft drinks will be provided and portaloos will be available as well. If all goes to plan the artwork will be photographed and there will be an exhibition of the completed paintings at

St Mary's Church in Menai Bridge. It's a free event, but donations will be received with thanks.

Please contact me for more information.

☎ 01248 810631, 07531 384434

✉ hartworks@btinternet.com

📱 [www.facebook.com/Hartworks Gallery/](https://www.facebook.com/HartworksGallery/)

📍 Cyfeillion Ynys Tysilio/Friends of Church Island
www.friendsofchurchisland.wales

• • • • •

The Puffin for children: the story of Simon Squirrel and how he first met his best friend Benjamin Badger

John Nunn

This is the first of an occasional series...

◆ ◆ ◆

Once upon a time deep in the forest lived a family of squirrels. There was Mrs Squirrel, Mr Squirrel and their young son Simon. Simon was a lively little fellow and loved nothing better than to scamper through the tree tops leaping from branch to branch and just enjoying being alive. Mrs Squirrel was often worried, in the way mothers so often are, about the possible dangers which might befall Simon. Supposing he missed his footing, she thought, or supposing, when he leapt from one branch to another, he failed to catch the next branch. Then he would go plunging to the forest floor, and the thought of him lying there groaning in pain really scared her. Of course, Simon told his mum that there was nothing to worry about; he was a good jumper and would always be safe, and even if he did slip, he'd just catch the next branch on his way down. Mrs Squirrel was not convinced, and told Mr Squirrel to have a word with Simon. So Mr Squirrel called Simon over one day.

"Simon," he said.

"Yes, daddy?" said Simon.

"You know how worried your mother gets when you're leaping around in the trees, don't you?" he said.

"I know," said Simon. "But that's silly. It's what we squirrels do."

"I know, son," said his father. "But just to make your Mummy happy, why don't you play on the ground for a bit?"

"Oh, all right," said Simon in that long-suffering way all children have when they think Mum and Dad are being daft. "I'll play on the forest floor for a bit."

Now it just so happened that it was autumn and the leaves were beginning to fall. The forest floor was covered by a swirling mass of leaves, brown, red, yellow – in fact, almost any colour you can think of – and the wind was blowing them into fantastic patterns in the air and on the ground. Simon soon got into the spirit of things and ran and jumped and ran again until he was quite exhausted.

He completely forgot he had not wanted to play on the ground to begin with. At last, feeling quite exhausted, he spotted what looked like a large pile of leaves, and with a great leap jumped into the pile to have a bit of a rest.

"Oi! Do you mind?" said the pile of leaves. "I've just got myself comfortable here."

Well, as you can imagine, Simon was rather startled. "I didn't know leaves could talk," he said to himself. But all was explained when a black and white snout appeared from the leaves and a badger stood up.

"Benjamin Badger, at your service," said the badger. "By whom have I had the pleasure of being disturbed?"

"Simon Squirrel," said Simon. "I'm awfully sorry. I didn't know you were there."

"That's all right," said Benjamin. "I was about to go and play somewhere anyway. Shall we go together?"

"I'd like that," said Simon.

"Hey, but no climbing up trees, young squirrel me lad," said Benjamin. "I'm afraid that's not what we badgers do."

"Oh, all right," said Simon. "On the ground it is."

So off went Benjamin and Simon and before long they had become the best of friends. They went on to have lots of adventures in the deep dark wood, and we can hear about some of them next time.

• • • • •

Lt Robert William Hanmer Everett D.S.O., R.N.V.R.: an amazing life

Andrew Perrott

Lt Robert William Hanmer Everett D.S.O., R.N.V.R.

Lieutenant Royal Naval Volunteer Reserve Fleet Air Arm, HMS Heron; flew Hawker Hurricanes from catapult ships; killed in air accident January 29 1942, age 40; aeroplane found on Llanddona beach; buried in Churchyard of St Dona, Llanddona

◆ ◆ ◆

Lt Robert Everett was mentioned in Lucy Low's article in **The Puffin** 47, page 8. The article obviously piqued people's interest because **The Puffin** received two sets of information and I was prompted to buy a book.

Thank you, Bridget Geoghegan and Andrew Dickie for sending the information to **The Puffin**: Bridget for what is known of the Australian part of his life, and Andrew for his winning of the 1929 Grand National.

There are three threads to Bob Everett's life: Everett the Australian, Everett, the Grand National winner, and Everett, the RNVR pilot of the Second World War. Everett, the Grand National winner, appears on the next page, and the other two threads will follow in **The Puffin** 49.

1929: the Grand National

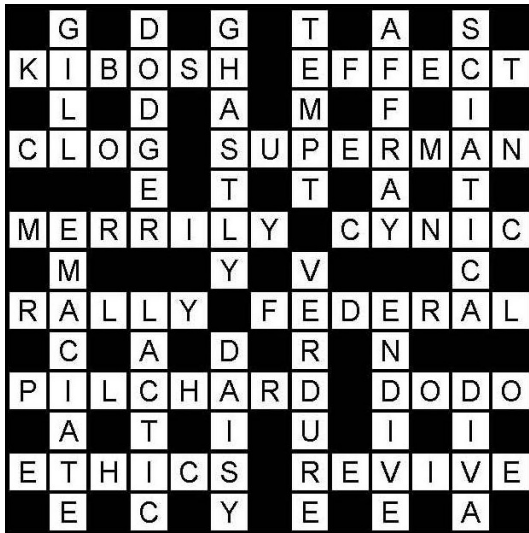
To the amazement of the public and the horror of pundits, 66 horses went to the post for the 1929 Grand National. *Easter Hero* was the favourite at the unrealistic odds of 9/1.

Also in the race was the seven-year-old *Gregalach*, a half-brother to *Easter Hero*. *Gregalach* was owned by Mrs M A Gemmell, and entered Tom Leader's Newmarket training establishment. *Gregalach* had run up a long sequence of seconds before a lacklustre performance at Sandown just eight days before the Grand National. His rider was the Australian Robert Everett, late of the Royal Navy. He had been a professional barely twelve months, but with extensive experience in South Africa was partnering the least fancied of Tom Leader's five runners.

Stretching for almost half a mile in front of the stands, the 66 runners paraded in race-card order. *Easter Hero* was sweating heavily but, when the tape went up, he settled immediately, leading over the first jump where not one horse fell. The first ditch brought the first casualties, no fewer than ten runners falling or refusing. *Easter Hero* was jumping like a stag and set a terrific pace. A crescendo of cheering spurred some 20 survivors over the Water and Mr Whitney's powerful chestnut continued to skip over the fences. Over Valentine's, the favourite was running them all into the ground when suddenly his stride seemed to shorten and for the first time the zest began to seep away. It was later discovered that he had spread a plate somewhere in that vicinity and from there on, every stride became agony for *Easter Hero*. Battling courageously to the end, he was unable to resist the challenge of *Gregalach* who overtook him between the last two fences and stayed on to win by six lengths, the

The Governor's Quick Crossword no 16:

Solution



Fianchetto 66's Chess no 7:

solution

Qf6+ Nxf6 2. Be7#.

In plain language, white's queen moves three squares forward, putting the black king in check and letting the black knight on the top row capture her.

Madness, I hear you cry!...but this daring sacrifice allows white's bishop to move diagonally one space to the right and checkmate the black king.



first of ten finishers in a record field of 66 starters.

For the second year running the bookmakers had cause to smile, for the winner was again at 100/1.

In 1930, a year after this sensational victory Everett was a faller on *Gregalach*; his mount was then semi-fit after an interrupted preparation.

When *Gregalach* returned fully fit in 1931 he finished runner-up, beaten by only one and a half lengths by the more fancied *Grakle*. By this time, Everett had been replaced as *Gregalach*'s rider by Jack Moloney.

Everett himself fell in the race, this time on *Kakushin*.

In the photograph (source 3), Ted Leader is seen congratulating *Gregalach*'s winning owner, Mrs Gemmell, and Robert Everett. Billy Stott on *Richmond II* is on the right of the picture, and J Mason on *Melleray's Belle* on the left.

Sources: these are the three sources that Andrew kindly lent me:

- 1 *A Race Apart: the history of the Grand National*
Reg Green
Hodder & Stoughton, 1988
ISBN 0-340-41578-9
(pages 204-206)
- 2 *A-Z of the Grand National*
John Cottrell & Marcus Armytage
Highdown, 2008
ISBN 978-1-905156-43-6
(page 161)
- 3 *The Grand National: An Illustrated History of the Greatest Steeplechase in the World*
Clive Graham & Bill Curling
Barrie & Jenkins, 1972
ISBN 0214 65339 0
(page 117, page 119)

Now you must wait for **The Puffin** 49!

★ The hair lounge ★
Y lolfa wallt
★ Beaumaris ★
17 church street ★ 01248 208010

D. Griffith
DECORATING

07732 146 397
dgdecorating@mail.com
• spray specialist •
• interior & exterior •
• domestic & commercial •
Covering Anglesey & Gwynedd

Tailpiece: a Weary Westie on eating an art installation, waggy tails and 'Semaphore Ears'

Dame Tilly Barker of Llanddona (dogtated to Andrew Perrott)

You might laugh, dear reader (I was dogtating from the comfort of one of my many armchairs)... I was telling the Boss not to go on about my most recent canine vandalism while he was cleaning my eyes one morning a few weeks ago.



Who? Me? I'd been caught in the act...



...so I decided to take a power nap...

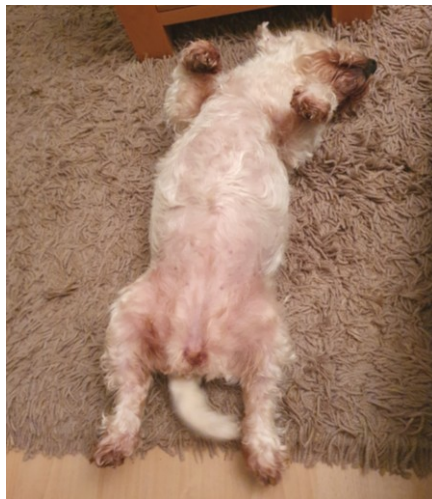
The Boss had taken me with him when he went to Jane Bunce's gallery in Penmon to photograph the lovely picture that's on this month's cover.

Yes, I *did* eat an art installation, or at least I gave it a jolly good mangling. What is a small woolly white dog meant to do if Jane leaves such enticements at nose level? As soon as I saw it I heard the Siren Song: "eat me, eat me..." So I did so. Larch cones, twigs, bits of wood: what fun it was.

As you can see, I gave them one of my 'doggie on a chocky box' looks, but they didn't fall for that trick, so I tried the waggy tail trick instead (see a bit further on)...no luck there, either, so I took the easy way out: a power nap. It always

works. Their attention span is often very short...

Another thing that he mentioned one morning was dogs and waggy tails: apparently, he said, new research suggested that dogs wag their tails for humans. Well, I thought, what's new about that? I could have told him all about the purpose of waggy tails years ago...



My bezzie Edie, the 'Queen of Waggy Tails', being a brazen hussy...

Most people think that we wag our tails because we're excited or happy to see our servant (Boss-speak for *owner*). I'm a waggy dog because I'm a happy dog, and I wag at the Boss because he's happy when I'm happy. He's easily pleased. Researchers say that we're waggy because humans love the rhythm of our wagging, or because we've been domesticated. Anyway, I know which side of my bread's buttered; I keep him happy by wagging and the rest follows.

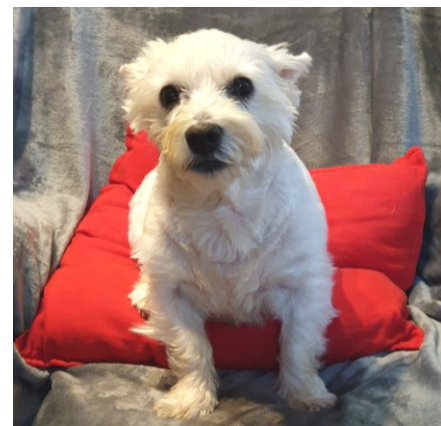
My bezzie Edie is much waggier than me. I think her tail's solar-powered because it never seems to stop. She can be such a hussy at times; she wags and rolls over at a moment's notice in the hope that somebody will scratch her tum. It always works...

Another trick that every dog with pointy-up ears like mine should use whenever possible is 'Semaphore Ears'. When I was a pup I was a tiny fluffy ball, and I had huge ears; not just big as they are now, but *huge*. I grew into them, though, and now they're just two of my many attractive features. They're still big...

Most of the time they point up, but I can make them lie flat...and I can make them do different things at the same time: one up, one down, that sort of thing... The Boss always falls for it.



Four months old...and what *big* ears I had...



Ears down and folded back...I wasn't feeling well, and I didn't even want to go for a ride in the car...

Edie has floppy-down ears, and they're really big – much bigger than mine are – when the wind blows them so that they stick up. That's probably why they flop over.

I told her that she should use something like matchsticks to make them stand up like mine do, but she wasn't having any of that. She said that she was quite happy with her ears as they are.

Here's why dogs wag their tails, according to science
www.standard.co.uk/news/uk/why-reasons-dogs-wag-tails-animals-pets-science-b1132973.html

Why do dogs wag their tails?
<https://royalsocietypublishing.org/doi/10.1098/rsbl.2023.0407>

Local Facebook links

- Anglesey Community Noticeboard/Hysbysfwrdd Cymunedol Môn
www.facebook.com/groups/205528177434085/
- Friends of Beaumaris
www.facebook.com/groups/521368261344315/
- Beaumaris Community Activities and Information/Gweithgareddau Biwmares
www.facebook.com/groups/400365856820659/
- Ffrindiau Cwlwm Seiriol Friends
www.facebook.com/groups/395263584239092/
- Cymuned Llanddona Community
www.facebook.com/groups/llanddona/
- Cymuned Llandegfan Community
www.facebook.com/groups/1518554195120520/
- Ffrindiau Llangoed
www.facebook.com/groups/1458577214379355/
- Cymuned Llangoed Community
www.facebook.com/groups/Llangoed/
- Pobol Llansadwrn People
www.facebook.com/groups/3140572646162274/
- Hysbysfwrdd Seiriol Noticeboard
www.facebook.com/groups/1600203890233039/



ABC Service Station

Gallows Point, Beaumaris, Anglesey LL58 8YH

☎ 01248 810359

📧 www.facebook.com/ABC-Service-Station-947345708674543/

Thank you, ABC Service Station, for supporting The Puffin



Beaumaris Town Council

Town Hall, Castle Street, Beaumaris, Anglesey LL58 8AP

☎ 01248 810317

✉ beaumaristowncouncil@tiscali.co.uk 🌐 www.beaumaristowncouncil.gov.uk/

Thank you, Beaumaris Town Council, for supporting The Puffin

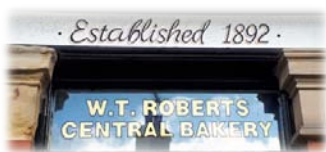


Canolfan Beaumaris

A not-for-profit Social Enterprise Business supporting the community since 2013
Thank you, **Canolfan Beaumaris**, for supporting The Puffin

Rating Row, Beaumaris, Anglesey LL58 8AL • ☎ 01248 811200

✉ enquiries@canolfanbeaumaris.org.uk • 🌐 www.canolfanbeaumaris.org.uk/



Central Bakery specialises in artisan breads, homemade pies and pasties. There's always a delicious selection of freshly-baked produce from which to choose, whatever the season.

Thank you, Central Bakery, for supporting The Puffin

22 Margaret Street, Beaumaris, Anglesey LL58 8DN

☎ 01248 810386 🌐 www.facebook.com/central-bakery-1544465662475012/

Ena's Newsagents

Ena's Newsagents

Ena's Newsagents

For newspapers, magazines and things that you know you need

Thank you, Ena's Newsagents, for supporting The Puffin

24 Castle Street, Beaumaris, Anglesey LL58 8AP

☎ 01248 810292

Ena's Newsagents

Ena's Newsagents

Ena's Newsagents

Morrisons Daily

POST OFFICE

We support communities around our local neighbourhood stores, and provide a great range of quality everyday products and services, close to where people live, and available when they need them.

Thank you, Morrisons Daily, for supporting The Puffin

China House, Llangoed, Anglesey LL58 8NW

☎ 01248 490056

🌐 www.mccolls.co.uk/



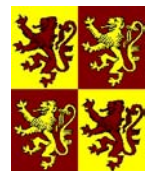
Yr Owain Glyndŵr • Community Pub Hero Award Winner 2024

Enjoy our friendly atmosphere and local cask ales, lagers and cider, wines, spirits and soft drinks...and in the bar and restaurant, a superb range of home-made meals and snacks

Thank you, **Owain Glyndŵr**, for supporting The Puffin

☎ 01248 810710 • Llanddona, Anglesey LL58 8UF • ✉ contact@ogdllanddona.co.uk

🌐 www.facebook.com/pages/the-owain-glyndwr/160350960658446



The Pilot House Café

Black Point, Penmon, Anglesey LL58 8RR

☎ 01248 490140 🌐 www.pilothousecafe.com/

Open daily from 10.00am until late in the season, and during daylight hours in winter

Thank you, **Pilot House Café**, for supporting The Puffin



Siop Llandêg

♥ The shop at the heart of Llandegfan ♥

We support local producers, including Mercado by Midland and Central Bakery, Beaumaris

Thank you, Siop Llandêg, for supporting The Puffin

Siop Llandêg
Lon Ganol, Llandegfan
Anglesey LL59 5UA

☎ 07592 950159

✉ siopllandeg@yahoo.com

SPAR



We're proud to be a part of the community. We provide the essentials, we serve with a smile and we support local suppliers, schools and charities. We're there for you, and there for everyone.

Thank you, Spar, for supporting The Puffin

11 Castle Street, Beaumaris, Anglesey LL58 8AB

☎ 01248 810326 🌐 www.spar.co.uk/store-locator/afb45405-spar-beaumaris

POST OFFICE

EVRI ParcelShop

Editorial information and other 'useful to know' stuff

The Editorial Team

Richard Adams	John Nunn
Mavis Bishop	Andrew Perrott
Paul Bishop	Owen Williams
John Briggs	✉ puffinpages@gmail.com

Editorial Policy

- **The Puffin** is a community journal. It does not become involved in matters such as politics, local or national, but is intended to be a means of bringing people and communities together, celebrating our 'sense of community' and the beautiful part of the world in which we live, so please be kind, courteous and respectful. 'Hot' topics related to the local context are fine, but we ask that people respect the fact that alternative views may be valid as well.
- We welcome news, letters and interesting articles, in Welsh and in English, as long as they are attributed to an author; please don't send us anything marked 'not for publication'.
- The views expressed in **The Puffin** do not necessarily represent those of the Editorial Team.
- We review all items for material that is obviously libellous or offensive, but we cannot check for factual accuracy because we might not be sufficiently expert on the topic, and because of time constraints.
- If you have strong feelings about what is said, or is not said, in **The Puffin**, don't bottle it up: get in touch with us or join the group of volunteers who form the Editorial Team who enable its production.

General information and publication dates

- We will do our best to reply to your e-mails quickly.
- If you e-mail photographs and other pictures to us for inclusion in **The Puffin**, please send them in .jpg format if possible. If you send photographs or documents to us by post, be sure to enclose a stamped, self-addressed envelope so that we can return them to you after they've been scanned.
- The word count per column is c.350 (three-column page) and c.520 (two-column page).
- **The Puffin** is published in:
 - February:** submissions by 1 January
 - May:** submissions by 1 April
 - August:** submissions by 1 July
 - November:** submissions by 1 October

Submissions and donations by post

- We are happy to receive submissions – and donations, of course! – by post. Please send them to:

Andrew Perrott
Glangors
Llanddona
Anglesey
LL58 8TU

Mark the envelope **The Puffin** and enclose your address, an e-mail address and/or telephone number so that we can let you have an acknowledgement and a 'thank you'.
- If you would like to make a donation by bank transfer, our details are:

Bank: **NatWest**
Account name: **The Puffin**
Account number: **88609782**
Sort code **54-10-01**

Sponsorship and advertising

- Please contact us by e-mail if you would like to sponsor **The Puffin** or place an advertisement in it.

Where to pick up your copy of **The Puffin**

- **Beumaris**
ABC Service Station, Gallows Point, Beumaris LL58 8YH
Canolfan Beumaris Leisure Centre, Rating Row, Beumaris LL58 8AL
Central Bakery, 22 Margaret Street, Beumaris LL58 8DN
Ena's Newsagents, 24 Castle Street, Beumaris LL58 8AP
Spar, 11 Castle Street, Beumaris LL58 8AB
Town Hall (entrance lobby), Castle Street, Beumaris LL58 8AP
- **Llanddona**
The Owain Glyndŵr, Llanddona LL58 8UF
Wern y Wylan, Llanddona LL58 8TR (at Wern y Wylan Court)
- **Llandegfan**
Siop Llandêg, Lon Ganol, Llandegfan LL59 5UA
- **Llangoed**
Morrisons Daily, China House, Llangoed LL58 8NW
- **Penmon**
The Pilot House Café, Black Point, Penmon LL58 8RR
- **On-line**
www.seiriolalliance.co.uk/newsletters/

Some useful contacts

Alcoholics Anonymous	0800 917 7650
Canolfan Iechyd Beumaris Health Centre	01248 810818
Canolfan Beumaris Leisure Centre	01248 811200
Cynllun Tro Da Seiriol Good Turn Scheme	01248 305014
Dŵr Cymru/Welsh Water:	leaks
	0800 281 432
	water services and emergencies
	0800 052 0130
	sewerage services and emergencies
	0800 085 3968
Electricity (SP Energy Networks):	
	information about power cuts
	0800 001 5400
Floodline	0345 988 1188
Gas:	National Gas Emergency Service
	0800 111 999
Isle of Anglesey County Council:	01248 750057
	Beumaris library
	01248 810659
	Children's Services
	01248 752722
	missed waste collections
	01248 752860
NHS (NHS Direct closed in 2014):	
	for non-emergency medical help
	111
NSPCC:	
	help for adults concerned about a child
	0808 800 5000
	help for children and young people
	0800 1111
Police: non-emergency	101
Police Community Support Officer:	
	(not known at April 2024)
Post Office:	customer helpline
	0345 611 2970
	Morrisons Daily, Llangoed
	01248 490056
	Spar, Beumaris
	01248 810326
RSPCA:	daily, 9.00am-6.00pm
	07490 642555
Samaritans:	English language
	116123
	Welsh language
	0808 164 0123
Ysbyty Gwynedd Hospital	01248 384384